

# Converting Colors

Android(4294683066)

Have a look what the booklet for  
Android(4294683066) contains.

<b>Android(4294683066)</b> .....	3
<i><b>Conversions</b></i> .....	4
<i><b>Details</b></i> .....	6
<i><b>Harmonies</b></i> .....	11
<i><b>Previews</b></i> .....	23
<i><b>Color Blindness Simulation</b></i> .....	26
<i><b>CSS Examples</b></i> .....	29

# **Color**

**Android(4294683066)**

# Conversions

## Conversions Part 1

Format	Color
Hex	FBA9BA
RGB	251, 169, 186
RGB Percent	98%, 66%, 73%
CMY	0.0157, 0.3373, 0.2706
CMYK	0.00, 0.33, 0.26, 0.02
HSL	348°, 91%, 82%
HSV	348°, 33%, 98%
XYZ	62.8346, 52.4303, 53.2627
YIQ	195.4560, 43.4150, 22.6710

# Conversions

## Conversions Part 2

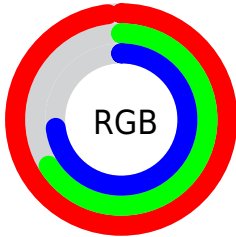
<b>Format</b>	<b>Color</b>
<b>R<sub>YB</sub></b>	251, 169, 186
Decimal	16492986
CIE <sub>Lab</sub>	77.54, 32.39, 3.69
CIE <sub>LCh</sub>	78, 32.599, 6.491
Yxy	52.4303, 0.3728, 0.3111
Android (android.graphics.Color)	4294683066 (0xFFFBA9BA)
YUV	195.4560, -4.6618, 48.7121
Hunter-Lab	72.4088, 28.1825, 7.0734

# Details

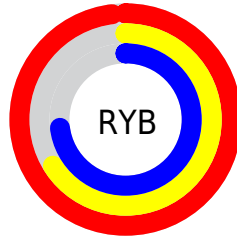
The Android color `4294683066` is a light color, and the websafe version is hex `FF9999`. A complement of this color would be `4289330154`, and the grayscale version is `4291019715`.

A 20% lighter version of the original color is `4294959602`, and `4290868357` is the 20% darker color. If you saturate the color by 10%, you get `4294676646`, and if you desaturate by 10%, it is `4294689486`.

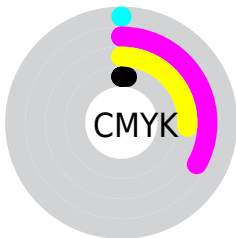
# Distribution



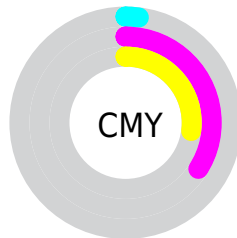
- Red (98%)
- Green (66%)
- Blue (73%)



- Red (98%)
- Yellow (66%)
- Blue (73%)



- Cyan (0%)
- Magenta (33%)
- Yellow (26%)
- Black (2%)



- Cyan (2%)
- Magenta (34%)
- Yellow (27%)

# Brightness & Saturation Gradients

These gradients show how the Android color 4294683066 changes by changing the brightness by 10 percent. The first figure shows a shift by +10% for each color and the second figure -10%.

Similar to the brightness gradients but the following saturation gradients show a change of the Android color 4294683066 by changing the saturation by 10% instead.



 4294683066

 4294683066

4294967295

 4292775583

 4294959602

 4290868357

4294967039

 4289026668

 4287185492

 4285409853

 4283699495

 4281991186

 4280549377

 4278190080

 4294683066

 4294683066

 4294676646

 4294689486

 4294670226

 4294695906

 4294663806

 4294702326

 4294657386

 4294705151

 4294650967

 4294644291

 4294639668

# Harmonies

## Analogous

The Analogous color harmony consists of three colors that are next to each other on the color wheel.



4293700824



4294683066



4294552989

# Triad

The Triadic color harmony groups three colors that are evenly spaced from another and form a triangle on the color wheel.



4294683066



4289579406



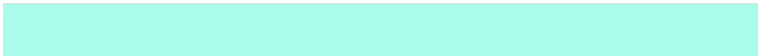
4286040566

# Complementary

The Complementary color scheme is a pair of colors which are on the opposite of each other on the color wheel.



4294683066



4289330154

# Split Complementary

Split-complementary colors differ from the complementary color scheme. The scheme consists of three colors, the original color and two neighbors of the complement color.



4284469218



4294683066



4287286951

# Square

The Square scheme is like the rectangle color scheme, but the four colors are evenly spaced on the color wheel.



4294683066



4291739779



4285190341



4288856315

# Rectangle

The Rectangle color scheme consists of four colors that form a rectangle on the color wheel.



4294683066



4293964430



4285190341



4285254641



# Sweetspot

The Sweet Spot groups the original color and five complimentary colors.



4294683066



4294960875



4293503483



4286607475



4278190080



4286611584



# Same Dimension

The Same Dimension uses a secret algorithm to generate beautiful new colors.



4294683066



4294941872



4294688937



4286410867



4290576423



4282187789



# Inverse Universe

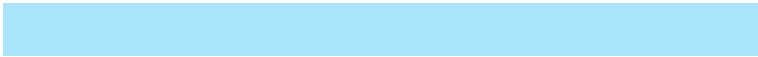
The Inverse Universe completely reimagines the original color for something new.



4294683066



4294941872



4289324283



4286410867



4290576423



4282187789



# Previews

## White Background



This preview shows how the Android color 4294683066 looks on a white background.

## Color Contrast Check

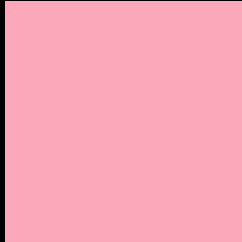
Large Text (above 18pt) WCAG AA × Fail

Any Text WCAG AA × Fail

Large Text (above 18pt) WCAG AAA × Fail

Any Text WCAG AAA × Fail

# Black Background



This preview shows how the Android color 4294683066 looks on a black background.

## Color Contrast Check

Large Text (above 18pt) WCAG AA ✓ Pass

Any Text WCAG AA ✓ Pass

Large Text (above 18pt) WCAG AAA ✓ Pass

Any Text WCAG AAA ✓ Pass

If you want to check with other color combinations, try the [Color Contrast Checker](#).



# Android 4294683066 Background



This preview shows how black text looks on a background with the Android color 4294683066.



This preview shows how white text looks on a background with the Android color 4294683066.

# Color Blindness Simulation

Color vision deficiency is a very complex topic, and I could not describe the different causes any better than Wikipedia does, so if you want to learn more, you should check out their [article about color blindness](#).


## Dichromacy



**Original Color**  
4294683066

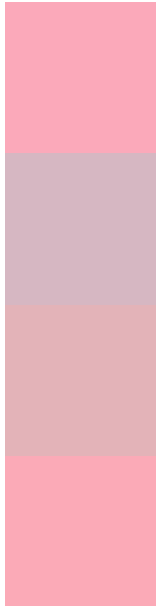
**Protanopia**  
4290887623

**Deuteranopia**  
4292262327



**Tritanopia**  
4294683318

# Trichromacy



**Original Color**  
4294683066

**Protanomaly**  
4292261826

**Deuteranomaly**  
4293112760

**Tritanomaly**  
4294683319

# Monochromacy



**Original Color**  
4294683066

**Achromatopsia**  
4291019715

**Achromatomaly**  
4292328128

# CSS Examples

## Text

The CSS property to change the color of the text to Android 4294683066 is called "color". The color property can be set on classes, ids or directly on the HTML element.

This example shows how text in the color `rgb(251, 169, 186)` looks like.

```
.text, #text, p{  
    color:rgb(251, 169, 186)  
}
```

If you want to add a text shadow in that color use the text-shadow property, you can generate a text shadow directly with our [CSS Text Shadow Generator](#).

Here you see how black text with a 4 pixel rgb(251, 169, 186) colored shadow looks like.

```
.shadow{ text-shadow: 4px 4px 2px rgb(251, 169, 186) }
```

## Border

The CSS property to change the border of an element to Android 4294683066 is called "border". The border property can be set on classes, ids or directly on the HTML element.

This example shows the color as border, it can be applied via the CSS property "border" or "border-color".

```
.border, #border, table{ border:4px solid rgb(251, 169, 186) }
```

If only the border color should be changed use the property `border-color`.

```
.border{ border-color:rgb(251, 169, 186) }
```

If you want to add a box shadow in that color use:

Here you see how a box with a 4 pixel `rgb(251, 169, 186)` colored shadow looks like.

```
.boxshadow{ -moz-box-shadow:4px 4px 4px  
4px rgb(251, 169, 186); -webkit-box-  
shadow:4px 4px 4px 4px rgb(251, 169, 186);  
box-shadow:4px 4px 4px 4px rgb(251, 169,  
186) }
```

# Background

The CSS property to change the background color of an element to Android 4294683066 is called "background". The background property can be set on classes, ids or directly on the HTML element.

```
.background, #background, body{  
background: rgb(251, 169, 186) }
```

If only the background color should be changed can be used:

```
.background{ background-color: rgb(251,  
169, 186) }
```

This example shows the color as background, it is applied via the CSS property "background".

To optimize and compress your CSS code, you can use our [online CSS compressor and optimizer](#) based on csstidy. If you want to create a linear or radial gradient as background or border, check our [CSS Gradient Generator](#).



Hey! You found this booklet interesting? Support Converting Colors with the new Membership Option!

The pro membership hides all ads, plus gives you double the colors in the color bucket, and more awesome pro features!

**[Learn more, Memberships starting at \\$2.50/m!](#)**

**Follow me  
on Twitter!**

@ConvertingColor