

Converting Colors

Android(4294689768)

Have a look what the booklet for
Android(4294689768) contains.

Android(4294689768)	3
<i>Conversions</i>	4
<i>Details</i>	6
<i>Harmonies</i>	11
<i>Previews</i>	23
<i>Color Blindness Simulation</i>	26
<i>CSS Examples</i>	29

Color

Android(4294689768)

Conversions

Conversions Part 1

Format	Color
Hex	FBC3E8
RGB	251, 195, 232
RGB Percent	98%, 76%, 91%
CMY	0.0157, 0.2353, 0.0902
CMYK	0.00, 0.22, 0.08, 0.02
HSL	320°, 88%, 87%
HSV	320°, 22%, 98%
XYZ	73.8643, 65.3656, 85.0677
YIQ	215.9620, 21.4990, 23.3790

Conversions

Conversions Part 2

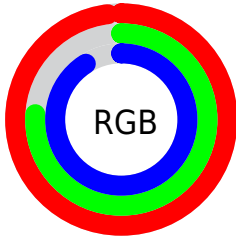
Format	Color
R _Y B	251, 195, 232
Decimal	16499688
CIE Lab	84.67, 25.76, -10.63
CIE LCh	85, 27.871, 337.576
Yxy	65.3656, 0.3293, 0.2914
Android (android.graphics.Color)	4294689768 (0xFFFBC3E8)
YUV	215.9620, 7.9067, 30.7283
Hunter-Lab	80.8490, 21.5931, -5.7894

Details

The Android color `4294689768` is a light color, and the websafe version is hex `FFCCFF`. A complement of this color would be `4291034070`, and the grayscale version is `4292401368`.

A 20% lighter version of the original color is `4294966527`, and `4290940336` is the 20% darker color. If you saturate the color by 10%, you get `4294683359`, and if you desaturate by 10%, it is `4294696177`.

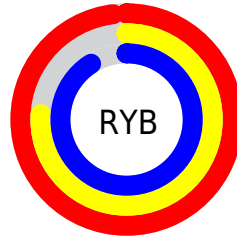
Distribution



Red (98%)

Green (76%)

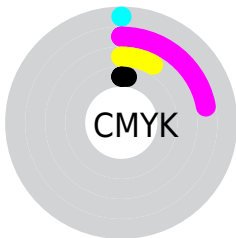
Blue (91%)



Red (98%)

Yellow (76%)

Blue (91%)

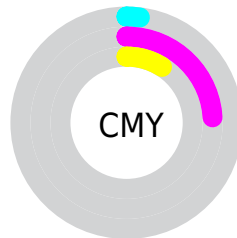


Cyan (0%)

Magenta (22%)

Yellow (8%)

Black (2%)



Cyan (2%)

Magenta (24%)

Yellow (9%)

Brightness & Saturation Gradients

These gradients show how the Android color 4294689768 changes by changing the brightness by 10 percent. The first figure shows a shift by +10% for each color and the second figure -10%.

Similar to the brightness gradients but the following saturation gradients show a change of the Android color 4294689768 by changing the saturation by 10% instead.

 4294689768

 4294689768

4294967295

 4292782284

 4294966527

 4290940336

 4289098646

 4287388284

 4285678179

 4283968331

 4282389556

 4280942623

 4278583300

 4294689768

 4294689768

 4294683359

 4294696177

 4294676951

 4294702585

 4294670542

 4294705151

 4294664134

 4294657725

 4294651061

 4294644652

 4294639782

Harmonies

Analogous

The Analogous color harmony consists of three colors that are next to each other on the color wheel.



4292922109



4294689768



4294951117

Triad

The Triadic color harmony groups three colors that are evenly spaced from another and form a triangle on the color wheel.



4294689768



4292924575



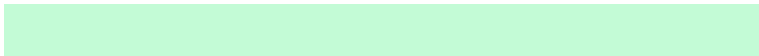
4287160818

Complementary

The Complementary color scheme is a pair of colors which are on the opposite of each other on the color wheel.



4294689768



4291034070

Split Complementary

Split-complementary colors differ from the complementary color scheme. The scheme consists of three colors, the original color and two neighbors of the complement color.



4287554265



4294689768



4291025833

Square

The Square scheme is like the rectangle color scheme, but the four colors are evenly spaced on the color wheel.



4294689768



4294495139



4289061310



4288404735

Rectangle

The Rectangle color scheme consists of four colors that form a rectangle on the color wheel.



4294689768



4294951612



4289061310



4287095531

Sweetspot

The Sweet Spot groups the original color and five complimentary colors.



4294689768



4294962681



4292264955



4286608764



4278190080



4286611584

Same Dimension

The Same Dimension uses a secret algorithm to generate beautiful new colors.



4294689768



4294949608



4294689740



4286410873



4290576509



4282187816

Inverse Universe

The Inverse Universe completely reimagines the original color for something new.



4294689768



4294949608



4291034098



4286410873



4290576509



4282187816

Previews

White Background



This preview shows how the Android color 4294689768 looks on a white background.

Color Contrast Check

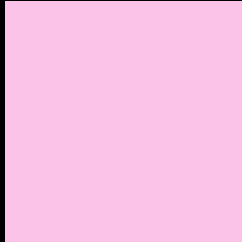
Large Text (above 18pt) WCAG AA × Fail

Any Text WCAG AA × Fail

Large Text (above 18pt) WCAG AAA × Fail

Any Text WCAG AAA × Fail

Black Background



This preview shows how the Android color 4294689768 looks on a black background.

Color Contrast Check

Large Text (above 18pt) WCAG AA ✓ Pass

Any Text WCAG AA ✓ Pass

Large Text (above 18pt) WCAG AAA ✓ Pass

Any Text WCAG AAA ✓ Pass

If you want to check with other color combinations, try the [Color Contrast Checker](#).

Android 4294689768 Background



This preview shows how black text looks on a background with the Android color 4294689768.



This preview shows how white text looks on a background with the Android color 4294689768.

Color Blindness Simulation

Color vision deficiency is a very complex topic, and I could not describe the different causes any better than Wikipedia does, so if you want to learn more, you should check out their [article about color blindness](#).


Dichromacy



Original Color
4294689768

Protanopia
4291744498

Deuteranopia
4292923110

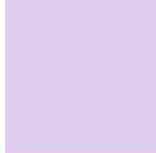


Tritanopia
4294559446

Trichromacy



Original Color
4294689768



Protanomaly
4292791790



Deuteranomaly
4293577447

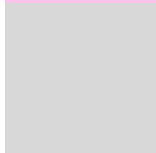


Tritanomaly
4294624733

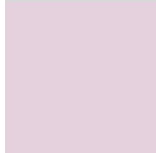
Monochromacy



Original Color
4294689768



Achromatopsia
4292401368



Achromatomaly
4293251294

CSS Examples

Text

The CSS property to change the color of the text to Android 4294689768 is called "color". The color property can be set on classes, ids or directly on the HTML element.

This example shows how text in the color `rgb(251, 195, 232)` looks like.

```
.text, #text, p{  
    color:rgb(251, 195, 232)  
}
```

If you want to add a text shadow in that color use the text-shadow property, you can generate a text shadow directly with our [CSS Text Shadow Generator](#).

Here you see how black text with a 4 pixel rgb(251, 195, 232) colored shadow looks like.

```
.shadow{ text-shadow: 4px 4px 2px rgb(251, 195, 232) }
```

Border

The CSS property to change the border of an element to Android 4294689768 is called "border". The border property can be set on classes, ids or directly on the HTML element.

This example shows the color as border, it can be applied via the CSS property "border" or "border-color".

```
.border, #border, table{ border:4px solid rgb(251, 195, 232) }
```

If only the border color should be changed use the property `border-color`.

```
.border{ border-color:rgb(251, 195, 232) }
```

If you want to add a box shadow in that color use:

Here you see how a box with a 4 pixel `rgb(251, 195, 232)` colored shadow looks like.

```
.boxshadow{ -moz-box-shadow:4px 4px 4px  
4px rgb(251, 195, 232); -webkit-box-  
shadow:4px 4px 4px 4px rgb(251, 195, 232);  
box-shadow:4px 4px 4px 4px rgb(251, 195,  
232) }
```

Background

The CSS property to change the background color of an element to Android 4294689768 is called "background". The background property can be set on classes, ids or directly on the HTML element.

```
.background, #background, body{  
background: rgb(251, 195, 232) }
```

If only the background color should be changed can be used:

```
.background{ background-color: rgb(251,  
195, 232) }
```

This example shows the color as background, it is applied via the CSS property "background".

To optimize and compress your CSS code, you can use our [online CSS compressor and optimizer](#) based on csstidy. If you want to create a linear or radial gradient as background or border, check our [CSS Gradient Generator](#).

Hey! You found this booklet interesting? Support Converting Colors with the new Membership Option!

The pro membership hides all ads, plus gives you double the colors in the color bucket, and more awesome pro features!

[Learn more, Memberships starting at \\$2.50/m!](#)

**Follow me
on Twitter!**

@ConvertingColor