

Converting Colors

Android(4294719096)

Have a look what the booklet for
Android(4294719096) contains.

Android(4294719096)	3
<i>Conversions</i>	4
<i>Details</i>	6
<i>Harmonies</i>	11
<i>Previews</i>	23
<i>Color Blindness Simulation</i>	26
<i>CSS Examples</i>	29

Color

Android(4294719096)

Conversions

Conversions Part 1

Format	Color
Hex	FC3678
RGB	252, 54, 120
RGB Percent	99%, 21%, 47%
CMY	0.0118, 0.7882, 0.5294
CMYK	0.00, 0.79, 0.52, 0.01
HSL	340°, 97%, 60%
HSV	340°, 79%, 99%
XYZ	44.8542, 24.6898, 20.1708
YIQ	120.7260, 96.8220, 62.5020

Conversions

Conversions Part 2

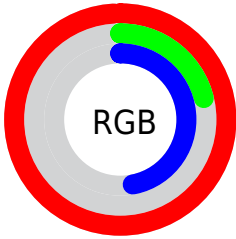
Format	Color
R_{YB}	252, 54, 120
Decimal	16529016
CIE _{Lab}	56.77, 75.60, 11.46
CIE _{LCh}	57, 76.467, 8.617
Yxy	24.6898, 0.5000, 0.2752
Android (android.graphics.Color)	4294719096 (0xFFFC3678)
YUV	120.7260, -0.3579, 115.1273
Hunter-Lab	49.6889, 74.1766, 10.7139

Details

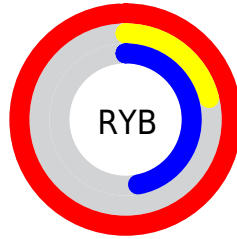
The Android color **4294719096** is a dark color, and the websafe version is hex **FF3366**. The color can be described as middle washed rose. A complement of this color would be **4281793722**, and the grayscale version is **4286151033**.

A 20% lighter version of the original color is **4294932396**, and **4290576456** is the 20% darker color. If you saturate the color by 10%, you get **4294712679**, and if you desaturate by 10%, it is **4294725513**.

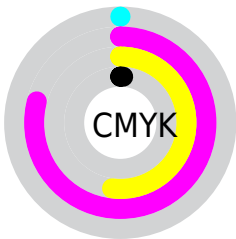
Distribution



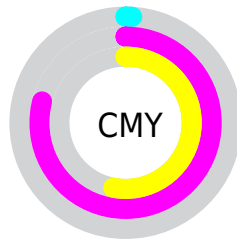
- Red (99%)
- Green (21%)
- Blue (47%)



- Red (99%)
- Yellow (21%)
- Blue (47%)



- Cyan (0%)
- Magenta (79%)
- Yellow (52%)
- Black (1%)



- Cyan (1%)
- Magenta (79%)
- Yellow (53%)

Brightness & Saturation Gradients

These gradients show how the Android color 4294719096 changes by changing the brightness by 10 percent. The first figure shows a shift by +10% for each color and the second figure -10%.

Similar to the brightness gradients but the following saturation gradients show a change of the Android color 4294719096 by changing the saturation by 10% instead.

 4294719096

 4294719096

4294967295

 4292608095

 4294932396

 4290576456

 4294940103

 4288479282

 4294947811

 4286513182

 4294955519

 4284481539

 4294963199

 4282515459

 4280287233

 4278190080

 4294719096

 4294719096

 4294712679

 4294725513

 4294706262

 4294731930

 4294705236

 4294738602

 4294745019

 4294751436

 4294757853

 4294764270

 4294770686

 4294770687

Harmonies

Analogous

The Analogous color harmony consists of three colors that are next to each other on the color wheel.



4293216186



4294719096



4293939512

Triad

The Triadic color harmony groups three colors that are evenly spaced from another and form a triangle on the color wheel.



4294719096



4282948352



4278230271

Complementary

The Complementary color scheme is a pair of colors which are on the opposite of each other on the color wheel.



4294719096



4281793722

Split Complementary

Split-complementary colors differ from the complementary color scheme. The scheme consists of three colors, the original color and two neighbors of the complement color.



4278232282



4294719096



4278231636

Square

The Square scheme is like the rectangle color scheme, but the four colors are evenly spaced on the color wheel.



4294719096



4287859712



4278232474



4278225663

Rectangle

The Rectangle color scheme consists of four colors that form a rectangle on the color wheel.



4294719096



4292438016



4278232474



4278231290

Sweetspot

The Sweet Spot groups the original color and five complimentary colors.



4294719096



4294951638



4290393852



4286602087



4278190080



4286611584

Same Dimension

The Same Dimension uses a secret algorithm to generate beautiful new colors.



4294719096



4294905695



4294727478



4286410869



4290576447



4282187796

Inverse Universe

The Inverse Universe completely reimagines the original color for something new.



4294719096



4294905695



4281785340



4286410869



4290576447



4282187796

Previews

White Background



This preview shows how the Android color 4294719096 looks on a white background.

Color Contrast Check

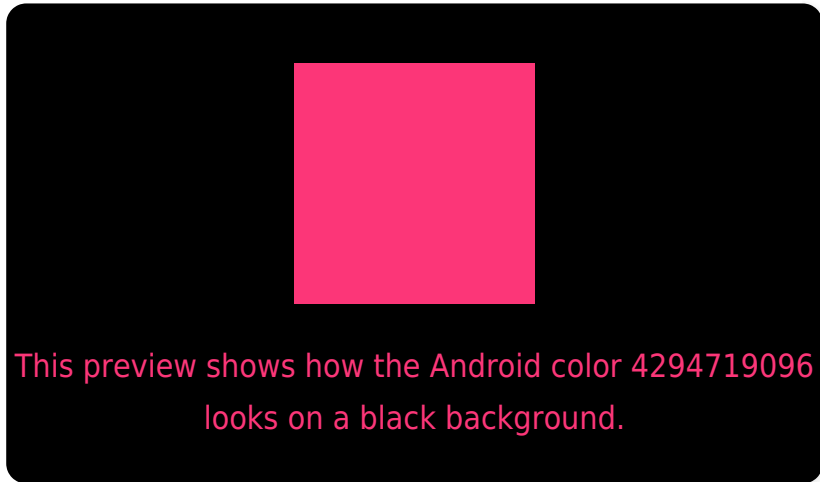
Large Text (above 18pt) WCAG AA ✓ Pass

Any Text WCAG AA ✗ Fail

Large Text (above 18pt) WCAG AAA ✗ Fail

Any Text WCAG AAA ✗ Fail

Black Background



Color Contrast Check

Large Text (above 18pt) WCAG AA ✓ Pass

Any Text WCAG AA ✓ Pass

Large Text (above 18pt) WCAG AAA ✓ Pass

Any Text WCAG AAA × Fail

If you want to check with other color combinations, try the [Color Contrast Checker](#).

Android 4294719096 Background



This preview shows how black text looks on a background with the Android color 4294719096.



This preview shows how white text looks on a background with the Android color 4294719096.

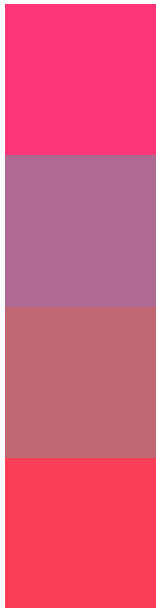
Color Blindness Simulation

Color vision deficiency is a very complex topic, and I could not describe the different causes any better than Wikipedia does, so if you want to learn more, you should check out their [article about color blindness](#).

Dichromacy



Trichromacy



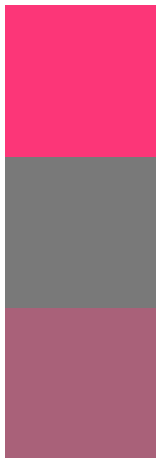
Original Color
4294719096

Protanomaly
4289686163

Deuteranomaly
4290865010

Tritanomaly
4294655576

Monochromacy



Original Color
4294719096

Achromatopsia
4286151033

Achromatomaly
4289290617

CSS Examples

Text

The CSS property to change the color of the text to Android 4294719096 is called "color". The color property can be set on classes, ids or directly on the HTML element.

This example shows how text in the color `rgb(252, 54, 120)` looks like.

```
.text, #text, p{  
    color:rgb(252, 54, 120)  
}
```

If you want to add a text shadow in that color use the text-shadow property, you can generate a text shadow directly with our [CSS Text Shadow Generator](#).

Here you see how black text with a 4 pixel rgb(252, 54, 120) colored shadow looks like.

```
.shadow{ text-shadow: 4px 4px 2px rgb(252, 54, 120) }
```

Border

The CSS property to change the border of an element to Android 4294719096 is called "border". The border property can be set on classes, ids or directly on the HTML element.

This example shows the color as border, it can be applied via the CSS property "border" or "border-color".

```
.border, #border, table{ border:4px solid rgb(252, 54, 120) }
```

If only the border color should be changed use the property border-color.

```
.border{ border-color:rgb(252, 54, 120) }
```

If you want to add a box shadow in that color use:

Here you see how a box with a 4 pixel rgb(252, 54, 120) colored shadow looks like.

```
.boxshadow{ -moz-box-shadow:4px 4px 4px  
4px rgb(252, 54, 120); -webkit-box-  
shadow:4px 4px 4px 4px rgb(252, 54, 120);  
box-shadow:4px 4px 4px 4px rgb(252, 54,  
120) }
```

Background

The CSS property to change the background color of an element to Android 4294719096 is called "background". The background property can be set on classes, ids or directly on the HTML element.

```
.background, #background, body{  
background: rgb(252, 54, 120) }
```

If only the background color should be changed can be used:

```
.background{ background-color: rgb(252, 54,  
120) }
```

This example shows the color as background, it is applied via the CSS property "background".

To optimize and compress your CSS code, you can use our [online CSS compressor and optimizer](#) based on csstidy. If you want to create a linear or radial gradient as background or border, check our [CSS Gradient Generator](#).

Hey! You found this booklet interesting? Support Converting Colors with the new Membership Option!

The pro membership hides all ads, plus gives you double the colors in the color bucket, and more awesome pro features!

[Learn more, Memberships starting at \\$2.50/m!](#)

**Follow me
on Twitter!**

@ConvertingColor