

Converting Colors

Android(4294722921)

Have a look what the booklet for
Android(4294722921) contains.

Android(4294722921)	3
<i>Conversions</i>	4
<i>Details</i>	6
<i>Harmonies</i>	11
<i>Previews</i>	23
<i>Color Blindness Simulation</i>	26
<i>CSS Examples</i>	29

Color

Android(4294722921)

Conversions

Conversions Part 1

Format	Color
Hex	FC4569
RGB	252, 69, 105
RGB Percent	99%, 27%, 41%
CMY	0.0118, 0.7294, 0.5882
CMYK	0.00, 0.73, 0.58, 0.01
HSL	348°, 97%, 63%
HSV	348°, 73%, 99%
XYZ	44.8228, 25.9716, 16.0152
YIQ	127.8210, 97.5120, 49.9920

Conversions

Conversions Part 2

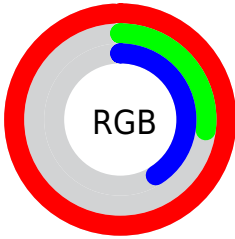
Format	Color
R_{YB}	252, 69, 105
Decimal	16532841
CIE _{Lab}	58.01, 70.18, 22.03
CIE _{LCh}	58, 73.553, 17.428
Yxy	25.9716, 0.5163, 0.2992
Android (android.graphics.Color)	4294722921 (0xFFFC4569)
YUV	127.8210, -11.2508, 108.9050
Hunter-Lab	50.9624, 67.8116, 17.0414

Details

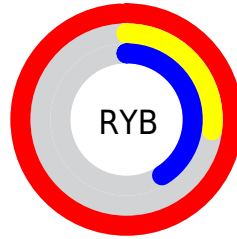
The Android color **4294722921** is a dark color, and the websafe version is hex **FF3366**. The color can be described as middle washed rose. A complement of this color would be **4282776792**, and the grayscale version is **4286611584**.

A 20% lighter version of the original color is **4294935196**, and **4290510906** is the 20% darker color. If you saturate the color by 10%, you get **4294716501**, and if you desaturate by 10%, it is **4294729341**.

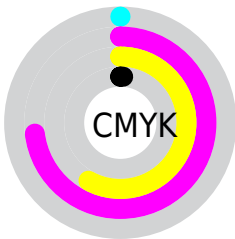
Distribution



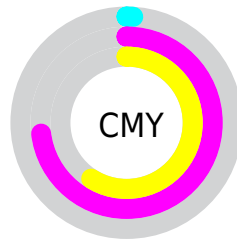
- Red (99%)
- Green (27%)
- Blue (41%)



- Red (99%)
- Yellow (27%)
- Blue (41%)



- Cyan (0%)
- Magenta (73%)
- Yellow (58%)
- Black (1%)



- Cyan (1%)
- Magenta (73%)
- Yellow (59%)

Brightness & Saturation Gradients

These gradients show how the Android color 4294722921 changes by changing the brightness by 10 percent. The first figure shows a shift by +10% for each color and the second figure -10%.

Similar to the brightness gradients but the following saturation gradients show a change of the Android color 4294722921 by changing the saturation by 10% instead.



4294722921



4294722921

4294967295



4292616017



4294935196



4290510906



4294942647



4288479269



4294950354



4286447634



4294957807



4284416001



4294965503



4282515459



4280287233



4278190080



4294722921



4294722921

 4294716501

 4294729341

 4294710081

 4294735761

 4294705202

 4294742438

 4294748858

 4294755278

 4294761698

 4294768119

 4294770687

Harmonies

Analogous

The Analogous color harmony consists of three colors that are next to each other on the color wheel.



4293937321



4294722921



4293419308

Triad

The Triadic color harmony groups three colors that are evenly spaced from another and form a triangle on the color wheel.



4294722921



4281180202



4278230015

Complementary

The Complementary color scheme is a pair of colors which are on the opposite of each other on the color wheel.



4294722921



4282776792

Split Complementary

Split-complementary colors differ from the complementary color scheme. The scheme consists of three colors, the original color and two neighbors of the complement color.



4278232554



4294722921



4278232685

Square

The Square scheme is like the rectangle color scheme, but the four colors are evenly spaced on the color wheel.



4294722921



4286944256



4278233264



4282484479

Rectangle

The Rectangle color scheme consists of four colors that form a rectangle on the color wheel.



4294722921



4291720704



4278233264



4278231039

Sweetspot

The Sweet Spot groups the original color and five complimentary colors.



4294722921



4294952914



4292298236



4286602853



4278190080



4286611584

Same Dimension

The Same Dimension uses a secret algorithm to generate beautiful new colors.



4294722921



4294910285



4294736965



4286410867



4290576421



4282187788

Inverse Universe

The Inverse Universe completely reimagines the original color for something new.



4294722921



4294910285



4282762748



4286410867



4290576421



4282187788

Previews

White Background



This preview shows how the Android color 4294722921 looks on a white background.

Color Contrast Check

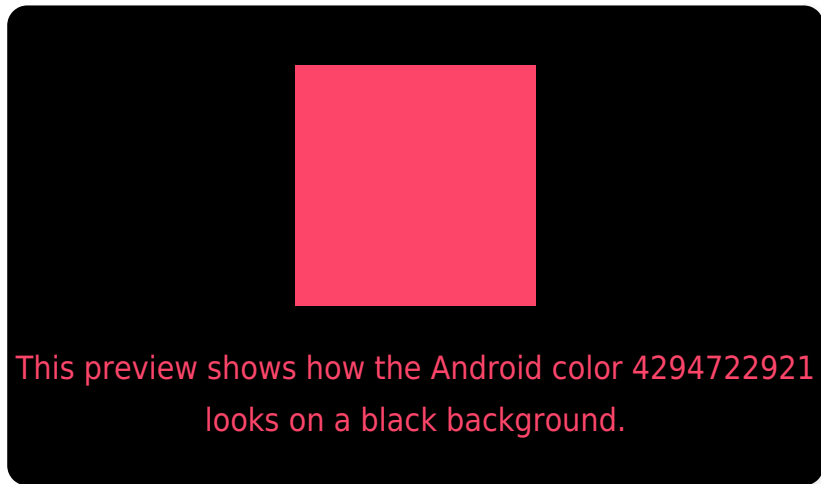
Large Text (above 18pt) WCAG AA ✓ Pass

Any Text WCAG AA ✗ Fail

Large Text (above 18pt) WCAG AAA ✗ Fail

Any Text WCAG AAA ✗ Fail

Black Background



Color Contrast Check

Large Text (above 18pt) WCAG AA ✓ Pass

Any Text WCAG AA ✓ Pass

Large Text (above 18pt) WCAG AAA ✓ Pass

Any Text WCAG AAA × Fail

If you want to check with other color combinations, try the [Color Contrast Checker](#).

Android 4294722921 Background



This preview shows how black text looks on a background with the Android color 4294722921.



This preview shows how white text looks on a background with the Android color 4294722921.

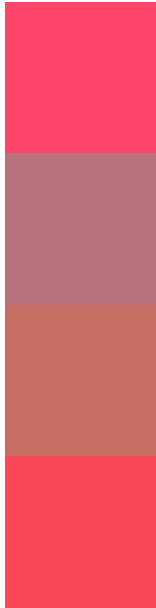
Color Blindness Simulation

Color vision deficiency is a very complex topic, and I could not describe the different causes any better than Wikipedia does, so if you want to learn more, you should check out their [article about color blindness](#).

Dichromacy



Trichromacy



Original Color
4294722921

Protanomaly
4290212478

Deuteranomaly
4291194467

Tritanomaly
4294658136

Monochromacy



Original Color
4294722921

Achromatopsia
4286611584

Achromatomaly
4289555320

CSS Examples

Text

The CSS property to change the color of the text to Android 4294722921 is called "color". The color property can be set on classes, ids or directly on the HTML element.

This example shows how text in the color `rgb(252, 69, 105)` looks like.

```
.text, #text, p{  
    color:rgb(252, 69, 105)  
}
```

If you want to add a text shadow in that color use the text-shadow property, you can generate a text shadow directly with our [CSS Text Shadow Generator](#).

Here you see how black text with a 4 pixel rgb(252, 69, 105) colored shadow looks like.

```
.shadow{ text-shadow: 4px 4px 2px rgb(252, 69, 105) }
```

Border

The CSS property to change the border of an element to Android 4294722921 is called "border". The border property can be set on classes, ids or directly on the HTML element.

This example shows the color as border, it can be applied via the CSS property "border" or "border-color".

```
.border, #border, table{ border:4px solid rgb(252, 69, 105) }
```

If only the border color should be changed use the property `border-color`.

```
.border{ border-color:rgb(252, 69, 105) }
```

If you want to add a box shadow in that color use:

Here you see how a box with a 4 pixel `rgb(252, 69, 105)` colored shadow looks like.

```
.boxshadow{ -moz-box-shadow:4px 4px 4px  
4px rgb(252, 69, 105); -webkit-box-  
shadow:4px 4px 4px 4px rgb(252, 69, 105);  
box-shadow:4px 4px 4px 4px rgb(252, 69,  
105) }
```

Background

The CSS property to change the background color of an element to Android 4294722921 is called "background". The background property can be set on classes, ids or directly on the HTML element.

```
.background, #background, body{  
background: rgb(252, 69, 105) }
```

If only the background color should be changed can be used:

```
.background{ background-color: rgb(252, 69,  
105) }
```

This example shows the color as background, it is applied via the CSS property "background".

To optimize and compress your CSS code, you can use our [online CSS compressor and optimizer](#) based on csstidy. If you want to create a linear or radial gradient as background or border, check our [CSS Gradient Generator](#).

Hey! You found this booklet interesting? Support Converting Colors with the new Membership Option!

The pro membership hides all ads, plus gives you double the colors in the color bucket, and more awesome pro features!

[Learn more, Memberships starting at \\$2.50/m!](#)

**Follow me
on Twitter!**

@ConvertingColor