

Converting Colors

Android(4294728592)

Have a look what the booklet for
Android(4294728592) contains.

Android(4294728592)	3
<i>Conversions</i>	4
<i>Details</i>	6
<i>Harmonies</i>	11
<i>Previews</i>	23
<i>Color Blindness Simulation</i>	26
<i>CSS Examples</i>	29

Color

Android(4294728592)

Conversions

Conversions Part 1

Format	Color
Hex	FC5B90
RGB	252, 91, 144
RGB Percent	99%, 36%, 56%
CMY	0.0118, 0.6431, 0.4353
CMYK	0.00, 0.64, 0.43, 0.01
HSL	340°, 96%, 67%
HSV	340°, 64%, 99%
XYZ	48.9200, 30.1912, 29.6347
YIQ	145.1810, 78.9430, 50.6150

Conversions

Conversions Part 2

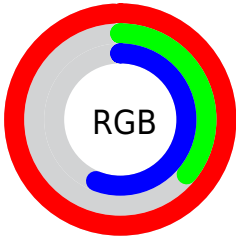
Format	Color
R _Y B	252, 91, 144
Decimal	16538512
CIE Lab	61.82, 65.27, 4.56
CIE LCh	62, 65.433, 3.995
Yxy	30.1912, 0.4499, 0.2776
Android (android.graphics.Color)	4294728592 (0xFFFC5B90)
YUV	145.1810, -0.5822, 93.6803
Hunter-Lab	54.9466, 62.7656, 6.4853

Details

The Android color `4294728592` is a light color, and the websafe version is hex `FF6699`. The color can be described as light muted rose. A complement of this color would be `4284218567`, and the grayscale version is `4287730065`.

A 20% lighter version of the original color is `4294940102`, and `4290647646` is the 20% darker color. If you saturate the color by 10%, you get `4294722175`, and if you desaturate by 10%, it is `4294735009`.

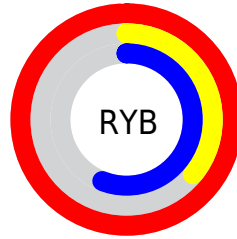
Distribution



Red (99%)

Green (36%)

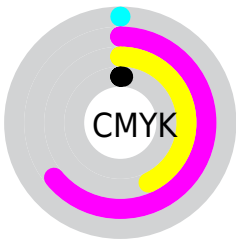
Blue (56%)



Red (99%)

Yellow (36%)

Blue (56%)

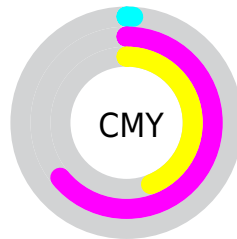


Cyan (0%)

Magenta (64%)

Yellow (43%)

Black (1%)



Cyan (1%)

Magenta (64%)

Yellow (44%)

Brightness & Saturation Gradients

These gradients show how the Android color 4294728592 changes by changing the brightness by 10 percent. The first figure shows a shift by +10% for each color and the second figure -10%.

Similar to the brightness gradients but the following saturation gradients show a change of the Android color 4294728592 by changing the saturation by 10% instead.

 4294728592

 4294728592

4294967295

 4292689270

 4294940102

 4290647646

 4294947554

 4288675911

 4294955006

 4286709808

 4294962431

 4284809244

 4283039747

 4281008129

 4278190080

 4294728592

 4294728592

■ 4294722175

■ 4294735009

■ 4294715758

■ 4294741426

■ 4294709085

■ 4294748099

■ 4294705235

■ 4294754516

■ 4294760933

■ 4294767349

4294770687

Harmonies

Analogous

The Analogous color harmony consists of three colors that are next to each other on the color wheel.



4292962505



4294728592



4294403928

Triad

The Triadic color harmony groups three colors that are evenly spaced from another and form a triangle on the color wheel.



4294728592



4285506602



4278233597

Complementary

The Complementary color scheme is a pair of colors which are on the opposite of each other on the color wheel.



4294728592



4284218567

Split Complementary

Split-complementary colors differ from the complementary color scheme. The scheme consists of three colors, the original color and two neighbors of the complement color.



4278235093



4294728592



4278234464

Square

The Square scheme is like the rectangle color scheme, but the four colors are evenly spaced on the color wheel.



4294728592



4289434883



4278235292



4278229759

Rectangle

The Rectangle color scheme consists of four colors that form a rectangle on the color wheel.



4294728592



4293293879



4278235292



4278234354

Sweetspot

The Sweet Spot groups the original color and five complimentary colors.



4294728592



4294954974



4291189756



4286603884



4278190080



4286611584

Same Dimension

The Same Dimension uses a secret algorithm to generate beautiful new colors.



4294728592



4294916987



4294735451



4286410869



4290576446



4282187796

Inverse Universe

The Inverse Universe completely reimagines the original color for something new.



4294728592



4294916987



4284211708



4286410869



4290576446



4282187796

Previews

White Background



This preview shows how the Android color 4294728592 looks on a white background.

Color Contrast Check

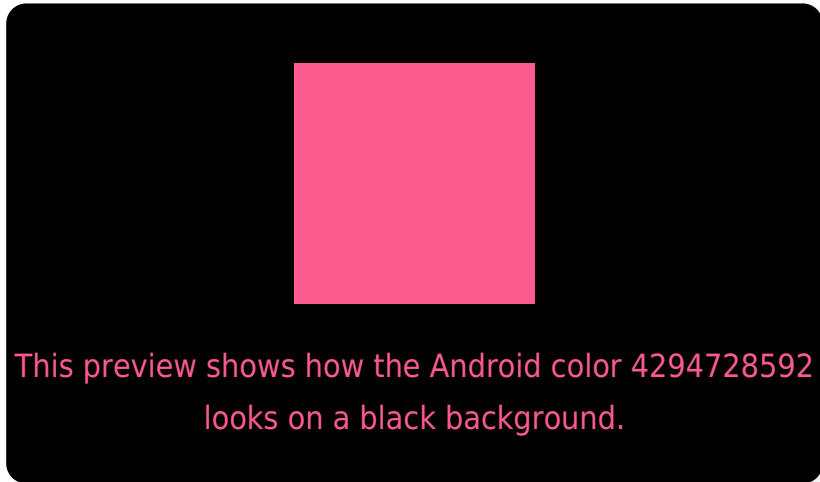
Large Text (above 18pt) WCAG AA × Fail

Any Text WCAG AA × Fail

Large Text (above 18pt) WCAG AAA × Fail

Any Text WCAG AAA × Fail

Black Background



Color Contrast Check

Large Text (above 18pt) WCAG AA ✓ Pass

Any Text WCAG AA ✓ Pass

Large Text (above 18pt) WCAG AAA ✓ Pass

Any Text WCAG AAA ✓ Pass

If you want to check with other color combinations, try the [Color Contrast Checker](#).

Android 4294728592 Background



This preview shows how black text looks on a background with the Android color 4294728592.



This preview shows how white text looks on a background with the Android color 4294728592.

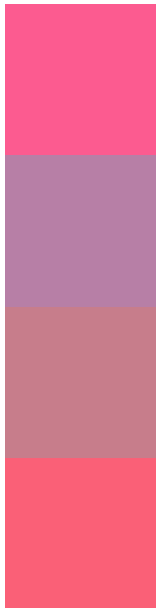
Color Blindness Simulation

Color vision deficiency is a very complex topic, and I could not describe the different causes any better than Wikipedia does, so if you want to learn more, you should check out their [article about color blindness](#).

Dichromacy



Trichromacy



Original Color
4294728592

Protanomaly
4290215846

Deuteranomaly
4291263883

Tritanomaly
4294598775

Monochromacy



Original Color
4294728592

Achromatopsia
4287730065

Achromatomaly
4290280849

CSS Examples

Text

The CSS property to change the color of the text to Android 4294728592 is called "color". The color property can be set on classes, ids or directly on the HTML element.

This example shows how text in the color `rgb(252, 91, 144)` looks like.

```
.text, #text, p{  
    color:rgb(252, 91, 144)  
}
```

If you want to add a text shadow in that color use the text-shadow property, you can generate a text shadow directly with our [CSS Text Shadow Generator](#).

Here you see how black text with a 4 pixel rgb(252, 91, 144) colored shadow looks like.

```
.shadow{ text-shadow: 4px 4px 2px rgb(252, 91, 144) }
```

Border

The CSS property to change the border of an element to Android 4294728592 is called "border". The border property can be set on classes, ids or directly on the HTML element.

This example shows the color as border, it can be applied via the CSS property "border" or "border-color".

```
.border, #border, table{ border:4px solid rgb(252, 91, 144) }
```

If only the border color should be changed use the property border-color.

```
.border{ border-color:rgb(252, 91, 144) }
```

If you want to add a box shadow in that color use:

Here you see how a box with a 4 pixel rgb(252, 91, 144) colored shadow looks like.

```
.boxshadow{ -moz-box-shadow:4px 4px 4px  
4px rgb(252, 91, 144); -webkit-box-  
shadow:4px 4px 4px 4px rgb(252, 91, 144);  
box-shadow:4px 4px 4px 4px rgb(252, 91,  
144) }
```

Background

The CSS property to change the background color of an element to Android 4294728592 is called "background". The background property can be set on classes, ids or directly on the HTML element.

```
.background, #background, body{  
background: rgb(252, 91, 144) }
```

If only the background color should be changed can be used:

```
.background{ background-color: rgb(252, 91,  
144) }
```

This example shows the color as background, it is applied via the CSS property "background".

To optimize and compress your CSS code, you can use our [online CSS compressor and optimizer](#) based on csstidy. If you want to create a linear or radial gradient as background or border, check our [CSS Gradient Generator](#).

Hey! You found this booklet interesting? Support Converting Colors with the new Membership Option!

The pro membership hides all ads, plus gives you double the colors in the color bucket, and more awesome pro features!

[Learn more, Memberships starting at \\$2.50/m!](#)

**Follow me
on Twitter!**

@ConvertingColor