

Converting Colors

Android(4294731143)

Have a look what the booklet for
Android(4294731143) contains.

Android(4294731143)	3
<i>Conversions</i>	4
<i>Details</i>	6
<i>Harmonies</i>	11
<i>Previews</i>	23
<i>Color Blindness Simulation</i>	26
<i>CSS Examples</i>	29

Color

Android(4294731143)

Conversions

Conversions Part 1

Format	Color
Hex	FC6587
RGB	252, 101, 135
RGB Percent	99%, 40%, 53%
CMY	0.0118, 0.6039, 0.4706
CMYK	0.00, 0.60, 0.46, 0.01
HSL	346°, 96%, 69%
HSV	346°, 60%, 99%
XYZ	49.1717, 31.7521, 26.4588
YIQ	150.0250, 79.0820, 42.5860

Conversions

Conversions Part 2

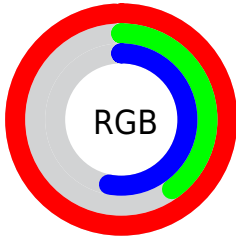
Format	Color
R _{YB}	252, 101, 135
Decimal	16541063
CIE Lab	63.14, 60.28, 11.64
CIE LCh	63, 61.390, 10.928
Yxy	31.7521, 0.4579, 0.2957
Android (android.graphics.Color)	4294731143 (0xFFFC6587)
YUV	150.0250, -7.4073, 89.4321
Hunter-Lab	56.3490, 57.1535, 11.6045

Details

The Android color **4294731143** is a light color, and the websafe version is hex **FF6699**. A complement of this color would be **4284873946**, and the grayscale version is **4288059030**.

A 20% lighter version of the original color is **4294942396**, and **4290652502** is the 20% darker color. If you saturate the color by 10%, you get **4294724723**, and if you desaturate by 10%, it is **4294737563**.

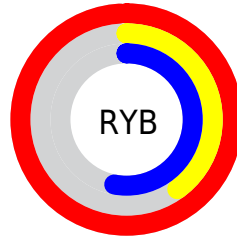
Distribution



Red (99%)

Green (40%)

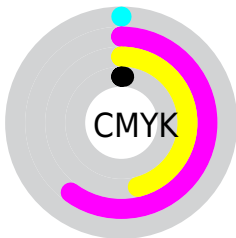
Blue (53%)



Red (99%)

Yellow (40%)

Blue (53%)

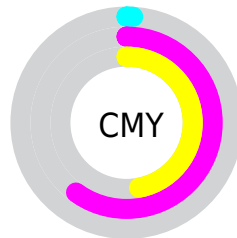


Cyan (0%)

Magenta (60%)

Yellow (46%)

Black (1%)



Cyan (1%)

Magenta (60%)

Yellow (47%)

Brightness & Saturation Gradients

These gradients show how the Android color 4294731143 changes by changing the brightness by 10 percent. The first figure shows a shift by +10% for each color and the second figure -10%.

Similar to the brightness gradients but the following saturation gradients show a change of the Android color 4294731143 by changing the saturation by 10% instead.

 4294731143

 4294731143

4294967295

 4292692078

 4294942396

 4290652502

 4294949592

 4288675903

 4294957044

 4286709801

 4294964735

 4284809237

 4282974210

 4281008129

 4278190080

 4294731143

 4294731143

■ 4294724723

■ 4294737563

■ 4294718304

■ 4294743982

■ 4294711628

■ 4294750658

■ 4294705209

■ 4294757077

■ 4294763497

■ 4294769916

■ 4294770687

Harmonies

Analogous

The Analogous color harmony consists of three colors that are next to each other on the color wheel.



4293487806



4294731143



4294079316

Triad

The Triadic color harmony groups three colors that are evenly spaced from another and form a triangle on the color wheel.



4294731143



4284918080



4278233343

Complementary

The Complementary color scheme is a pair of colors which are on the opposite of each other on the color wheel.



4294731143



4284873946

Split Complementary

Split-complementary colors differ from the complementary color scheme. The scheme consists of three colors, the original color and two neighbors of the complement color.



4278235615



4294731143



4278235507

Square

The Square scheme is like the rectangle color scheme, but the four colors are evenly spaced on the color wheel.



4294731143



4288846879



4278236076



4283341055

Rectangle

The Rectangle color scheme consists of four colors that form a rectangle on the color wheel.



4294731143



4292772407



4278236076



4278234360

Sweetspot

The Sweet Spot groups the original color and five complimentary colors.



4294731143



4294955483



4292437500



4286604138



4278190080



4286611584

Same Dimension

The Same Dimension uses a secret algorithm to generate beautiful new colors.



4294731143



4294920049



4294741349



4286410867



4290576426



4282187790

Inverse Universe

The Inverse Universe completely reimagines the original color for something new.



4294731143



4294920049



4284863740



4286410867



4290576426



4282187790

Previews

White Background



This preview shows how the Android color 4294731143 looks on a white background.

Color Contrast Check

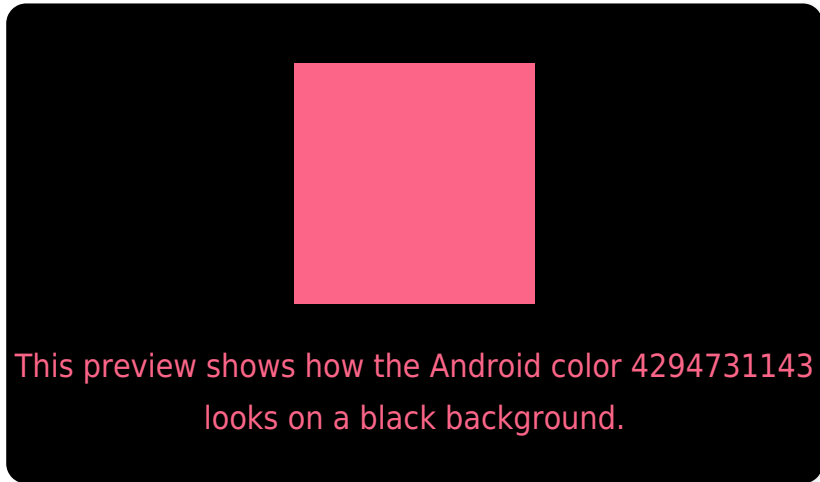
Large Text (above 18pt) WCAG AA × Fail

Any Text WCAG AA × Fail

Large Text (above 18pt) WCAG AAA × Fail

Any Text WCAG AAA × Fail

Black Background



Color Contrast Check

Large Text (above 18pt) WCAG AA ✓ Pass

Any Text WCAG AA ✓ Pass

Large Text (above 18pt) WCAG AAA ✓ Pass

Any Text WCAG AAA ✓ Pass

If you want to check with other color combinations, try the [Color Contrast Checker](#).

Android 4294731143 Background



This preview shows how black text looks on a background with the Android color 4294731143.



This preview shows how white text looks on a background with the Android color 4294731143.

Color Blindness Simulation

Color vision deficiency is a very complex topic, and I could not describe the different causes any better than Wikipedia does, so if you want to learn more, you should check out their [article about color blindness](#).

Dichromacy

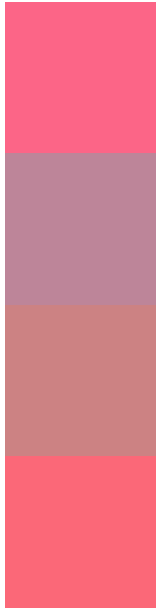


Original Color
4294731143

Protanopia
4288256163

Deuteranopia
4289827712

Trichromacy



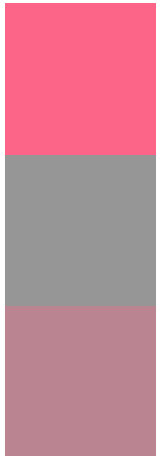
Original Color
4294731143

Protanomaly
4290610585

Deuteranomaly
4291592835

Tritanomaly
4294666360

Monochromacy



Original Color
4294731143

Achromatopsia
4288059030

Achromatomaly
4290479249

CSS Examples

Text

The CSS property to change the color of the text to Android 4294731143 is called "color". The color property can be set on classes, ids or directly on the HTML element.

This example shows how text in the color `rgb(252, 101, 135)` looks like.

```
.text, #text, p{  
    color:rgb(252, 101, 135)  
}
```

If you want to add a text shadow in that color use the text-shadow property, you can generate a text shadow directly with our [CSS Text Shadow Generator](#).

Here you see how black text with a 4 pixel rgb(252, 101, 135) colored shadow looks like.

```
.shadow{ text-shadow: 4px 4px 2px rgb(252, 101, 135) }
```

Border

The CSS property to change the border of an element to Android 4294731143 is called "border". The border property can be set on classes, ids or directly on the HTML element.

This example shows the color as border, it can be applied via the CSS property "border" or "border-color".

```
.border, #border, table{ border:4px solid rgb(252, 101, 135) }
```

If only the border color should be changed use the property `border-color`.

```
.border{ border-color:rgb(252, 101, 135) }
```

If you want to add a box shadow in that color use:

Here you see how a box with a 4 pixel `rgb(252, 101, 135)` colored shadow looks like.

```
.boxshadow{ -moz-box-shadow:4px 4px 4px  
4px rgb(252, 101, 135); -webkit-box-  
shadow:4px 4px 4px 4px rgb(252, 101, 135);  
box-shadow:4px 4px 4px 4px rgb(252, 101,  
135) }
```

Background

The CSS property to change the background color of an element to Android 4294731143 is called "background". The background property can be set on classes, ids or directly on the HTML element.

```
.background, #background, body{  
background: rgb(252, 101, 135) }
```

If only the background color should be changed can be used:

```
.background{ background-color: rgb(252,  
101, 135) }
```

This example shows the color as background, it is applied via the CSS property "background".

To optimize and compress your CSS code, you can use our [online CSS compressor and optimizer](#) based on csstidy. If you want to create a linear or radial gradient as background or border, check our [CSS Gradient Generator](#).

Hey! You found this booklet interesting? Support Converting Colors with the new Membership Option!

The pro membership hides all ads, plus gives you double the colors in the color bucket, and more awesome pro features!

[Learn more, Memberships starting at \\$2.50/m!](#)

**Follow me
on Twitter!**

@ConvertingColor