

Converting Colors

Android(4294787945)

Have a look what the booklet for
Android(4294787945) contains.

Android(4294787945)	3
<i>Conversions</i>	4
<i>Details</i>	6
<i>Harmonies</i>	11
<i>Previews</i>	23
<i>Color Blindness Simulation</i>	26
<i>CSS Examples</i>	29

Color

Android(4294787945)

Conversions

Conversions Part 1

Format	Color
Hex	FD4369
RGB	253, 67, 105
RGB Percent	99%, 26%, 41%
CMY	0.0078, 0.7373, 0.5882
CMYK	0.00, 0.74, 0.58, 0.01
HSL	348°, 98%, 63%
HSV	348°, 74%, 99%
XYZ	45.0650, 25.9169, 15.9919
YIQ	126.9460, 98.6580, 51.2500

Conversions

Conversions Part 2

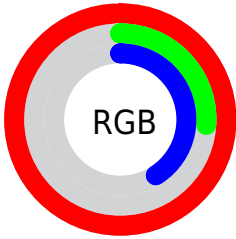
Format	Color
R_{YB}	253, 67, 105
Decimal	16597865
CIE _{Lab}	57.96, 71.10, 21.99
CIE _{LCh}	58, 74.424, 17.187
Yxy	25.9169, 0.5181, 0.2980
Android (android.graphics.Color)	4294787945 (0xFFFD4369)
YUV	126.9460, -10.8194, 110.5494
Hunter-Lab	50.9086, 68.9204, 17.0113

Details

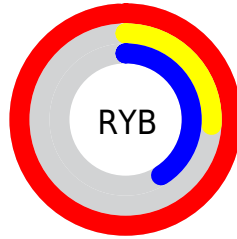
The Android color **4294787945** is a dark color, and the websafe version is hex **FF3366**. The color can be described as middle washed rose. A complement of this color would be **4282645975**, and the grayscale version is **4286545791**.

A 20% lighter version of the original color is **4294934684**, and **4290576442** is the 20% darker color. If you saturate the color by 10%, you get **4294781525**, and if you desaturate by 10%, it is **4294794365**.

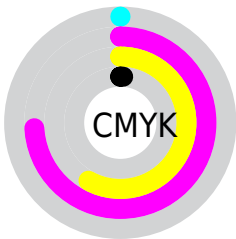
Distribution



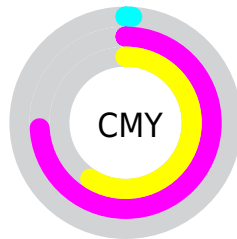
- Red (99%)
- Green (26%)
- Blue (41%)



- Red (99%)
- Yellow (26%)
- Blue (41%)



- Cyan (0%)
- Magenta (74%)
- Yellow (58%)
- Black (1%)



- Cyan (1%)
- Magenta (74%)
- Yellow (59%)

Brightness & Saturation Gradients

These gradients show how the Android color 4294787945 changes by changing the brightness by 10 percent. The first figure shows a shift by +10% for each color and the second figure -10%.

Similar to the brightness gradients but the following saturation gradients show a change of the Android color 4294787945 by changing the saturation by 10% instead.



4294787945



4294787945

4294967295



4292680529



4294934684



4290576442



4294942391



4288544805



4294949842



4286513170



4294957550



4284481537



4294965247



4282580995



4280352769



4278190080



4294787945



4294787945

■ 4294781525

■ 4294794365

■ 4294774849

■ 4294801041

■ 4294770740

■ 4294807461

■ 4294813882

■ 4294820558

■ 4294826978

■ 4294833398

4294836223

Harmonies

Analogous

The Analogous color harmony consists of three colors that are next to each other on the color wheel.



4294002346



4294787945



4293484587

Triad

The Triadic color harmony groups three colors that are evenly spaced from another and form a triangle on the color wheel.



4294787945



4281114663



4278230015

Complementary

The Complementary color scheme is a pair of colors which are on the opposite of each other on the color wheel.



4294787945



4282645975

Split Complementary

Split-complementary colors differ from the complementary color scheme. The scheme consists of three colors, the original color and two neighbors of the complement color.



4278232554



4294787945



4278232940

Square

The Square scheme is like the rectangle color scheme, but the four colors are evenly spaced on the color wheel.



4294787945



4286944256



4278233264



4282156799

Rectangle

The Rectangle color scheme consists of four colors that form a rectangle on the color wheel.



4294787945



4291785984



4278233264



4278231295

Sweetspot

The Sweet Spot groups the original color and five complimentary colors.



4294787945



4294952914



4292166653



4286602853



4278190080



4286611584

Same Dimension

The Same Dimension uses a secret algorithm to generate beautiful new colors.



4294787945



4294909772



4294801475



4286608245



4290707495



4282384397

Inverse Universe

The Inverse Universe completely reimagines the original color for something new.



4294787945



4294909772



4282632445



4286608245



4290707495



4282384397

Previews

White Background



This preview shows how the Android color 4294787945 looks on a white background.

Color Contrast Check

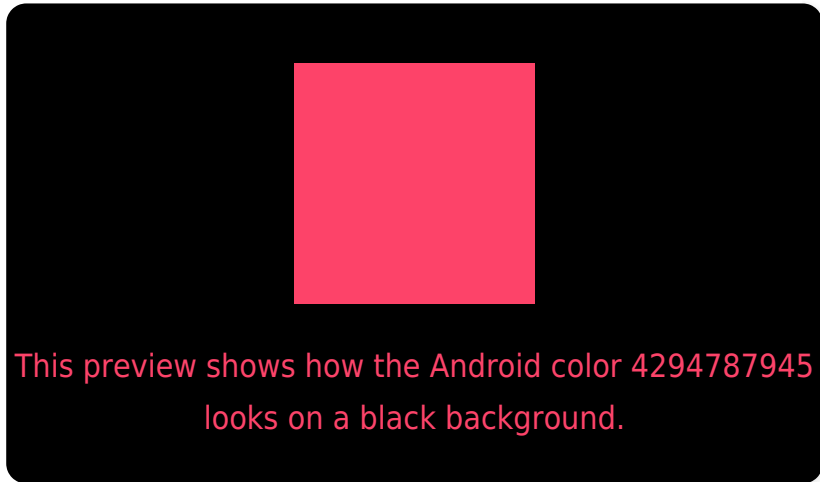
Large Text (above 18pt) WCAG AA ✓ Pass

Any Text WCAG AA × Fail

Large Text (above 18pt) WCAG AAA × Fail

Any Text WCAG AAA × Fail

Black Background



Color Contrast Check

Large Text (above 18pt) WCAG AA ✓ Pass

Any Text WCAG AA ✓ Pass

Large Text (above 18pt) WCAG AAA ✓ Pass

Any Text WCAG AAA × Fail

If you want to check with other color combinations, try the [Color Contrast Checker](#).

Android 4294787945 Background



This preview shows how black text looks on a background with the Android color 4294787945.



This preview shows how white text looks on a background with the Android color 4294787945.

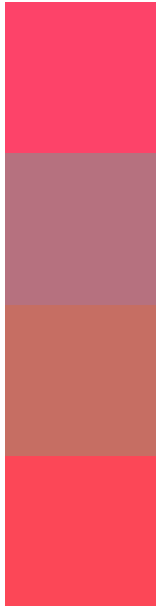
Color Blindness Simulation

Color vision deficiency is a very complex topic, and I could not describe the different causes any better than Wikipedia does, so if you want to learn more, you should check out their [article about color blindness](#).

Dichromacy



Trichromacy



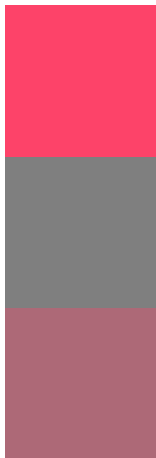
Original Color
4294787945

Protanomaly
4290146687

Deuteranomaly
4291194467

Tritanomaly
4294723415

Monochromacy



Original Color
4294787945

Achromatopsia
4286545791

Achromatomaly
4289554807

CSS Examples

Text

The CSS property to change the color of the text to Android 4294787945 is called "color". The color property can be set on classes, ids or directly on the HTML element.

This example shows how text in the color `rgb(253, 67, 105)` looks like.

```
.text, #text, p{  
    color:rgb(253, 67, 105)  
}
```

If you want to add a text shadow in that color use the text-shadow property, you can generate a text shadow directly with our [CSS Text Shadow Generator](#).

Here you see how black text with a 4 pixel rgb(253, 67, 105) colored shadow looks like.

```
.shadow{ text-shadow: 4px 4px 2px rgb(253, 67, 105) }
```

Border

The CSS property to change the border of an element to Android 4294787945 is called "border". The border property can be set on classes, ids or directly on the HTML element.

This example shows the color as border, it can be applied via the CSS property "border" or "border-color".

```
.border, #border, table{ border:4px solid rgb(253, 67, 105) }
```

If only the border color should be changed use the property border-color.

```
.border{ border-color:rgb(253, 67, 105) }
```

If you want to add a box shadow in that color use:

Here you see how a box with a 4 pixel rgb(253, 67, 105) colored shadow looks like.

```
.boxshadow{ -moz-box-shadow:4px 4px 4px  
4px rgb(253, 67, 105); -webkit-box-  
shadow:4px 4px 4px 4px rgb(253, 67, 105);  
box-shadow:4px 4px 4px 4px rgb(253, 67,  
105) }
```

Background

The CSS property to change the background color of an element to Android 4294787945 is called "background". The background property can be set on classes, ids or directly on the HTML element.

```
.background, #background, body{  
background: rgb(253, 67, 105) }
```

If only the background color should be changed can be used:

```
.background{ background-color: rgb(253, 67,  
105) }
```

This example shows the color as background, it is applied via the CSS property "background".

To optimize and compress your CSS code, you can use our [online CSS compressor and optimizer](#) based on csstidy. If you want to create a linear or radial gradient as background or border, check our [CSS Gradient Generator](#).

Hey! You found this booklet interesting? Support Converting Colors with the new Membership Option!

The pro membership hides all ads, plus gives you double the colors in the color bucket, and more awesome pro features!

[Learn more, Memberships starting at \\$2.50/m!](#)

**Follow me
on Twitter!**

@ConvertingColor