

Converting Colors

Android(4294788731)

Have a look what the booklet for
Android(4294788731) contains.

Android(4294788731)	3
<i>Conversions</i>	4
<i>Details</i>	6
<i>Harmonies</i>	11
<i>Previews</i>	23
<i>Color Blindness Simulation</i>	26
<i>CSS Examples</i>	29

Color

Android(4294788731)

Conversions

Conversions Part 1

Format	Color
Hex	FD467B
RGB	253, 70, 123
RGB Percent	99%, 27%, 48%
CMY	0.0078, 0.7255, 0.5176
CMYK	0.00, 0.72, 0.51, 0.01
HSL	343°, 98%, 63%
HSV	343°, 72%, 99%
XYZ	46.2733, 26.6930, 21.4523
YIQ	130.7590, 92.0550, 55.2790

Conversions

Conversions Part 2

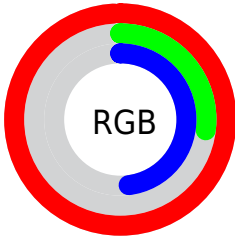
Format	Color
R_{YB}	253, 70, 123
Decimal	16598651
CIE _{Lab}	58.69, 71.40, 12.40
CIE _{LCh}	59, 72.472, 9.850
Yxy	26.6930, 0.4901, 0.2827
Android (android.graphics.Color)	4294788731 (0xFFFD467B)
YUV	130.7590, -3.8252, 107.2054
Hunter-Lab	51.6653, 69.4569, 11.5475

Details

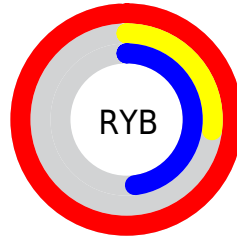
The Android color **4294788731** is a dark color, and the websafe version is hex **FF3366**. The color can be described as middle washed rose. A complement of this color would be **4282842568**, and the grayscale version is **4286808963**.

A 20% lighter version of the original color is **4294935471**, and **4290641995** is the 20% darker color. If you saturate the color by 10%, you get **4294782313**, and if you desaturate by 10%, it is **4294795149**.

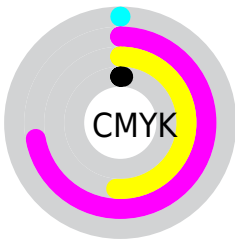
Distribution



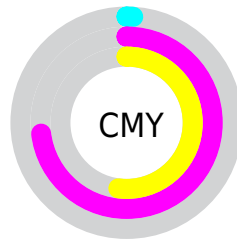
- Red (99%)
- Green (27%)
- Blue (48%)



- Red (99%)
- Yellow (27%)
- Blue (48%)



- Cyan (0%)
- Magenta (72%)
- Yellow (51%)
- Black (1%)



- Cyan (1%)
- Magenta (73%)
- Yellow (52%)

Brightness & Saturation Gradients

These gradients show how the Android color 4294788731 changes by changing the brightness by 10 percent. The first figure shows a shift by +10% for each color and the second figure -10%.

Similar to the brightness gradients but the following saturation gradients show a change of the Android color 4294788731 by changing the saturation by 10% instead.

 4294788731

 4294788731

4294967295

 4292681826

 4294935471

 4290641995

 4294942922

 4288610357

 4294950631

 4286578720

 4294958335

 4284612616

 4294966015

 4282712067

 4280549377

 4278190080

 4294788731

 4294788731

■ 4294782313

■ 4294795149

■ 4294775639

■ 4294801823

■ 4294770761

■ 4294808241

■ 4294814659

■ 4294821333

■ 4294827751

■ 4294834169

4294836223

Harmonies

Analogous

The Analogous color harmony consists of three colors that are next to each other on the color wheel.



4293415610



4294788731



4294007870

Triad

The Triadic color harmony groups three colors that are evenly spaced from another and form a triangle on the color wheel.



4294788731



4283408155



4278231295

Complementary

The Complementary color scheme is a pair of colors which are on the opposite of each other on the color wheel.



4294788731



4282842568

Split Complementary

Split-complementary colors differ from the complementary color scheme. The scheme consists of three colors, the original color and two neighbors of the complement color.



4278233310



4294788731



4278232927

Square

The Square scheme is like the rectangle color scheme, but the four colors are evenly spaced on the color wheel.



4294788731



4288123136



4278233761



4278226687

Rectangle

The Rectangle color scheme consists of four colors that form a rectangle on the color wheel.



4294788731



4292505619



4278233761



4278232315

Sweetspot

The Sweet Spot groups the original color and five complimentary colors.



4294788731



4294952919



4291184381



4286602856



4278190080



4286611584

Same Dimension

The Same Dimension uses a secret algorithm to generate beautiful new colors.



4294788731



4294910305



4294798150



4286608246



4290707511



4282384402

Inverse Universe

The Inverse Universe completely reimagines the original color for something new.



4294788731



4294910305



4282833149



4286608246



4290707511



4282384402

Previews

White Background



This preview shows how the Android color 4294788731 looks on a white background.

Color Contrast Check

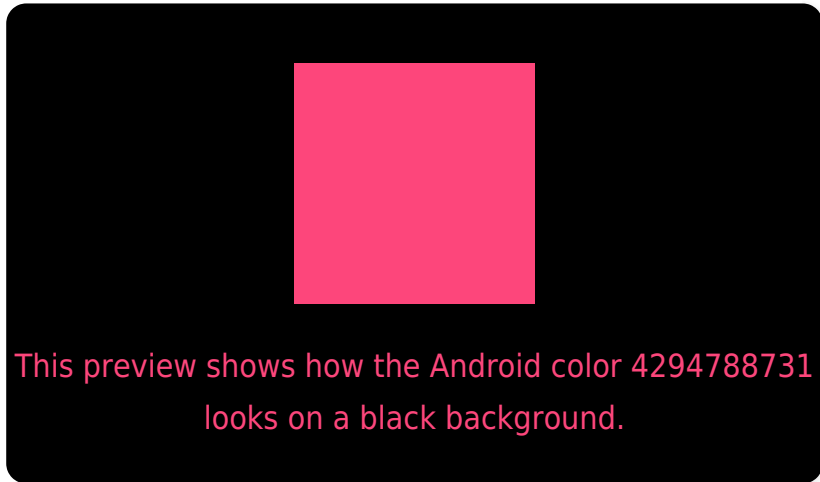
Large Text (above 18pt) WCAG AA ✓ Pass

Any Text WCAG AA × Fail

Large Text (above 18pt) WCAG AAA × Fail

Any Text WCAG AAA × Fail

Black Background



Color Contrast Check

Large Text (above 18pt) WCAG AA ✓ Pass

Any Text WCAG AA ✓ Pass

Large Text (above 18pt) WCAG AAA ✓ Pass

Any Text WCAG AAA × Fail

If you want to check with other color combinations, try the [Color Contrast Checker](#).

Android 4294788731 Background



This preview shows how black text looks on a background with the Android color 4294788731.



This preview shows how white text looks on a background with the Android color 4294788731.

Color Blindness Simulation

Color vision deficiency is a very complex topic, and I could not describe the different causes any better than Wikipedia does, so if you want to learn more, you should check out their [article about color blindness](#).

Dichromacy

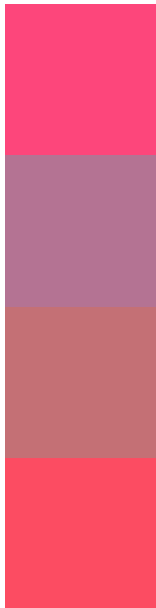


Original Color
4294788731

Protanopia
4287270048

Deuteranopia
4288972914

Trichromacy



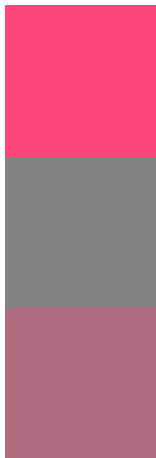
Original Color
4294788731

Protanomaly
4290016147

Deuteranomaly
4291063925

Tritanomaly
4294724706

Monochromacy



Original Color
4294788731

Achromatopsia
4286808963

Achromatomaly
4289686912

CSS Examples

Text

The CSS property to change the color of the text to Android 4294788731 is called "color". The color property can be set on classes, ids or directly on the HTML element.

This example shows how text in the color `rgb(253, 70, 123)` looks like.

```
.text, #text, p{  
    color:rgb(253, 70, 123)  
}
```

If you want to add a text shadow in that color use the text-shadow property, you can generate a text shadow directly with our [CSS Text Shadow Generator](#).

Here you see how black text with a 4 pixel rgb(253, 70, 123) colored shadow looks like.

```
.shadow{ text-shadow: 4px 4px 2px rgb(253, 70, 123) }
```

Border

The CSS property to change the border of an element to Android 4294788731 is called "border". The border property can be set on classes, ids or directly on the HTML element.

This example shows the color as border, it can be applied via the CSS property "border" or "border-color".

```
.border, #border, table{ border:4px solid rgb(253, 70, 123) }
```

If only the border color should be changed use the property `border-color`.

```
.border{ border-color:rgb(253, 70, 123) }
```

If you want to add a box shadow in that color use:

Here you see how a box with a 4 pixel `rgb(253, 70, 123)` colored shadow looks like.

```
.boxshadow{ -moz-box-shadow:4px 4px 4px  
4px rgb(253, 70, 123); -webkit-box-  
shadow:4px 4px 4px 4px rgb(253, 70, 123);  
box-shadow:4px 4px 4px 4px rgb(253, 70,  
123) }
```

Background

The CSS property to change the background color of an element to Android 4294788731 is called "background". The background property can be set on classes, ids or directly on the HTML element.

```
.background, #background, body{  
background: rgb(253, 70, 123) }
```

If only the background color should be changed can be used:

```
.background{ background-color: rgb(253, 70,  
123) }
```

This example shows the color as background, it is applied via the CSS property "background".

To optimize and compress your CSS code, you can use our [online CSS compressor and optimizer](#) based on csstidy. If you want to create a linear or radial gradient as background or border, check our [CSS Gradient Generator](#).

Hey! You found this booklet interesting? Support Converting Colors with the new Membership Option!

The pro membership hides all ads, plus gives you double the colors in the color bucket, and more awesome pro features!

[Learn more, Memberships starting at \\$2.50/m!](#)

**Follow me
on Twitter!**

@ConvertingColor