

Converting Colors

Android(4294790795)

Have a look what the booklet for
Android(4294790795) contains.

Android(4294790795)	3
<i>Conversions</i>	4
<i>Details</i>	6
<i>Harmonies</i>	11
<i>Previews</i>	23
<i>Color Blindness Simulation</i>	26
<i>CSS Examples</i>	29

Color

Android(4294790795)

Conversions

Conversions Part 1

Format	Color
Hex	FD4E8B
RGB	253, 78, 139
RGB Percent	99%, 31%, 55%
CMY	0.0078, 0.6941, 0.4549
CMYK	0.00, 0.69, 0.45, 0.01
HSL	339°, 98%, 65%
HSV	339°, 69%, 99%
XYZ	47.8926, 28.1955, 27.3442
YIQ	137.2790, 84.7190, 56.0710

Conversions

Conversions Part 2

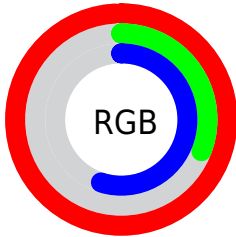
Format	Color
R_{YB}	253, 78, 139
Decimal	16600715
CIE _{Lab}	60.06, 70.01, 4.96
CIE _{LCh}	60, 70.185, 4.056
Yxy	28.1955, 0.4630, 0.2726
Android (android.graphics.Color)	4294790795 (0xFFFD4E8B)
YUV	137.2790, 0.8485, 101.4873
Hunter-Lab	53.0994, 68.0726, 6.6376

Details

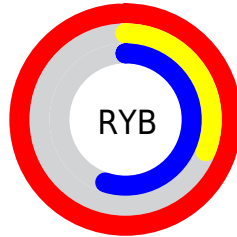
The Android color **4294790795** is a light color, and the websafe version is hex **FF6699**. The color can be described as light washed rose. A complement of this color would be **4283366848**, and the grayscale version is **4287203721**.

A 20% lighter version of the original color is **4294937280**, and **4290707545** is the 20% darker color. If you saturate the color by 10%, you get **4294784379**, and if you desaturate by 10%, it is **4294797211**.

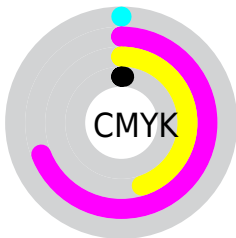
Distribution



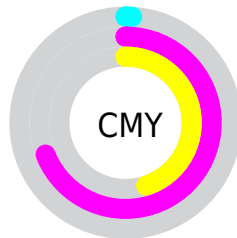
- Red (99%)
- Green (31%)
- Blue (55%)



- Red (99%)
- Yellow (31%)
- Blue (55%)



- Cyan (0%)
- Magenta (69%)
- Yellow (45%)
- Black (1%)



- Cyan (1%)
- Magenta (69%)
- Yellow (45%)

Brightness & Saturation Gradients

These gradients show how the Android color 4294790795 changes by changing the brightness by 10 percent. The first figure shows a shift by +10% for each color and the second figure -10%.

Similar to the brightness gradients but the following saturation gradients show a change of the Android color 4294790795 by changing the saturation by 10% instead.

 4294790795

 4294790795

4294967295

 4292750450

 4294937280

 4290707545

 4294944732

 4288675906

 4294952185

 4286709804

 4294959871

 4284743704

 4282974212

 4280811521

 4278190080

 4294790795

 4294790795

■ 4294784379

■ 4294797211

■ 4294777706

■ 4294803884

■ 4294771290

■ 4294810300

■ 4294770776

■ 4294816717

■ 4294823389

■ 4294829806

4294836222

4294836223

Harmonies

Analogous

The Analogous color harmony consists of three colors that are next to each other on the color wheel.



4292959944



4294790795



4294401359

Triad

The Triadic color harmony groups three colors that are evenly spaced from another and form a triangle on the color wheel.



4294790795



4284915991



4278232575

Complementary

The Complementary color scheme is a pair of colors which are on the opposite of each other on the color wheel.



4294790795



4283366848

Split Complementary

Split-complementary colors differ from the complementary color scheme. The scheme consists of three colors, the original color and two neighbors of the complement color.



4278234325



4294790795



4278233431

Square

The Square scheme is like the rectangle color scheme, but the four colors are evenly spaced on the color wheel.



4294790795



4289106176



4278234520



4278228735

Rectangle

The Rectangle color scheme consists of four colors that form a rectangle on the color wheel.



4294790795



4293161002



4278234520



4278233332

Sweetspot

The Sweet Spot groups the original color and five complimentary colors.



4294790795



4294953436



4290793213



4286603371



4278190080



4286611584

Same Dimension

The Same Dimension uses a secret algorithm to generate beautiful new colors.



4294790795



4294912885



4294797390



4286608247



4290707523



4282384406

Inverse Universe

The Inverse Universe completely reimagines the original color for something new.



4294790795



4294912885



4283360253



4286608247



4290707523



4282384406

Previews

White Background



This preview shows how the Android color 4294790795 looks on a white background.

Color Contrast Check

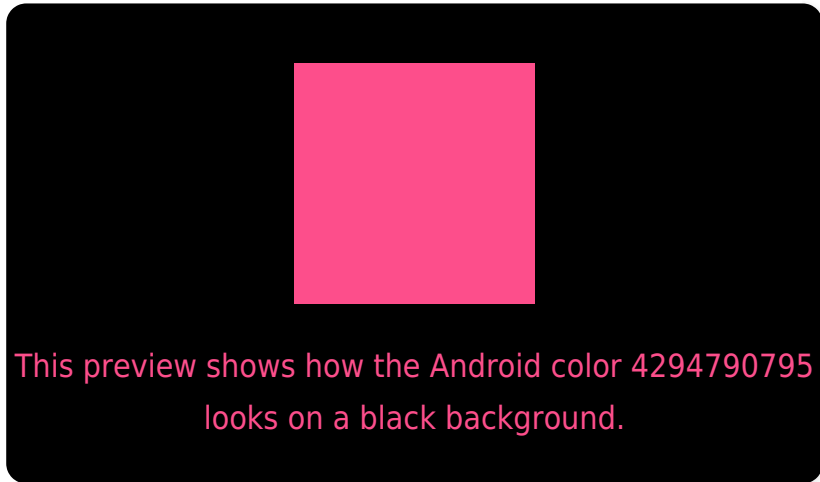
Large Text (above 18pt) WCAG AA ✓ Pass

Any Text WCAG AA ✗ Fail

Large Text (above 18pt) WCAG AAA ✗ Fail

Any Text WCAG AAA ✗ Fail

Black Background



Color Contrast Check

Large Text (above 18pt) WCAG AA ✓ Pass

Any Text WCAG AA ✓ Pass

Large Text (above 18pt) WCAG AAA ✓ Pass

Any Text WCAG AAA × Fail

If you want to check with other color combinations, try the [Color Contrast Checker](#).

Android 4294790795 Background



This preview shows how black text looks on a background with the Android color 4294790795.



This preview shows how white text looks on a background with the Android color 4294790795.

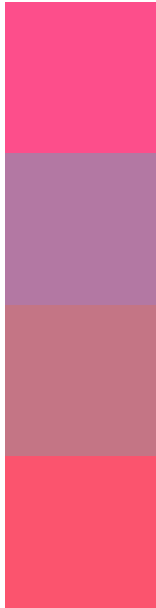
Color Blindness Simulation

Color vision deficiency is a very complex topic, and I could not describe the different causes any better than Wikipedia does, so if you want to learn more, you should check out their [article about color blindness](#).

Dichromacy



Trichromacy



Original Color
4294790795

Protanomaly
4289951907

Deuteranomaly
4291065221

Tritanomaly
4294661230

Monochromacy



Original Color
4294790795

Achromatopsia
4287203721

Achromatomaly
4289950858

CSS Examples

Text

The CSS property to change the color of the text to Android 4294790795 is called "color". The color property can be set on classes, ids or directly on the HTML element.

This example shows how text in the color `rgb(253, 78, 139)` looks like.

```
.text, #text, p{  
    color:rgb(253, 78, 139)  
}
```

If you want to add a text shadow in that color use the text-shadow property, you can generate a text shadow directly with our [CSS Text Shadow Generator](#).

Here you see how black text with a 4 pixel rgb(253, 78, 139) colored shadow looks like.

```
.shadow{ text-shadow: 4px 4px 2px rgb(253, 78, 139) }
```

Border

The CSS property to change the border of an element to Android 4294790795 is called "border". The border property can be set on classes, ids or directly on the HTML element.

This example shows the color as border, it can be applied via the CSS property "border" or "border-color".

```
.border, #border, table{ border:4px solid rgb(253, 78, 139) }
```

If only the border color should be changed use the property `border-color`.

```
.border{ border-color:rgb(253, 78, 139) }
```

If you want to add a box shadow in that color use:

Here you see how a box with a 4 pixel `rgb(253, 78, 139)` colored shadow looks like.

```
.boxshadow{ -moz-box-shadow:4px 4px 4px  
4px rgb(253, 78, 139); -webkit-box-  
shadow:4px 4px 4px 4px rgb(253, 78, 139);  
box-shadow:4px 4px 4px 4px rgb(253, 78,  
139) }
```

Background

The CSS property to change the background color of an element to Android 4294790795 is called "background". The background property can be set on classes, ids or directly on the HTML element.

```
.background, #background, body{  
background: rgb(253, 78, 139) }
```

If only the background color should be changed can be used:

```
.background{ background-color: rgb(253, 78,  
139) }
```

This example shows the color as background, it is applied via the CSS property "background".

To optimize and compress your CSS code, you can use our [online CSS compressor and optimizer](#) based on csstidy. If you want to create a linear or radial gradient as background or border, check our [CSS Gradient Generator](#).

Hey! You found this booklet interesting? Support Converting Colors with the new Membership Option!

The pro membership hides all ads, plus gives you double the colors in the color bucket, and more awesome pro features!

[Learn more, Memberships starting at \\$2.50/m!](#)

**Follow me
on Twitter!**

@ConvertingColor