

Converting Colors

Android(4294791024)

Have a look what the booklet for
Android(4294791024) contains.

Android(4294791024)	3
<i>Conversions</i>	4
<i>Details</i>	6
<i>Harmonies</i>	11
<i>Previews</i>	23
<i>Color Blindness Simulation</i>	26
<i>CSS Examples</i>	29

Color

Android(4294791024)

Conversions

Conversions Part 1

Format	Color
Hex	FD4F70
RGB	253, 79, 112
RGB Percent	99%, 31%, 44%
CMY	0.0078, 0.6902, 0.5608
CMYK	0.00, 0.69, 0.56, 0.01
HSL	349°, 98%, 65%
HSV	349°, 69%, 99%
XYZ	46.2286, 27.6445, 18.2286
YIQ	134.7880, 93.1110, 47.1510

Conversions

Conversions Part 2

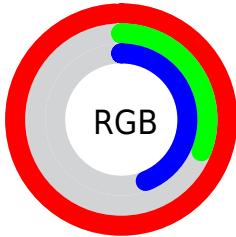
Format	Color
R_{YB}	253, 79, 112
Decimal	16600944
CIE _{Lab}	59.57, 67.50, 20.06
CIE _{LCh}	60, 70.414, 16.550
Yxy	27.6445, 0.5019, 0.3002
Android (android.graphics.Color)	4294791024 (0xFFFD4F70)
YUV	134.7880, -11.2345, 103.6719
Hunter-Lab	52.5780, 64.9326, 16.2489

Details

The Android color **4294791024** is a dark color, and the websafe version is hex **FF3366**. The color can be described as middle washed rose. A complement of this color would be **4283432412**, and the grayscale version is **4287072135**.

A 20% lighter version of the original color is **4294937251**, and **4290641985** is the 20% darker color. If you saturate the color by 10%, you get **4294784603**, and if you desaturate by 10%, it is **4294797445**.

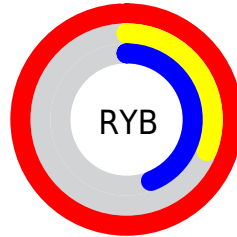
Distribution



Red (99%)

Green (31%)

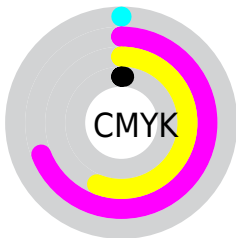
Blue (44%)



Red (99%)

Yellow (31%)

Blue (44%)

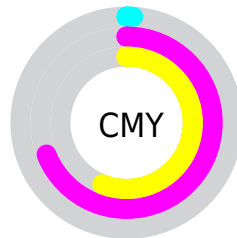


Cyan (0%)

Magenta (69%)

Yellow (56%)

Black (1%)



Cyan (1%)

Magenta (69%)

Yellow (56%)

Brightness & Saturation Gradients

These gradients show how the Android color 4294791024 changes by changing the brightness by 10 percent. The first figure shows a shift by +10% for each color and the second figure -10%.

Similar to the brightness gradients but the following saturation gradients show a change of the Android color 4294791024 by changing the saturation by 10% instead.

 4294791024

 4294791024

4294967295

 4292685400

 4294937251

 4290641985

 4294944702

 4288610347

 4294952154

 4286578711

 4294959863

 4284612609

 4282712067

 4280549377

 4278190080

 4294791024

 4294791024

■ 4294784603

■ 4294797445

■ 4294777927

■ 4294804121

■ 4294771506

■ 4294810542

■ 4294770736

■ 4294816962

■ 4294823639

■ 4294830059

4294836223

Harmonies

Analogous

The Analogous color harmony consists of three colors that are next to each other on the color wheel.



4293939886



4294791024



4293617462

Triad

The Triadic color harmony groups three colors that are evenly spaced from another and form a triangle on the color wheel.



4294791024



4282295345



4278231039

Complementary

The Complementary color scheme is a pair of colors which are on the opposite of each other on the color wheel.



4294791024



4283432412

Split Complementary

Split-complementary colors differ from the complementary color scheme. The scheme consists of three colors, the original color and two neighbors of the complement color.



4278233577



4294791024



4278233712

Square

The Square scheme is like the rectangle color scheme, but the four colors are evenly spaced on the color wheel.



4294791024



4287403776



4278234289



4283075583

Rectangle

The Rectangle color scheme consists of four colors that form a rectangle on the color wheel.



4294791024



4291983882



4278234289



4278232063

Sweetspot

The Sweet Spot groups the original color and five complimentary colors.



4294791024



4294953428



4292497405



4286603366



4278190080



4286611584

Same Dimension

The Same Dimension uses a secret algorithm to generate beautiful new colors.



4294791024



4294912851



4294804303



4286608245



4290707492



4282384396

Inverse Universe

The Inverse Universe completely reimagines the original color for something new.



4294791024



4294912851



4283419133



4286608245



4290707492



4282384396

Previews

White Background



This preview shows how the Android color 4294791024 looks on a white background.

Color Contrast Check

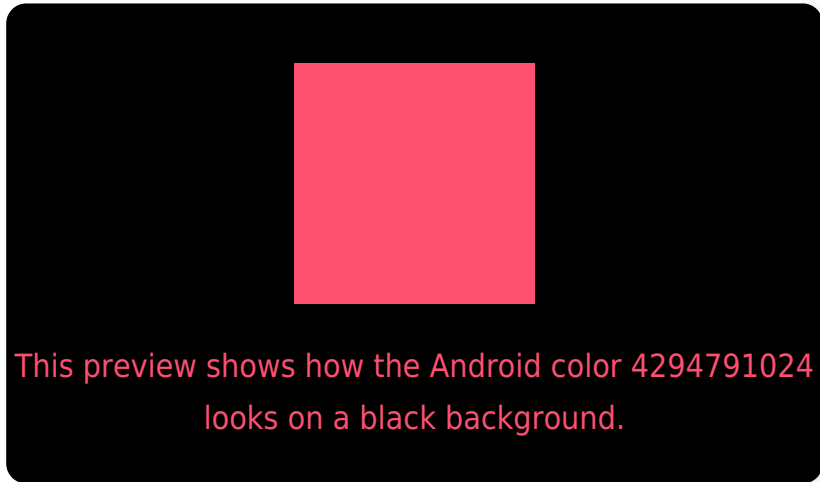
Large Text (above 18pt) WCAG AA ✓ Pass

Any Text WCAG AA × Fail

Large Text (above 18pt) WCAG AAA × Fail

Any Text WCAG AAA × Fail

Black Background



Color Contrast Check

Large Text (above 18pt) WCAG AA ✓ Pass

Any Text WCAG AA ✓ Pass

Large Text (above 18pt) WCAG AAA ✓ Pass

Any Text WCAG AAA × Fail

If you want to check with other color combinations, try the [Color Contrast Checker](#).

Android 4294791024 Background



This preview shows how black text looks on a background with the Android color 4294791024.



This preview shows how white text looks on a background with the Android color 4294791024.

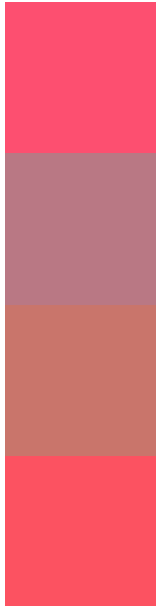
Color Blindness Simulation

Color vision deficiency is a very complex topic, and I could not describe the different causes any better than Wikipedia does, so if you want to learn more, you should check out their [article about color blindness](#).

Dichromacy



Trichromacy



Original Color
4294791024

Protanomaly
4290345092

Deuteranomaly
4291392875

Tritanomaly
4294726241

Monochromacy



Original Color
4294791024

Achromatopsia
4287072135

Achromatomaly
4289885055

CSS Examples

Text

The CSS property to change the color of the text to Android 4294791024 is called "color". The color property can be set on classes, ids or directly on the HTML element.

This example shows how text in the color `rgb(253, 79, 112)` looks like.

```
.text, #text, p{  
    color:rgb(253, 79, 112)  
}
```

If you want to add a text shadow in that color use the text-shadow property, you can generate a text shadow directly with our [CSS Text Shadow Generator](#).

Here you see how black text with a 4 pixel rgb(253, 79, 112) colored shadow looks like.

```
.shadow{ text-shadow: 4px 4px 2px rgb(253, 79, 112) }
```

Border

The CSS property to change the border of an element to Android 4294791024 is called "border". The border property can be set on classes, ids or directly on the HTML element.

This example shows the color as border, it can be applied via the CSS property "border" or "border-color".

```
.border, #border, table{ border:4px solid rgb(253, 79, 112) }
```

If only the border color should be changed use the property `border-color`.

```
.border{ border-color:rgb(253, 79, 112) }
```

If you want to add a box shadow in that color use:

Here you see how a box with a 4 pixel `rgb(253, 79, 112)` colored shadow looks like.

```
.boxshadow{ -moz-box-shadow:4px 4px 4px  
4px rgb(253, 79, 112); -webkit-box-  
shadow:4px 4px 4px 4px rgb(253, 79, 112);  
box-shadow:4px 4px 4px 4px rgb(253, 79,  
112) }
```

Background

The CSS property to change the background color of an element to Android 4294791024 is called "background". The background property can be set on classes, ids or directly on the HTML element.

```
.background, #background, body{  
background: rgb(253, 79, 112) }
```

If only the background color should be changed can be used:

```
.background{ background-color: rgb(253, 79,  
112) }
```

This example shows the color as background, it is applied via the CSS property "background".

To optimize and compress your CSS code, you can use our [online CSS compressor and optimizer](#) based on csstidy. If you want to create a linear or radial gradient as background or border, check our [CSS Gradient Generator](#).

Hey! You found this booklet interesting? Support Converting Colors with the new Membership Option!

The pro membership hides all ads, plus gives you double the colors in the color bucket, and more awesome pro features!

[Learn more, Memberships starting at \\$2.50/m!](#)

**Follow me
on Twitter!**

@ConvertingColor