

Converting Colors

Android(4294798210)

Have a look what the booklet for
Android(4294798210) contains.

Android(4294798210)	3
<i>Conversions</i>	4
<i>Details</i>	6
<i>Harmonies</i>	11
<i>Previews</i>	23
<i>Color Blindness Simulation</i>	26
<i>CSS Examples</i>	29

Color

Android(4294798210)

Conversions

Conversions Part 1

Format	Color
Hex	FD6B82
RGB	253, 107, 130
RGB Percent	99%, 42%, 51%
CMY	0.0078, 0.5804, 0.4902
CMYK	0.00, 0.58, 0.49, 0.01
HSL	351°, 97%, 71%
HSV	351°, 58%, 99%
XYZ	49.7950, 33.0097, 24.8661
YIQ	153.2760, 79.6330, 38.1050

Conversions

Conversions Part 2

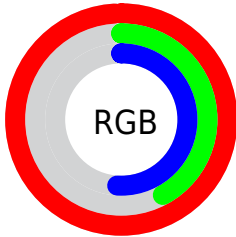
Format	Color
R _Y B	253, 107, 130
Decimal	16608130
CIE Lab	64.17, 57.52, 15.97
CIE LCh	64, 59.696, 15.520
Yxy	33.0097, 0.4625, 0.3066
Android (android.graphics.Color)	4294798210 (0xFFFD6B82)
YUV	153.2760, -11.4751, 87.4579
Hunter-Lab	57.4541, 54.1597, 14.5572

Details

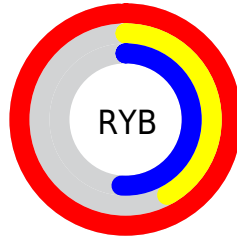
The Android color **4294798210** is a light color, and the websafe version is hex **FF6699**. A complement of this color would be **4285267430**, and the grayscale version is **4288256409**.

A 20% lighter version of the original color is **4294943671**, and **4290720081** is the 20% darker color. If you saturate the color by 10%, you get **4294791789**, and if you desaturate by 10%, it is **4294804631**.

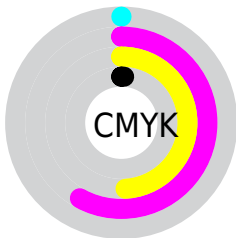
Distribution



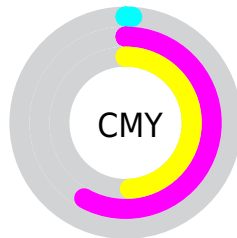
- Red (99%)
- Green (42%)
- Blue (51%)



- Red (99%)
- Yellow (42%)
- Blue (51%)



- Cyan (0%)
- Magenta (58%)
- Yellow (49%)
- Black (1%)



- Cyan (1%)
- Magenta (58%)
- Yellow (49%)

Brightness & Saturation Gradients

These gradients show how the Android color 4294798210 changes by changing the brightness by 10 percent. The first figure shows a shift by +10% for each color and the second figure -10%.

Similar to the brightness gradients but the following saturation gradients show a change of the Android color 4294798210 by changing the saturation by 10% instead.

 4294798210

 4294798210

4294967295

 4292759401

 4294943671

 4290720081

 4294951122

 4288743482

 4294958575

 4286775333

 4294966015

 4284874769

 4282974209

 4281073665

 4278190080

 4294798210

 4294798210

■ 4294791789

■ 4294804631

■ 4294785111

■ 4294811309

■ 4294778690

■ 4294817730

■ 4294772269

■ 4294824151

■ 4294770728

■ 4294830829

4294836223

Harmonies

Analogous

The Analogous color harmony consists of three colors that are next to each other on the color wheel.



4293881528



4294798210



4293884497

Triad

The Triadic color harmony groups three colors that are evenly spaced from another and form a triangle on the color wheel.



4294798210



4284525901



4278233599

Complementary

The Complementary color scheme is a pair of colors which are on the opposite of each other on the color wheel.



4294798210



4285267430

Split Complementary

Split-complementary colors differ from the complementary color scheme. The scheme consists of three colors, the original color and two neighbors of the complement color.



4278235878



4294798210



4278236287

Square

The Square scheme is like the rectangle color scheme, but the four colors are evenly spaced on the color wheel.



4294798210



4288520490



4278236598



4285241599

Rectangle

The Rectangle color scheme consists of four colors that form a rectangle on the color wheel.



4294798210



4292512056



4278236598



4278234620

Sweetspot

The Sweet Spot groups the original color and five complimentary colors.



4294798210



4294956250



4293225469



4286604906



4278190080



4286611584

Same Dimension

The Same Dimension uses a secret algorithm to generate beautiful new colors.



4294798210



4294922091



4294810731



4286608245



4290707486



4282384394

Inverse Universe

The Inverse Universe completely reimagines the original color for something new.



4294798210



4294922091



4285254909



4286608245



4290707486



4282384394

Previews

White Background



This preview shows how the Android color 4294798210 looks on a white background.

Color Contrast Check

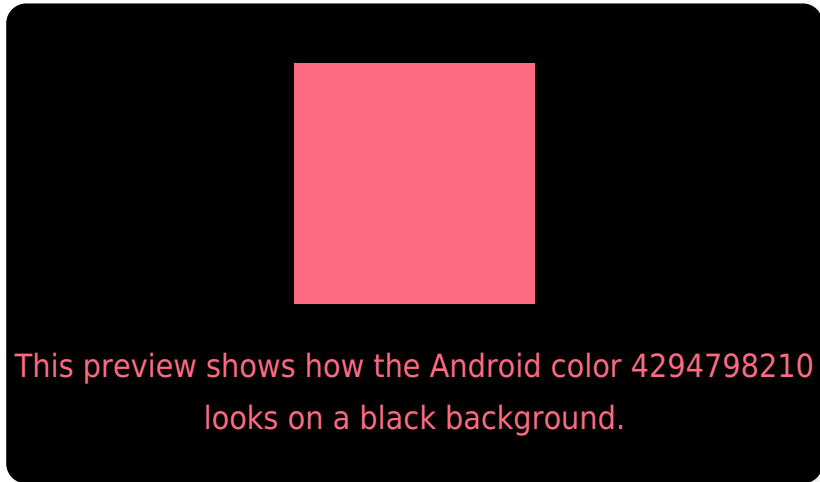
Large Text (above 18pt) WCAG AA × Fail

Any Text WCAG AA × Fail

Large Text (above 18pt) WCAG AAA × Fail

Any Text WCAG AAA × Fail

Black Background



Color Contrast Check

Large Text (above 18pt) WCAG AA ✓ Pass

Any Text WCAG AA ✓ Pass

Large Text (above 18pt) WCAG AAA ✓ Pass

Any Text WCAG AAA ✓ Pass

If you want to check with other color combinations, try the [Color Contrast Checker](#).

Android 4294798210 Background



This preview shows how black text looks on a background with the Android color 4294798210.



This preview shows how white text looks on a background with the Android color 4294798210.

Color Blindness Simulation

Color vision deficiency is a very complex topic, and I could not describe the different causes any better than Wikipedia does, so if you want to learn more, you should check out their [article about color blindness](#).


Dichromacy



Original Color
4294798210

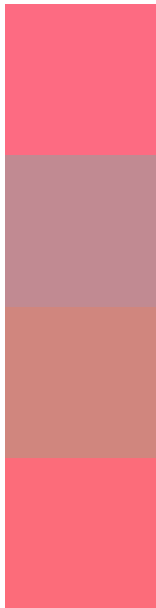
Protanopia
4288650139

Deuteranopia
4290156155



Tritanopia
4294733173

Trichromacy



Original Color
4294798210

Protanomaly
4290874002

Deuteranomaly
4291855998

Tritanomaly
4294732922

Monochromacy



Original Color
4294798210

Achromatopsia
4288256409

Achromatomaly
4290611345

CSS Examples

Text

The CSS property to change the color of the text to Android 4294798210 is called "color". The color property can be set on classes, ids or directly on the HTML element.

This example shows how text in the color `rgb(253, 107, 130)` looks like.

```
.text, #text, p{  
    color:rgb(253, 107, 130)  
}
```

If you want to add a text shadow in that color use the text-shadow property, you can generate a text shadow directly with our [CSS Text Shadow Generator](#).

Here you see how black text with a 4 pixel rgb(253, 107, 130) colored shadow looks like.

```
.shadow{ text-shadow: 4px 4px 2px rgb(253, 107, 130) }
```

Border

The CSS property to change the border of an element to Android 4294798210 is called "border". The border property can be set on classes, ids or directly on the HTML element.

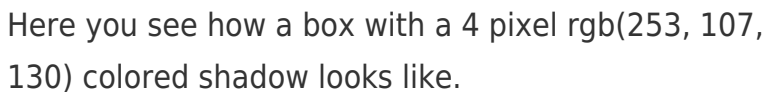
This example shows the color as border, it can be applied via the CSS property "border" or "border-color".

```
.border, #border, table{ border:4px solid rgb(253, 107, 130) }
```

If only the border color should be changed use the property `border-color`.

```
.border{ border-color:rgb(253, 107, 130) }
```

If you want to add a box shadow in that color use:



Here you see how a box with a 4 pixel `rgb(253, 107, 130)` colored shadow looks like.

```
.boxshadow{ -moz-box-shadow:4px 4px 4px 4px rgb(253, 107, 130); -webkit-box-shadow:4px 4px 4px 4px rgb(253, 107, 130); box-shadow:4px 4px 4px 4px rgb(253, 107, 130) }
```

Background

The CSS property to change the background color of an element to Android 4294798210 is called "background". The background property can be set on classes, ids or directly on the HTML element.

```
.background, #background, body{  
background: rgb(253, 107, 130) }
```

If only the background color should be changed can be used:

```
.background{ background-color: rgb(253,  
107, 130) }
```

This example shows the color as background, it is applied via the CSS property "background".

To optimize and compress your CSS code, you can use our [online CSS compressor and optimizer](#) based on csstidy. If you want to create a linear or radial gradient as background or border, check our [CSS Gradient Generator](#).

Hey! You found this booklet interesting? Support Converting Colors with the new Membership Option!

The pro membership hides all ads, plus gives you double the colors in the color bucket, and more awesome pro features!

[Learn more, Memberships starting at \\$2.50/m!](#)

**Follow me
on Twitter!**

@ConvertingColor