

Converting Colors

Android(4294805913)

Have a look what the booklet for
Android(4294805913) contains.

Android(4294805913)	3
<i>Conversions</i>	4
<i>Details</i>	6
<i>Harmonies</i>	11
<i>Previews</i>	23
<i>Color Blindness Simulation</i>	26
<i>CSS Examples</i>	29

Color

Android(4294805913)

Conversions

Conversions Part 1

Format	Color
Hex	FD8999
RGB	253, 137, 153
RGB Percent	99%, 54%, 60%
CMY	0.0078, 0.4627, 0.4000
CMYK	0.00, 0.46, 0.40, 0.01
HSL	352°, 97%, 76%
HSV	352°, 46%, 99%
XYZ	55.2034, 41.0739, 35.1555
YIQ	173.5080, 64.0000, 29.5680

Conversions

Conversions Part 2

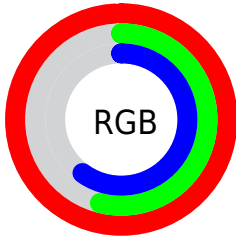
Format	Color
R _Y B	253, 137, 153
Decimal	16615833
CIE _{Lab}	70.23, 45.50, 11.46
CIE _{LCh}	70, 46.920, 14.140
Yxy	41.0739, 0.4200, 0.3125
Android (android.graphics.Color)	4294805913 (0xFFFD8999)
YUV	173.5080, -10.1104, 69.7145
Hunter-Lab	64.0889, 41.5967, 12.3391

Details

The Android color `4294805913` is a light color, and the websafe version is hex `FF9999`. A complement of this color would be `4287233517`, and the grayscale version is `4289638062`.

A 20% lighter version of the original color is `4294951119`, and `4290860134` is the 20% darker color. If you saturate the color by 10%, you get `4294799491`, and if you desaturate by 10%, it is `4294812335`.

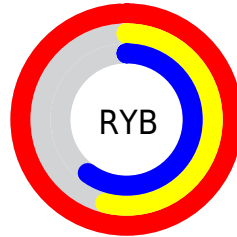
Distribution



Red (99%)

Green (54%)

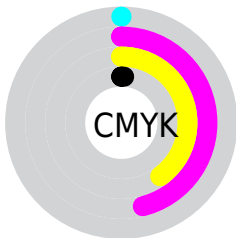
Blue (60%)



Red (99%)

Yellow (54%)

Blue (60%)

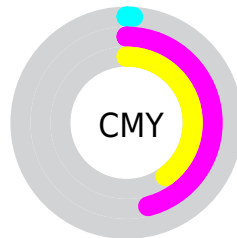


Cyan (0%)

Magenta (46%)

Yellow (40%)

Black (1%)



Cyan (1%)

Magenta (46%)

Yellow (40%)

Brightness & Saturation Gradients

These gradients show how the Android color 4294805913 changes by changing the brightness by 10 percent. The first figure shows a shift by +10% for each color and the second figure -10%.

Similar to the brightness gradients but the following saturation gradients show a change of the Android color 4294805913 by changing the saturation by 10% instead.

 4294805913

 4294805913

4294967295

 4292832895

 4294951119

 4290860134

 4294958571

 4288952654

 4294966015

 4287044920

 4285202466

 4283367437

 4281729026

 4278779904

 4278190080

 4294805913

 4294805913

 4294799491

 4294812335

 4294792813

 4294819013

 4294786392

 4294825434

 4294779970

 4294831856

 4294773292

4294836223

 4294770723

Harmonies

Analogous

The Analogous color harmony consists of three colors that are next to each other on the color wheel.



4293889220



4294805913



4294218354

Triad

The Triadic color harmony groups three colors that are evenly spaced from another and form a triangle on the color wheel.



4294805913



4286823021



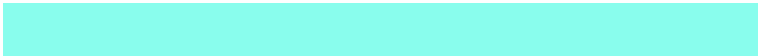
4280203261

Complementary

The Complementary color scheme is a pair of colors which are on the opposite of each other on the color wheel.



4294805913



4287233517

Split Complementary

Split-complementary colors differ from the complementary color scheme. The scheme consists of three colors, the original color and two neighbors of the complement color.



4278239206



4294805913



4282630291

Square

The Square scheme is like the rectangle color scheme, but the four colors are evenly spaced on the color wheel.



4294805913



4289900630



4278239935



4287343102

Rectangle

The Rectangle color scheme consists of four colors that form a rectangle on the color wheel.



4294805913



4293172319



4278239935



4278237944

Sweetspot

The Sweet Spot groups the original color and five complimentary colors.



4294805913



4294958048



4293691901



4286605933



4278190080



4286611584

Same Dimension

The Same Dimension uses a secret algorithm to generate beautiful new colors.



4294805913



4294931334



4294816393



4286608245



4290707482



4282384393

Inverse Universe

The Inverse Universe completely reimagines the original color for something new.



4294805913



4294931334



4287223037



4286608245



4290707482



4282384393

Previews

White Background



This preview shows how the Android color 4294805913 looks on a white background.

Color Contrast Check

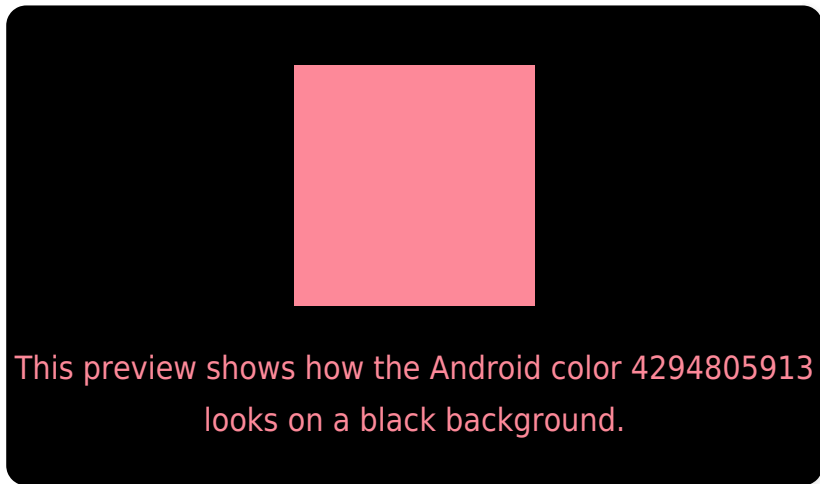
Large Text (above 18pt) WCAG AA × Fail

Any Text WCAG AA × Fail

Large Text (above 18pt) WCAG AAA × Fail

Any Text WCAG AAA × Fail

Black Background



Color Contrast Check

Large Text (above 18pt) WCAG AA ✓ Pass

Any Text WCAG AA ✓ Pass

Large Text (above 18pt) WCAG AAA ✓ Pass

Any Text WCAG AAA ✓ Pass

If you want to check with other color combinations, try the [Color Contrast Checker](#).

Android 4294805913 Background



This preview shows how black text looks on a background with the Android color 4294805913.

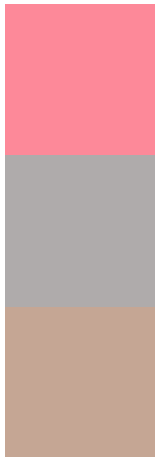


This preview shows how white text looks on a background with the Android color 4294805913.

Color Blindness Simulation

Color vision deficiency is a very complex topic, and I could not describe the different causes any better than Wikipedia does, so if you want to learn more, you should check out their [article about color blindness](#).

Dichromacy

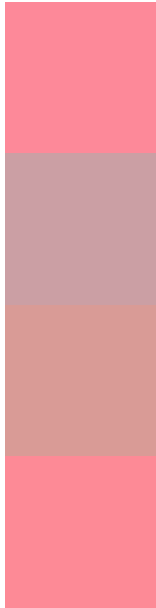


Original Color
4294805913

Protanopia
4289702827

Deuteranopia
4291143316

Trichromacy



Original Color
4294805913

Protanomaly
4291534756

Deuteranomaly
4292451222

Tritanomaly
4294806166

Monochromacy



Original Color
4294805913

Achromatopsia
4289638062

Achromatomaly
4291535270

CSS Examples

Text

The CSS property to change the color of the text to Android 4294805913 is called "color". The color property can be set on classes, ids or directly on the HTML element.

This example shows how text in the color `rgb(253, 137, 153)` looks like.

```
.text, #text, p{  
    color:rgb(253, 137, 153)  
}
```

If you want to add a text shadow in that color use the text-shadow property, you can generate a text shadow directly with our [CSS Text Shadow Generator](#).

Here you see how black text with a 4 pixel rgb(253, 137, 153) colored shadow looks like.

```
.shadow{ text-shadow: 4px 4px 2px rgb(253, 137, 153) }
```

Border

The CSS property to change the border of an element to Android 4294805913 is called "border". The border property can be set on classes, ids or directly on the HTML element.

This example shows the color as border, it can be applied via the CSS property "border" or "border-color".

```
.border, #border, table{ border:4px solid rgb(253, 137, 153) }
```

If only the border color should be changed use the property `border-color`.

```
.border{ border-color:rgb(253, 137, 153) }
```

If you want to add a box shadow in that color use:

Here you see how a box with a 4 pixel `rgb(253, 137, 153)` colored shadow looks like.

```
.boxshadow{ -moz-box-shadow:4px 4px 4px  
4px rgb(253, 137, 153); -webkit-box-  
shadow:4px 4px 4px 4px rgb(253, 137, 153);  
box-shadow:4px 4px 4px 4px rgb(253, 137,  
153) }
```

Background

The CSS property to change the background color of an element to Android 4294805913 is called "background". The background property can be set on classes, ids or directly on the HTML element.

```
.background, #background, body{  
background: rgb(253, 137, 153) }
```

If only the background color should be changed can be used:

```
.background{ background-color: rgb(253,  
137, 153) }
```

This example shows the color as background, it is applied via the CSS property "background".

To optimize and compress your CSS code, you can use our [online CSS compressor and optimizer](#) based on csstidy. If you want to create a linear or radial gradient as background or border, check our [CSS Gradient Generator](#).

Hey! You found this booklet interesting? Support Converting Colors with the new Membership Option!

The pro membership hides all ads, plus gives you double the colors in the color bucket, and more awesome pro features!

[Learn more, Memberships starting at \\$2.50/m!](#)

**Follow me
on Twitter!**

@ConvertingColor