

Converting Colors

Android(4294817212)

Have a look what the booklet for
Android(4294817212) contains.

Android(4294817212)	3
<i>Conversions</i>	4
<i>Details</i>	6
<i>Harmonies</i>	11
<i>Previews</i>	23
<i>Color Blindness Simulation</i>	26
<i>CSS Examples</i>	29

Color

Android(4294817212)

Conversions

Conversions Part 1

Format	Color
Hex	FDB5BC
RGB	253, 181, 188
RGB Percent	99%, 71%, 74%
CMY	0.0078, 0.2902, 0.2627
CMYK	0.00, 0.28, 0.26, 0.01
HSL	354°, 95%, 85%
HSV	354°, 28%, 99%
XYZ	66.1090, 57.5612, 55.2031
YIQ	203.3260, 40.6650, 17.4410

Conversions

Conversions Part 2

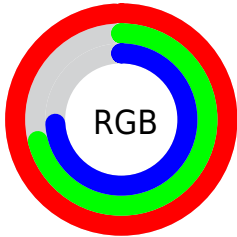
Format	Color
R _Y B	253, 181, 188
Decimal	16627132
CIE Lab	80.49, 27.08, 6.89
CIE LCh	80, 27.947, 14.278
Yxy	57.5612, 0.3696, 0.3218
Android (android.graphics.Color)	4294817212 (0xFFFD5BC)
YUV	203.3260, -7.5557, 43.5641
Hunter-Lab	75.8691, 22.7660, 9.9684

Details

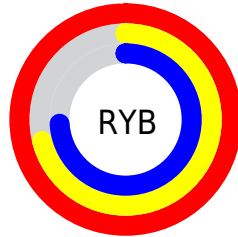
The Android color `4294817212` is a light color, and the websafe version is hex `FFCCCC`. A complement of this color would be `4290117110`, and the grayscale version is `4291546059`.

A 20% lighter version of the original color is `4294962676`, and `4291002503` is the 20% darker color. If you saturate the color by 10%, you get `4294810789`, and if you desaturate by 10%, it is `4294823635`.

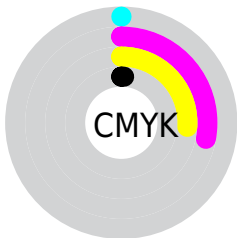
Distribution



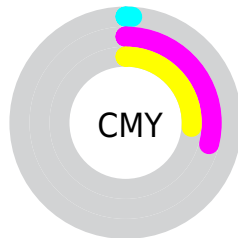
- Red (99%)
- Green (71%)
- Blue (74%)



- Red (99%)
- Yellow (71%)
- Blue (74%)



- Cyan (0%)
- Magenta (28%)
- Yellow (26%)
- Black (1%)



- Cyan (1%)
- Magenta (29%)
- Yellow (26%)

Brightness & Saturation Gradients

These gradients show how the Android color 4294817212 changes by changing the brightness by 10 percent. The first figure shows a shift by +10% for each color and the second figure -10%.

Similar to the brightness gradients but the following saturation gradients show a change of the Android color 4294817212 by changing the saturation by 10% instead.

 4294817212

 4294817212

4294967295

 4292909729

 4294962676

 4291002503

 4289160814

 4287384917

 4285609534

 4283899432

 4282189332

 4280877057

 4278190080

 4294817212

 4294817212

 4294810789

 4294823635

 4294804110

 4294830314

 4294797687

4294836223

 4294791265

 4294784842

 4294778163

 4294771740

 4294770713

Harmonies

Analogous

The Analogous color harmony consists of three colors that are next to each other on the color wheel.



4294162135



4294817212



4294490532

Triad

The Triadic color harmony groups three colors that are evenly spaced from another and form a triangle on the color wheel.



4294817212



4289843618



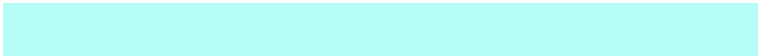
4288073465

Complementary

The Complementary color scheme is a pair of colors which are on the opposite of each other on the color wheel.



4294817212



4290117110

Split Complementary

Split-complementary colors differ from the complementary color scheme. The scheme consists of three colors, the original color and two neighbors of the complement color.



4286502123



4294817212



4287944121

Square

The Square scheme is like the rectangle color scheme, but the four colors are evenly spaced on the color wheel.



4294817212



4291742357



4286568148



4290365178

Rectangle

The Rectangle color scheme consists of four colors that form a rectangle on the color wheel.



4294817212



4293836441



4286568148



4287418870

Sweetspot

The Sweet Spot groups the original color and five complimentary colors.



4294817212



4294961386



4294358525



4286607731



4278190080



4286611584

Same Dimension

The Same Dimension uses a secret algorithm to generate beautiful new colors.



4294817212



4294944945



4294824629



4286608244



4290707475



4282384390

Inverse Universe

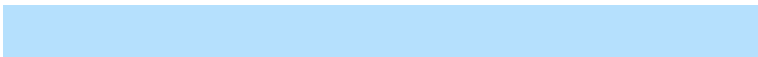
The Inverse Universe completely reimagines the original color for something new.



4294817212



4294944945



4290109693



4286608244



4290707475



4282384390

Previews

White Background



This preview shows how the Android color 4294817212 looks on a white background.

Color Contrast Check

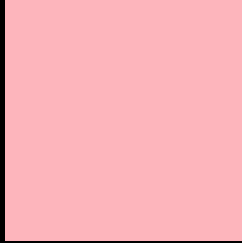
Large Text (above 18pt) WCAG AA × Fail

Any Text WCAG AA × Fail

Large Text (above 18pt) WCAG AAA × Fail

Any Text WCAG AAA × Fail

Black Background



This preview shows how the Android color 4294817212 looks on a black background.

Color Contrast Check

Large Text (above 18pt) WCAG AA ✓ Pass

Any Text WCAG AA ✓ Pass

Large Text (above 18pt) WCAG AAA ✓ Pass

Any Text WCAG AAA ✓ Pass

If you want to check with other color combinations, try the [Color Contrast Checker](#).

Android 4294817212 Background



This preview shows how black text looks on a background with the Android color 4294817212.



This preview shows how white text looks on a background with the Android color 4294817212.

Color Blindness Simulation

Color vision deficiency is a very complex topic, and I could not describe the different causes any better than Wikipedia does, so if you want to learn more, you should check out their [article about color blindness](#).


Dichromacy



Original Color
4294817212

Protanopia
4291610566

Deuteranopia
4292985274



Tritanopia
4294882498

Trichromacy



Original Color

4294817212



Protanomaly

4292788418



Deuteranomaly

4293639611



Tritanomaly

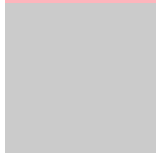
4294882496

Monochromacy



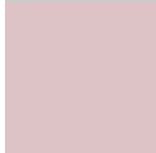
Original Color

4294817212



Achromatopsia

4291546059



Achromatomaly

4292723654

CSS Examples

Text

The CSS property to change the color of the text to Android 4294817212 is called "color". The color property can be set on classes, ids or directly on the HTML element.

This example shows how text in the color `rgb(253, 181, 188)` looks like.

```
.text, #text, p{  
    color:rgb(253, 181, 188)  
}
```

If you want to add a text shadow in that color use the text-shadow property, you can generate a text shadow directly with our [CSS Text Shadow Generator](#).

Here you see how black text with a 4 pixel rgb(253, 181, 188) colored shadow looks like.

```
.shadow{ text-shadow: 4px 4px 2px rgb(253, 181, 188) }
```

Border

The CSS property to change the border of an element to Android 4294817212 is called "border". The border property can be set on classes, ids or directly on the HTML element.

This example shows the color as border, it can be applied via the CSS property "border" or "border-color".

```
.border, #border, table{ border:4px solid rgb(253, 181, 188) }
```

If only the border color should be changed use the property `border-color`.

```
.border{ border-color:rgb(253, 181, 188) }
```

If you want to add a box shadow in that color use:

Here you see how a box with a 4 pixel `rgb(253, 181, 188)` colored shadow looks like.

```
.boxshadow{ -moz-box-shadow:4px 4px 4px  
4px rgb(253, 181, 188); -webkit-box-  
shadow:4px 4px 4px 4px rgb(253, 181, 188);  
box-shadow:4px 4px 4px 4px rgb(253, 181,  
188) }
```

Background

The CSS property to change the background color of an element to Android 4294817212 is called "background". The background property can be set on classes, ids or directly on the HTML element.

```
.background, #background, body{  
background: rgb(253, 181, 188) }
```

If only the background color should be changed can be used:

```
.background{ background-color: rgb(253,  
181, 188) }
```

This example shows the color as background, it is applied via the CSS property "background".

To optimize and compress your CSS code, you can use our [online CSS compressor and optimizer](#) based on csstidy. If you want to create a linear or radial gradient as background or border, check our [CSS Gradient Generator](#).

Hey! You found this booklet interesting? Support Converting Colors with the new Membership Option!

The pro membership hides all ads, plus gives you double the colors in the color bucket, and more awesome pro features!

[Learn more, Memberships starting at \\$2.50/m!](#)

**Follow me
on Twitter!**

@ConvertingColor