

# Converting Colors

Android(4294847858)

Have a look what the booklet for  
Android(4294847858) contains.

<b>Android(4294847858)</b> .....	3
<i><b>Conversions</b></i> .....	4
<i><b>Details</b></i> .....	6
<i><b>Harmonies</b></i> .....	11
<i><b>Previews</b></i> .....	23
<i><b>Color Blindness Simulation</b></i> .....	26
<i><b>CSS Examples</b></i> .....	29

**Color**

**Android(4294847858)**

# Conversions

## Conversions Part 1

Format	Color
Hex	FE2D72
RGB	254, 45, 114
RGB Percent	100%, 18%, 45%
CMY	0.0039, 0.8235, 0.5529
CMYK	0.00, 0.82, 0.55, 0.00
HSL	340°, 99%, 59%
HSV	340°, 82%, 100%
XYZ	44.8487, 24.1625, 18.2196
YIQ	115.3570, 102.4150, 65.7670

# Conversions

## Conversions Part 2

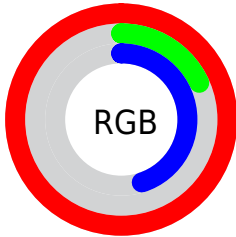
<b>Format</b>	<b>Color</b>
<b>R<sub>YB</sub></b>	254, 45, 114
Decimal	16657778
CIE <sub>Lab</sub>	56.25, 77.84, 14.36
CIE <sub>LCh</sub>	56, 79.151, 10.452
Yxy	24.1625, 0.5141, 0.2770
Android (android.graphics.Color)	4294847858 (0xFFFE2D72)
YUV	115.3570, -0.6690, 121.5899
Hunter-Lab	49.1554, 76.8391, 12.4327

# Details

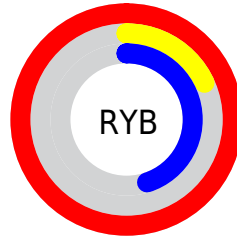
The Android color **4294847858** is a dark color, and the websafe version is hex **FF0066**. The color can be described as middle washed rose. A complement of this color would be **4281204409**, and the grayscale version is **4285756275**.

A 20% lighter version of the original color is **4294931109**, and **4290641987** is the 20% darker color. If you saturate the color by 10%, you get **4294841441**, and if you desaturate by 10%, it is **4294854275**.

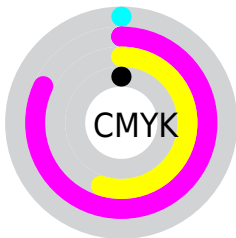
# Distribution



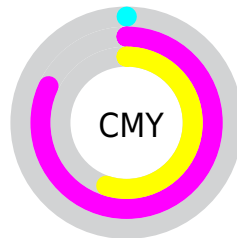
- Red (100%)
- Green (18%)
- Blue (45%)



- Red (100%)
- Yellow (18%)
- Blue (45%)



- Cyan (0%)
- Magenta (82%)
- Yellow (55%)
- Black (0%)



- Cyan (0%)
- Magenta (82%)
- Yellow (55%)

# Brightness & Saturation Gradients

These gradients show how the Android color 4294847858 changes by changing the brightness by 10 percent. The first figure shows a shift by +10% for each color and the second figure -10%.

Similar to the brightness gradients but the following saturation gradients show a change of the Android color 4294847858 by changing the saturation by 10% instead.



 4294847858

 4294847858

4294967295

 4292739162

 4294931109

 4290641987

 4294939073

 4288610349

 4294946780

 4286513178

 4294954489

 4284547075

 4294962175

 4282515459

 4280287233

 4278190080

 4294847858

 4294847858

 4294841441

 4294854275

 4294836308

 4294860948

 4294867365

 4294874038

 4294880455

 4294886872

 4294893545

 4294899962

4294901759

# Harmonies

## Analogous

The Analogous color harmony consists of three colors that are next to each other on the color wheel.



4293476279



4294847858



4293873455

# Triad

The Triadic color harmony groups three colors that are evenly spaced from another and form a triangle on the color wheel.



4294847858



4282096128



4278230015

# Complementary

The Complementary color scheme is a pair of colors which are on the opposite of each other on the color wheel.



4294847858



4281204409

# Split Complementary

Split-complementary colors differ from the complementary color scheme. The scheme consists of three colors, the original color and two neighbors of the complement color.



4278232031



4294847858



4278231638

# Square

The Square scheme is like the rectangle color scheme, but the four colors are evenly spaced on the color wheel.



4294847858



4287466496



4278232478



4278225151

# Rectangle

The Rectangle color scheme consists of four colors that form a rectangle on the color wheel.



4294847858



4292306944



4278232478



4278231039



# Sweetspot

The Sweet Spot groups the original color and five complimentary colors.



4294847858



4294950868



4290260478



4286601574



4278190080



4286611584



# Same Dimension

The Same Dimension uses a secret algorithm to generate beautiful new colors.



4294847858



4294902614



4294856749



4286608247



4290707519



4282384405



# Inverse Universe

The Inverse Universe completely reimagines the original color for something new.



4294847858



4294902614



4281195518



4286608247



4290707519



4282384405



# Previews

## White Background



This preview shows how the Android color 4294847858 looks on a white background.

## Color Contrast Check

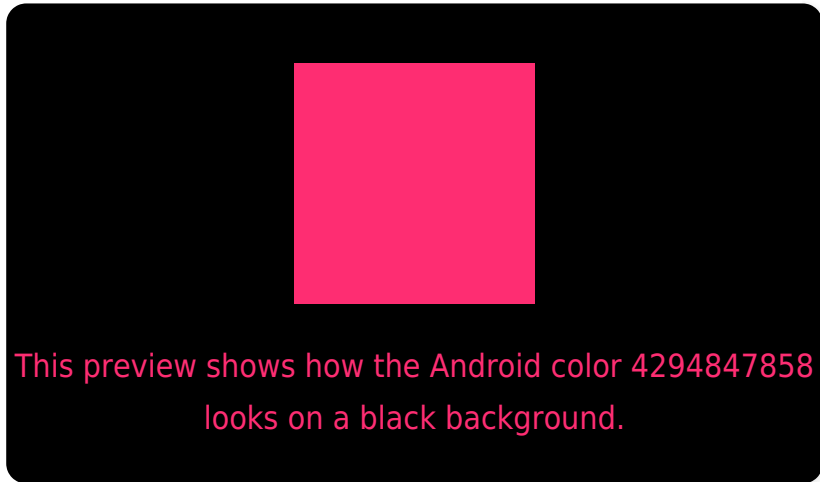
Large Text (above 18pt) WCAG AA ✓ Pass

Any Text WCAG AA ✗ Fail

Large Text (above 18pt) WCAG AAA ✗ Fail

Any Text WCAG AAA ✗ Fail

# Black Background



## Color Contrast Check

Large Text (above 18pt) WCAG AA ✓ Pass

Any Text WCAG AA ✓ Pass

Large Text (above 18pt) WCAG AAA ✓ Pass

Any Text WCAG AAA × Fail

If you want to check with other color combinations, try the [Color Contrast Checker](#).



# Android 4294847858 Background



This preview shows how black text looks on a background with the Android color 4294847858.



This preview shows how white text looks on a background with the Android color 4294847858.

# Color Blindness Simulation

Color vision deficiency is a very complex topic, and I could not describe the different causes any better than Wikipedia does, so if you want to learn more, you should check out their [article about color blindness](#).

## Dichromacy



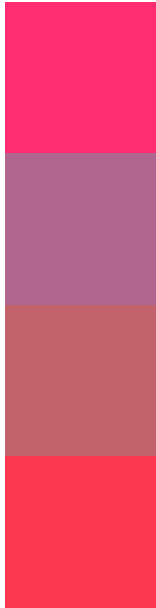
**Original Color**  
4294847858

**Protanopia**  
4286809758

**Deuteranopia**  
4288643688



# Trichromacy



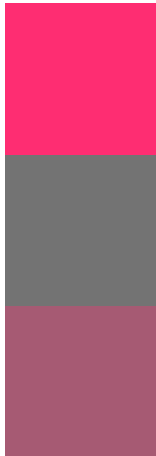
**Original Color**  
4294847858

**Protanomaly**  
4289750670

**Deuteranomaly**  
4290929516

**Tritanomaly**  
4294784848

# Monochromacy



**Original Color**  
4294847858

**Achromatopsia**  
4285756275

**Achromatomaly**  
4289092211

# CSS Examples

## Text

The CSS property to change the color of the text to Android 4294847858 is called "color". The color property can be set on classes, ids or directly on the HTML element.

This example shows how text in the color `rgb(254, 45, 114)` looks like.

```
.text, #text, p{  
    color:rgb(254, 45, 114)  
}
```

If you want to add a text shadow in that color use the text-shadow property, you can generate a text shadow directly with our [CSS Text Shadow Generator](#).

Here you see how black text with a 4 pixel rgb(254, 45, 114) colored shadow looks like.

```
.shadow{ text-shadow: 4px 4px 2px rgb(254, 45, 114) }
```

## Border

The CSS property to change the border of an element to Android 4294847858 is called "border". The border property can be set on classes, ids or directly on the HTML element.

This example shows the color as border, it can be applied via the CSS property "border" or "border-color".

```
.border, #border, table{ border:4px solid rgb(254, 45, 114) }
```

If only the border color should be changed use the property `border-color`.

```
.border{ border-color:rgb(254, 45, 114) }
```

If you want to add a box shadow in that color use:

Here you see how a box with a 4 pixel `rgb(254, 45, 114)` colored shadow looks like.

```
.boxshadow{ -moz-box-shadow:4px 4px 4px  
4px rgb(254, 45, 114); -webkit-box-  
shadow:4px 4px 4px 4px rgb(254, 45, 114);  
box-shadow:4px 4px 4px 4px rgb(254, 45,  
114) }
```

# Background

The CSS property to change the background color of an element to Android 4294847858 is called "background". The background property can be set on classes, ids or directly on the HTML element.

```
.background, #background, body{  
background: rgb(254, 45, 114) }
```

If only the background color should be changed can be used:

```
.background{ background-color: rgb(254, 45,  
114) }
```

This example shows the color as background, it is applied via the CSS property "background".

To optimize and compress your CSS code, you can use our [online CSS compressor and optimizer](#) based on csstidy. If you want to create a linear or radial gradient as background or border, check our [CSS Gradient Generator](#).



Hey! You found this booklet interesting? Support Converting Colors with the new Membership Option!

The pro membership hides all ads, plus gives you double the colors in the color bucket, and more awesome pro features!

**[Learn more, Memberships starting at \\$2.50/m!](#)**

**Follow me  
on Twitter!**

@ConvertingColor