

Converting Colors

Android(4294862743)

Have a look what the booklet for
Android(4294862743) contains.

Android(4294862743)	3
<i>Conversions</i>	4
<i>Details</i>	6
<i>Harmonies</i>	11
<i>Previews</i>	23
<i>Color Blindness Simulation</i>	26
<i>CSS Examples</i>	29

Color

Android(4294862743)

Conversions

Conversions Part 1

Format	Color
Hex	FE6797
RGB	254, 103, 151
RGB Percent	100%, 40%, 59%
CMY	0.0039, 0.5961, 0.4078
CMYK	0.00, 0.59, 0.41, 0.00
HSL	341°, 99%, 70%
HSV	341°, 59%, 100%
XYZ	51.3092, 33.0057, 32.9446
YIQ	153.6210, 74.5880, 46.9400

Conversions

Conversions Part 2

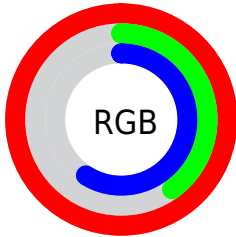
Format	Color
R_{YB}	254, 103, 151
Decimal	16672663
CIE _{Lab}	64.17, 61.58, 3.95
CIE _{LCh}	64, 61.705, 3.669
Yxy	33.0057, 0.4376, 0.2815
Android (android.graphics.Color)	4294862743 (0xFFFE6797)
YUV	153.6210, -1.2922, 88.0324
Hunter-Lab	57.4506, 58.8801, 6.2160

Details

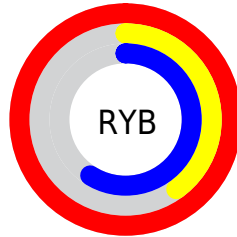
The Android color **4294862743** is a light color, and the websafe version is hex **FF6699**. A complement of this color would be **4285005518**, and the grayscale version is **4288322202**.

A 20% lighter version of the original color is **4294942925**, and **4290849636** is the 20% darker color. If you saturate the color by 10%, you get **4294856326**, and if you desaturate by 10%, it is **4294869160**.

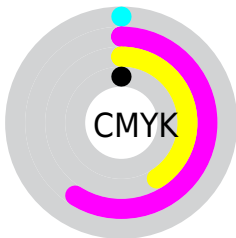
Distribution



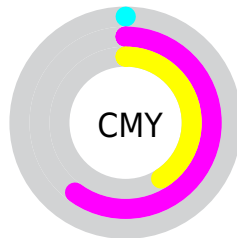
- Red (100%)
- Green (40%)
- Blue (59%)



- Red (100%)
- Yellow (40%)
- Blue (59%)



- Cyan (0%)
- Magenta (59%)
- Yellow (41%)
- Black (0%)



- Cyan (0%)
- Magenta (60%)
- Yellow (41%)

Brightness & Saturation Gradients

These gradients show how the Android color 4294862743 changes by changing the brightness by 10 percent. The first figure shows a shift by +10% for each color and the second figure -10%.

Similar to the brightness gradients but the following saturation gradients show a change of the Android color 4294862743 by changing the saturation by 10% instead.



4294862743



4294862743

4294967295



4292823677



4294942925



4290849636



4294950121



4288872525



4294957823



4286906422



4294965247



4285005857



4283170825



4281270274



4278190080



4294862743



4294862743

■ 4294856326

■ 4294869160

■ 4294849652

■ 4294875834

■ 4294843235

■ 4294882251

■ 4294836562

■ 4294888924

■ 4294836305

■ 4294895342

4294901759

Harmonies

Analogous

The Analogous color harmony consists of three colors that are next to each other on the color wheel.



4293096397



4294862743



4294603106

Triad

The Triadic color harmony groups three colors that are evenly spaced from another and form a triangle on the color wheel.



4294862743



4286163512



4278234878

Complementary

The Complementary color scheme is a pair of colors which are on the opposite of each other on the color wheel.



4294862743



4285005518

Split Complementary

Split-complementary colors differ from the complementary color scheme. The scheme consists of three colors, the original color and two neighbors of the complement color.



4278236631



4294862743



4278825576

Square

The Square scheme is like the rectangle color scheme, but the four colors are evenly spaced on the color wheel.



4294862743



4289895200



4278236833



4278952191

Rectangle

The Rectangle color scheme consists of four colors that form a rectangle on the color wheel.



4294862743



4293558083



4278236833



4278235635

Sweetspot

The Sweet Spot groups the original color and five complimentary colors.



4294862743



4294955488



4291586046



4286604140



4278190080



4286611584

Same Dimension

The Same Dimension uses a secret algorithm to generate beautiful new colors.



4294862743



4294920836



4294869095



4286608247



4290707517



4282384404

Inverse Universe

The Inverse Universe completely reimagines the original color for something new.



4294862743



4294920836



4284999166



4286608247



4290707517



4282384404

Previews

White Background



This preview shows how the Android color 4294862743 looks on a white background.

Color Contrast Check

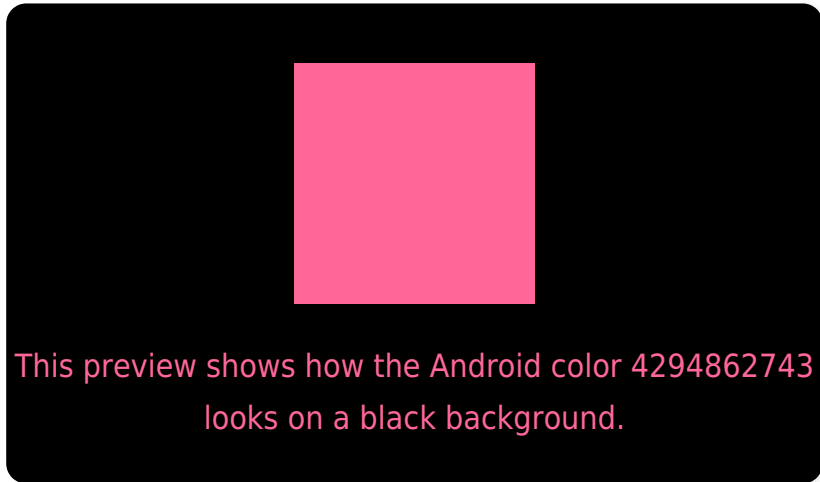
Large Text (above 18pt) WCAG AA × Fail

Any Text WCAG AA × Fail

Large Text (above 18pt) WCAG AAA × Fail

Any Text WCAG AAA × Fail

Black Background



Color Contrast Check

Large Text (above 18pt) WCAG AA ✓ Pass

Any Text WCAG AA ✓ Pass

Large Text (above 18pt) WCAG AAA ✓ Pass

Any Text WCAG AAA ✓ Pass

If you want to check with other color combinations, try the [Color Contrast Checker](#).

Android 4294862743 Background



This preview shows how black text looks on a background with the Android color 4294862743.



This preview shows how white text looks on a background with the Android color 4294862743.

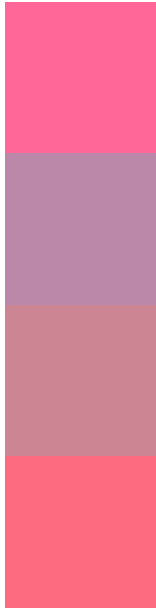
Color Blindness Simulation

Color vision deficiency is a very complex topic, and I could not describe the different causes any better than Wikipedia does, so if you want to learn more, you should check out their [article about color blindness](#).

Dichromacy



Trichromacy



Original Color
4294862743

Protanomaly
4290545834

Deuteranomaly
4291593619

Tritanomaly
4294798209

Monochromacy



Original Color
4294862743

Achromatopsia
4288322202

Achromatomaly
4290676633

CSS Examples

Text

The CSS property to change the color of the text to Android 4294862743 is called "color". The color property can be set on classes, ids or directly on the HTML element.

This example shows how text in the color `rgb(254, 103, 151)` looks like.

```
.text, #text, p{  
    color:rgb(254, 103, 151)  
}
```

If you want to add a text shadow in that color use the text-shadow property, you can generate a text shadow directly with our [CSS Text Shadow Generator](#).

Here you see how black text with a 4 pixel rgb(254, 103, 151) colored shadow looks like.

```
.shadow{ text-shadow: 4px 4px 2px rgb(254, 103, 151) }
```

Border

The CSS property to change the border of an element to Android 4294862743 is called "border". The border property can be set on classes, ids or directly on the HTML element.

This example shows the color as border, it can be applied via the CSS property "border" or "border-color".

```
.border, #border, table{ border:4px solid rgb(254, 103, 151) }
```

If only the border color should be changed use the property `border-color`.

```
.border{ border-color:rgb(254, 103, 151) }
```

If you want to add a box shadow in that color use:

Here you see how a box with a 4 pixel `rgb(254, 103, 151)` colored shadow looks like.

```
.boxshadow{ -moz-box-shadow:4px 4px 4px  
4px rgb(254, 103, 151); -webkit-box-  
shadow:4px 4px 4px 4px rgb(254, 103, 151);  
box-shadow:4px 4px 4px 4px rgb(254, 103,  
151) }
```

Background

The CSS property to change the background color of an element to Android 4294862743 is called "background". The background property can be set on classes, ids or directly on the HTML element.

```
.background, #background, body{  
background: rgb(254, 103, 151) }
```

If only the background color should be changed can be used:

```
.background{ background-color: rgb(254,  
103, 151) }
```

This example shows the color as background, it is applied via the CSS property "background".

To optimize and compress your CSS code, you can use our [online CSS compressor and optimizer](#) based on csstidy. If you want to create a linear or radial gradient as background or border, check our [CSS Gradient Generator](#).

Hey! You found this booklet interesting? Support Converting Colors with the new Membership Option!

The pro membership hides all ads, plus gives you double the colors in the color bucket, and more awesome pro features!

[Learn more, Memberships starting at \\$2.50/m!](#)

**Follow me
on Twitter!**

@ConvertingColor