

# Converting Colors

Android(4294863993)

Have a look what the booklet for  
Android(4294863993) contains.

<b>Android(4294863993)</b> .....	3
<i><b>Conversions</b></i> .....	4
<i><b>Details</b></i> .....	6
<i><b>Harmonies</b></i> .....	11
<i><b>Previews</b></i> .....	23
<i><b>Color Blindness Simulation</b></i> .....	26
<i><b>CSS Examples</b></i> .....	29

# **Color**

**Android(4294863993)**

# Conversions

## Conversions Part 1

Format	Color
Hex	FE6C79
RGB	254, 108, 121
RGB Percent	100%, 42%, 47%
CMY	0.0039, 0.5765, 0.5255
CMYK	0.00, 0.57, 0.52, 0.00
HSL	355°, 99%, 71%
HSV	355°, 57%, 100%
XYZ	49.6868, 33.1764, 21.8741
YIQ	153.1360, 82.8430, 34.9950

# Conversions

## Conversions Part 2

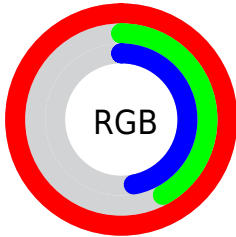
<b>Format</b>	<b>Color</b>
<b>R<sub>Y</sub>B</b>	254, 108, 121
Decimal	16673913
CIE Lab	64.30, 56.65, 21.32
CIE LCh	64, 60.526, 20.624
Yxy	33.1764, 0.4744, 0.3168
Android (android.graphics.Color)	4294863993 (0xFFFE6C79)
YUV	153.1360, -15.8430, 88.4577
Hunter-Lab	57.5990, 53.1818, 17.8030

# Details

The Android color **4294863993** is a light color, and the websafe version is hex **FF6666**. A complement of this color would be **4285333233**, and the grayscale version is **4288256409**.

A 20% lighter version of the original color is **4294943917**, and **4290786121** is the 20% darker color. If you saturate the color by 10%, you get **4294857570**, and if you desaturate by 10%, it is **4294870416**.

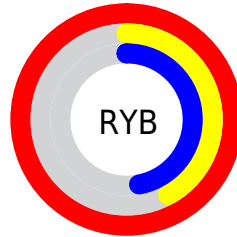
# Distribution



Red (100%)

Green (42%)

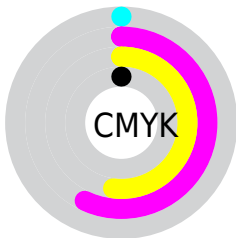
Blue (47%)



Red (100%)

Yellow (42%)

Blue (47%)

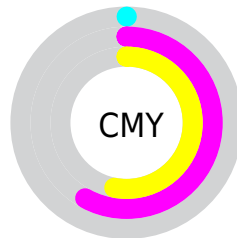


Cyan (0%)

Magenta (57%)

Yellow (52%)

Black (0%)



Cyan (0%)

Magenta (58%)

Yellow (53%)

# Brightness & Saturation Gradients

These gradients show how the Android color 4294863993 changes by changing the brightness by 10 percent. The first figure shows a shift by +10% for each color and the second figure -10%.

Similar to the brightness gradients but the following saturation gradients show a change of the Android color 4294863993 by changing the saturation by 10% instead.



 4294863993

 4294863993

4294967295

 4292825184

 4294943917

 4290786121

 4294951113

 4288810290

 4294958821

 4286840862

 4294966271

 4284874757

 4282974209

 4281073665

 4278190080

 4294863993

 4294863993

 4294857570

 4294870416

 4294850891

 4294877095

 4294844468

 4294883518

 4294837788

 4294890198

 4294836247

 4294896621

4294901759

# Harmonies

## Analogous

The Analogous color harmony consists of three colors that are next to each other on the color wheel.



4294273967



4294863993



4293688905

# Triad

The Triadic color harmony groups three colors that are evenly spaced from another and form a triangle on the color wheel.



4294863993



4283543380



4278233087

# Complementary

The Complementary color scheme is a pair of colors which are on the opposite of each other on the color wheel.



4294863993



4285333233

# Split Complementary

Split-complementary colors differ from the complementary color scheme. The scheme consists of three colors, the original color and two neighbors of the complement color.



4278235887



4294863993



4278236553

# Square

The Square scheme is like the rectangle color scheme, but the four colors are evenly spaced on the color wheel.



4294863993



4287931436



4278236864



4286486015

# Rectangle

The Rectangle color scheme consists of four colors that form a rectangle on the color wheel.



4294863993



4292185137



4278236864



4278234111



# Sweetspot

The Sweet Spot groups the original color and five complimentary colors.



4294863993



4294956248



4293881086



4286604904



4278190080



4286611584



# Same Dimension

The Same Dimension uses a secret algorithm to generate beautiful new colors.



4294863993



4294922079



4294878828



4286608244



4290707473



4282384390



# Inverse Universe

The Inverse Universe completely reimagines the original color for something new.



4294863993



4294922079



4285318398



4286608244



4290707473



4282384390



# Previews

## White Background



This preview shows how the Android color 4294863993 looks on a white background.

## Color Contrast Check

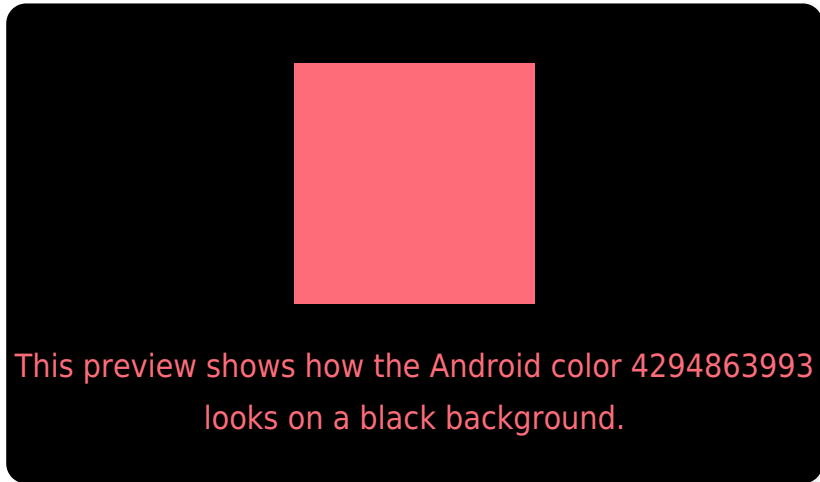
Large Text (above 18pt) WCAG AA × Fail

Any Text WCAG AA × Fail

Large Text (above 18pt) WCAG AAA × Fail

Any Text WCAG AAA × Fail

# Black Background



## Color Contrast Check

Large Text (above 18pt) WCAG AA ✓ Pass

Any Text WCAG AA ✓ Pass

Large Text (above 18pt) WCAG AAA ✓ Pass

Any Text WCAG AAA ✓ Pass

If you want to check with other color combinations, try the [Color Contrast Checker](#).



# Android 4294863993 Background



This preview shows how black text looks on a background with the Android color 4294863993.



This preview shows how white text looks on a background with the Android color 4294863993.

# Color Blindness Simulation

Color vision deficiency is a very complex topic, and I could not describe the different causes any better than Wikipedia does, so if you want to learn more, you should check out their [article about color blindness](#).

## Dichromacy



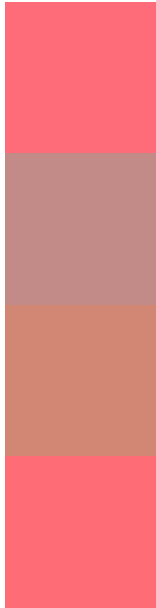
**Original Color**  
4294863993

**Protanopia**  
4288846992

**Deuteranopia**  
4290352754



# Trichromacy



**Original Color**  
4294863993

**Protanomaly**  
4291005320

**Deuteranomaly**  
4291987317

**Tritanomaly**  
4294864246

# Monochromacy



**Original Color**  
4294863993

**Achromatopsia**  
4288256409

**Achromatomaly**  
4290677133

# CSS Examples

## Text

The CSS property to change the color of the text to Android 4294863993 is called "color". The color property can be set on classes, ids or directly on the HTML element.

This example shows how text in the color `rgb(254, 108, 121)` looks like.

```
.text, #text, p{  
    color:rgb(254, 108, 121)  
}
```

If you want to add a text shadow in that color use the text-shadow property, you can generate a text shadow directly with our [CSS Text Shadow Generator](#).

Here you see how black text with a 4 pixel rgb(254, 108, 121) colored shadow looks like.

```
.shadow{ text-shadow: 4px 4px 2px rgb(254, 108, 121) }
```

## Border

The CSS property to change the border of an element to Android 4294863993 is called "border". The border property can be set on classes, ids or directly on the HTML element.

This example shows the color as border, it can be applied via the CSS property "border" or "border-color".

```
.border, #border, table{ border:4px solid rgb(254, 108, 121) }
```

If only the border color should be changed use the property `border-color`.

```
.border{ border-color:rgb(254, 108, 121) }
```

If you want to add a box shadow in that color use:

Here you see how a box with a 4 pixel `rgb(254, 108, 121)` colored shadow looks like.

```
.boxshadow{ -moz-box-shadow:4px 4px 4px  
4px rgb(254, 108, 121); -webkit-box-  
shadow:4px 4px 4px 4px rgb(254, 108, 121);  
box-shadow:4px 4px 4px 4px rgb(254, 108,  
121) }
```

# Background

The CSS property to change the background color of an element to Android 4294863993 is called "background". The background property can be set on classes, ids or directly on the HTML element.

```
.background, #background, body{  
background: rgb(254, 108, 121) }
```

If only the background color should be changed can be used:

```
.background{ background-color: rgb(254,  
108, 121) }
```

This example shows the color as background, it is applied via the CSS property "background".

To optimize and compress your CSS code, you can use our [online CSS compressor and optimizer](#) based on csstidy. If you want to create a linear or radial gradient as background or border, check our [CSS Gradient Generator](#).



Hey! You found this booklet interesting? Support Converting Colors with the new Membership Option!

The pro membership hides all ads, plus gives you double the colors in the color bucket, and more awesome pro features!

**[Learn more, Memberships starting at \\$2.50/m!](#)**

**Follow me  
on Twitter!**

@ConvertingColor