

Converting Colors

Android(4294864267)

Have a look what the booklet for
Android(4294864267) contains.

Android(4294864267)	3
<i>Conversions</i>	4
<i>Details</i>	6
<i>Harmonies</i>	11
<i>Previews</i>	23
<i>Color Blindness Simulation</i>	26
<i>CSS Examples</i>	29

Color

Android(4294864267)

Conversions

Conversions Part 1

Format	Color
Hex	FE6D8B
RGB	254, 109, 139
RGB Percent	100%, 43%, 55%
CMY	0.0039, 0.5725, 0.4549
CMYK	0.00, 0.57, 0.45, 0.00
HSL	348°, 99%, 71%
HSV	348°, 57%, 100%
XYZ	51.0019, 33.8722, 28.2760
YIQ	155.7750, 76.7900, 40.0700

Conversions

Conversions Part 2

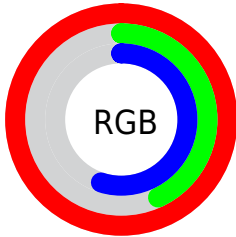
Format	Color
RYB	254, 109, 139
Decimal	16674187
CIELab	64.86, 57.77, 11.82
CIElCh	65, 58.963, 11.560
Yxy	33.8722, 0.4507, 0.2994
Android (android.graphics.Color)	4294864267 (0xFFFE6D8B)
YUV	155.7750, -8.2701, 86.1433
Hunter-Lab	58.1998, 54.5741, 11.9342

Details

The Android color **4294864267** is a light color, and the websafe version is hex **FF6699**. A complement of this color would be **4285398752**, and the grayscale version is **4288453788**.

A 20% lighter version of the original color is **4294944192**, and **4290851929** is the 20% darker color. If you saturate the color by 10%, you get **4294857847**, and if you desaturate by 10%, it is **4294870687**.

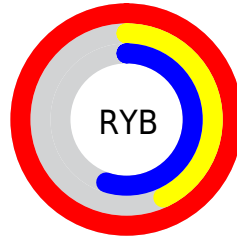
Distribution



Red (100%)

Green (43%)

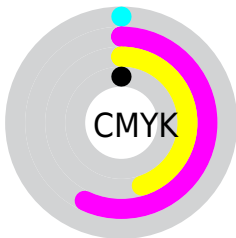
Blue (55%)



Red (100%)

Yellow (43%)

Blue (55%)

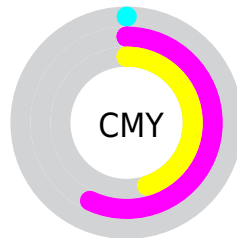


Cyan (0%)

Magenta (57%)

Yellow (45%)

Black (0%)



Cyan (0%)

Magenta (57%)

Yellow (45%)

Brightness & Saturation Gradients

These gradients show how the Android color 4294864267 changes by changing the brightness by 10 percent. The first figure shows a shift by +10% for each color and the second figure -10%.

Similar to the brightness gradients but the following saturation gradients show a change of the Android color 4294864267 by changing the saturation by 10% instead.



4294864267



4294864267

4294967295



4292825458



4294944192



4290851929



4294951644



4288875842



4294959097



4286906412



4294966527



4285005848



4283105281



4281270274



4278190080



4294864267



4294864267

■ 4294857847

■ 4294870687

■ 4294851171

■ 4294877363

■ 4294844751

■ 4294883783

■ 4294838074

■ 4294890460

■ 4294836277

■ 4294896880

4294901759

Harmonies

Analogous

The Analogous color harmony consists of three colors that are next to each other on the color wheel.



4293686208



4294864267



4294212186

Triad

The Triadic color harmony groups three colors that are evenly spaced from another and form a triangle on the color wheel.



4294864267



4285312586



4278234367

Complementary

The Complementary color scheme is a pair of colors which are on the opposite of each other on the color wheel.



4294864267



4285398752

Split Complementary

Split-complementary colors differ from the complementary color scheme. The scheme consists of three colors, the original color and two neighbors of the complement color.



4278236642



4294864267



4278236538

Square

The Square scheme is like the rectangle color scheme, but the four colors are evenly spaced on the color wheel.



4294864267



4289110316



4278237105



4284390655

Rectangle

The Rectangle color scheme consists of four colors that form a rectangle on the color wheel.



4294864267



4292970559



4278237105



4278235385

Sweetspot

The Sweet Spot groups the original color and five complimentary colors.



4294864267



4294956253



4292832766



4286604907



4278190080



4286611584

Same Dimension

The Same Dimension uses a secret algorithm to generate beautiful new colors.



4294864267



4294922099



4294874733



4286608245



4290707496



4282384397

Inverse Universe

The Inverse Universe completely reimagines the original color for something new.



4294864267



4294922099



4285388286



4286608245



4290707496



4282384397

Previews

White Background



This preview shows how the Android color 4294864267 looks on a white background.

Color Contrast Check

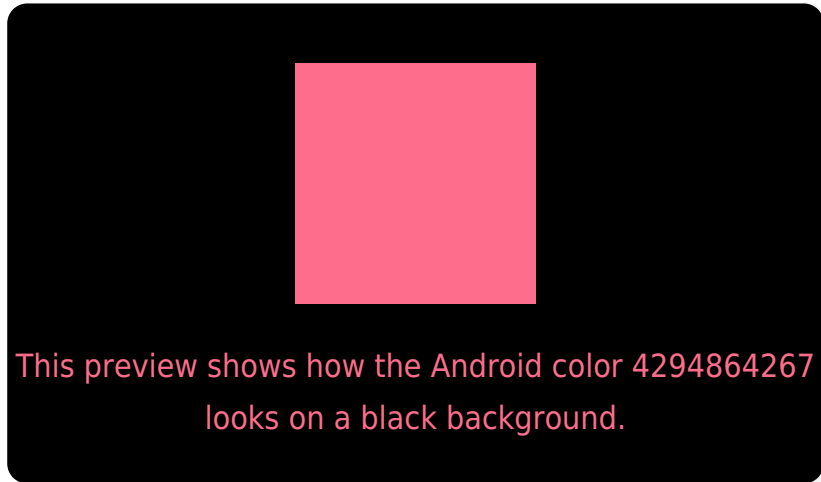
Large Text (above 18pt) WCAG AA × Fail

Any Text WCAG AA × Fail

Large Text (above 18pt) WCAG AAA × Fail

Any Text WCAG AAA × Fail

Black Background



Color Contrast Check

Large Text (above 18pt) WCAG AA ✓ Pass

Any Text WCAG AA ✓ Pass

Large Text (above 18pt) WCAG AAA ✓ Pass

Any Text WCAG AAA ✓ Pass

If you want to check with other color combinations, try the [Color Contrast Checker](#).

Android 4294864267 Background



This preview shows how black text looks on a background with the Android color 4294864267.



This preview shows how white text looks on a background with the Android color 4294864267.

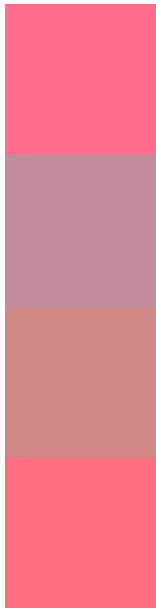
Color Blindness Simulation

Color vision deficiency is a very complex topic, and I could not describe the different causes any better than Wikipedia does, so if you want to learn more, you should check out their [article about color blindness](#).

Dichromacy



Trichromacy



Original Color
4294864267

Protanomaly
4290874524

Deuteranomaly
4291856519

Tritanomaly
4294799231

Monochromacy



Original Color
4294864267

Achromatopsia
4288453788

Achromatomaly
4290808726

CSS Examples

Text

The CSS property to change the color of the text to Android 4294864267 is called "color". The color property can be set on classes, ids or directly on the HTML element.

This example shows how text in the color `rgb(254, 109, 139)` looks like.

```
.text, #text, p{  
    color:rgb(254, 109, 139)  
}
```

If you want to add a text shadow in that color use the text-shadow property, you can generate a text shadow directly with our [CSS Text Shadow Generator](#).

Here you see how black text with a 4 pixel rgb(254, 109, 139) colored shadow looks like.

```
.shadow{ text-shadow: 4px 4px 2px rgb(254, 109, 139) }
```

Border

The CSS property to change the border of an element to Android 4294864267 is called "border". The border property can be set on classes, ids or directly on the HTML element.

This example shows the color as border, it can be applied via the CSS property "border" or "border-color".

```
.border, #border, table{ border:4px solid rgb(254, 109, 139) }
```

If only the border color should be changed use the property `border-color`.

```
.border{ border-color:rgb(254, 109, 139) }
```

If you want to add a box shadow in that color use:

Here you see how a box with a 4 pixel `rgb(254, 109, 139)` colored shadow looks like.

```
.boxshadow{ -moz-box-shadow:4px 4px 4px  
4px rgb(254, 109, 139); -webkit-box-  
shadow:4px 4px 4px 4px rgb(254, 109, 139);  
box-shadow:4px 4px 4px 4px rgb(254, 109,  
139) }
```

Background

The CSS property to change the background color of an element to Android 4294864267 is called "background". The background property can be set on classes, ids or directly on the HTML element.

```
.background, #background, body{  
background: rgb(254, 109, 139) }
```

If only the background color should be changed can be used:

```
.background{ background-color: rgb(254,  
109, 139) }
```

This example shows the color as background, it is applied via the CSS property "background".

To optimize and compress your CSS code, you can use our [online CSS compressor and optimizer](#) based on csstidy. If you want to create a linear or radial gradient as background or border, check our [CSS Gradient Generator](#).

Hey! You found this booklet interesting? Support Converting Colors with the new Membership Option!

The pro membership hides all ads, plus gives you double the colors in the color bucket, and more awesome pro features!

[Learn more, Memberships starting at \\$2.50/m!](#)

**Follow me
on Twitter!**

@ConvertingColor