

Converting Colors

Android(4294869307)

Have a look what the booklet for
Android(4294869307) contains.

Android(4294869307)	3
<i>Conversions</i>	4
<i>Details</i>	6
<i>Harmonies</i>	11
<i>Previews</i>	23
<i>Color Blindness Simulation</i>	26
<i>CSS Examples</i>	29

Color

Android(4294869307)

Conversions

Conversions Part 1

Format	Color
Hex	FE813B
RGB	254, 129, 59
RGB Percent	100%, 51%, 23%
CMY	0.0039, 0.4941, 0.7686
CMYK	0.00, 0.49, 0.77, 0.00
HSL	22°, 99%, 61%
HSV	22°, 77%, 100%
XYZ	49.5127, 37.0871, 8.6866
YIQ	158.3950, 96.9700, 4.7300

Conversions

Conversions Part 2

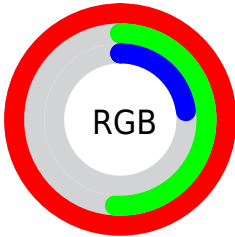
Format	Color
RYB	254, 168, 59
Decimal	16679227
CIELab	67.34, 43.08, 57.60
CIElCh	67, 71.923, 53.206
Yxy	37.0871, 0.5196, 0.3892
Android (android.graphics.Color)	4294869307 (0xFFFE813B)
YUV	158.3950, -49.0017, 83.8456
Hunter-Lab	60.8992, 38.5519, 34.1724

Details

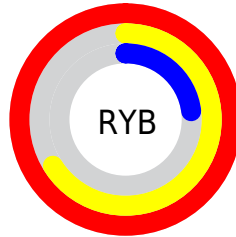
The Android color **4294869307** is a dark color, and the websafe version is hex **FF6633**. The color can be described as middle washed orange. A complement of this color would be **4282104062**, and the grayscale version is **4288651167**.

A 20% lighter version of the original color is **4294948974**, and **4290727168** is the 20% darker color. If you saturate the color by 10%, you get **4294865186**, and if you desaturate by 10%, it is **4294873428**.

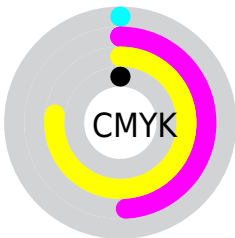
Distribution



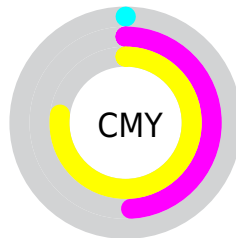
- Red (100%)
- Green (51%)
- Blue (23%)



- Red (100%)
- Yellow (66%)
- Blue (23%)



- Cyan (0%)
- Magenta (49%)
- Yellow (77%)
- Black (0%)



- Cyan (0%)
- Magenta (49%)
- Yellow (77%)

Brightness & Saturation Gradients

These gradients show how the Android color 4294869307 changes by changing the brightness by 10 percent. The first figure shows a shift by +10% for each color and the second figure -10%.

Similar to the brightness gradients but the following saturation gradients show a change of the Android color 4294869307 by changing the saturation by 10% instead.



4294869307



4294869307

4294967295



4292765473



4294948974



4290727168



4294956169



4288688896



4294963620



4286650112



4294967232



4284678144



4294967260



4282777600



4294967289



4281073665



4278190080



4294869307



4294869307

4294865186

4294873428

4294860808

4294877806

4294859520

4294881927

4294886049

4294890170

4294894547

4294898669

4294901759

Harmonies

Analogous

The Analogous color harmony consists of three colors that are next to each other on the color wheel.



4294928501



4294869307



4291861504

Triad

The Triadic color harmony groups three colors that are evenly spaced from another and form a triangle on the color wheel.



4294869307



4278239635



4287011327

Complementary

The Complementary color scheme is a pair of colors which are on the opposite of each other on the color wheel.



4294869307



4282104062

Split Complementary

Split-complementary colors differ from the complementary color scheme. The scheme consists of three colors, the original color and two neighbors of the complement color.



4278235391



4294869307



4278239957

Square

The Square scheme is like the rectangle color scheme, but the four colors are evenly spaced on the color wheel.



4294869307



4281776977



4278238719



4293164019

Rectangle

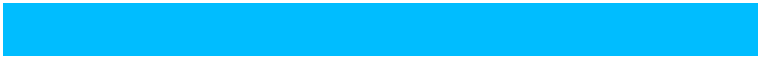
The Rectangle color scheme consists of four colors that form a rectangle on the color wheel.



4294869307



4289309184



4278238719



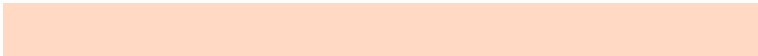
4283278079

Sweetspot

The Sweet Spot groups the original color and five complimentary colors.



4294869307



4294957508



4294851514



4286605660



4278190080



4286611584

Same Dimension

The Same Dimension uses a secret algorithm to generate beautiful new colors.



4294869307



4294928660



4294893883



4286609267



4290725120



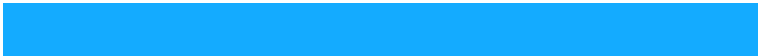
4282390272

Inverse Universe

The Inverse Universe completely reimagines the original color for something new.



4282104062



4279544831



4282079486



4285758336



4278221759



4278200640

Previews

White Background



This preview shows how the Android color 4294869307 looks on a white background.

Color Contrast Check

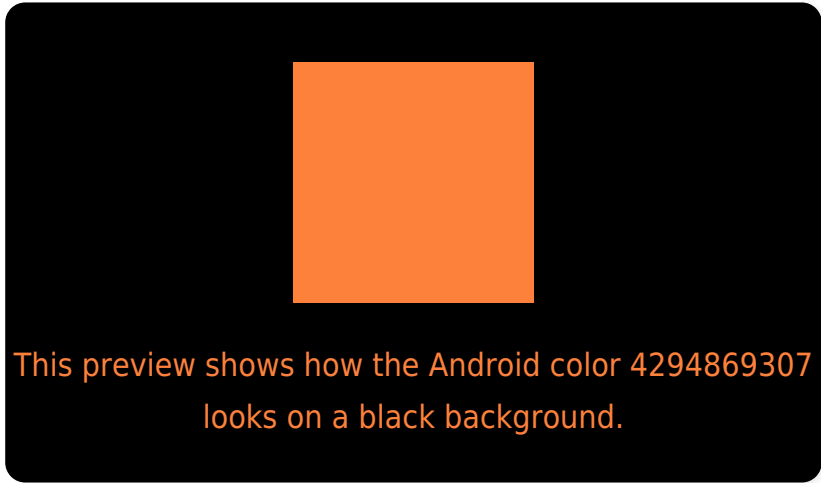
Large Text (above 18pt) WCAG AA × Fail

Any Text WCAG AA × Fail

Large Text (above 18pt) WCAG AAA × Fail

Any Text WCAG AAA × Fail

Black Background



Color Contrast Check

Large Text (above 18pt) WCAG AA ✓ Pass

Any Text WCAG AA ✓ Pass

Large Text (above 18pt) WCAG AAA ✓ Pass

Any Text WCAG AAA ✓ Pass

If you want to check with other color combinations, try the [Color Contrast Checker](#).

Android 4294869307 Background



This preview shows how black text looks on a background with the Android color 4294869307.



This preview shows how white text looks on a background with the Android color 4294869307.

Color Blindness Simulation

Color vision deficiency is a very complex topic, and I could not describe the different causes any better than Wikipedia does, so if you want to learn more, you should check out their [article about color blindness](#).

Dichromacy



Original Color
4294869307

Protanopia
4290225477

Deuteranopia
4291730483

Trichromacy



Original Color

4294869307



Protanomaly

4291926081



Deuteranomaly

4292842038



Tritanomaly

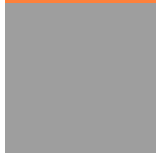
4294933865

Monochromacy



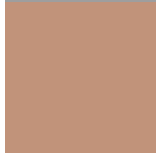
Original Color

4294869307



Achromatopsia

4288585374



Achromatomaly

4290876282

CSS Examples

Text

The CSS property to change the color of the text to Android 4294869307 is called "color". The color property can be set on classes, ids or directly on the HTML element.

This example shows how text in the color `rgb(254, 129, 59)` looks like.

```
.text, #text, p{  
    color:rgb(254, 129, 59)  
}
```

If you want to add a text shadow in that color use the text-shadow property, you can generate a text shadow directly with our [CSS Text Shadow Generator](#).

Here you see how black text with a 4 pixel rgb(254, 129, 59) colored shadow looks like.

```
.shadow{ text-shadow: 4px 4px 2px rgb(254, 129, 59) }
```

Border

The CSS property to change the border of an element to Android 4294869307 is called "border". The border property can be set on classes, ids or directly on the HTML element.

This example shows the color as border, it can be applied via the CSS property "border" or "border-color".

```
.border, #border, table{ border:4px solid rgb(254, 129, 59) }
```

If only the border color should be changed use the property `border-color`.

```
.border{ border-color:rgb(254, 129, 59) }
```

If you want to add a box shadow in that color use:

Here you see how a box with a 4 pixel `rgb(254, 129, 59)` colored shadow looks like.

```
.boxshadow{ -moz-box-shadow:4px 4px 4px  
4px rgb(254, 129, 59); -webkit-box-  
shadow:4px 4px 4px 4px rgb(254, 129, 59);  
box-shadow:4px 4px 4px 4px rgb(254, 129,  
59) }
```

Background

The CSS property to change the background color of an element to Android 4294869307 is called "background". The background property can be set on classes, ids or directly on the HTML element.

```
.background, #background, body{  
background: rgb(254, 129, 59) }
```

If only the background color should be changed can be used:

```
.background{ background-color: rgb(254,  
129, 59) }
```

This example shows the color as background, it is applied via the CSS property "background".

To optimize and compress your CSS code, you can use our [online CSS compressor and optimizer](#) based on csstidy. If you want to create a linear or radial gradient as background or border, check our [CSS Gradient Generator](#).

Hey! You found this booklet interesting? Support Converting Colors with the new Membership Option!

The pro membership hides all ads, plus gives you double the colors in the color bucket, and more awesome pro features!

[Learn more, Memberships starting at \\$2.50/m!](#)

**Follow me
on Twitter!**

@ConvertingColor