

Converting Colors

Android(4294884302)

Have a look what the booklet for
Android(4294884302) contains.

Android(4294884302)	3
<i>Conversions</i>	4
<i>Details</i>	6
<i>Harmonies</i>	11
<i>Previews</i>	23
<i>Color Blindness Simulation</i>	26
<i>CSS Examples</i>	29

Color

Android(4294884302)

Conversions

Conversions Part 1

Format	Color
Hex	FEBBCE
RGB	254, 187, 206
RGB Percent	100%, 73%, 81%
CMY	0.0039, 0.2667, 0.1922
CMYK	0.00, 0.26, 0.19, 0.00
HSL	343°, 97%, 86%
HSV	343°, 26%, 100%
XYZ	69.7840, 61.0677, 66.5018
YIQ	209.1990, 33.8330, 20.1130

Conversions

Conversions Part 2

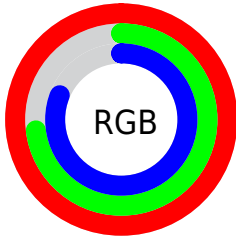
Format	Color
RYB	254, 187, 206
Decimal	16694222
CIELab	82.42, 26.87, -0.01
CIELCh	82, 26.865, 359.983
Yxy	61.0677, 0.3536, 0.3094
Android (android.graphics.Color)	4294884302 (0xFFFEBBCE)
YUV	209.1990, -1.5771, 39.2905
Hunter-Lab	78.1458, 22.6447, 4.2466

Details

The Android color `4294884302` is a light color, and the websafe version is hex `FFCCCC`. A complement of this color would be `4290510571`, and the grayscale version is `4291940817`.

A 20% lighter version of the original color is `4294964479`, and `4291069336` is the 20% darker color. If you saturate the color by 10%, you get `4294877884`, and if you desaturate by 10%, it is `4294890720`.

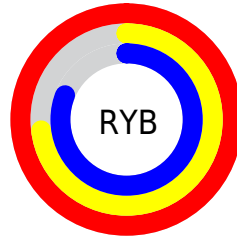
Distribution



Red (100%)

Green (73%)

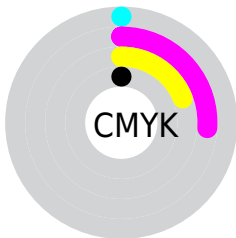
Blue (81%)



Red (100%)

Yellow (73%)

Blue (81%)

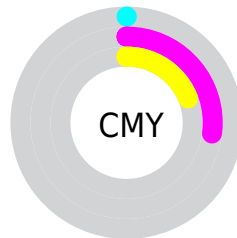


Cyan (0%)

Magenta (26%)

Yellow (19%)

Black (0%)



Cyan (0%)

Magenta (27%)

Yellow (19%)

Brightness & Saturation Gradients

These gradients show how the Android color 4294884302 changes by changing the brightness by 10 percent. The first figure shows a shift by +10% for each color and the second figure -10%.

Similar to the brightness gradients but the following saturation gradients show a change of the Android color 4294884302 by changing the saturation by 10% instead.

 4294884302

 4294884302

4294967295

 4292976819

 4294964479

 4291069336


 4289227902

 4287452005

 4285741901

 4284032054

 4282387489

 4281008138

 4278190080

 4294884302

 4294884302

 4294877884

 4294890720

 4294871210

 4294897394

 4294864791

4294901759

 4294858117

 4294851699

 4294845281

 4294838607

 4294836296

Harmonies

Analogous

The Analogous color harmony consists of three colors that are next to each other on the color wheel.



4293836775



4294884302



4294950325

Triad

The Triadic color harmony groups three colors that are evenly spaced from another and form a triangle on the color wheel.



4294884302



4291154849



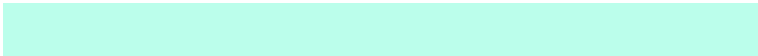
4287747832

Complementary

The Complementary color scheme is a pair of colors which are on the opposite of each other on the color wheel.



4294884302



4290510571

Split Complementary

Split-complementary colors differ from the complementary color scheme. The scheme consists of three colors, the original color and two neighbors of the complement color.



4286962661



4294884302



4289255859

Square

The Square scheme is like the rectangle color scheme, but the four colors are evenly spaced on the color wheel.



4294884302



4292922267



4287617996



4289712127

Rectangle

The Rectangle color scheme consists of four colors that form a rectangle on the color wheel.



4294884302



4294623655



4287617996



4287289587

Sweetspot

The Sweet Spot groups the original color and five complimentary colors.



4294884302



4294962160



4293573630



4286608246



4278190080



4286611584

Same Dimension

The Same Dimension uses a secret algorithm to generate beautiful new colors.



4294884302



4294946245



4294887611



4286608246



4290707510



4282384402

Inverse Universe

The Inverse Universe completely reimagines the original color for something new.



4294884302



4294946245



4290507262



4286608246



4290707510



4282384402

Previews

White Background



This preview shows how the Android color 4294884302 looks on a white background.

Color Contrast Check

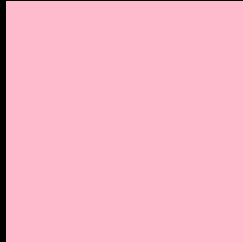
Large Text (above 18pt) WCAG AA × Fail

Any Text WCAG AA × Fail

Large Text (above 18pt) WCAG AAA × Fail

Any Text WCAG AAA × Fail

Black Background



This preview shows how the Android color 4294884302 looks on a black background.

Color Contrast Check

Large Text (above 18pt) WCAG AA ✓ Pass

Any Text WCAG AA ✓ Pass

Large Text (above 18pt) WCAG AAA ✓ Pass

Any Text WCAG AAA ✓ Pass

If you want to check with other color combinations, try the [Color Contrast Checker](#).

Android 4294884302 Background



This preview shows how black text looks on a background with the Android color 4294884302.




This preview shows how white text looks on a background with the Android color 4294884302.

Color Blindness Simulation

Color vision deficiency is a very complex topic, and I could not describe the different causes any better than Wikipedia does, so if you want to learn more, you should check out their [article about color blindness](#).

Dichromacy



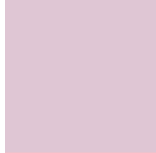


Tritanopia
4294884554

Trichromacy



Original Color
4294884302



Protanomaly
4292855508



Deuteranomaly
4293706701

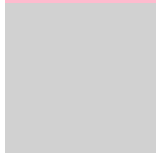


Tritanomaly
4294884555

Monochromacy



Original Color
4294884302



Achromatopsia
4291940817



Achromatomaly
4292987344

CSS Examples

Text

The CSS property to change the color of the text to Android 4294884302 is called "color". The color property can be set on classes, ids or directly on the HTML element.

This example shows how text in the color `rgb(254, 187, 206)` looks like.

```
.text, #text, p{  
    color:rgb(254, 187, 206)  
}
```

If you want to add a text shadow in that color use the text-shadow property, you can generate a text shadow directly with our [CSS Text Shadow Generator](#).

Here you see how black text with a 4 pixel rgb(254, 187, 206) colored shadow looks like.

```
.shadow{ text-shadow: 4px 4px 2px rgb(254, 187, 206) }
```

Border

The CSS property to change the border of an element to Android 4294884302 is called "border". The border property can be set on classes, ids or directly on the HTML element.

This example shows the color as border, it can be applied via the CSS property "border" or "border-color".

```
.border, #border, table{ border:4px solid rgb(254, 187, 206) }
```

If only the border color should be changed use the property `border-color`.

```
.border{ border-color:rgb(254, 187, 206) }
```

If you want to add a box shadow in that color use:

Here you see how a box with a 4 pixel `rgb(254, 187, 206)` colored shadow looks like.

```
.boxshadow{ -moz-box-shadow:4px 4px 4px  
4px rgb(254, 187, 206); -webkit-box-  
shadow:4px 4px 4px 4px rgb(254, 187, 206);  
box-shadow:4px 4px 4px 4px rgb(254, 187,  
206) }
```

Background

The CSS property to change the background color of an element to Android 4294884302 is called "background". The background property can be set on classes, ids or directly on the HTML element.

```
.background, #background, body{  
background: rgb(254, 187, 206) }
```

If only the background color should be changed can be used:

```
.background{ background-color: rgb(254,  
187, 206) }
```

This example shows the color as background, it is applied via the CSS property "background".

To optimize and compress your CSS code, you can use our [online CSS compressor and optimizer](#) based on csstidy. If you want to create a linear or radial gradient as background or border, check our [CSS Gradient Generator](#).

Hey! You found this booklet interesting? Support Converting Colors with the new Membership Option!

The pro membership hides all ads, plus gives you double the colors in the color bucket, and more awesome pro features!

[Learn more, Memberships starting at \\$2.50/m!](#)

**Follow me
on Twitter!**

@ConvertingColor