

Converting Colors

Android(4294909794)

Have a look what the booklet for
Android(4294909794) contains.

| | |
|--|----|
| Android(4294909794) | 3 |
| <i>Conversions</i> | 4 |
| <i>Details</i> | 6 |
| <i>Harmonies</i> | 11 |
| <i>Previews</i> | 23 |
| <i>Color Blindness Simulation</i> | 26 |
| <i>CSS Examples</i> | 29 |

Color

Android(4294909794)

Conversions

Conversions Part 1

| Format | Color |
|-------------|-----------------------------|
| Hex | FF1F62 |
| RGB | 255, 31, 98 |
| RGB Percent | 100%, 12%, 38% |
| CMY | 0.0000, 0.8784, 0.6157 |
| CMYK | 0.00, 0.88, 0.62, 0.00 |
| HSL | 342°, 100%, 56% |
| HSV | 342°, 88%, 100% |
| XYZ | 43.9346, 23.1218, 13.7026 |
| YIQ | 105.6140, 111.9970, 68.3250 |

Conversions

Conversions Part 2

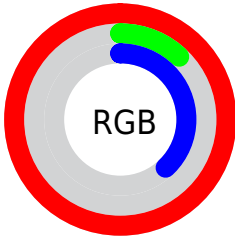
| Format | Color |
|-------------------------------------|--------------------------------|
| R_{YB} | 255, 31, 98 |
| Decimal | 16719714 |
| CIE _{Lab} | 55.20, 79.71, 22.53 |
| CIE _{LCh} | 55, 82.834, 15.782 |
| Yxy | 23.1218, 0.5440, 0.2863 |
| Android (android.graphics.Color) | 4294909794 (0xFFFF1F62) |
| YUV | 105.6140, -3.7537, 131.0115 |
| Hunter-Lab | 48.0851, 78.9434, 16.7640 |

Details

The Android color **4294909794** is a dark color, and the websafe version is hex **FF3366**. The color can be described as dark washed rose. A complement of this color would be **4280287164**, and the grayscale version is **4285164138**.

A 20% lighter version of the original color is **4294929300**, and **4290641972** is the 20% darker color. If you saturate the color by 10%, you get **4294903376**, and if you desaturate by 10%, it is **4294916468**.

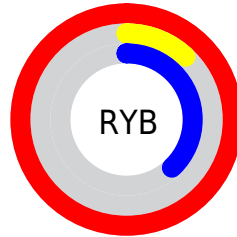
Distribution



Red (100%)

Green (12%)

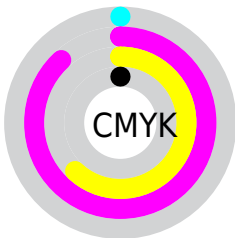
Blue (38%)



Red (100%)

Yellow (12%)

Blue (38%)

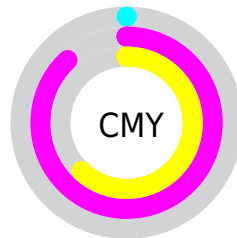


Cyan (0%)

Magenta (88%)

Yellow (62%)

Black (0%)



Cyan (0%)

Magenta (88%)

Yellow (62%)

Brightness & Saturation Gradients

These gradients show how the Android color 4294909794 changes by changing the brightness by 10 percent. The first figure shows a shift by +10% for each color and the second figure -10%.

Similar to the brightness gradients but the following saturation gradients show a change of the Android color 4294909794 by changing the saturation by 10% instead.

 4294909794

 4294909794

4294967295

 4292739147

 4294929300

 4290641972

 4294937263

 4288544800

 4294944970

 4286513162

 4294952678

 4284416003

 4294960639

 4282384387

 4280090625

 4278190080

 4294909794

 4294909794

■ 4294903376

■ 4294916468

■ 4294901836

■ 4294922886

■ 4294929304

■ 4294935977

■ 4294942651

■ 4294949069

■ 4294955743

■ 4294962161

4294967295

Harmonies

Analogous

The Analogous color harmony consists of three colors that are next to each other on the color wheel.



4293994921



4294909794



4293545753

Triad

The Triadic color harmony groups three colors that are evenly spaced from another and form a triangle on the color wheel.



4294909794



4278229504



4278228991

Complementary

The Complementary color scheme is a pair of colors which are on the opposite of each other on the color wheel.



4294909794



4280287164

Split Complementary

Split-complementary colors differ from the complementary color scheme. The scheme consists of three colors, the original color and two neighbors of the complement color.



4278231275



4294909794



4278231390

Square

The Square scheme is like the rectangle color scheme, but the four colors are evenly spaced on the color wheel.



4294909794



4286418176



4278231977



4278223103

Rectangle

The Rectangle color scheme consists of four colors that form a rectangle on the color wheel.



4294909794



4291651840



4278231977



4278230015

Sweetspot

The Sweet Spot groups the original color and five complimentary colors.



4294909794



4294950353



4290519039



4286601316



4278190080



4286611584

Same Dimension

The Same Dimension uses a secret algorithm to generate beautiful new colors.



4294909794



4294901836



4294921247



4286608247



4290707513



4282384403

Inverse Universe

The Inverse Universe completely reimagines the original color for something new.



4294909794



4294901836



4280275711



4286608247



4290707513



4282384403

Previews

White Background



This preview shows how the Android color 4294909794 looks on a white background.

Color Contrast Check

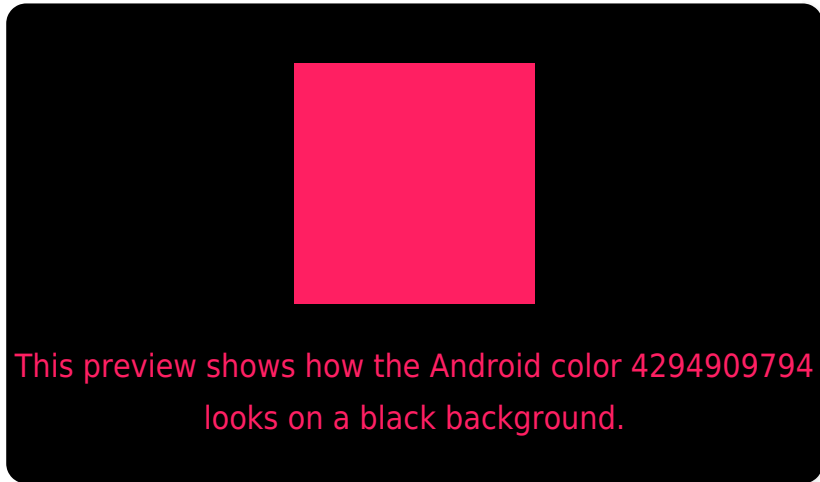
Large Text (above 18pt) WCAG AA ✓ Pass

Any Text WCAG AA ✗ Fail

Large Text (above 18pt) WCAG AAA ✗ Fail

Any Text WCAG AAA ✗ Fail

Black Background



Color Contrast Check

Large Text (above 18pt) WCAG AA ✓ Pass

Any Text WCAG AA ✓ Pass

Large Text (above 18pt) WCAG AAA ✓ Pass

Any Text WCAG AAA × Fail

If you want to check with other color combinations, try the [Color Contrast Checker](#).

Android 4294909794 Background



This preview shows how black text looks on a background with the Android color 4294909794.



This preview shows how white text looks on a background with the Android color 4294909794.

Color Blindness Simulation

Color vision deficiency is a very complex topic, and I could not describe the different causes any better than Wikipedia does, so if you want to learn more, you should check out their [article about color blindness](#).

Dichromacy



Original Color

4294909794

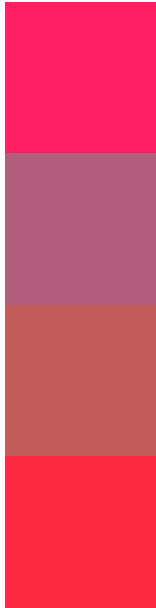
Protanopia

4286940300

Deuteranopia

4288642903

Trichromacy



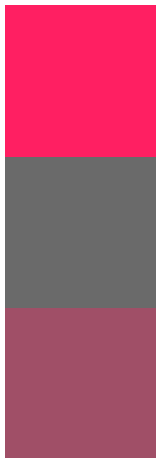
Original Color
4294909794

Protanomaly
4289814397

Deuteranomaly
4290927707

Tritanomaly
4294846786

Monochromacy



Original Color
4294909794

Achromatopsia
4285164138

Achromatomaly
4288696167

CSS Examples

Text

The CSS property to change the color of the text to Android 4294909794 is called "color". The color property can be set on classes, ids or directly on the HTML element.

This example shows how text in the color `rgb(255, 31, 98)` looks like.

```
.text, #text, p{  
    color:rgb(255, 31, 98)  
}
```

If you want to add a text shadow in that color use the text-shadow property, you can generate a text shadow directly with our [CSS Text Shadow Generator](#).

Here you see how black text with a 4 pixel rgb(255, 31, 98) colored shadow looks like.

```
.shadow{ text-shadow: 4px 4px 2px rgb(255, 31, 98) }
```

Border

The CSS property to change the border of an element to Android 4294909794 is called "border". The border property can be set on classes, ids or directly on the HTML element.

This example shows the color as border, it can be applied via the CSS property "border" or "border-color".

```
.border, #border, table{ border:4px solid rgb(255, 31, 98) }
```

If only the border color should be changed use the property border-color.

```
.border{ border-color:rgb(255, 31, 98) }
```

If you want to add a box shadow in that color use:

Here you see how a box with a 4 pixel rgb(255, 31, 98) colored shadow looks like.

```
.boxshadow{ -moz-box-shadow:4px 4px 4px  
4px rgb(255, 31, 98); -webkit-box-  
shadow:4px 4px 4px 4px rgb(255, 31, 98);  
box-shadow:4px 4px 4px 4px rgb(255, 31,  
98) }
```

Background

The CSS property to change the background color of an element to Android 4294909794 is called "background". The background property can be set on classes, ids or directly on the HTML element.

```
.background, #background, body{  
background: rgb(255, 31, 98) }
```

If only the background color should be changed can be used:

```
.background{ background-color: rgb(255, 31,  
98) }
```

This example shows the color as background, it is applied via the CSS property "background".

To optimize and compress your CSS code, you can use our [online CSS compressor and optimizer](#) based on csstidy. If you want to create a linear or radial gradient as background or border, check our [CSS Gradient Generator](#).

Hey! You found this booklet interesting? Support Converting Colors with the new Membership Option!

The pro membership hides all ads, plus gives you double the colors in the color bucket, and more awesome pro features!

[Learn more, Memberships starting at \\$2.50/m!](#)

**Follow me
on Twitter!**

@ConvertingColor