

# Converting Colors

Android(4294913122)

Have a look what the booklet for  
Android(4294913122) contains.

<b>Android(4294913122)</b> .....	3
<i><b>Conversions</b></i> .....	4
<i><b>Details</b></i> .....	6
<i><b>Harmonies</b></i> .....	11
<i><b>Previews</b></i> .....	23
<i><b>Color Blindness Simulation</b></i> .....	26
<i><b>CSS Examples</b></i> .....	29

**Color**

**Android(4294913122)**

# Conversions

## Conversions Part 1

Format	Color
Hex	FF2C62
RGB	255, 44, 98
RGB Percent	100%, 17%, 38%
CMY	0.0000, 0.8275, 0.6157
CMYK	0.00, 0.83, 0.62, 0.00
HSL	345°, 100%, 59%
HSV	345°, 83%, 100%
XYZ	44.3453, 23.9432, 13.8395
YIQ	113.2450, 108.4220, 61.5260

# Conversions

## Conversions Part 2

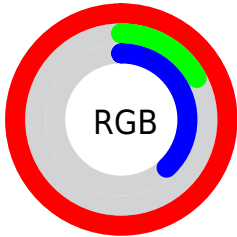
<b>Format</b>	<b>Color</b>
<b>R<sub>YB</sub></b>	255, 44, 98
Decimal	16723042
CIE <sub>Lab</sub>	56.03, 77.32, 23.63
CIE <sub>LCh</sub>	56, 80.852, 16.996
Yxy	23.9432, 0.5400, 0.2915
Android (android.graphics.Color)	4294913122 (0xFFFF2C62)
YUV	113.2450, -7.5158, 124.3191
Hunter-Lab	48.9318, 76.1381, 17.4831

# Details

The Android color **4294913122** is a dark color, and the websafe version is hex **FF3366**. The color can be described as dark washed rose. A complement of this color would be **4281139145**, and the grayscale version is **4285624689**.

A 20% lighter version of the original color is **4294930836**, and **4290641972** is the 20% darker color. If you saturate the color by 10%, you get **4294906703**, and if you desaturate by 10%, it is **4294919797**.

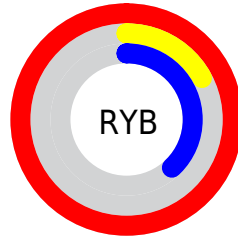
# Distribution



Red (100%)

Green (17%)

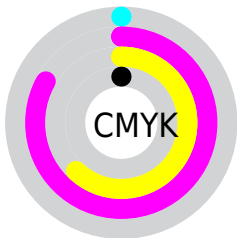
Blue (38%)



Red (100%)

Yellow (17%)

Blue (38%)

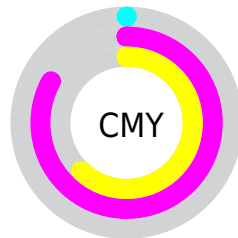


Cyan (0%)

Magenta (83%)

Yellow (62%)

Black (0%)



Cyan (0%)

Magenta (83%)

Yellow (62%)

# Brightness & Saturation Gradients

These gradients show how the Android color 4294913122 changes by changing the brightness by 10 percent. The first figure shows a shift by +10% for each color and the second figure -10%.

Similar to the brightness gradients but the following saturation gradients show a change of the Android color 4294913122 by changing the saturation by 10% instead.





4294913122



4294913122

4294967295



4292804682



4294930836



4290641972



4294938799



4288610336



4294946506



4286513162



4294954214



4284481539



4294961919



4282449923



4280221697



4278190080



4294913122



4294913122

■ 4294906703

■ 4294919797

■ 4294901825

■ 4294926216

■ 4294932891

■ 4294939310

■ 4294945985

■ 4294952404

■ 4294959079

■ 4294965498

4294967295

# Harmonies

## Analogous

The Analogous color harmony consists of three colors that are next to each other on the color wheel.



4294062504



4294913122



4293481756

# Triad

The Triadic color harmony groups three colors that are evenly spaced from another and form a triangle on the color wheel.



4294913122



4278426640



4278229247

# Complementary

The Complementary color scheme is a pair of colors which are on the opposite of each other on the color wheel.



4294913122



4281139145

# Split Complementary

Split-complementary colors differ from the complementary color scheme. The scheme consists of three colors, the original color and two neighbors of the complement color.



4278231789



4294913122



4278231908

# Square

The Square scheme is like the rectangle color scheme, but the four colors are evenly spaced on the color wheel.



4294913122



4286418688



4278232494



4278223359

# Rectangle

The Rectangle color scheme consists of four colors that form a rectangle on the color wheel.



4294913122



4291653120



4278232494



4278230271



# Sweetspot

The Sweet Spot groups the original color and five complimentary colors.



4294913122



4294950864



4291243263



4286601571



4278190080



4286611584



# Same Dimension

The Same Dimension uses a secret algorithm to generate beautiful new colors.



4294913122



4294902595



4294925612



4286608246



4290707505



4282384400



# Inverse Universe

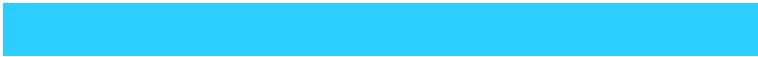
The Inverse Universe completely reimagines the original color for something new.



4294913122



4294902595



4281126655



4286608246



4290707505



4282384400



# Previews

## White Background



This preview shows how the Android color 4294913122 looks on a white background.

## Color Contrast Check

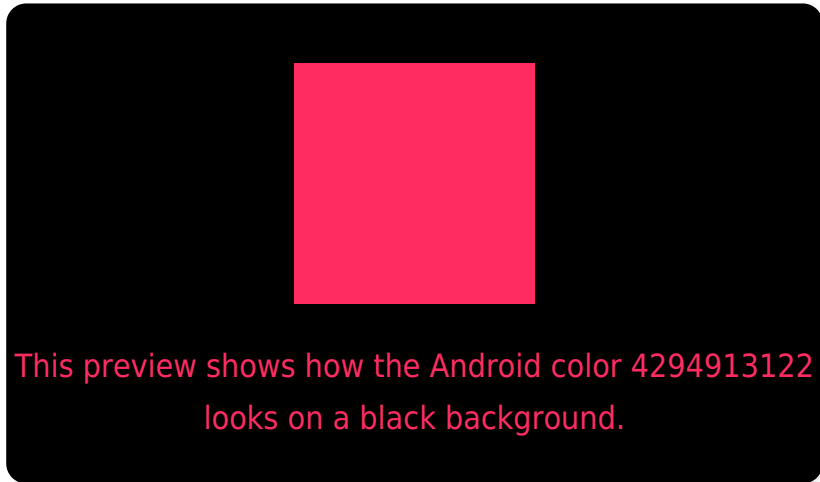
Large Text (above 18pt) WCAG AA ✓ Pass

Any Text WCAG AA ✗ Fail

Large Text (above 18pt) WCAG AAA ✗ Fail

Any Text WCAG AAA ✗ Fail

# Black Background



## Color Contrast Check

Large Text (above 18pt) WCAG AA ✓ Pass

Any Text WCAG AA ✓ Pass

Large Text (above 18pt) WCAG AAA ✓ Pass

Any Text WCAG AAA × Fail

If you want to check with other color combinations, try the [Color Contrast Checker](#).



# Android 4294913122 Background



This preview shows how black text looks on a background with the Android color 4294913122.

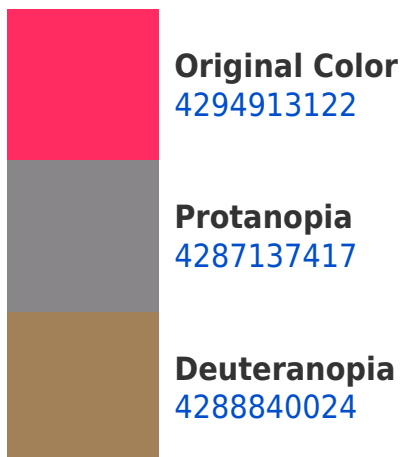


This preview shows how white text looks on a background with the Android color 4294913122.

# Color Blindness Simulation

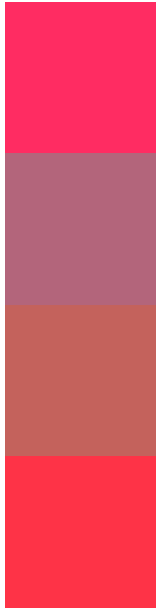
Color vision deficiency is a very complex topic, and I could not describe the different causes any better than Wikipedia does, so if you want to learn more, you should check out their [article about color blindness](#).

## Dichromacy





# Trichromacy



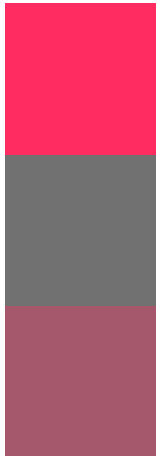
**Original Color**  
4294913122

**Protanomaly**  
4289947003

**Deuteranomaly**  
4291060316

**Tritanomaly**  
4294849351

# Monochromacy



**Original Color**  
4294913122

**Achromatopsia**  
4285624689

**Achromatomaly**  
4289026156

# CSS Examples

## Text

The CSS property to change the color of the text to Android 4294913122 is called "color". The color property can be set on classes, ids or directly on the HTML element.

This example shows how text in the color `rgb(255, 44, 98)` looks like.

```
.text, #text, p{  
    color:rgb(255, 44, 98)  
}
```

If you want to add a text shadow in that color use the text-shadow property, you can generate a text shadow directly with our [CSS Text Shadow Generator](#).

Here you see how black text with a 4 pixel rgb(255, 44, 98) colored shadow looks like.

```
.shadow{ text-shadow: 4px 4px 2px rgb(255, 44, 98) }
```

## Border

The CSS property to change the border of an element to Android 4294913122 is called "border". The border property can be set on classes, ids or directly on the HTML element.

This example shows the color as border, it can be applied via the CSS property "border" or "border-color".

```
.border, #border, table{ border:4px solid rgb(255, 44, 98) }
```

If only the border color should be changed use the property `border-color`.

```
.border{ border-color:rgb(255, 44, 98) }
```

If you want to add a box shadow in that color use:

Here you see how a box with a 4 pixel `rgb(255, 44, 98)` colored shadow looks like.

```
.boxshadow{ -moz-box-shadow:4px 4px 4px  
4px rgb(255, 44, 98); -webkit-box-  
shadow:4px 4px 4px 4px rgb(255, 44, 98);  
box-shadow:4px 4px 4px 4px rgb(255, 44,  
98) }
```

# Background

The CSS property to change the background color of an element to Android 4294913122 is called "background". The background property can be set on classes, ids or directly on the HTML element.

```
.background, #background, body{  
background: rgb(255, 44, 98) }
```

If only the background color should be changed can be used:

```
.background{ background-color: rgb(255, 44,  
98) }
```

This example shows the color as background, it is applied via the CSS property "background".

To optimize and compress your CSS code, you can use our [online CSS compressor and optimizer](#) based on csstidy. If you want to create a linear or radial gradient as background or border, check our [CSS Gradient Generator](#).



Hey! You found this booklet interesting? Support Converting Colors with the new Membership Option!

The pro membership hides all ads, plus gives you double the colors in the color bucket, and more awesome pro features!

**[Learn more, Memberships starting at \\$2.50/m!](#)**

**Follow me  
on Twitter!**

@ConvertingColor