

Converting Colors

Android(4294914408)

Have a look what the booklet for
Android(4294914408) contains.

Android(4294914408)	3
<i>Conversions</i>	4
<i>Details</i>	6
<i>Harmonies</i>	11
<i>Previews</i>	23
<i>Color Blindness Simulation</i>	26
<i>CSS Examples</i>	29

Color

Android(4294914408)

Conversions

Conversions Part 1

Format	Color
Hex	FF3168
RGB	255, 49, 104
RGB Percent	100%, 19%, 41%
CMY	0.0000, 0.8078, 0.5922
CMYK	0.00, 0.81, 0.59, 0.00
HSL	344°, 100%, 60%
HSV	344°, 81%, 100%
XYZ	44.8370, 24.4561, 15.4540
YIQ	116.8640, 105.1210, 60.7770

Conversions

Conversions Part 2

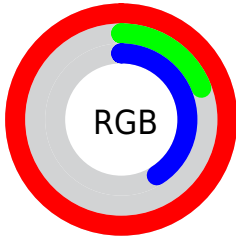
Format	Color
RYB	255, 49, 104
Decimal	16724328
CIELab	56.54, 76.55, 20.75
CIELCh	57, 79.309, 15.164
Yxy	24.4561, 0.5291, 0.2886
Android (android.graphics.Color)	4294914408 (0xFFFF3168)
YUV	116.8640, -6.3420, 121.1453
Hunter-Lab	49.4531, 75.2953, 16.0891

Details

The Android color **4294914408** is a dark color, and the websafe version is hex **FF3366**. The color can be described as middle washed rose. A complement of this color would be **4281466824**, and the grayscale version is **4285887861**.

A 20% lighter version of the original color is **4294931611**, and **4290707514** is the 20% darker color. If you saturate the color by 10%, you get **4294907989**, and if you desaturate by 10%, it is **4294921083**.

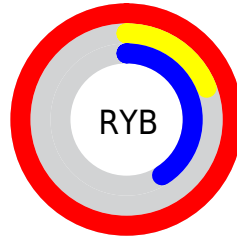
Distribution



Red (100%)

Green (19%)

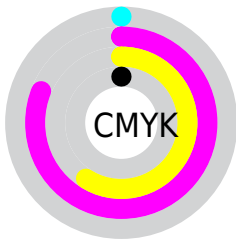
Blue (41%)



Red (100%)

Yellow (19%)

Blue (41%)

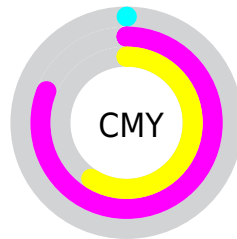


Cyan (0%)

Magenta (81%)

Yellow (59%)

Black (0%)



Cyan (0%)

Magenta (81%)

Yellow (59%)

Brightness & Saturation Gradients

These gradients show how the Android color 4294914408 changes by changing the brightness by 10 percent. The first figure shows a shift by +10% for each color and the second figure -10%.

Similar to the brightness gradients but the following saturation gradients show a change of the Android color 4294914408 by changing the saturation by 10% instead.

 4294914408

 4294914408

4294967295

 4292804688

 4294931611

 4290707514

 4294939573

 4288610341

 4294947281

 4286578705

 4294954989

 4284481538

 4294962687

 4282515459

 4280287233

 4278190080

 4294914408

 4294914408

■ 4294907989

■ 4294921083

■ 4294901828

■ 4294927501

■ 4294934176

■ 4294940595

■ 4294947269

■ 4294953688

■ 4294960363

■ 4294966782

4294967295

Harmonies

Analogous

The Analogous color harmony consists of three colors that are next to each other on the color wheel.



4293933485



4294914408



4293678373

Triad

The Triadic color harmony groups three colors that are evenly spaced from another and form a triangle on the color wheel.



4294914408



4280524047



4278229759

Complementary

The Complementary color scheme is a pair of colors which are on the opposite of each other on the color wheel.



4294914408



4281466824

Split Complementary

Split-complementary colors differ from the complementary color scheme. The scheme consists of three colors, the original color and two neighbors of the complement color.



4278232041



4294914408



4278231906

Square

The Square scheme is like the rectangle color scheme, but the four colors are evenly spaced on the color wheel.



4294914408



4286877440



4278232746



4278224127

Rectangle

The Rectangle color scheme consists of four colors that form a rectangle on the color wheel.



4294914408



4291915264



4278232746



4278230783

Sweetspot

The Sweet Spot groups the original color and five complimentary colors.



4294914408



4294951634



4291113471



4286602084



4278190080



4286611584

Same Dimension

The Same Dimension uses a secret algorithm to generate beautiful new colors.



4294914408



4294903882



4294925873



4286608246



4290707507



4282384401

Inverse Universe

The Inverse Universe completely reimagines the original color for something new.



4294914408



4294903882



4281455359



4286608246



4290707507



4282384401

Previews

White Background



This preview shows how the Android color 4294914408 looks on a white background.

Color Contrast Check

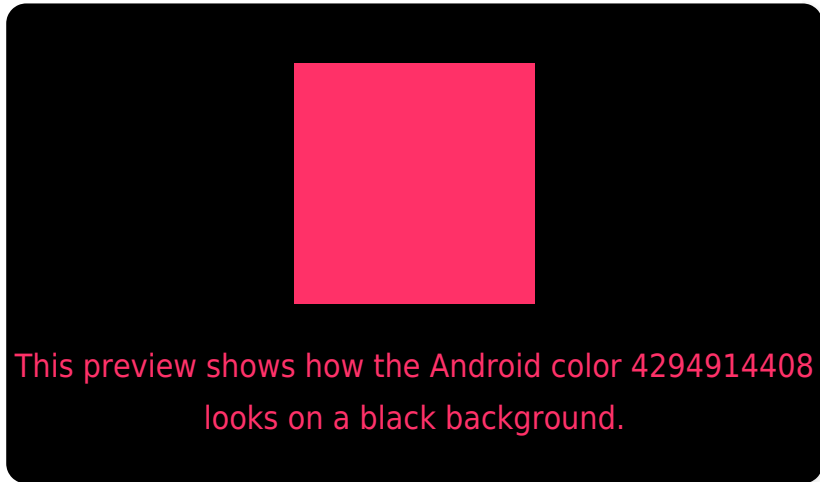
Large Text (above 18pt) WCAG AA ✓ Pass

Any Text WCAG AA ✗ Fail

Large Text (above 18pt) WCAG AAA ✗ Fail

Any Text WCAG AAA ✗ Fail

Black Background



Color Contrast Check

Large Text (above 18pt) WCAG AA ✓ Pass

Any Text WCAG AA ✓ Pass

Large Text (above 18pt) WCAG AAA ✓ Pass

Any Text WCAG AAA × Fail

If you want to check with other color combinations, try the [Color Contrast Checker](#).

Android 4294914408 Background



This preview shows how black text looks on a background with the Android color 4294914408.



This preview shows how white text looks on a background with the Android color 4294914408.

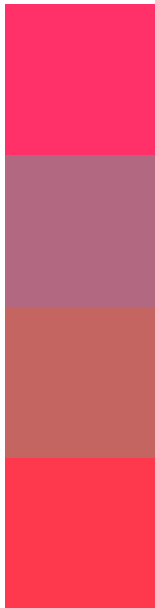
Color Blindness Simulation

Color vision deficiency is a very complex topic, and I could not describe the different causes any better than Wikipedia does, so if you want to learn more, you should check out their [article about color blindness](#).

Dichromacy



Trichromacy



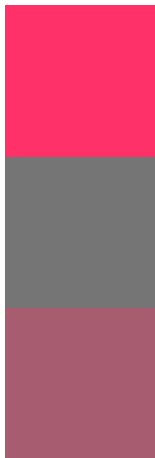
Original Color
4294914408

Protanomaly
4289947777

Deuteranomaly
4291061090

Tritanomaly
4294850637

Monochromacy



Original Color
4294914408

Achromatopsia
4285887861

Achromatomaly
4289158256

CSS Examples

Text

The CSS property to change the color of the text to Android 4294914408 is called "color". The color property can be set on classes, ids or directly on the HTML element.

This example shows how text in the color `rgb(255, 49, 104)` looks like.

```
.text, #text, p{  
    color:rgb(255, 49, 104)  
}
```

If you want to add a text shadow in that color use the text-shadow property, you can generate a text shadow directly with our [CSS Text Shadow Generator](#).

Here you see how black text with a 4 pixel rgb(255, 49, 104) colored shadow looks like.

```
.shadow{ text-shadow: 4px 4px 2px rgb(255, 49, 104) }
```

Border

The CSS property to change the border of an element to Android 4294914408 is called "border". The border property can be set on classes, ids or directly on the HTML element.

This example shows the color as border, it can be applied via the CSS property "border" or "border-color".

```
.border, #border, table{ border:4px solid rgb(255, 49, 104) }
```

If only the border color should be changed use the property `border-color`.

```
.border{ border-color:rgb(255, 49, 104) }
```

If you want to add a box shadow in that color use:

Here you see how a box with a 4 pixel `rgb(255, 49, 104)` colored shadow looks like.

```
.boxshadow{ -moz-box-shadow:4px 4px 4px  
4px rgb(255, 49, 104); -webkit-box-  
shadow:4px 4px 4px 4px rgb(255, 49, 104);  
box-shadow:4px 4px 4px 4px rgb(255, 49,  
104) }
```

Background

The CSS property to change the background color of an element to Android 4294914408 is called "background". The background property can be set on classes, ids or directly on the HTML element.

```
.background, #background, body{  
background: rgb(255, 49, 104) }
```

If only the background color should be changed can be used:

```
.background{ background-color: rgb(255, 49,  
104) }
```

This example shows the color as background, it is applied via the CSS property "background".

To optimize and compress your CSS code, you can use our [online CSS compressor and optimizer](#) based on csstidy. If you want to create a linear or radial gradient as background or border, check our [CSS Gradient Generator](#).

Hey! You found this booklet interesting? Support Converting Colors with the new Membership Option!

The pro membership hides all ads, plus gives you double the colors in the color bucket, and more awesome pro features!

[Learn more, Memberships starting at \\$2.50/m!](#)

**Follow me
on Twitter!**

@ConvertingColor