

Converting Colors

Android(4294914912)

Have a look what the booklet for
Android(4294914912) contains.

Android(4294914912)	3
<i>Conversions</i>	4
<i>Details</i>	6
<i>Harmonies</i>	11
<i>Previews</i>	23
<i>Color Blindness Simulation</i>	26
<i>CSS Examples</i>	29

Color

Android(4294914912)

Conversions

Conversions Part 1

Format	Color
Hex	FF3360
RGB	255, 51, 96
RGB Percent	100%, 20%, 38%
CMY	0.0000, 0.8000, 0.6235
CMYK	0.00, 0.80, 0.62, 0.00
HSL	347°, 100%, 60%
HSV	347°, 80%, 100%
XYZ	44.5351, 24.4722, 13.4427
YIQ	117.1260, 107.1390, 57.2430

Conversions

Conversions Part 2

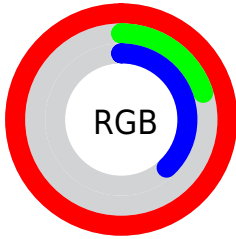
Format	Color
R_{YB}	255, 51, 96
Decimal	16724832
CIE _{Lab}	56.56, 75.60, 25.51
CIE _{LCh}	57, 79.792, 18.646
Yxy	24.4722, 0.5401, 0.2968
Android (android.graphics.Color)	4294914912 (0xFFFF3360)
YUV	117.1260, -10.4151, 120.9155
Hunter-Lab	49.4694, 74.1245, 18.5173

Details

The Android color **4294914912** is a dark color, and the websafe version is hex **FF3366**. The color can be described as middle washed rose. A complement of this color would be **4281597906**, and the grayscale version is **4285887861**.

A 20% lighter version of the original color is **4294931858**, and **4290707506** is the 20% darker color. If you saturate the color by 10%, you get **4294908236**, and if you desaturate by 10%, it is **4294921588**.

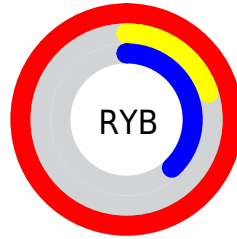
Distribution



Red (100%)

Green (20%)

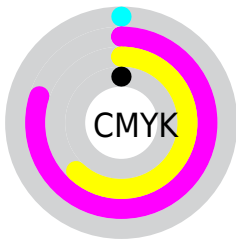
Blue (38%)



Red (100%)

Yellow (20%)

Blue (38%)

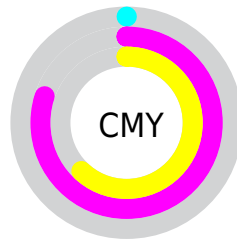


Cyan (0%)

Magenta (80%)

Yellow (62%)

Black (0%)



Cyan (0%)

Magenta (80%)

Yellow (62%)

Brightness & Saturation Gradients

These gradients show how the Android color 4294914912 changes by changing the brightness by 10 percent. The first figure shows a shift by +10% for each color and the second figure -10%.

Similar to the brightness gradients but the following saturation gradients show a change of the Android color 4294914912 by changing the saturation by 10% instead.



4294914912



4294914912

4294967295



4292804681



4294931858



4290707506



4294939565



4288610334



4294947272



4286513159



4294954980



4284481538



4294962943



4282515459



4280221697



4278190080



4294914912



4294914912

■ 4294908236

■ 4294921588

■ 4294901816

■ 4294928008

■ 4294934684

■ 4294941104

■ 4294947779

■ 4294954199

■ 4294960875

4294967295

Harmonies

Analogous

The Analogous color harmony consists of three colors that are next to each other on the color wheel.



4294194341



4294914912



4293417242

Triad

The Triadic color harmony groups three colors that are evenly spaced from another and form a triangle on the color wheel.



4294914912



4278230556



4278229247

Complementary

The Complementary color scheme is a pair of colors which are on the opposite of each other on the color wheel.



4294914912



4281597906

Split Complementary

Split-complementary colors differ from the complementary color scheme. The scheme consists of three colors, the original color and two neighbors of the complement color.



4278232048



4294914912



4278232170

Square

The Square scheme is like the rectangle color scheme, but the four colors are evenly spaced on the color wheel.



4294914912



4286288128



4278232754



4281303551

Rectangle

The Rectangle color scheme consists of four colors that form a rectangle on the color wheel.



4294914912



4291522816



4278232754



4278230527

Sweetspot

The Sweet Spot groups the original color and five complimentary colors.



4294914912



4294951631



4291769343



4286602083



4278190080



4286611584

Same Dimension

The Same Dimension uses a secret algorithm to generate beautiful new colors.



4294914912



4294904384



4294928691



4286608246



4290707498



4282384398

Inverse Universe

The Inverse Universe completely reimagines the original color for something new.



4294914912



4294904384



4281584127



4286608246



4290707498



4282384398

Previews

White Background



This preview shows how the Android color 4294914912 looks on a white background.

Color Contrast Check

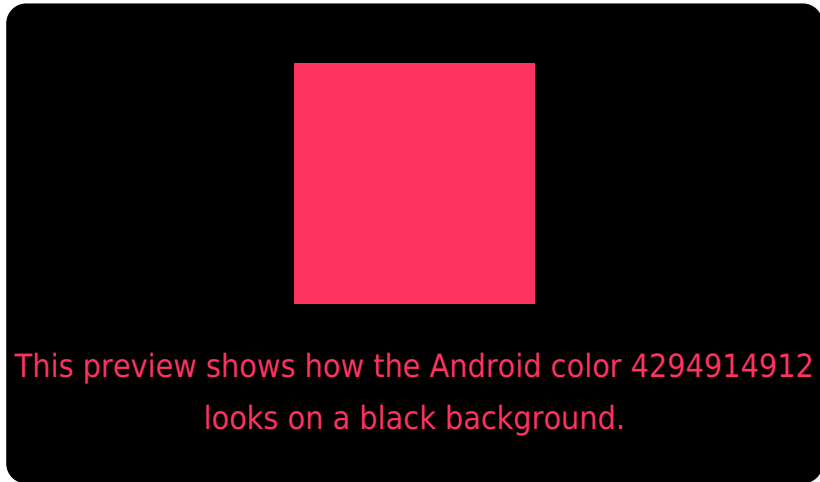
Large Text (above 18pt) WCAG AA ✓ Pass

Any Text WCAG AA ✗ Fail

Large Text (above 18pt) WCAG AAA ✗ Fail

Any Text WCAG AAA ✗ Fail

Black Background



Color Contrast Check

Large Text (above 18pt) WCAG AA ✓ Pass

Any Text WCAG AA ✓ Pass

Large Text (above 18pt) WCAG AAA ✓ Pass

Any Text WCAG AAA × Fail

If you want to check with other color combinations, try the [Color Contrast Checker](#).

Android 4294914912 Background



This preview shows how black text looks on a background with the Android color 4294914912.

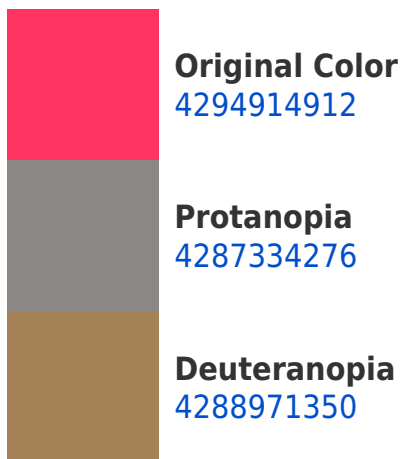


This preview shows how white text looks on a background with the Android color 4294914912.

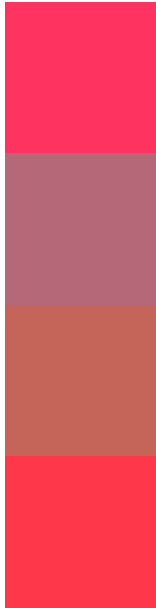
Color Blindness Simulation

Color vision deficiency is a very complex topic, and I could not describe the different causes any better than Wikipedia does, so if you want to learn more, you should check out their [article about color blindness](#).

Dichromacy



Trichromacy



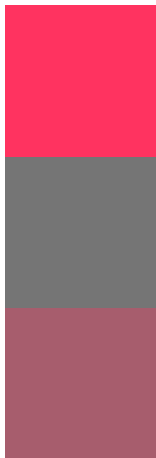
Original Color
4294914912

Protanomaly
4290078839

Deuteranomaly
4291126618

Tritanomaly
4294850634

Monochromacy



Original Color
4294914912

Achromatopsia
4285887861

Achromatomaly
4289158509

CSS Examples

Text

The CSS property to change the color of the text to Android 4294914912 is called "color". The color property can be set on classes, ids or directly on the HTML element.

This example shows how text in the color `rgb(255, 51, 96)` looks like.

```
.text, #text, p{  
    color:rgb(255, 51, 96)  
}
```

If you want to add a text shadow in that color use the text-shadow property, you can generate a text shadow directly with our [CSS Text Shadow Generator](#).

Here you see how black text with a 4 pixel rgb(255, 51, 96) colored shadow looks like.

```
.shadow{ text-shadow: 4px 4px 2px rgb(255, 51, 96) }
```

Border

The CSS property to change the border of an element to Android 4294914912 is called "border". The border property can be set on classes, ids or directly on the HTML element.

This example shows the color as border, it can be applied via the CSS property "border" or "border-color".

```
.border, #border, table{ border:4px solid rgb(255, 51, 96) }
```

If only the border color should be changed use the property `border-color`.

```
.border{ border-color:rgb(255, 51, 96) }
```

If you want to add a box shadow in that color use:

Here you see how a box with a 4 pixel `rgb(255, 51, 96)` colored shadow looks like.

```
.boxshadow{ -moz-box-shadow:4px 4px 4px  
4px rgb(255, 51, 96); -webkit-box-  
shadow:4px 4px 4px 4px rgb(255, 51, 96);  
box-shadow:4px 4px 4px 4px rgb(255, 51,  
96) }
```

Background

The CSS property to change the background color of an element to Android 4294914912 is called "background". The background property can be set on classes, ids or directly on the HTML element.

```
.background, #background, body{  
background: rgb(255, 51, 96) }
```

If only the background color should be changed can be used:

```
.background{ background-color: rgb(255, 51,  
96) }
```

This example shows the color as background, it is applied via the CSS property "background".

To optimize and compress your CSS code, you can use our [online CSS compressor and optimizer](#) based on csstidy. If you want to create a linear or radial gradient as background or border, check our [CSS Gradient Generator](#).

Hey! You found this booklet interesting? Support Converting Colors with the new Membership Option!

The pro membership hides all ads, plus gives you double the colors in the color bucket, and more awesome pro features!

[Learn more, Memberships starting at \\$2.50/m!](#)

**Follow me
on Twitter!**

@ConvertingColor