

# Converting Colors

Android(4294915436)

Have a look what the booklet for  
Android(4294915436) contains.

|  |    |
|--|----|
| <b>Android(4294915436)</b> .....               | 3  |
| <i><b>Conversions</b></i> .....                | 4  |
| <i><b>Details</b></i> .....                    | 6  |
| <i><b>Harmonies</b></i> .....                  | 11 |
| <i><b>Previews</b></i> .....                   | 23 |
| <i><b>Color Blindness Simulation</b></i> ..... | 26 |
| <i><b>CSS Examples</b></i> .....               | 29 |

**Color**

**Android(4294915436)**

# Conversions

## Conversions Part 1

| Format      | Color                       |
|-------------|-----------------------------|
| Hex         | FF356C                      |
| RGB         | 255, 53, 108                |
| RGB Percent | 100%, 21%, 42%              |
| CMY         | 0.0000, 0.7922, 0.5765      |
| CMYK        | 0.00, 0.79, 0.58, 0.00      |
| HSL         | 344°, 100%, 60%             |
| HSV         | 344°, 79%, 100%             |
| XYZ         | 45.2199, 24.8889, 16.6080   |
| YIQ         | 119.6680, 102.7370, 59.9290 |

# Conversions

## Conversions Part 2

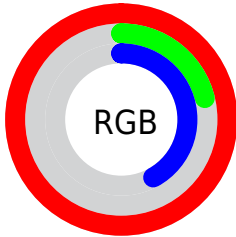
| <b>Format</b>                       | <b>Color</b>                   |
|-------------------------------------|--------------------------------|
| <b>R<sub>YB</sub></b>               | 255, 53, 108                   |
| Decimal                             | 16725356                       |
| CIE <sub>Lab</sub>                  | 56.97, 75.82, 18.94            |
| CIE <sub>LCh</sub>                  | 57, 78.150, 14.029             |
| Yxy                                 | 24.8889, 0.5215,<br>0.2870     |
| Android<br>(android.graphics.Color) | 4294915436<br>(0xFFFF356C)     |
| YUV                                 | 119.6680, -5.7523,<br>118.6862 |
| Hunter-Lab                          | 49.8888, 74.4894,<br>15.1844   |

# Details

The Android color **4294915436** is a dark color, and the websafe version is hex **FF3366**. The color can be described as middle washed rose. A complement of this color would be **4281728968**, and the grayscale version is **4286085240**.

A 20% lighter version of the original color is **4294932383**, and **4290707517** is the 20% darker color. If you saturate the color by 10%, you get **4294908761**, and if you desaturate by 10%, it is **4294922111**.

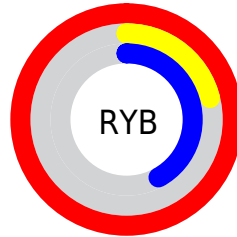
# Distribution



Red (100%)

Green (21%)

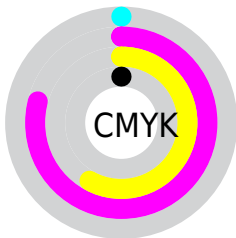
Blue (42%)



Red (100%)

Yellow (21%)

Blue (42%)

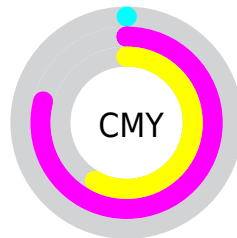


Cyan (0%)

Magenta (79%)

Yellow (58%)

Black (0%)



Cyan (0%)

Magenta (79%)

Yellow (58%)

# Brightness & Saturation Gradients

These gradients show how the Android color 4294915436 changes by changing the brightness by 10 percent. The first figure shows a shift by +10% for each color and the second figure -10%.

Similar to the brightness gradients but the following saturation gradients show a change of the Android color 4294915436 by changing the saturation by 10% instead.



 4294915436

 4294915436

4294967295

 4292804692

 4294932383

 4290707517

 4294940090

 4288610344

 4294947798

 4286578709

 4294955506

 4284547074

 4294963199

 4282580995

 4280352769

 4278190080

 4294915436

 4294915436

■ 4294908761

■ 4294922111

■ 4294902343

■ 4294928529

■ 4294901829

■ 4294935204

■ 4294941622

■ 4294948041

■ 4294954715

■ 4294961390

4294967295

# Harmonies

## Analogous

The Analogous color harmony consists of three colors that are next to each other on the color wheel.



4293803952



4294915436



4293744170

# Triad

The Triadic color harmony groups three colors that are evenly spaced from another and form a triangle on the color wheel.



4294915436



4281310480



4278230015

# Complementary

The Complementary color scheme is a pair of colors which are on the opposite of each other on the color wheel.



4294915436



4281728968

# Split Complementary

Split-complementary colors differ from the complementary color scheme. The scheme consists of three colors, the original color and two neighbors of the complement color.



4278232295



4294915436



4278232161

# Square

The Square scheme is like the rectangle color scheme, but the four colors are evenly spaced on the color wheel.



4294915436



4287139840



4278232744



4278224639

# Rectangle

The Rectangle color scheme consists of four colors that form a rectangle on the color wheel.



4294915436



4292046336



4278232744



4278231039



# Sweetspot

The Sweet Spot groups the original color and five complimentary colors.



4294915436



4294951634



4291180031



4286602085



4278190080



4286611584



# Same Dimension

The Same Dimension uses a secret algorithm to generate beautiful new colors.



4294915436



4294905167



4294926645



4286608246



4290707508



4282384401



# Inverse Universe

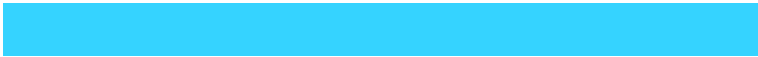
The Inverse Universe completely reimagines the original color for something new.



4294915436



4294905167



4281717759



4286608246



4290707508



4282384401



# Previews

## White Background



This preview shows how the Android color 4294915436 looks on a white background.

## Color Contrast Check

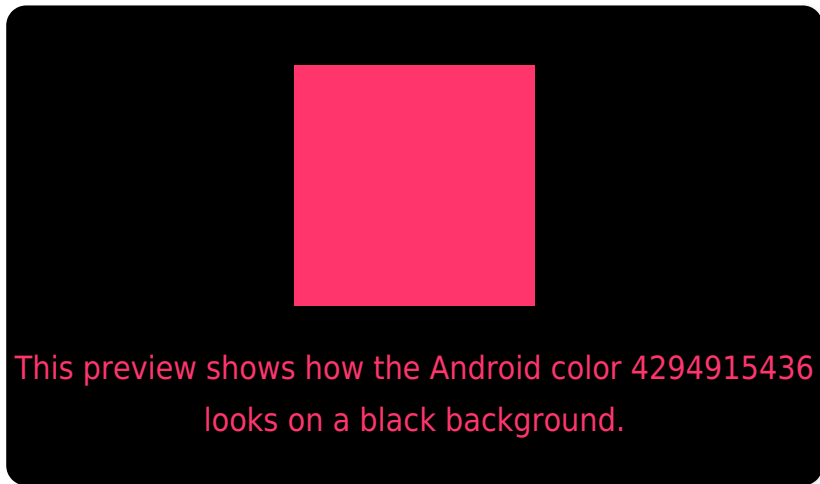
Large Text (above 18pt) WCAG AA ✓ Pass

Any Text WCAG AA ✗ Fail

Large Text (above 18pt) WCAG AAA ✗ Fail

Any Text WCAG AAA ✗ Fail

# Black Background



## Color Contrast Check

Large Text (above 18pt) WCAG AA ✓ Pass

Any Text WCAG AA ✓ Pass

Large Text (above 18pt) WCAG AAA ✓ Pass

Any Text WCAG AAA × Fail

If you want to check with other color combinations, try the [Color Contrast Checker](#).



# Android 4294915436 Background



This preview shows how black text looks on a background with the Android color 4294915436.

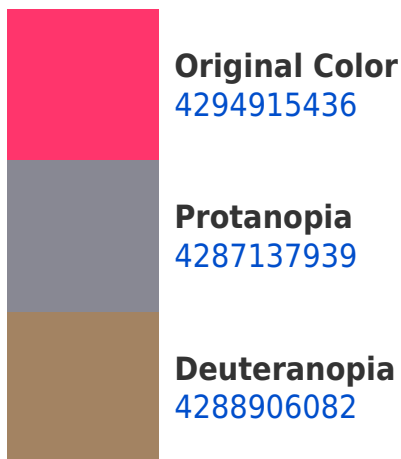


This preview shows how white text looks on a background with the Android color 4294915436.

# Color Blindness Simulation

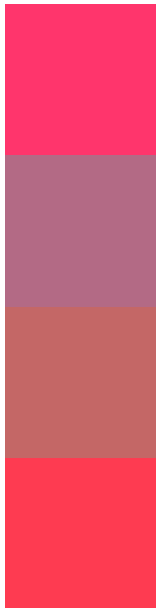
Color vision deficiency is a very complex topic, and I could not describe the different causes any better than Wikipedia does, so if you want to learn more, you should check out their [article about color blindness](#).

## Dichromacy





# Trichromacy



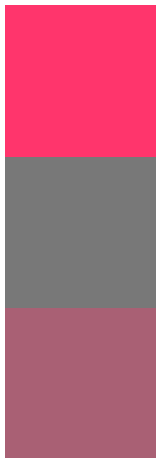
**Original Color**  
4294915436

**Protanomaly**  
4289948293

**Deuteranomaly**  
4291061606

**Tritanomaly**  
4294851409

# Monochromacy



**Original Color**  
4294915436

**Achromatopsia**  
4286085240

**Achromatomaly**  
4289290356

# CSS Examples

## Text

The CSS property to change the color of the text to Android 4294915436 is called "color". The color property can be set on classes, ids or directly on the HTML element.

This example shows how text in the color `rgb(255, 53, 108)` looks like.

```
.text, #text, p{  
  color:rgb(255, 53, 108)  
}
```

If you want to add a text shadow in that color use the text-shadow property, you can generate a text shadow directly with our [CSS Text Shadow Generator](#).

Here you see how black text with a 4 pixel rgb(255, 53, 108) colored shadow looks like.

```
.shadow{ text-shadow: 4px 4px 2px rgb(255, 53, 108) }
```

## Border

The CSS property to change the border of an element to Android 4294915436 is called "border". The border property can be set on classes, ids or directly on the HTML element.

This example shows the color as border, it can be applied via the CSS property "border" or "border-color".

```
.border, #border, table{ border:4px solid rgb(255, 53, 108) }
```

If only the border color should be changed use the property `border-color`.

```
.border{ border-color:rgb(255, 53, 108) }
```

If you want to add a box shadow in that color use:

Here you see how a box with a 4 pixel `rgb(255, 53, 108)` colored shadow looks like.

```
.boxshadow{ -moz-box-shadow:4px 4px 4px  
4px rgb(255, 53, 108); -webkit-box-  
shadow:4px 4px 4px 4px rgb(255, 53, 108);  
box-shadow:4px 4px 4px 4px rgb(255, 53,  
108) }
```

# Background

The CSS property to change the background color of an element to Android 4294915436 is called "background". The background property can be set on classes, ids or directly on the HTML element.

```
.background, #background, body{  
background: rgb(255, 53, 108) }
```

If only the background color should be changed can be used:

```
.background{ background-color: rgb(255, 53,  
108) }
```

This example shows the color as background, it is applied via the CSS property "background".

To optimize and compress your CSS code, you can use our [online CSS compressor and optimizer](#) based on csstidy. If you want to create a linear or radial gradient as background or border, check our [CSS Gradient Generator](#).



Hey! You found this booklet interesting? Support Converting Colors with the new Membership Option!

The pro membership hides all ads, plus gives you double the colors in the color bucket, and more awesome pro features!

**[Learn more, Memberships starting at \\$2.50/m!](#)**

**Follow me  
on Twitter!**

@ConvertingColor