

Converting Colors

Android(4294916206)

Have a look what the booklet for
Android(4294916206) contains.

Android(4294916206)	3
<i>Conversions</i>	4
<i>Details</i>	6
<i>Harmonies</i>	11
<i>Previews</i>	23
<i>Color Blindness Simulation</i>	26
<i>CSS Examples</i>	29

Color

Android(4294916206)

Conversions

Conversions Part 1

Format	Color
Hex	FF386E
RGB	255, 56, 110
RGB Percent	100%, 22%, 43%
CMY	0.0000, 0.7804, 0.5686
CMYK	0.00, 0.78, 0.57, 0.00
HSL	344°, 100%, 61%
HSV	344°, 78%, 100%
XYZ	45.4686, 25.2141, 17.2222
YIQ	121.6570, 101.2700, 58.9820

Conversions

Conversions Part 2

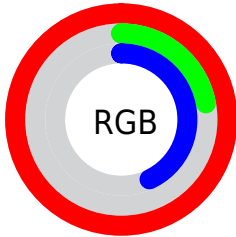
Format	Color
R_{YB}	255, 56, 110
Decimal	16726126
CIE _{Lab}	57.28, 75.17, 18.19
CIE _{LCh}	57, 77.338, 13.603
Yxy	25.2141, 0.5172, 0.2868
Android (android.graphics.Color)	4294916206 (0xFFFF386E)
YUV	121.6570, -5.7469, 116.9418
Hunter-Lab	50.2137, 73.7584, 14.8144

Details

The Android color **4294916206** is a dark color, and the websafe version is hex **FF3366**. The color can be described as middle washed rose. A complement of this color would be **4281925577**, and the grayscale version is **4286216826**.

A 20% lighter version of the original color is **4294932897**, and **4290707519** is the 20% darker color. If you saturate the color by 10%, you get **4294909531**, and if you desaturate by 10%, it is **4294922881**.

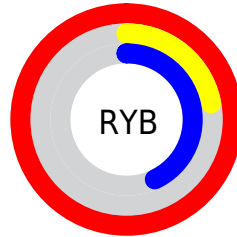
Distribution



Red (100%)

Green (22%)

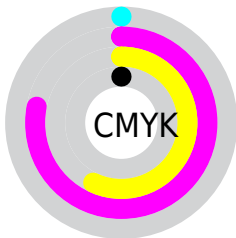
Blue (43%)



Red (100%)

Yellow (22%)

Blue (43%)

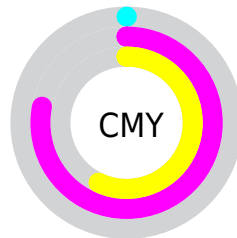


Cyan (0%)

Magenta (78%)

Yellow (57%)

Black (0%)



Cyan (0%)

Magenta (78%)

Yellow (57%)

Brightness & Saturation Gradients

These gradients show how the Android color 4294916206 changes by changing the brightness by 10 percent. The first figure shows a shift by +10% for each color and the second figure -10%.

Similar to the brightness gradients but the following saturation gradients show a change of the Android color 4294916206 by changing the saturation by 10% instead.

 4294916206

 4294916206

4294967295

 4292804694

 4294932897

 4290707519

 4294940604

 4288675882

 4294948312

 4286578710

 4294956020

 4284612610

 4294963711

 4282646531

 4280418305

 4278190080

 4294916206

 4294916206

■ 4294909531

■ 4294922881

■ 4294903113

■ 4294929299

■ 4294901829

■ 4294935718

■ 4294942392

■ 4294948811

■ 4294955485

■ 4294962160

4294967295

Harmonies

Analogous

The Analogous color harmony consists of three colors that are next to each other on the color wheel.



4293804721



4294916206



4293809965

Triad

The Triadic color harmony groups three colors that are evenly spaced from another and form a triangle on the color wheel.



4294916206



4281638419



4278230271

Complementary

The Complementary color scheme is a pair of colors which are on the opposite of each other on the color wheel.



4294916206



4281925577

Split Complementary

Split-complementary colors differ from the complementary color scheme. The scheme consists of three colors, the original color and two neighbors of the complement color.



4278232550



4294916206



4278232417

Square

The Square scheme is like the rectangle color scheme, but the four colors are evenly spaced on the color wheel.



4294916206



4287270912



4278232999



4278225151

Rectangle

The Rectangle color scheme consists of four colors that form a rectangle on the color wheel.



4294916206



4292111872



4278232999



4278231295

Sweetspot

The Sweet Spot groups the original color and five complimentary colors.



4294916206



4294952148



4291246335



4286602341



4278190080



4286611584

Same Dimension

The Same Dimension uses a secret algorithm to generate beautiful new colors.



4294916206



4294905680



4294927160



4286608246



4290707508



4282384401

Inverse Universe

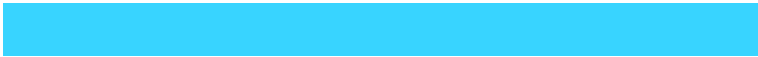
The Inverse Universe completely reimagines the original color for something new.



4294916206



4294905680



4281914623



4286608246



4290707508



4282384401

Previews

White Background



This preview shows how the Android color 4294916206 looks on a white background.

Color Contrast Check

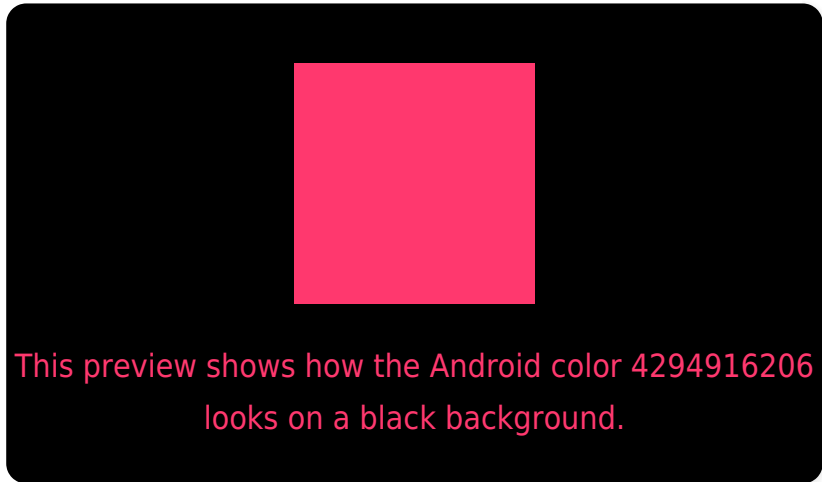
Large Text (above 18pt) WCAG AA ✓ Pass

Any Text WCAG AA ✗ Fail

Large Text (above 18pt) WCAG AAA ✗ Fail

Any Text WCAG AAA ✗ Fail

Black Background



Color Contrast Check

Large Text (above 18pt) WCAG AA ✓ Pass

Any Text WCAG AA ✓ Pass

Large Text (above 18pt) WCAG AAA ✓ Pass

Any Text WCAG AAA × Fail

If you want to check with other color combinations, try the [Color Contrast Checker](#).

Android 4294916206 Background



This preview shows how black text looks on a background with the Android color 4294916206.



This preview shows how white text looks on a background with the Android color 4294916206.

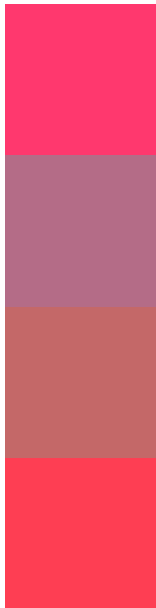
Color Blindness Simulation

Color vision deficiency is a very complex topic, and I could not describe the different causes any better than Wikipedia does, so if you want to learn more, you should check out their [article about color blindness](#).

Dichromacy



Trichromacy



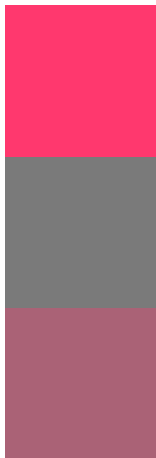
Original Color
4294916206

Protanomaly
4290014343

Deuteranomaly
4291061864

Tritanomaly
4294852179

Monochromacy



Original Color
4294916206

Achromatopsia
4286216826

Achromatomaly
4289356406

CSS Examples

Text

The CSS property to change the color of the text to Android 4294916206 is called "color". The color property can be set on classes, ids or directly on the HTML element.

This example shows how text in the color `rgb(255, 56, 110)` looks like.

```
.text, #text, p{  
    color:rgb(255, 56, 110)  
}
```

If you want to add a text shadow in that color use the text-shadow property, you can generate a text shadow directly with our [CSS Text Shadow Generator](#).

Here you see how black text with a 4 pixel rgb(255, 56, 110) colored shadow looks like.

```
.shadow{ text-shadow: 4px 4px 2px rgb(255, 56, 110) }
```

Border

The CSS property to change the border of an element to Android 4294916206 is called "border". The border property can be set on classes, ids or directly on the HTML element.

This example shows the color as border, it can be applied via the CSS property "border" or "border-color".

```
.border, #border, table{ border:4px solid rgb(255, 56, 110) }
```

If only the border color should be changed use the property `border-color`.

```
.border{ border-color:rgb(255, 56, 110) }
```

If you want to add a box shadow in that color use:

Here you see how a box with a 4 pixel `rgb(255, 56, 110)` colored shadow looks like.

```
.boxshadow{ -moz-box-shadow:4px 4px 4px  
4px rgb(255, 56, 110); -webkit-box-  
shadow:4px 4px 4px 4px rgb(255, 56, 110);  
box-shadow:4px 4px 4px 4px rgb(255, 56,  
110) }
```

Background

The CSS property to change the background color of an element to Android 4294916206 is called "background". The background property can be set on classes, ids or directly on the HTML element.

```
.background, #background, body{  
background: rgb(255, 56, 110) }
```

If only the background color should be changed can be used:

```
.background{ background-color: rgb(255, 56,  
110) }
```

This example shows the color as background, it is applied via the CSS property "background".

To optimize and compress your CSS code, you can use our [online CSS compressor and optimizer](#) based on csstidy. If you want to create a linear or radial gradient as background or border, check our [CSS Gradient Generator](#).

Hey! You found this booklet interesting? Support Converting Colors with the new Membership Option!

The pro membership hides all ads, plus gives you double the colors in the color bucket, and more awesome pro features!

[Learn more, Memberships starting at \\$2.50/m!](#)

**Follow me
on Twitter!**

@ConvertingColor