

# Converting Colors

Android(4294916981)

Have a look what the booklet for  
Android(4294916981) contains.

<b>Android(4294916981)</b> .....	3
<i><b>Conversions</b></i> .....	4
<i><b>Details</b></i> .....	6
<i><b>Harmonies</b></i> .....	11
<i><b>Previews</b></i> .....	23
<i><b>Color Blindness Simulation</b></i> .....	26
<i><b>CSS Examples</b></i> .....	29

# Color

**Android(4294916981)**

# Conversions

## Conversions Part 1

Format	Color
Hex	FF3B75
RGB	255, 59, 117
RGB Percent	100%, 23%, 46%
CMY	0.0000, 0.7686, 0.5412
CMYK	0.00, 0.77, 0.54, 0.00
HSL	342°, 100%, 62%
HSV	342°, 77%, 100%
XYZ	46.0149, 25.6723, 19.3596
YIQ	124.2160, 98.1980, 59.5900

# Conversions

## Conversions Part 2

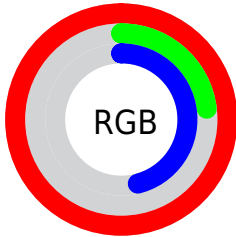
<b>Format</b>	<b>Color</b>
<b>R<sub>YB</sub></b>	255, 59, 117
Decimal	16726901
CIE <sub>Lab</sub>	57.72, 74.83, 14.65
CIE <sub>LCh</sub>	58, 76.247, 11.077
Yxy	25.6723, 0.5054, 0.2820
Android (android.graphics.Color)	4294916981 (0xFFFF3B75)
YUV	124.2160, -3.5575, 114.6976
Hunter-Lab	50.6678, 73.4391, 12.8134

# Details

The Android color **4294916981** is a dark color, and the websafe version is hex **FF3366**. The color can be described as middle washed rose. A complement of this color would be **4282122181**, and the grayscale version is **4286348412**.

A 20% lighter version of the original color is **4294933417**, and **4290707525** is the 20% darker color. If you saturate the color by 10%, you get **4294910307**, and if you desaturate by 10%, it is **4294923655**.

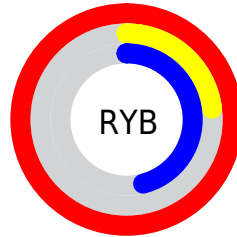
# Distribution



Red (100%)

Green (23%)

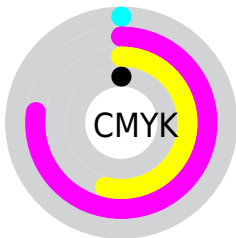
Blue (46%)



Red (100%)

Yellow (23%)

Blue (46%)

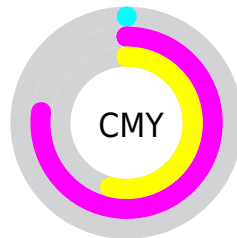


Cyan (0%)

Magenta (77%)

Yellow (54%)

Black (0%)



Cyan (0%)

Magenta (77%)

Yellow (54%)

# Brightness & Saturation Gradients

These gradients show how the Android color 4294916981 changes by changing the brightness by 10 percent. The first figure shows a shift by +10% for each color and the second figure -10%.

Similar to the brightness gradients but the following saturation gradients show a change of the Android color 4294916981 by changing the saturation by 10% instead.





4294916981



4294916981

4294967295



4292805725



4294933417



4290707525



4294941124



4288675888



4294948832



4286644252



4294956540



4284678146



4294964223



4282712067



4280549377



4278190080



4294916981



4294916981

■ 4294910307

■ 4294923655

■ 4294903889

■ 4294930073

■ 4294901835

■ 4294936747

■ 4294943165

■ 4294949839

■ 4294956257

■ 4294962931

4294967295

# Harmonies

## Analogous

The Analogous color harmony consists of three colors that are next to each other on the color wheel.



4293609655



4294916981



4294006581

# Triad

The Triadic color harmony groups three colors that are evenly spaced from another and form a triangle on the color wheel.



4294916981



4282555918



4278230783

# Complementary

The Complementary color scheme is a pair of colors which are on the opposite of each other on the color wheel.



4294916981



4282122181

# Split Complementary

Split-complementary colors differ from the complementary color scheme. The scheme consists of three colors, the original color and two neighbors of the complement color.



4278232801



4294916981



4278232413

# Square

The Square scheme is like the rectangle color scheme, but the four colors are evenly spaced on the color wheel.



4294916981



4287729664



4278233250



4278225919

# Rectangle

The Rectangle color scheme consists of four colors that form a rectangle on the color wheel.



4294916981



4292373760



4278233250



4278231807



# Sweetspot

The Sweet Spot groups the original color and five complimentary colors.



4294916981



4294952150



4291050495



4286602342



4278190080



4286611584



# Same Dimension

The Same Dimension uses a secret algorithm to generate beautiful new colors.



4294916981



4294906970



4294926907



4286608247



4290707513



4282384403



# Inverse Universe

The Inverse Universe completely reimagines the original color for something new.



4294916981



4294906970



4282112255



4286608247



4290707513



4282384403



# Previews

## White Background



This preview shows how the Android color 4294916981 looks on a white background.

## Color Contrast Check

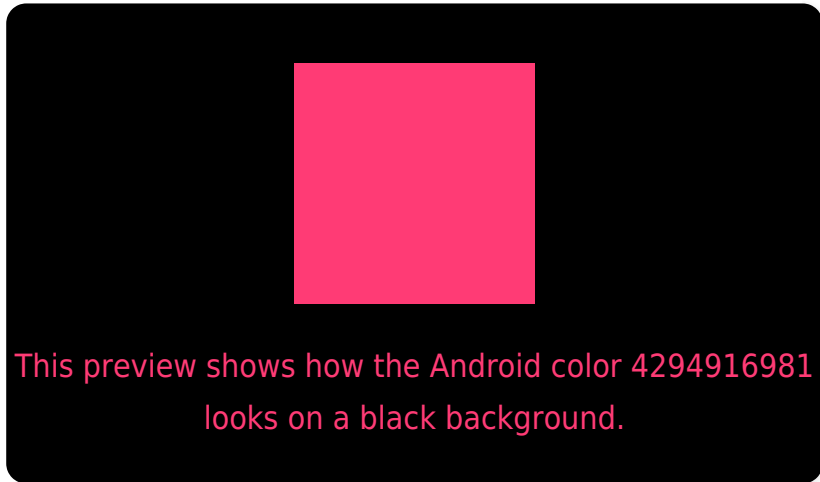
Large Text (above 18pt) WCAG AA ✓ Pass

Any Text WCAG AA ✗ Fail

Large Text (above 18pt) WCAG AAA ✗ Fail

Any Text WCAG AAA ✗ Fail

# Black Background



## Color Contrast Check

Large Text (above 18pt) WCAG AA ✓ Pass

Any Text WCAG AA ✓ Pass

Large Text (above 18pt) WCAG AAA ✓ Pass

Any Text WCAG AAA × Fail

If you want to check with other color combinations, try the [Color Contrast Checker](#).



# Android 4294916981 Background



This preview shows how black text looks on a background with the Android color 4294916981.



This preview shows how white text looks on a background with the Android color 4294916981.

# Color Blindness Simulation

Color vision deficiency is a very complex topic, and I could not describe the different causes any better than Wikipedia does, so if you want to learn more, you should check out their [article about color blindness](#).

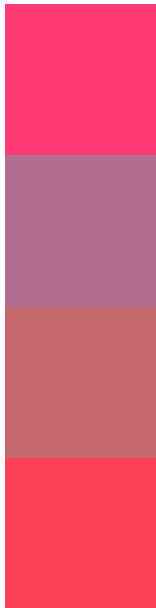
## Dichromacy





**Tritanopia**  
4294788681

# Trichromacy



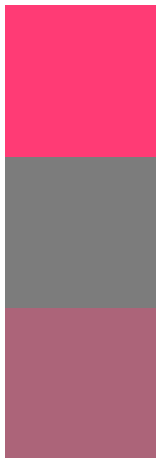
**Original Color**  
4294916981

**Protanomaly**  
4289949070

**Deuteranomaly**  
4291062383

**Tritanomaly**  
4294853209

# Monochromacy



**Original Color**  
4294916981

**Achromatopsia**  
4286348412

**Achromatomaly**  
4289487993

# CSS Examples

## Text

The CSS property to change the color of the text to Android 4294916981 is called "color". The color property can be set on classes, ids or directly on the HTML element.

This example shows how text in the color `rgb(255, 59, 117)` looks like.

```
.text, #text, p{  
    color:rgb(255, 59, 117)  
}
```

If you want to add a text shadow in that color use the text-shadow property, you can generate a text shadow directly with our [CSS Text Shadow Generator](#).

Here you see how black text with a 4 pixel rgb(255, 59, 117) colored shadow looks like.

```
.shadow{ text-shadow: 4px 4px 2px rgb(255, 59, 117) }
```

## Border

The CSS property to change the border of an element to Android 4294916981 is called "border". The border property can be set on classes, ids or directly on the HTML element.

This example shows the color as border, it can be applied via the CSS property "border" or "border-color".

```
.border, #border, table{ border:4px solid rgb(255, 59, 117) }
```

If only the border color should be changed use the property `border-color`.

```
.border{ border-color:rgb(255, 59, 117) }
```

If you want to add a box shadow in that color use:

Here you see how a box with a 4 pixel `rgb(255, 59, 117)` colored shadow looks like.

```
.boxshadow{ -moz-box-shadow:4px 4px 4px 4px rgb(255, 59, 117); -webkit-box-shadow:4px 4px 4px 4px rgb(255, 59, 117); box-shadow:4px 4px 4px 4px rgb(255, 59, 117) }
```

# Background

The CSS property to change the background color of an element to Android 4294916981 is called "background". The background property can be set on classes, ids or directly on the HTML element.

```
.background, #background, body{  
background: rgb(255, 59, 117) }
```

If only the background color should be changed can be used:

```
.background{ background-color: rgb(255, 59,  
117) }
```

This example shows the color as background, it is applied via the CSS property "background".

To optimize and compress your CSS code, you can use our [online CSS compressor and optimizer](#) based on csstidy. If you want to create a linear or radial gradient as background or border, check our [CSS Gradient Generator](#).



Hey! You found this booklet interesting? Support Converting Colors with the new Membership Option!

The pro membership hides all ads, plus gives you double the colors in the color bucket, and more awesome pro features!

**[Learn more, Memberships starting at \\$2.50/m!](#)**

**Follow me  
on Twitter!**

@ConvertingColor