

# Converting Colors

Android(4294917488)

Have a look what the booklet for  
Android(4294917488) contains.

<b>Android(4294917488)</b> .....	3
<i><b>Conversions</b></i> .....	4
<i><b>Details</b></i> .....	6
<i><b>Harmonies</b></i> .....	11
<i><b>Previews</b></i> .....	23
<i><b>Color Blindness Simulation</b></i> .....	26
<i><b>CSS Examples</b></i> .....	29

**Color**

**Android(4294917488)**

# Conversions

## Conversions Part 1

<b>Format</b>	<b>Color</b>
Hex	FF3D70
RGB	255, 61, 112
RGB Percent	100%, 24%, 44%
CMY	0.0000, 0.7608, 0.5608
CMYK	0.00, 0.76, 0.56, 0.00
HSL	344°, 100%, 62%
HSV	344°, 76%, 100%
XYZ	45.8334, 25.7673, 17.8871
YIQ	124.8200, 99.2530, 56.9890

# Conversions

## Conversions Part 2

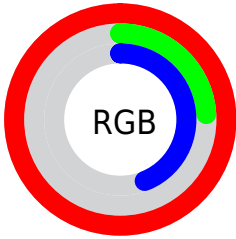
<b>Format</b>	<b>Color</b>
<b>R<sub>YB</sub></b>	255, 61, 112
Decimal	16727408
CIE <sub>Lab</sub>	57.82, 73.92, 17.73
CIE <sub>LCh</sub>	58, 76.015, 13.490
Yxy	25.7673, 0.5122, 0.2879
Android (android.graphics.Color)	4294917488 (0xFFFF3D70)
YUV	124.8200, -6.3203, 114.1679
Hunter-Lab	50.7615, 72.3377, 14.6407

# Details

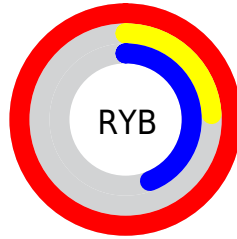
The Android color **4294917488** is a dark color, and the websafe version is hex **FF3366**. The color can be described as middle washed rose. A complement of this color would be **4282253260**, and the grayscale version is **4286414205**.

A 20% lighter version of the original color is **4294933667**, and **4290707521** is the 20% darker color. If you saturate the color by 10%, you get **4294910813**, and if you desaturate by 10%, it is **4294924163**.

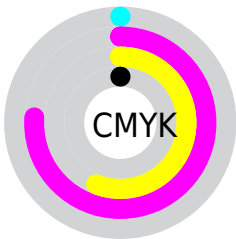
# Distribution



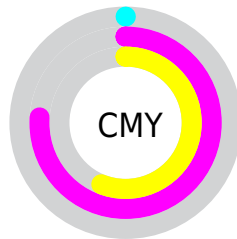
- Red (100%)
- Green (24%)
- Blue (44%)



- Red (100%)
- Yellow (24%)
- Blue (44%)



- Cyan (0%)
- Magenta (76%)
- Yellow (56%)
- Black (0%)



- Cyan (0%)
- Magenta (76%)
- Yellow (56%)

# Brightness & Saturation Gradients

These gradients show how the Android color 4294917488 changes by changing the brightness by 10 percent. The first figure shows a shift by +10% for each color and the second figure -10%.

Similar to the brightness gradients but the following saturation gradients show a change of the Android color 4294917488 by changing the saturation by 10% instead.



 4294917488

 4294917488

4294967295

 4292807768

 4294933667

 4290707521

 4294941374

 4288675883

 4294949082

 4286644248

 4294956791

 4284612610

 4294964479

 4282646531

 4280483841

 4278190080

 4294917488

 4294917488

■ 4294910813

■ 4294924163

■ 4294904394

■ 4294930582

■ 4294901827

■ 4294937256

■ 4294943675

■ 4294950350

■ 4294956769

■ 4294963444

4294967295

# Harmonies

## Analogous

The Analogous color harmony consists of three colors that are next to each other on the color wheel.



4293805746



4294917488



4293810736

# Triad

The Triadic color harmony groups three colors that are evenly spaced from another and form a triangle on the color wheel.



4294917488



4281966360



4278230527

# Complementary

The Complementary color scheme is a pair of colors which are on the opposite of each other on the color wheel.



4294917488



4282253260

# Split Complementary

Split-complementary colors differ from the complementary color scheme. The scheme consists of three colors, the original color and two neighbors of the complement color.



4278232806



4294917488



4278232674

# Square

The Square scheme is like the rectangle color scheme, but the four colors are evenly spaced on the color wheel.



4294917488



4287402240



4278233256



4278225407

# Rectangle

The Rectangle color scheme consists of four colors that form a rectangle on the color wheel.



4294917488



4292177920



4278233256



4278231551



# Sweetspot

The Sweet Spot groups the original color and five complimentary colors.



4294917488



4294952148



4291509759



4286602341



4278190080



4286611584



# Same Dimension

The Same Dimension uses a secret algorithm to generate beautiful new colors.



4294917488



4294907732



4294928957



4286608246



4290707506



4282384401



# Inverse Universe

The Inverse Universe completely reimagines the original color for something new.



4294917488



4294907732



4282241791



4286608246



4290707506



4282384401



# Previews

## White Background



This preview shows how the Android color 4294917488 looks on a white background.

## Color Contrast Check

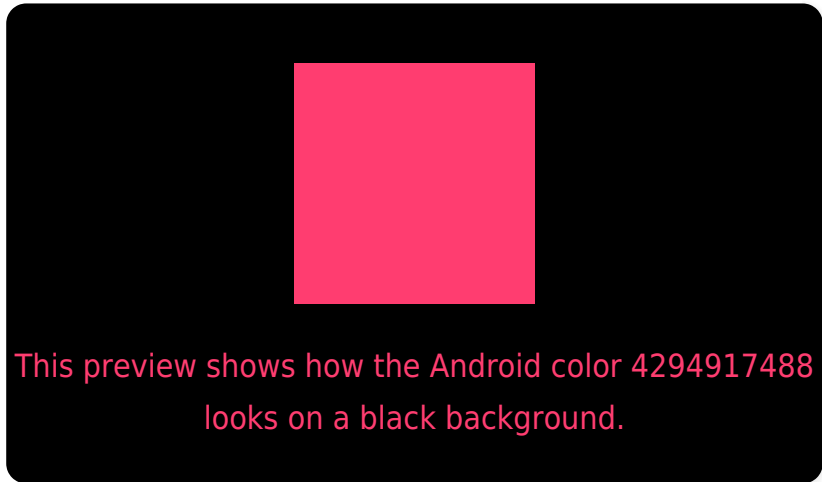
Large Text (above 18pt) WCAG AA ✓ Pass

Any Text WCAG AA ✗ Fail

Large Text (above 18pt) WCAG AAA ✗ Fail

Any Text WCAG AAA ✗ Fail

# Black Background



## Color Contrast Check

Large Text (above 18pt) WCAG AA ✓ Pass

Any Text WCAG AA ✓ Pass

Large Text (above 18pt) WCAG AAA ✓ Pass

Any Text WCAG AAA × Fail

If you want to check with other color combinations, try the [Color Contrast Checker](#).



# Android 4294917488 Background



This preview shows how black text looks on a background with the Android color 4294917488.

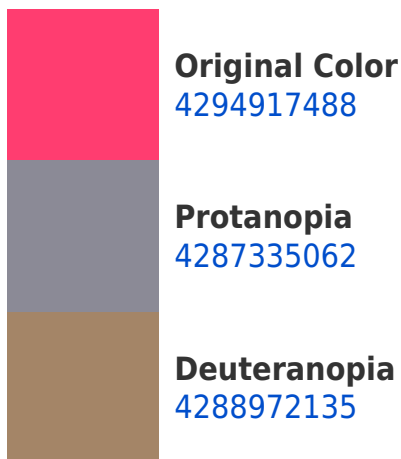


This preview shows how white text looks on a background with the Android color 4294917488.

# Color Blindness Simulation

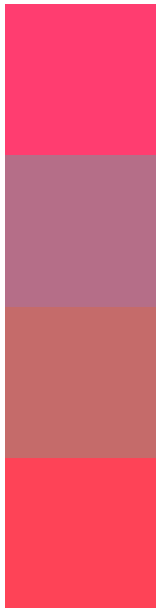
Color vision deficiency is a very complex topic, and I could not describe the different causes any better than Wikipedia does, so if you want to learn more, you should check out their [article about color blindness](#).

## Dichromacy





# Trichromacy



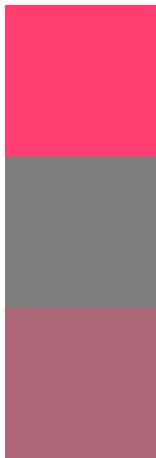
**Original Color**  
4294917488

**Protanomaly**  
4290080392

**Deuteranomaly**  
4291128170

**Tritanomaly**  
4294853463

# Monochromacy



**Original Color**  
4294917488

**Achromatopsia**  
4286414205

**Achromatomaly**  
4289488504

# CSS Examples

## Text

The CSS property to change the color of the text to Android 4294917488 is called "color". The color property can be set on classes, ids or directly on the HTML element.

This example shows how text in the color `rgb(255, 61, 112)` looks like.

```
.text, #text, p{  
    color:rgb(255, 61, 112)  
}
```

If you want to add a text shadow in that color use the text-shadow property, you can generate a text shadow directly with our [CSS Text Shadow Generator](#).

Here you see how black text with a 4 pixel rgb(255, 61, 112) colored shadow looks like.

```
.shadow{ text-shadow: 4px 4px 2px rgb(255, 61, 112) }
```

## Border

The CSS property to change the border of an element to Android 4294917488 is called "border". The border property can be set on classes, ids or directly on the HTML element.

This example shows the color as border, it can be applied via the CSS property "border" or "border-color".

```
.border, #border, table{ border:4px solid rgb(255, 61, 112) }
```

If only the border color should be changed use the property `border-color`.

```
.border{ border-color:rgb(255, 61, 112) }
```

If you want to add a box shadow in that color use:

Here you see how a box with a 4 pixel `rgb(255, 61, 112)` colored shadow looks like.

```
.boxshadow{ -moz-box-shadow:4px 4px 4px  
4px rgb(255, 61, 112); -webkit-box-  
shadow:4px 4px 4px 4px rgb(255, 61, 112);  
box-shadow:4px 4px 4px 4px rgb(255, 61,  
112) }
```

# Background

The CSS property to change the background color of an element to Android 4294917488 is called "background". The background property can be set on classes, ids or directly on the HTML element.

```
.background, #background, body{  
background: rgb(255, 61, 112) }
```

If only the background color should be changed can be used:

```
.background{ background-color: rgb(255, 61,  
112) }
```

This example shows the color as background, it is applied via the CSS property "background".

To optimize and compress your CSS code, you can use our [online CSS compressor and optimizer](#) based on csstidy. If you want to create a linear or radial gradient as background or border, check our [CSS Gradient Generator](#).



Hey! You found this booklet interesting? Support Converting Colors with the new Membership Option!

The pro membership hides all ads, plus gives you double the colors in the color bucket, and more awesome pro features!

**[Learn more, Memberships starting at \\$2.50/m!](#)**

**Follow me  
on Twitter!**

@ConvertingColor