

Converting Colors

Android(4294918018)

Have a look what the booklet for
Android(4294918018) contains.

Android(4294918018)	3
<i>Conversions</i>	4
<i>Details</i>	6
<i>Harmonies</i>	11
<i>Previews</i>	23
<i>Color Blindness Simulation</i>	26
<i>CSS Examples</i>	29

Color

Android(4294918018)

Conversions

Conversions Part 1

Format	Color
Hex	FF3F82
RGB	255, 63, 130
RGB Percent	100%, 25%, 51%
CMY	0.0000, 0.7529, 0.4902
CMYK	0.00, 0.75, 0.49, 0.00
HSL	339°, 100%, 62%
HSV	339°, 75%, 100%
XYZ	47.0468, 26.4267, 23.7403
YIQ	128.0460, 92.9250, 61.5410

Conversions

Conversions Part 2

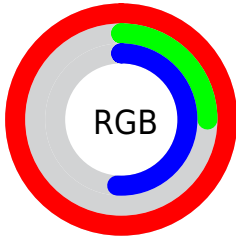
Format	Color
R_{YB}	255, 63, 130
Decimal	16727938
CIE Lab	58.44, 74.66, 7.97
CIE LCh	58, 75.081, 6.093
Yxy	26.4267, 0.4840, 0.2718
Android (android.graphics.Color)	4294918018 (0xFFFF3F82)
YUV	128.0460, 0.9633, 111.3387
Hunter-Lab	51.4069, 73.3981, 8.6040

Details

The Android color **4294918018** is a dark color, and the websafe version is hex **FF0066**. The color can be described as middle washed rose. A complement of this color would be **4282384316**, and the grayscale version is **4286611584**.

A 20% lighter version of the original color is **4294934199**, and **4290773073** is the 20% darker color. If you saturate the color by 10%, you get **4294911345**, and if you desaturate by 10%, it is **4294924691**.

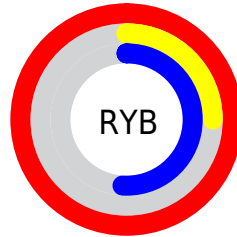
Distribution



Red (100%)

Green (25%)

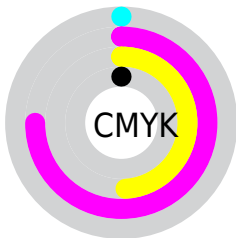
Blue (51%)



Red (100%)

Yellow (25%)

Blue (51%)

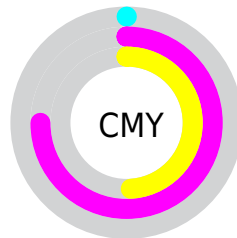


Cyan (0%)

Magenta (75%)

Yellow (49%)

Black (0%)



Cyan (0%)

Magenta (75%)

Yellow (49%)

Brightness & Saturation Gradients

These gradients show how the Android color 4294918018 changes by changing the brightness by 10 percent. The first figure shows a shift by +10% for each color and the second figure -10%.

Similar to the brightness gradients but the following saturation gradients show a change of the Android color 4294918018 by changing the saturation by 10% instead.

 4294918018

 4294918018

4294967295

 4292808809

 4294934199

 4290773073

 4294941906

 4288741435

 4294949614

 4286709797

 4294957311

 4284743697

 4294964991

 4282843140

 4280680449

 4278190080

 4294918018

 4294918018

■ 4294911345

■ 4294924691

■ 4294904929

■ 4294931107

■ 4294901849

■ 4294937780

■ 4294944196

■ 4294950869

■ 4294957286

■ 4294963958

4294967295

Harmonies

Analogous

The Analogous color harmony consists of three colors that are next to each other on the color wheel.



4293153219



4294918018



4294333762

Triad

The Triadic color harmony groups three colors that are evenly spaced from another and form a triangle on the color wheel.



4294918018



4283932160



4278231551

Complementary

The Complementary color scheme is a pair of colors which are on the opposite of each other on the color wheel.



4294918018



4282384316

Split Complementary

Split-complementary colors differ from the complementary color scheme. The scheme consists of three colors, the original color and two neighbors of the complement color.



4278233561



4294918018



4278232660

Square

The Square scheme is like the rectangle color scheme, but the four colors are evenly spaced on the color wheel.



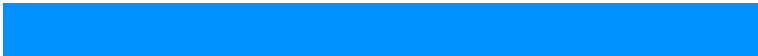
4294918018



4288515584



4278233753



4278227199

Rectangle

The Rectangle color scheme consists of four colors that form a rectangle on the color wheel.



4294918018



4292963093



4278233753



4278232570

Sweetspot

The Sweet Spot groups the original color and five complimentary colors.



4294918018



4294952153



4290527231



4286602344



4278190080



4286611584

Same Dimension

The Same Dimension uses a secret algorithm to generate beautiful new colors.



4294918018



4294908266



4294925375



4286608247



4290707523



4282384406

Inverse Universe

The Inverse Universe completely reimagines the original color for something new.



4294918018



4294908266



4282376959



4286608247



4290707523



4282384406

Previews

White Background



This preview shows how the Android color 4294918018 looks on a white background.

Color Contrast Check

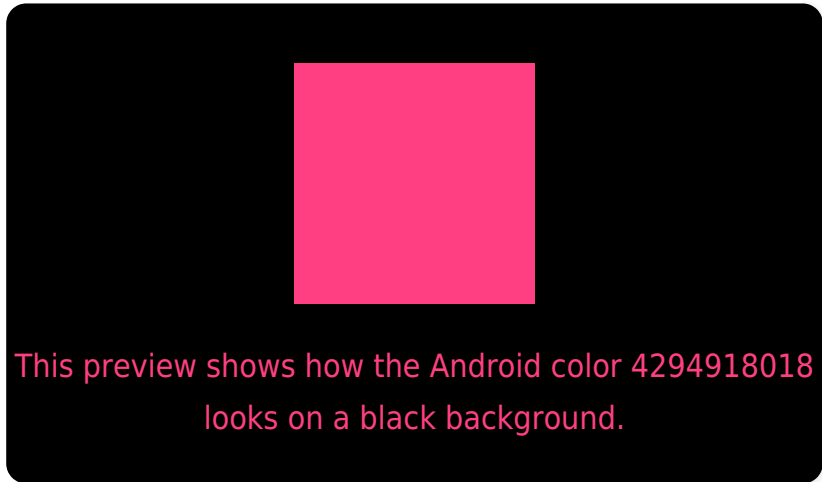
Large Text (above 18pt) WCAG AA ✓ Pass

Any Text WCAG AA × Fail

Large Text (above 18pt) WCAG AAA × Fail

Any Text WCAG AAA × Fail

Black Background



Color Contrast Check

Large Text (above 18pt) WCAG AA ✓ Pass

Any Text WCAG AA ✓ Pass

Large Text (above 18pt) WCAG AAA ✓ Pass

Any Text WCAG AAA × Fail

If you want to check with other color combinations, try the [Color Contrast Checker](#).

Android 4294918018 Background



This preview shows how black text looks on a background with the Android color 4294918018.



This preview shows how white text looks on a background with the Android color 4294918018.

Color Blindness Simulation

Color vision deficiency is a very complex topic, and I could not describe the different causes any better than Wikipedia does, so if you want to learn more, you should check out their [article about color blindness](#).

Dichromacy

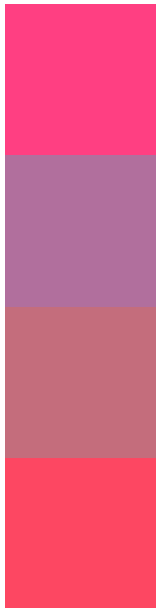


Original Color
4294918018

Protanopia
4286942124

Deuteranopia
4288841593

Trichromacy



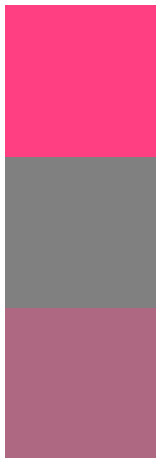
Original Color
4294918018

Protanomaly
4289818525

Deuteranomaly
4291063164

Tritanomaly
4294788962

Monochromacy



Original Color
4294918018

Achromatopsia
4286611584

Achromatomaly
4289620097

CSS Examples

Text

The CSS property to change the color of the text to Android 4294918018 is called "color". The color property can be set on classes, ids or directly on the HTML element.

This example shows how text in the color `rgb(255, 63, 130)` looks like.

```
.text, #text, p{  
    color:rgb(255, 63, 130)  
}
```

If you want to add a text shadow in that color use the text-shadow property, you can generate a text shadow directly with our [CSS Text Shadow Generator](#).

Here you see how black text with a 4 pixel rgb(255, 63, 130) colored shadow looks like.

```
.shadow{ text-shadow: 4px 4px 2px rgb(255, 63, 130) }
```

Border

The CSS property to change the border of an element to Android 4294918018 is called "border". The border property can be set on classes, ids or directly on the HTML element.

This example shows the color as border, it can be applied via the CSS property "border" or "border-color".

```
.border, #border, table{ border:4px solid rgb(255, 63, 130) }
```

If only the border color should be changed use the property border-color.

```
.border{ border-color:rgb(255, 63, 130) }
```

If you want to add a box shadow in that color use:

Here you see how a box with a 4 pixel rgb(255, 63, 130) colored shadow looks like.

```
.boxshadow{ -moz-box-shadow:4px 4px 4px  
4px rgb(255, 63, 130); -webkit-box-  
shadow:4px 4px 4px 4px rgb(255, 63, 130);  
box-shadow:4px 4px 4px 4px rgb(255, 63,  
130) }
```

Background

The CSS property to change the background color of an element to Android 4294918018 is called "background". The background property can be set on classes, ids or directly on the HTML element.

```
.background, #background, body{  
background: rgb(255, 63, 130) }
```

If only the background color should be changed can be used:

```
.background{ background-color: rgb(255, 63,  
130) }
```

This example shows the color as background, it is applied via the CSS property "background".

To optimize and compress your CSS code, you can use our [online CSS compressor and optimizer](#) based on csstidy. If you want to create a linear or radial gradient as background or border, check our [CSS Gradient Generator](#).

Hey! You found this booklet interesting? Support Converting Colors with the new Membership Option!

The pro membership hides all ads, plus gives you double the colors in the color bucket, and more awesome pro features!

[Learn more, Memberships starting at \\$2.50/m!](#)

**Follow me
on Twitter!**

@ConvertingColor