

Converting Colors

Android(4294919306)

Have a look what the booklet for
Android(4294919306) contains.

Android(4294919306)	3
<i>Conversions</i>	4
<i>Details</i>	6
<i>Harmonies</i>	11
<i>Previews</i>	23
<i>Color Blindness Simulation</i>	26
<i>CSS Examples</i>	29

Color

Android(4294919306)

Conversions

Conversions Part 1

Format	Color
Hex	FF448A
RGB	255, 68, 138
RGB Percent	100%, 27%, 54%
CMY	0.0000, 0.7333, 0.4588
CMYK	0.00, 0.73, 0.46, 0.00
HSL	338°, 100%, 63%
HSV	338°, 73%, 100%
XYZ	47.8946, 27.2292, 26.7762
YIQ	131.8930, 88.9820, 61.4140

Conversions

Conversions Part 2

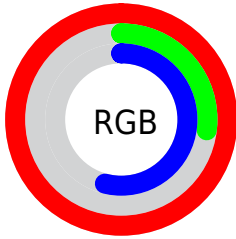
Format	Color
R _{YB}	255, 68, 138
Decimal	16729226
CIE Lab	59.19, 73.80, 4.33
CIE LCh	59, 73.930, 3.356
Yxy	27.2292, 0.4700, 0.2672
Android (android.graphics.Color)	4294919306 (0xFFFF448A)
YUV	131.8930, 3.0108, 107.9648
Hunter-Lab	52.1816, 72.5172, 6.1034

Details

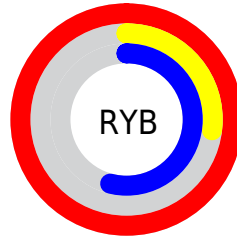
The Android color **4294919306** is a light color, and the websafe version is hex **FF3399**. The color can be described as light washed rose. A complement of this color would be **4282711993**, and the grayscale version is **4286874756**.

A 20% lighter version of the original color is **4294935231**, and **4290773080** is the 20% darker color. If you saturate the color by 10%, you get **4294912634**, and if you desaturate by 10%, it is **4294925722**.

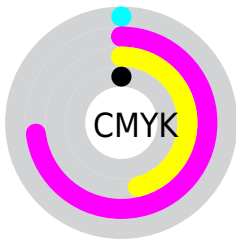
Distribution



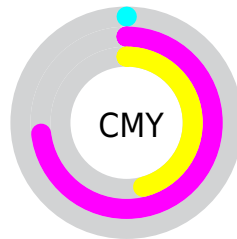
- Red (100%)
- Green (27%)
- Blue (54%)



- Red (100%)
- Yellow (27%)
- Blue (54%)



- Cyan (0%)
- Magenta (73%)
- Yellow (46%)
- Black (0%)



- Cyan (0%)
- Magenta (73%)
- Yellow (46%)

Brightness & Saturation Gradients

These gradients show how the Android color 4294919306 changes by changing the brightness by 10 percent. The first figure shows a shift by +10% for each color and the second figure -10%.

Similar to the brightness gradients but the following saturation gradients show a change of the Android color 4294919306 by changing the saturation by 10% instead.



4294919306



4294919306

4294967295



4292877169



4294935231



4290773080



4294942939



4288806977



4294950391



4286775340



4294958079



4284809240



4294966015



4282974212



4280811521



4278190080



4294919306



4294919306

■ 4294912634

■ 4294925722

■ 4294906218

■ 4294932394

■ 4294901855

■ 4294939066

■ 4294945482

■ 4294951898

■ 4294958570

■ 4294964986

4294967295

Harmonies

Analogous

The Analogous color harmony consists of three colors that are next to each other on the color wheel.



4292958410



4294919306



4294530379

Triad

The Triadic color harmony groups three colors that are evenly spaced from another and form a triangle on the color wheel.



4294919306



4284653312



4278232319

Complementary

The Complementary color scheme is a pair of colors which are on the opposite of each other on the color wheel.



4294919306



4282711993

Split Complementary

Split-complementary colors differ from the complementary color scheme. The scheme consists of three colors, the original color and two neighbors of the complement color.



4278234069



4294919306



4278233168

Square

The Square scheme is like the rectangle color scheme, but the four colors are evenly spaced on the color wheel.



4294919306



4289039872



4278234004



4278228223

Rectangle

The Rectangle color scheme consists of four colors that form a rectangle on the color wheel.



4294919306



4293290530



4278234004



4278233078

Sweetspot

The Sweet Spot groups the original color and five complimentary colors.



4294919306



4294952924



4290200831



4286602859



4278190080



4286611584

Same Dimension

The Same Dimension uses a secret algorithm to generate beautiful new colors.



4294919306



4294909811



4294924868



4286608248



4290707528



4282384408

Inverse Universe

The Inverse Universe completely reimagines the original color for something new.



4294919306



4294909811



4282706431



4286608248



4290707528



4282384408

Previews

White Background



This preview shows how the Android color 4294919306 looks on a white background.

Color Contrast Check

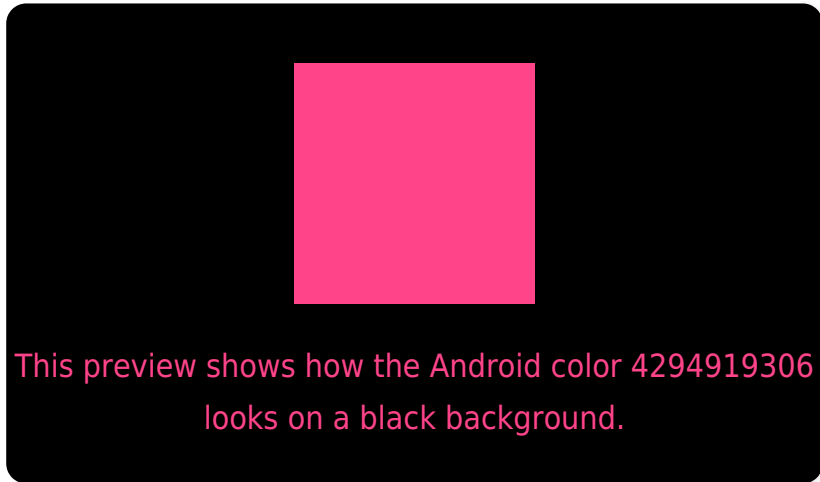
Large Text (above 18pt) WCAG AA ✓ Pass

Any Text WCAG AA ✗ Fail

Large Text (above 18pt) WCAG AAA ✗ Fail

Any Text WCAG AAA ✗ Fail

Black Background



Color Contrast Check

Large Text (above 18pt) WCAG AA ✓ Pass

Any Text WCAG AA ✓ Pass

Large Text (above 18pt) WCAG AAA ✓ Pass

Any Text WCAG AAA × Fail

If you want to check with other color combinations, try the [Color Contrast Checker](#).

Android 4294919306 Background



This preview shows how black text looks on a background with the Android color 4294919306.



This preview shows how white text looks on a background with the Android color 4294919306.

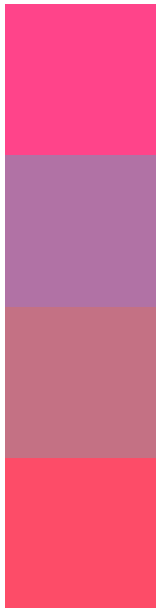
Color Blindness Simulation

Color vision deficiency is a very complex topic, and I could not describe the different causes any better than Wikipedia does, so if you want to learn more, you should check out their [article about color blindness](#).

Dichromacy



Trichromacy



Original Color
4294919306

Protanomaly
4289819301

Deuteranomaly
4291064196

Tritanomaly
4294790248

Monochromacy



Original Color
4294919306

Achromatopsia
4286874756

Achromatomaly
4289817990

CSS Examples

Text

The CSS property to change the color of the text to Android 4294919306 is called "color". The color property can be set on classes, ids or directly on the HTML element.

This example shows how text in the color `rgb(255, 68, 138)` looks like.

```
.text, #text, p{  
    color:rgb(255, 68, 138)  
}
```

If you want to add a text shadow in that color use the text-shadow property, you can generate a text shadow directly with our [CSS Text Shadow Generator](#).

Here you see how black text with a 4 pixel rgb(255, 68, 138) colored shadow looks like.

```
.shadow{ text-shadow: 4px 4px 2px rgb(255, 68, 138) }
```

Border

The CSS property to change the border of an element to Android 4294919306 is called "border". The border property can be set on classes, ids or directly on the HTML element.

This example shows the color as border, it can be applied via the CSS property "border" or "border-color".

```
.border, #border, table{ border:4px solid rgb(255, 68, 138) }
```

If only the border color should be changed use the property `border-color`.

```
.border{ border-color:rgb(255, 68, 138) }
```

If you want to add a box shadow in that color use:

Here you see how a box with a 4 pixel `rgb(255, 68, 138)` colored shadow looks like.

```
.boxshadow{ -moz-box-shadow:4px 4px 4px  
4px rgb(255, 68, 138); -webkit-box-  
shadow:4px 4px 4px 4px rgb(255, 68, 138);  
box-shadow:4px 4px 4px 4px rgb(255, 68,  
138) }
```

Background

The CSS property to change the background color of an element to Android 4294919306 is called "background". The background property can be set on classes, ids or directly on the HTML element.

```
.background, #background, body{  
background: rgb(255, 68, 138) }
```

If only the background color should be changed can be used:

```
.background{ background-color: rgb(255, 68,  
138) }
```

This example shows the color as background, it is applied via the CSS property "background".

To optimize and compress your CSS code, you can use our [online CSS compressor and optimizer](#) based on csstidy. If you want to create a linear or radial gradient as background or border, check our [CSS Gradient Generator](#).

Hey! You found this booklet interesting? Support Converting Colors with the new Membership Option!

The pro membership hides all ads, plus gives you double the colors in the color bucket, and more awesome pro features!

[Learn more, Memberships starting at \\$2.50/m!](#)

**Follow me
on Twitter!**

@ConvertingColor