

Converting Colors

Android(4294922897)

Have a look what the booklet for
Android(4294922897) contains.

Android(4294922897)	3
<i>Conversions</i>	4
<i>Details</i>	6
<i>Harmonies</i>	11
<i>Previews</i>	23
<i>Color Blindness Simulation</i>	26
<i>CSS Examples</i>	29

Color

Android(4294922897)

Conversions

Conversions Part 1

Format	Color
Hex	FF5291
RGB	255, 82, 145
RGB Percent	100%, 32%, 57%
CMY	0.0000, 0.6784, 0.4314
CMYK	0.00, 0.68, 0.43, 0.00
HSL	338°, 100%, 66%
HSV	338°, 68%, 100%
XYZ	49.3681, 29.3389, 29.8491
YIQ	140.9090, 82.8850, 56.2690

Conversions

Conversions Part 2

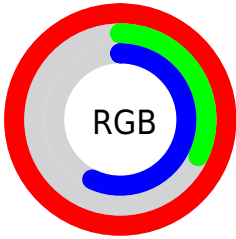
Format	Color
R _Y B	255, 82, 145
Decimal	16732817
CIE Lab	61.08, 69.68, 2.97
CIE LCh	61, 69.744, 2.443
Yxy	29.3389, 0.4548, 0.2703
Android (android.graphics.Color)	4294922897 (0xFFFF5291)
YUV	140.9090, 2.0169, 100.0578
Hunter-Lab	54.1654, 67.9013, 5.2427

Details

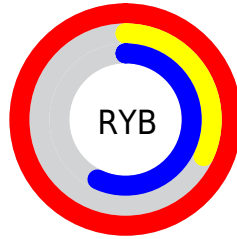
The Android color `4294922897` is a light color, and the websafe version is hex `FF6699`. The color can be described as light muted rose. A complement of this color would be `4283629504`, and the grayscale version is `4287466893`.

A 20% lighter version of the original color is `4294938055`, and `4290838623` is the 20% darker color. If you saturate the color by 10%, you get `4294916481`, and if you desaturate by 10%, it is `4294929313`.

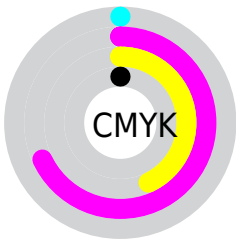
Distribution



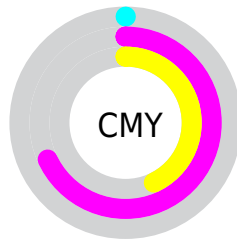
- Red (100%)
- Green (32%)
- Blue (57%)



- Red (100%)
- Yellow (32%)
- Blue (57%)



- Cyan (0%)
- Magenta (68%)
- Yellow (43%)
- Black (0%)



- Cyan (0%)
- Magenta (68%)
- Yellow (43%)

Brightness & Saturation Gradients

These gradients show how the Android color 4294922897 changes by changing the brightness by 10 percent. The first figure shows a shift by +10% for each color and the second figure -10%.

Similar to the brightness gradients but the following saturation gradients show a change of the Android color 4294922897 by changing the saturation by 10% instead.



4294922897



4294922897

4294967295



4292882807



4294938055



4290838623



4294945763



4288872519



4294953215



4286840881



4294960895



4284940317



4283105283



4281073665



4278190080



4294922897



4294922897

■ 4294916481

■ 4294929313

■ 4294909809

■ 4294935985

■ 4294903392

■ 4294942658

■ 4294901853

■ 4294949074

■ 4294955746

■ 4294962162

4294967295

Harmonies

Analogous

The Analogous color harmony consists of three colors that are next to each other on the color wheel.



4292961230



4294922897



4294664021

Triad

The Triadic color harmony groups three colors that are evenly spaced from another and form a triangle on the color wheel.



4294922897



4285375256



4278233343

Complementary

The Complementary color scheme is a pair of colors which are on the opposite of each other on the color wheel.



4294922897



4283629504

Split Complementary

Split-complementary colors differ from the complementary color scheme. The scheme consists of three colors, the original color and two neighbors of the complement color.



4278235092



4294922897



4278234199

Square

The Square scheme is like the rectangle color scheme, but the four colors are evenly spaced on the color wheel.



4294922897



4289499648



4278235031



4278229503

Rectangle

The Rectangle color scheme consists of four colors that form a rectangle on the color wheel.



4294922897



4293488944



4278235031



4278234101

Sweetspot

The Sweet Spot groups the original color and five complimentary colors.



4294922897



4294954207



4290794239



4286603628



4278190080



4286611584

Same Dimension

The Same Dimension uses a secret algorithm to generate beautiful new colors.



4294922897



4294914172



4294928722



4286608247



4290707526



4282384407

Inverse Universe

The Inverse Universe completely reimagines the original color for something new.



4294922897



4294914172



4283623679



4286608247



4290707526



4282384407

Previews

White Background



This preview shows how the Android color 4294922897 looks on a white background.

Color Contrast Check

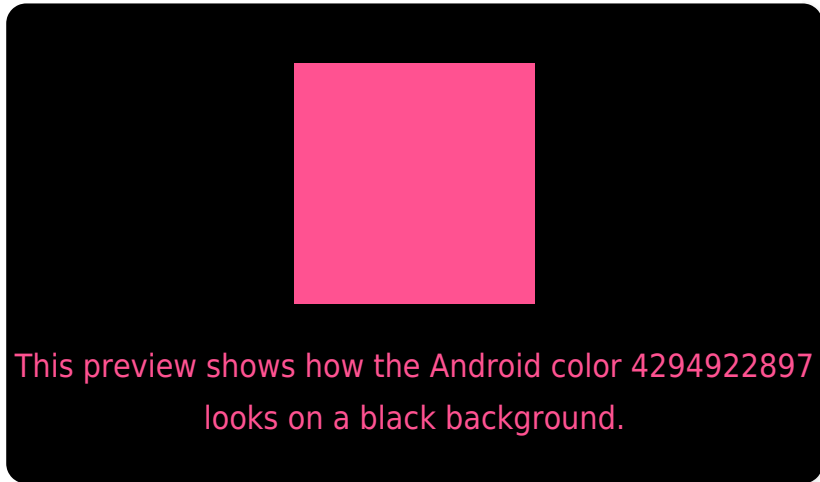
Large Text (above 18pt) WCAG AA ✓ Pass

Any Text WCAG AA ✗ Fail

Large Text (above 18pt) WCAG AAA ✗ Fail

Any Text WCAG AAA ✗ Fail

Black Background



Color Contrast Check

Large Text (above 18pt) WCAG AA ✓ Pass

Any Text WCAG AA ✓ Pass

Large Text (above 18pt) WCAG AAA ✓ Pass

Any Text WCAG AAA × Fail

If you want to check with other color combinations, try the [Color Contrast Checker](#).

Android 4294922897 Background



This preview shows how black text looks on a background with the Android color 4294922897.



This preview shows how white text looks on a background with the Android color 4294922897.

Color Blindness Simulation

Color vision deficiency is a very complex topic, and I could not describe the different causes any better than Wikipedia does, so if you want to learn more, you should check out their [article about color blindness](#).

Dichromacy

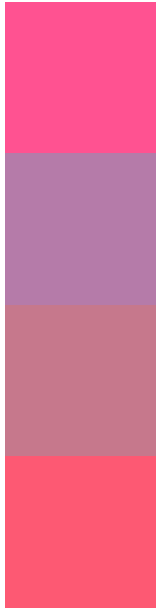


Original Color
4294922897

Protanopia
4287337143

Deuteranopia
4289105545

Trichromacy



Original Color
4294922897

Protanomaly
4290083753

Deuteranomaly
4291197068

Tritanomaly
4294793587

Monochromacy



Original Color
4294922897

Achromatopsia
4287466893

Achromatomaly
4290148494

CSS Examples

Text

The CSS property to change the color of the text to Android 4294922897 is called "color". The color property can be set on classes, ids or directly on the HTML element.

This example shows how text in the color `rgb(255, 82, 145)` looks like.

```
.text, #text, p{  
    color:rgb(255, 82, 145)  
}
```

If you want to add a text shadow in that color use the text-shadow property, you can generate a text shadow directly with our [CSS Text Shadow Generator](#).

Here you see how black text with a 4 pixel rgb(255, 82, 145) colored shadow looks like.

```
.shadow{ text-shadow: 4px 4px 2px rgb(255, 82, 145) }
```

Border

The CSS property to change the border of an element to Android 4294922897 is called "border". The border property can be set on classes, ids or directly on the HTML element.

This example shows the color as border, it can be applied via the CSS property "border" or "border-color".

```
.border, #border, table{ border:4px solid rgb(255, 82, 145) }
```

If only the border color should be changed use the property `border-color`.

```
.border{ border-color:rgb(255, 82, 145) }
```

If you want to add a box shadow in that color use:

Here you see how a box with a 4 pixel `rgb(255, 82, 145)` colored shadow looks like.

```
.boxshadow{ -moz-box-shadow:4px 4px 4px 4px rgb(255, 82, 145); -webkit-box-shadow:4px 4px 4px 4px rgb(255, 82, 145); box-shadow:4px 4px 4px 4px rgb(255, 82, 145) }
```

Background

The CSS property to change the background color of an element to Android 4294922897 is called "background". The background property can be set on classes, ids or directly on the HTML element.

```
.background, #background, body{  
background: rgb(255, 82, 145) }
```

If only the background color should be changed can be used:

```
.background{ background-color: rgb(255, 82,  
145) }
```

This example shows the color as background, it is applied via the CSS property "background".

To optimize and compress your CSS code, you can use our [online CSS compressor and optimizer](#) based on csstidy. If you want to create a linear or radial gradient as background or border, check our [CSS Gradient Generator](#).

Hey! You found this booklet interesting? Support Converting Colors with the new Membership Option!

The pro membership hides all ads, plus gives you double the colors in the color bucket, and more awesome pro features!

[Learn more, Memberships starting at \\$2.50/m!](#)

**Follow me
on Twitter!**

@ConvertingColor