

Converting Colors

Android(4294924401)

Have a look what the booklet for
Android(4294924401) contains.

Android(4294924401)	3
<i>Conversions</i>	4
<i>Details</i>	6
<i>Harmonies</i>	11
<i>Previews</i>	23
<i>Color Blindness Simulation</i>	26
<i>CSS Examples</i>	29

Color

Android(4294924401)

Conversions

Conversions Part 1

Format	Color
Hex	FF5871
RGB	255, 88, 113
RGB Percent	100%, 35%, 44%
CMY	0.0000, 0.6549, 0.5569
CMYK	0.00, 0.65, 0.56, 0.00
HSL	351°, 100%, 67%
HSV	351°, 65%, 100%
XYZ	47.7104, 29.4317, 18.7891
YIQ	140.7830, 91.5070, 43.1790

Conversions

Conversions Part 2

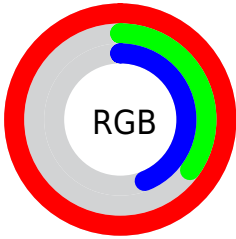
Format	Color
R_{YB}	255, 88, 113
Decimal	16734321
CIE _{Lab}	61.16, 64.78, 21.69
CIE _{LCh}	61, 68.315, 18.511
Yxy	29.4317, 0.4973, 0.3068
Android (android.graphics.Color)	4294924401 (0xFFFF5871)
YUV	140.7830, -13.6970, 100.1683
Hunter-Lab	54.2510, 62.0404, 17.4414

Details

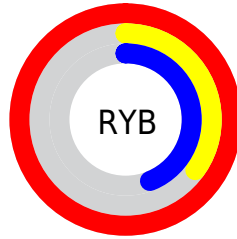
The Android color **4294924401** is a light color, and the websafe version is hex **FF6666**. The color can be described as light muted rose. A complement of this color would be **4284022758**, and the grayscale version is **4287466893**.

A 20% lighter version of the original color is **4294939301**, and **4290777154** is the 20% darker color. If you saturate the color by 10%, you get **4294917979**, and if you desaturate by 10%, it is **4294931079**.

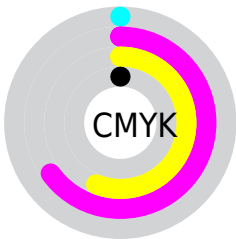
Distribution



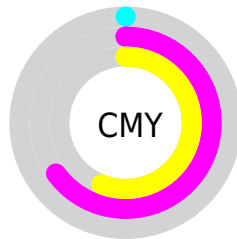
- Red (100%)
- Green (35%)
- Blue (44%)



- Red (100%)
- Yellow (35%)
- Blue (44%)



- Cyan (0%)
- Magenta (65%)
- Yellow (56%)
- Black (0%)



- Cyan (0%)
- Magenta (65%)
- Yellow (56%)

Brightness & Saturation Gradients

These gradients show how the Android color 4294924401 changes by changing the brightness by 10 percent. The first figure shows a shift by +10% for each color and the second figure -10%.

Similar to the brightness gradients but the following saturation gradients show a change of the Android color 4294924401 by changing the saturation by 10% instead.

 4294924401

 4294924401

4294967295

 4292819289

 4294939301

 4290777154

 4294946752

 4288741420

 4294954203

 4286709784

 4294961656

 4284743680

 4282843139

 4280811521

 4278190080

 4294924401

 4294924401

■ 4294917979

■ 4294931079

■ 4294911302

■ 4294937500

■ 4294904880

■ 4294944178

■ 4294901798

■ 4294950600

■ 4294957277

■ 4294963699

4294967295

Harmonies

Analogous

The Analogous color harmony consists of three colors that are next to each other on the color wheel.



4294203822



4294924401



4293685050

Triad

The Triadic color harmony groups three colors that are evenly spaced from another and form a triangle on the color wheel.



4294924401



4282427453



4278231551

Complementary

The Complementary color scheme is a pair of colors which are on the opposite of each other on the color wheel.



4294924401



4284022758

Split Complementary

Split-complementary colors differ from the complementary color scheme. The scheme consists of three colors, the original color and two neighbors of the complement color.



4278234349



4294924401



4278234746

Square

The Square scheme is like the rectangle color scheme, but the four colors are evenly spaced on the color wheel.



4294924401



4287470592



4278235320



4284517887

Rectangle

The Rectangle color scheme consists of four colors that form a rectangle on the color wheel.



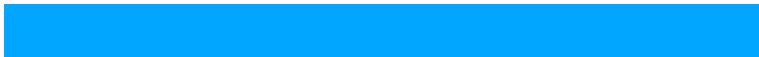
4294924401



4292050965



4278235320



4278232831

Sweetspot

The Sweet Spot groups the original color and five complimentary colors.



4294924401



4294954196



4293286143



4286603621



4278190080



4286611584

Same Dimension

The Same Dimension uses a secret algorithm to generate beautiful new colors.



4294924401



4294915668



4294939224



4286608245



4290707485



4282384394

Inverse Universe

The Inverse Universe completely reimagines the original color for something new.



4294924401



4294915668



4284007935



4286608245



4290707485



4282384394

Previews

White Background



This preview shows how the Android color 4294924401 looks on a white background.

Color Contrast Check

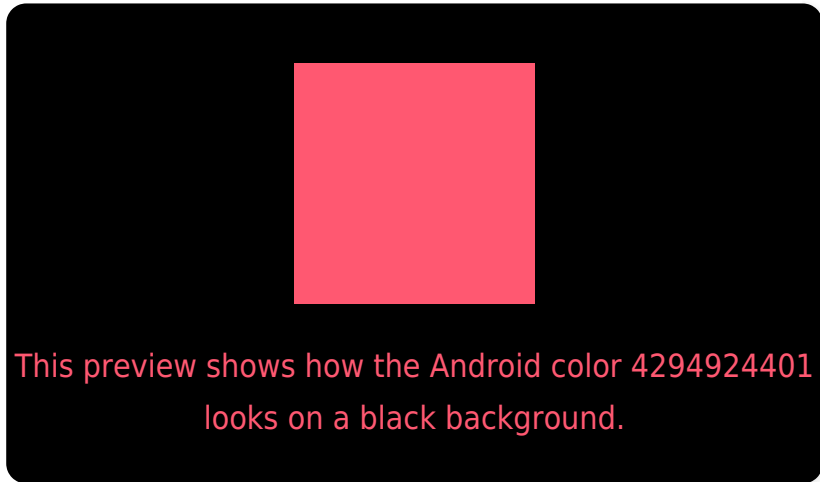
Large Text (above 18pt) WCAG AA ✓ Pass

Any Text WCAG AA ✗ Fail

Large Text (above 18pt) WCAG AAA ✗ Fail

Any Text WCAG AAA ✗ Fail

Black Background



Color Contrast Check

Large Text (above 18pt) WCAG AA ✓ Pass

Any Text WCAG AA ✓ Pass

Large Text (above 18pt) WCAG AAA ✓ Pass

Any Text WCAG AAA × Fail

If you want to check with other color combinations, try the [Color Contrast Checker](#).

Android 4294924401 Background



This preview shows how black text looks on a background with the Android color 4294924401.



This preview shows how white text looks on a background with the Android color 4294924401.

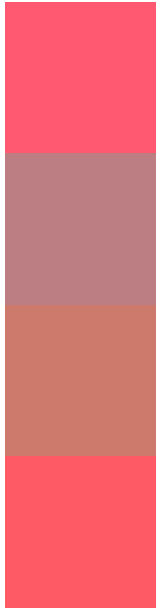
Color Blindness Simulation

Color vision deficiency is a very complex topic, and I could not describe the different causes any better than Wikipedia does, so if you want to learn more, you should check out their [article about color blindness](#).

Dichromacy



Trichromacy



Original Color
4294924401

Protanomaly
4290608771

Deuteranomaly
4291656300

Tritanomaly
4294859366

Monochromacy



Original Color
4294924401

Achromatopsia
4287466893

Achromatomaly
4290148995

CSS Examples

Text

The CSS property to change the color of the text to Android 4294924401 is called "color". The color property can be set on classes, ids or directly on the HTML element.

This example shows how text in the color `rgb(255, 88, 113)` looks like.

```
.text, #text, p{  
    color:rgb(255, 88, 113)  
}
```

If you want to add a text shadow in that color use the text-shadow property, you can generate a text shadow directly with our [CSS Text Shadow Generator](#).

Here you see how black text with a 4 pixel rgb(255, 88, 113) colored shadow looks like.

```
.shadow{ text-shadow: 4px 4px 2px rgb(255, 88, 113) }
```

Border

The CSS property to change the border of an element to Android 4294924401 is called "border". The border property can be set on classes, ids or directly on the HTML element.

This example shows the color as border, it can be applied via the CSS property "border" or "border-color".

```
.border, #border, table{ border:4px solid rgb(255, 88, 113) }
```

If only the border color should be changed use the property border-color.

```
.border{ border-color:rgb(255, 88, 113) }
```

If you want to add a box shadow in that color use:

Here you see how a box with a 4 pixel rgb(255, 88, 113) colored shadow looks like.

```
.boxshadow{ -moz-box-shadow:4px 4px 4px  
4px rgb(255, 88, 113); -webkit-box-  
shadow:4px 4px 4px 4px rgb(255, 88, 113);  
box-shadow:4px 4px 4px 4px rgb(255, 88,  
113) }
```

Background

The CSS property to change the background color of an element to Android 4294924401 is called "background". The background property can be set on classes, ids or directly on the HTML element.

```
.background, #background, body{  
background: rgb(255, 88, 113) }
```

If only the background color should be changed can be used:

```
.background{ background-color: rgb(255, 88,  
113) }
```

This example shows the color as background, it is applied via the CSS property "background".

To optimize and compress your CSS code, you can use our [online CSS compressor and optimizer](#) based on csstidy. If you want to create a linear or radial gradient as background or border, check our [CSS Gradient Generator](#).

Hey! You found this booklet interesting? Support Converting Colors with the new Membership Option!

The pro membership hides all ads, plus gives you double the colors in the color bucket, and more awesome pro features!

[Learn more, Memberships starting at \\$2.50/m!](#)

**Follow me
on Twitter!**

@ConvertingColor