

Converting Colors

Android(4294924926)

Have a look what the booklet for
Android(4294924926) contains.

Android(4294924926)	3
<i>Conversions</i>	4
<i>Details</i>	6
<i>Harmonies</i>	11
<i>Previews</i>	23
<i>Color Blindness Simulation</i>	26
<i>CSS Examples</i>	29

Color

Android(4294924926)

Conversions

Conversions Part 1

Format	Color
Hex	FF5A7E
RGB	255, 90, 126
RGB Percent	100%, 35%, 49%
CMY	0.0000, 0.6471, 0.5059
CMYK	0.00, 0.65, 0.51, 0.00
HSL	347°, 100%, 68%
HSV	347°, 65%, 100%
XYZ	48.6621, 30.0787, 22.9797
YIQ	143.4390, 86.7840, 46.1760

Conversions

Conversions Part 2

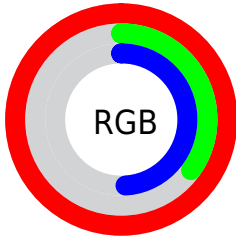
Format	Color
R _Y B	255, 90, 126
Decimal	16734846
CIE Lab	61.72, 64.99, 14.93
CIE LCh	62, 66.678, 12.937
Yxy	30.0787, 0.4784, 0.2957
Android (android.graphics.Color)	4294924926 (0xFFFF5A7E)
YUV	143.4390, -8.5974, 97.8390
Hunter-Lab	54.8440, 62.4025, 13.5483

Details

The Android color `4294924926` is a light color, and the websafe version is hex `FF6699`. The color can be described as light muted rose. A complement of this color would be `4284153819`, and the grayscale version is `4287598479`.

A 20% lighter version of the original color is `4294939826`, and `4290843725` is the 20% darker color. If you saturate the color by 10%, you get `4294918506`, and if you desaturate by 10%, it is `4294931602`.

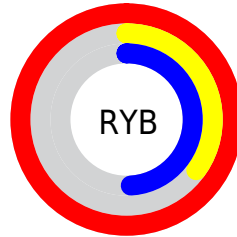
Distribution



Red (100%)

Green (35%)

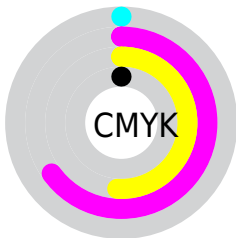
Blue (49%)



Red (100%)

Yellow (35%)

Blue (49%)

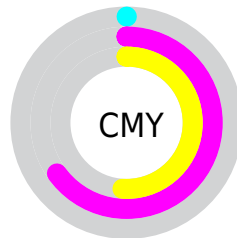


Cyan (0%)

Magenta (65%)

Yellow (51%)

Black (0%)



Cyan (0%)

Magenta (65%)

Yellow (51%)

Brightness & Saturation Gradients

These gradients show how the Android color #4294924926 changes by changing the brightness by 10 percent. The first figure shows a shift by +10% for each color and the second figure -10%.

Similar to the brightness gradients but the following saturation gradients show a change of the Android color #4294924926 by changing the saturation by 10% instead.

 4294924926

 4294924926

4294967295

 4292885349

 4294939826

 4290843725

 4294947278

 4288806967

 4294954730

 4286840866

 4294962175

 4284874764

 4282974211

 4280942593

 4278190080

 4294924926

 4294924926

■ 4294918506

■ 4294931602

■ 4294911830

■ 4294938022

■ 4294905410

■ 4294944698

■ 4294901816

■ 4294951118

■ 4294957794

■ 4294964214

4294967295

Harmonies

Analogous

The Analogous color harmony consists of three colors that are next to each other on the color wheel.



4293812409



4294924926



4294077767

Triad

The Triadic color harmony groups three colors that are evenly spaced from another and form a triangle on the color wheel.



4294924926



4283868983



4278232575

Complementary

The Complementary color scheme is a pair of colors which are on the opposite of each other on the color wheel.



4294924926



4284153819

Split Complementary

Split-complementary colors differ from the complementary color scheme. The scheme consists of three colors, the original color and two neighbors of the complement color.



4278234852



4294924926



4278234736

Square

The Square scheme is like the rectangle color scheme, but the four colors are evenly spaced on the color wheel.



4294924926



4288322048



4278235566



4282749951

Rectangle

The Rectangle color scheme consists of four colors that form a rectangle on the color wheel.



4294924926



4292574758



4278235566



4278233598

Sweetspot

The Sweet Spot groups the original color and five complimentary colors.



4294924926



4294954969



4292434687



4286603881



4278190080



4286611584

Same Dimension

The Same Dimension uses a secret algorithm to generate beautiful new colors.



4294924926



4294916195



4294936154



4286608246



4290707498



4282384398

Inverse Universe

The Inverse Universe completely reimagines the original color for something new.



4294924926



4294916195



4284142591



4286608246



4290707498



4282384398

Previews

White Background



This preview shows how the Android color 4294924926 looks on a white background.

Color Contrast Check

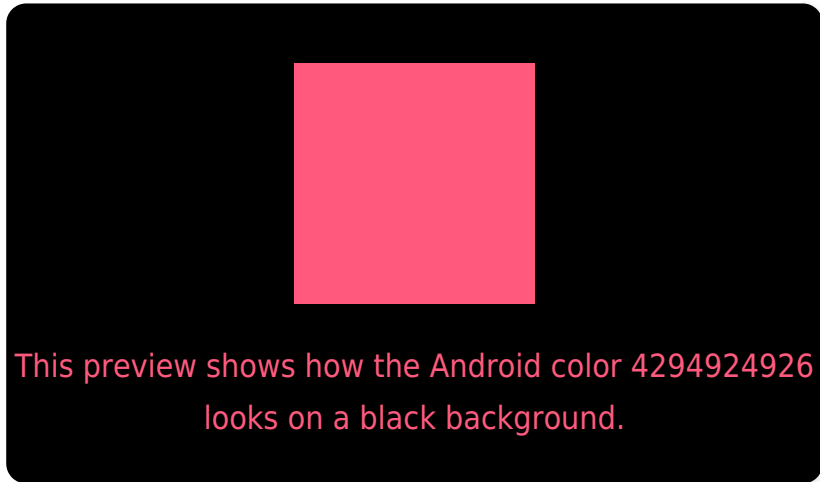
Large Text (above 18pt) WCAG AA × Fail

Any Text WCAG AA × Fail

Large Text (above 18pt) WCAG AAA × Fail

Any Text WCAG AAA × Fail

Black Background



Color Contrast Check

Large Text (above 18pt) WCAG AA ✓ Pass

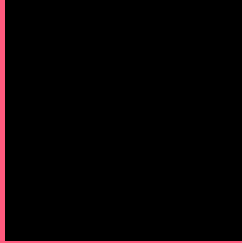
Any Text WCAG AA ✓ Pass

Large Text (above 18pt) WCAG AAA ✓ Pass

Any Text WCAG AAA ✓ Pass

If you want to check with other color combinations, try the [Color Contrast Checker](#).

Android 4294924926 Background



This preview shows how black text looks on a background with the Android color 4294924926.



This preview shows how white text looks on a background with the Android color 4294924926.

Color Blindness Simulation

Color vision deficiency is a very complex topic, and I could not describe the different causes any better than Wikipedia does, so if you want to learn more, you should check out their [article about color blindness](#).

Dichromacy

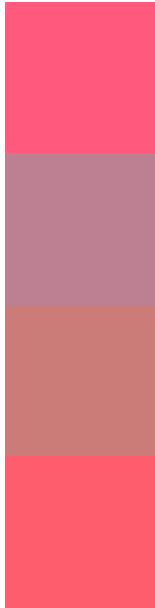


Original Color
4294924926

Protanopia
4288058781

Deuteranopia
4289630070

Trichromacy



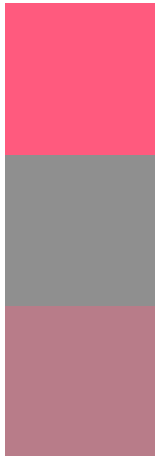
Original Color
4294924926

Protanomaly
4290543762

Deuteranomaly
4291525753

Tritanomaly
4294860142

Monochromacy



Original Color
4294924926

Achromatopsia
4287598479

Achromatomaly
4290280585

CSS Examples

Text

The CSS property to change the color of the text to Android 4294924926 is called "color". The color property can be set on classes, ids or directly on the HTML element.

This example shows how text in the color `rgb(255, 90, 126)` looks like.

```
.text, #text, p{  
    color:rgb(255, 90, 126)  
}
```

If you want to add a text shadow in that color use the text-shadow property, you can generate a text shadow directly with our [CSS Text Shadow Generator](#).

Here you see how black text with a 4 pixel rgb(255, 90, 126) colored shadow looks like.

```
.shadow{ text-shadow: 4px 4px 2px rgb(255, 90, 126) }
```

Border

The CSS property to change the border of an element to Android 4294924926 is called "border". The border property can be set on classes, ids or directly on the HTML element.

This example shows the color as border, it can be applied via the CSS property "border" or "border-color".

```
.border, #border, table{ border:4px solid rgb(255, 90, 126) }
```

If only the border color should be changed use the property `border-color`.

```
.border{ border-color:rgb(255, 90, 126) }
```

If you want to add a box shadow in that color use:

Here you see how a box with a 4 pixel `rgb(255, 90, 126)` colored shadow looks like.

```
.boxshadow{ -moz-box-shadow:4px 4px 4px  
4px rgb(255, 90, 126); -webkit-box-  
shadow:4px 4px 4px 4px rgb(255, 90, 126);  
box-shadow:4px 4px 4px 4px rgb(255, 90,  
126) }
```

Background

The CSS property to change the background color of an element to Android 4294924926 is called "background". The background property can be set on classes, ids or directly on the HTML element.

```
.background, #background, body{  
background: rgb(255, 90, 126) }
```

If only the background color should be changed can be used:

```
.background{ background-color: rgb(255, 90,  
126) }
```

This example shows the color as background, it is applied via the CSS property "background".

To optimize and compress your CSS code, you can use our [online CSS compressor and optimizer](#) based on csstidy. If you want to create a linear or radial gradient as background or border, check our [CSS Gradient Generator](#).

Hey! You found this booklet interesting? Support Converting Colors with the new Membership Option!

The pro membership hides all ads, plus gives you double the colors in the color bucket, and more awesome pro features!

[Learn more, Memberships starting at \\$2.50/m!](#)

**Follow me
on Twitter!**

@ConvertingColor