

Converting Colors

Android(4294927496)

Have a look what the booklet for
Android(4294927496) contains.

Android(4294927496)	3
<i>Conversions</i>	4
<i>Details</i>	6
<i>Harmonies</i>	11
<i>Previews</i>	23
<i>Color Blindness Simulation</i>	26
<i>CSS Examples</i>	29

Color

Android(4294927496)

Conversions

Conversions Part 1

Format	Color
Hex	FF6488
RGB	255, 100, 136
RGB Percent	100%, 39%, 53%
CMY	0.0000, 0.6078, 0.4667
CMYK	0.00, 0.61, 0.47, 0.00
HSL	346°, 100%, 70%
HSV	346°, 61%, 100%
XYZ	50.2411, 32.1519, 26.8505
YIQ	150.4490, 80.8240, 44.0560

Conversions

Conversions Part 2

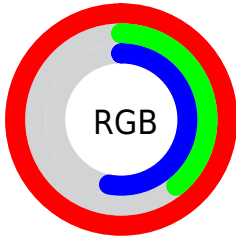
Format	Color
R _Y B	255, 100, 136
Decimal	16737416
CIE Lab	63.47, 61.74, 11.60
CIE LCh	63, 62.819, 10.637
Yxy	32.1519, 0.4599, 0.2943
Android (android.graphics.Color)	4294927496 (0xFFFF6488)
YUV	150.4490, -7.1234, 91.6912
Hunter-Lab	56.7027, 58.9294, 11.6162

Details

The Android color **4294927496** is a light color, and the websafe version is hex **FF6699**. A complement of this color would be **4284809179**, and the grayscale version is **4288059030**.

A 20% lighter version of the original color is **4294942141**, and **4290848599** is the 20% darker color. If you saturate the color by 10%, you get **4294921076**, and if you desaturate by 10%, it is **4294933916**.

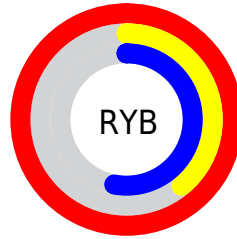
Distribution



Red (100%)

Green (39%)

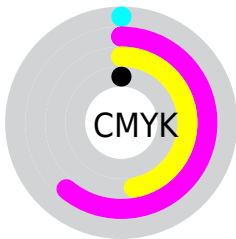
Blue (53%)



Red (100%)

Yellow (39%)

Blue (53%)

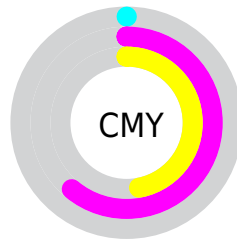


Cyan (0%)

Magenta (61%)

Yellow (47%)

Black (0%)



Cyan (0%)

Magenta (61%)

Yellow (47%)

Brightness & Saturation Gradients

These gradients show how the Android color 4294927496 changes by changing the brightness by 10 percent. The first figure shows a shift by +10% for each color and the second figure -10%.

Similar to the brightness gradients but the following saturation gradients show a change of the Android color 4294927496 by changing the saturation by 10% instead.

 4294927496

 4294927496

4294967295

 4292888431

 4294942141

 4290848599

 4294949593

 4288872512

 4294957045

 4286906410

 4294964479

 4284940310

 4283105282

 4281139202

 4278190080

 4294927496

 4294927496

■ 4294921076

■ 4294933916

■ 4294914401

■ 4294940591

■ 4294907981

■ 4294947267

■ 4294901819

■ 4294953686

■ 4294960106

■ 4294966781

4294967295

Harmonies

Analogous

The Analogous color harmony consists of three colors that are next to each other on the color wheel.



4293684160



4294927496



4294275923

Triad

The Triadic color harmony groups three colors that are evenly spaced from another and form a triangle on the color wheel.



4294927496



4284918590



4278233855

Complementary

The Complementary color scheme is a pair of colors which are on the opposite of each other on the color wheel.



4294927496



4284809179

Split Complementary

Split-complementary colors differ from the complementary color scheme. The scheme consists of three colors, the original color and two neighbors of the complement color.



4278235873



4294927496



4278235762

Square

The Square scheme is like the rectangle color scheme, but the four colors are evenly spaced on the color wheel.



4294927496



4288978203



4278236333



4283013631

Rectangle

The Rectangle color scheme consists of four colors that form a rectangle on the color wheel.



4294927496



4292969014



4278236333



4278234619

Sweetspot

The Sweet Spot groups the original color and five complimentary colors.



4294927496



4294955484



4292568319



4286604138



4278190080



4286611584

Same Dimension

The Same Dimension uses a secret algorithm to generate beautiful new colors.



4294927496



4294919536



4294937956



4286608246



4290707500



4282384399

Inverse Universe

The Inverse Universe completely reimagines the original color for something new.



4294927496



4294919536



4284798719



4286608246



4290707500



4282384399

Previews

White Background



This preview shows how the Android color 4294927496 looks on a white background.

Color Contrast Check

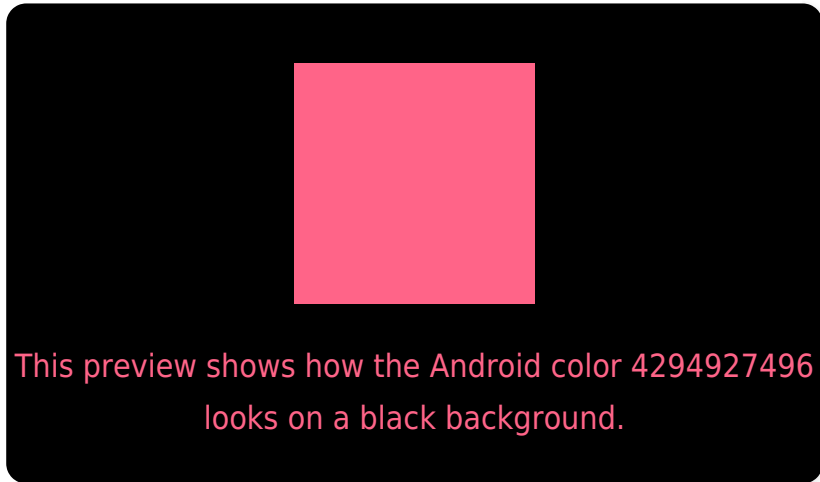
Large Text (above 18pt) WCAG AA × Fail

Any Text WCAG AA × Fail

Large Text (above 18pt) WCAG AAA × Fail

Any Text WCAG AAA × Fail

Black Background



Color Contrast Check

Large Text (above 18pt) WCAG AA ✓ Pass

Any Text WCAG AA ✓ Pass

Large Text (above 18pt) WCAG AAA ✓ Pass

Any Text WCAG AAA ✓ Pass

If you want to check with other color combinations, try the [Color Contrast Checker](#).

Android 4294927496 Background



This preview shows how black text looks on a background with the Android color 4294927496.



This preview shows how white text looks on a background with the Android color 4294927496.

Color Blindness Simulation

Color vision deficiency is a very complex topic, and I could not describe the different causes any better than Wikipedia does, so if you want to learn more, you should check out their [article about color blindness](#).

Dichromacy

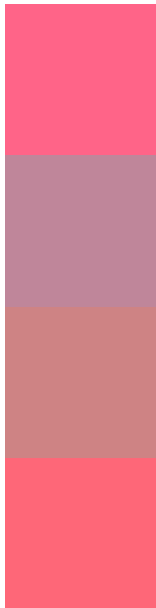


Original Color
4294927496

Protanopia
4288321957

Deuteranopia
4289893505

Trichromacy



Original Color
4294927496

Protanomaly
4290741914

Deuteranomaly
4291724164

Tritanomaly
4294862712

Monochromacy



Original Color
4294927496

Achromatopsia
4288059030

Achromatomaly
4290544785

CSS Examples

Text

The CSS property to change the color of the text to Android 4294927496 is called "color". The color property can be set on classes, ids or directly on the HTML element.

This example shows how text in the color `rgb(255, 100, 136)` looks like.

```
.text, #text, p{  
    color:rgb(255, 100, 136)  
}
```

If you want to add a text shadow in that color use the text-shadow property, you can generate a text shadow directly with our [CSS Text Shadow Generator](#).

Here you see how black text with a 4 pixel rgb(255, 100, 136) colored shadow looks like.

```
.shadow{ text-shadow: 4px 4px 2px rgb(255, 100, 136) }
```

Border

The CSS property to change the border of an element to Android 4294927496 is called "border". The border property can be set on classes, ids or directly on the HTML element.

This example shows the color as border, it can be applied via the CSS property "border" or "border-color".

```
.border, #border, table{ border:4px solid rgb(255, 100, 136) }
```

If only the border color should be changed use the property `border-color`.

```
.border{ border-color:rgb(255, 100, 136) }
```

If you want to add a box shadow in that color use:

Here you see how a box with a 4 pixel `rgb(255, 100, 136)` colored shadow looks like.

```
.boxshadow{ -moz-box-shadow:4px 4px 4px  
4px rgb(255, 100, 136); -webkit-box-  
shadow:4px 4px 4px 4px rgb(255, 100, 136);  
box-shadow:4px 4px 4px 4px rgb(255, 100,  
136) }
```

Background

The CSS property to change the background color of an element to Android 4294927496 is called "background". The background property can be set on classes, ids or directly on the HTML element.

```
.background, #background, body{  
background: rgb(255, 100, 136) }
```

If only the background color should be changed can be used:

```
.background{ background-color: rgb(255,  
100, 136) }
```

This example shows the color as background, it is applied via the CSS property "background".

To optimize and compress your CSS code, you can use our [online CSS compressor and optimizer](#) based on csstidy. If you want to create a linear or radial gradient as background or border, check our [CSS Gradient Generator](#).

Hey! You found this booklet interesting? Support Converting Colors with the new Membership Option!

The pro membership hides all ads, plus gives you double the colors in the color bucket, and more awesome pro features!

[Learn more, Memberships starting at \\$2.50/m!](#)

**Follow me
on Twitter!**

@ConvertingColor