

# Converting Colors

Android(4294928026)

Have a look what the booklet for  
Android(4294928026) contains.

<b>Android(4294928026)</b> .....	3
<i><b>Conversions</b></i> .....	4
<i><b>Details</b></i> .....	6
<i><b>Harmonies</b></i> .....	11
<i><b>Previews</b></i> .....	23
<i><b>Color Blindness Simulation</b></i> .....	26
<i><b>CSS Examples</b></i> .....	29

# **Color**

**Android(4294928026)**

# Conversions

## Conversions Part 1

Format	Color
Hex	FF669A
RGB	255, 102, 154
RGB Percent	100%, 40%, 60%
CMY	0.0000, 0.6000, 0.3961
CMYK	0.00, 0.60, 0.40, 0.00
HSL	340°, 100%, 70%
HSV	340°, 60%, 100%
XYZ	51.8241, 33.0958, 34.2286
YIQ	153.6750, 74.4960, 48.6080

# Conversions

## Conversions Part 2

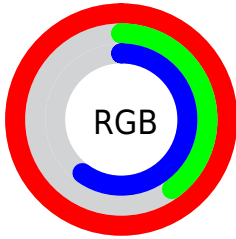
<b>Format</b>	<b>Color</b>
R <sub>Y</sub> B	255, 102, 154
Decimal	16737946
CIE Lab	64.24, 62.62, 2.35
CIE LCh	64, 62.666, 2.151
Yxy	33.0958, 0.4350, 0.2778
Android (android.graphics.Color)	4294928026 (0xFFFF669A)
YUV	153.6750, 0.1602, 88.8620
Hunter-Lab	57.5290, 60.1233, 4.9940

# Details

The Android color `4294928026` is a light color, and the websafe version is hex `FF6699`. A complement of this color would be `4284940235`, and the grayscale version is `4288322202`.

A 20% lighter version of the original color is `4294942672`, and `4290914663` is the 20% darker color. If you saturate the color by 10%, you get `4294921609`, and if you desaturate by 10%, it is `4294934699`.

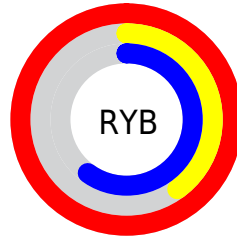
# Distribution



Red (100%)

Green (40%)

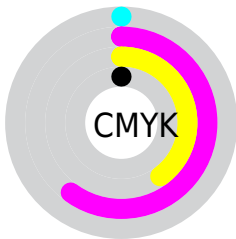
Blue (60%)



Red (100%)

Yellow (40%)

Blue (60%)

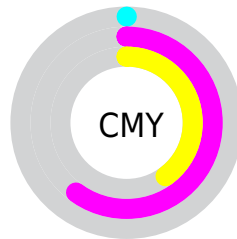


Cyan (0%)

Magenta (60%)

Yellow (40%)

Black (0%)



Cyan (0%)

Magenta (60%)

Yellow (40%)

# Brightness & Saturation Gradients

These gradients show how the Android color 4294928026 changes by changing the brightness by 10 percent. The first figure shows a shift by +10% for each color and the second figure -10%.

Similar to the brightness gradients but the following saturation gradients show a change of the Android color 4294928026 by changing the saturation by 10% instead.





4294928026



4294928026

4294967295



4292888960



4294942672



4290914663



4294950124



4288938063



4294957567



4286971961



4294965247



4285071395



4283236365



4281335810



4278190080



4294928026



4294928026

 4294921609

 4294934699

 4294914936

 4294941116

 4294908263

 4294947788

 4294901847

 4294954205

 4294960878

4294967295

# Harmonies

## Analogous

The Analogous color harmony consists of three colors that are next to each other on the color wheel.



4293030865



4294928026



4294733667

# Triad

The Triadic color harmony groups three colors that are evenly spaced from another and form a triangle on the color wheel.



4294928026



4286360116



4278235134

# Complementary

The Complementary color scheme is a pair of colors which are on the opposite of each other on the color wheel.



4294928026



4284940235

# Split Complementary

Split-complementary colors differ from the complementary color scheme. The scheme consists of three colors, the original color and two neighbors of the complement color.



4278236630



4294928026



4279546469

# Square

The Square scheme is like the rectangle color scheme, but the four colors are evenly spaced on the color wheel.



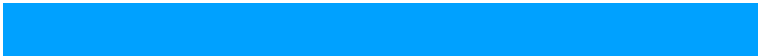
4294928026



4290091549



4278236830



4278231551

# Rectangle

The Rectangle color scheme consists of four colors that form a rectangle on the color wheel.



4294928026



4293688644



4278236830



4278235891



# Sweetspot

The Sweet Spot groups the original color and five complimentary colors.



4294928026



4294955489



4291389183



4286604141



4278190080



4286611584



# Same Dimension

The Same Dimension uses a secret algorithm to generate beautiful new colors.



4294928026



4294920070



4294933862



4286608247



4290707521



4282384406



# Inverse Universe

The Inverse Universe completely reimagines the original color for something new.



4294928026



4294920070



4284934399



4286608247



4290707521



4282384406



# Previews

## White Background



This preview shows how the Android color 4294928026 looks on a white background.

## Color Contrast Check

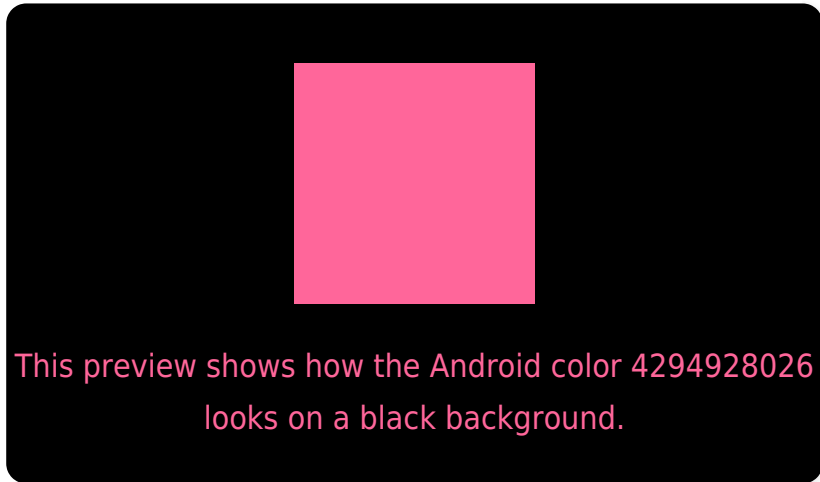
Large Text (above 18pt) WCAG AA × Fail

Any Text WCAG AA × Fail

Large Text (above 18pt) WCAG AAA × Fail

Any Text WCAG AAA × Fail

# Black Background



## Color Contrast Check

Large Text (above 18pt) WCAG AA ✓ Pass

Any Text WCAG AA ✓ Pass

Large Text (above 18pt) WCAG AAA ✓ Pass

Any Text WCAG AAA ✓ Pass

If you want to check with other color combinations, try the [Color Contrast Checker](#).



# Android 4294928026 Background



This preview shows how black text looks on a background with the Android color 4294928026.



This preview shows how white text looks on a background with the Android color 4294928026.

# Color Blindness Simulation

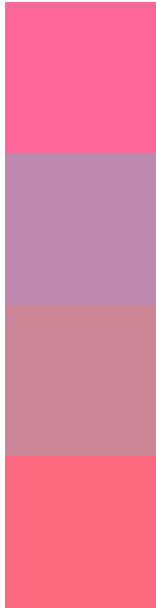
Color vision deficiency is a very complex topic, and I could not describe the different causes any better than Wikipedia does, so if you want to learn more, you should check out their [article about color blindness](#).

## Dichromacy





# Trichromacy



**Original Color**  
4294928026

**Protanomaly**  
4290545838

**Deuteranomaly**  
4291593622

**Tritanomaly**  
4294798210

# Monochromacy



**Original Color**  
4294928026

**Achromatopsia**  
4288322202

**Achromatomaly**  
4290742170

# CSS Examples

## Text

The CSS property to change the color of the text to Android 4294928026 is called "color". The color property can be set on classes, ids or directly on the HTML element.

This example shows how text in the color `rgb(255, 102, 154)` looks like.

```
.text, #text, p{  
    color:rgb(255, 102, 154)  
}
```

If you want to add a text shadow in that color use the text-shadow property, you can generate a text shadow directly with our [CSS Text Shadow Generator](#).

Here you see how black text with a 4 pixel rgb(255, 102, 154) colored shadow looks like.

```
.shadow{ text-shadow: 4px 4px 2px rgb(255, 102, 154) }
```

## Border

The CSS property to change the border of an element to Android 4294928026 is called "border". The border property can be set on classes, ids or directly on the HTML element.

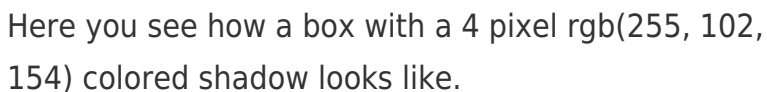
This example shows the color as border, it can be applied via the CSS property "border" or "border-color".

```
.border, #border, table{ border:4px solid rgb(255, 102, 154) }
```

If only the border color should be changed use the property `border-color`.

```
.border{ border-color:rgb(255, 102, 154) }
```

If you want to add a box shadow in that color use:



Here you see how a box with a 4 pixel `rgb(255, 102, 154)` colored shadow looks like.

```
.boxshadow{ -moz-box-shadow:4px 4px 4px  
4px rgb(255, 102, 154); -webkit-box-  
shadow:4px 4px 4px 4px rgb(255, 102, 154);  
box-shadow:4px 4px 4px 4px rgb(255, 102,  
154) }
```

# Background

The CSS property to change the background color of an element to Android 4294928026 is called "background". The background property can be set on classes, ids or directly on the HTML element.

```
.background, #background, body{  
background: rgb(255, 102, 154) }
```

If only the background color should be changed can be used:

```
.background{ background-color: rgb(255,  
102, 154) }
```

This example shows the color as background, it is applied via the CSS property "background".

To optimize and compress your CSS code, you can use our [online CSS compressor and optimizer](#) based on csstidy. If you want to create a linear or radial gradient as background or border, check our [CSS Gradient Generator](#).



Hey! You found this booklet interesting? Support Converting Colors with the new Membership Option!

The pro membership hides all ads, plus gives you double the colors in the color bucket, and more awesome pro features!

**[Learn more, Memberships starting at \\$2.50/m!](#)**

**Follow me  
on Twitter!**

@ConvertingColor