

Converting Colors

Android(4294928261)

Have a look what the booklet for
Android(4294928261) contains.

Android(4294928261)	3
<i>Conversions</i>	4
<i>Details</i>	6
<i>Harmonies</i>	11
<i>Previews</i>	23
<i>Color Blindness Simulation</i>	26
<i>CSS Examples</i>	29

Color

Android(4294928261)

Conversions

Conversions Part 1

Format	Color
Hex	FF6785
RGB	255, 103, 133
RGB Percent	100%, 40%, 52%
CMY	0.0000, 0.5961, 0.4784
CMYK	0.00, 0.60, 0.48, 0.00
HSL	348°, 100%, 70%
HSV	348°, 60%, 100%
XYZ	50.3239, 32.6540, 25.8408
YIQ	151.8680, 80.9620, 41.5540

Conversions

Conversions Part 2

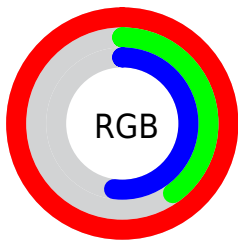
Format	Color
R_{YB}	255, 103, 133
Decimal	16738181
CIE _{Lab}	63.88, 60.19, 13.90
CIE _{LCh}	64, 61.771, 13.002
Yxy	32.6540, 0.4625, 0.3001
Android (android.graphics.Color)	4294928261 (0xFFFF6785)
YUV	151.8680, -9.3019, 90.4468
Hunter-Lab	57.1436, 57.1957, 13.1892

Details

The Android color **4294928261** is a light color, and the websafe version is hex **FF6699**. A complement of this color would be **4285005793**, and the grayscale version is **4288190616**.

A 20% lighter version of the original color is **4294942906**, and **4290849620** is the 20% darker color. If you saturate the color by 10%, you get **4294921841**, and if you desaturate by 10%, it is **4294934937**.

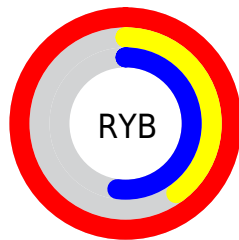
Distribution



Red (100%)

Green (40%)

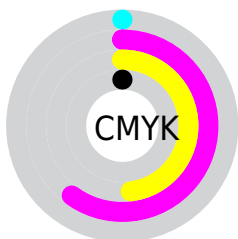
Blue (52%)



Red (100%)

Yellow (40%)

Blue (52%)

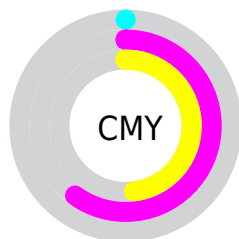


Cyan (0%)

Magenta (60%)

Yellow (48%)

Black (0%)



Cyan (0%)

Magenta (60%)

Yellow (48%)

Brightness & Saturation Gradients

These gradients show how the Android color 4294928261 changes by changing the brightness by 10 percent. The first figure shows a shift by +10% for each color and the second figure -10%.

Similar to the brightness gradients but the following saturation gradients show a change of the Android color 4294928261 by changing the saturation by 10% instead.



4294928261



4294928261

4294967295



4292889196



4294942906



4290849620



4294950102



4288872509



4294957554



4286906408



4294965247



4284940308



4283105281



4281139202



4278190080



4294928261



4294928261

 4294921841

 4294934937

 4294915164

 4294941358

 4294908488

 4294947778

 4294902067

 4294954455

 4294901810

 4294961131

4294967295

Harmonies

Analogous

The Analogous color harmony consists of three colors that are next to each other on the color wheel.



4293815484



4294928261



4294145618

Triad

The Triadic color harmony groups three colors that are evenly spaced from another and form a triangle on the color wheel.



4294928261



4284722245



4278233855

Complementary

The Complementary color scheme is a pair of colors which are on the opposite of each other on the color wheel.



4294928261



4285005793

Split Complementary

Split-complementary colors differ from the complementary color scheme. The scheme consists of three colors, the original color and two neighbors of the complement color.



4278236133



4294928261



4278236025

Square

The Square scheme is like the rectangle color scheme, but the four colors are evenly spaced on the color wheel.



4294928261



4288782370



4278236594



4284193279

Rectangle

The Rectangle color scheme consists of four colors that form a rectangle on the color wheel.



4294928261



4292773174



4278236594



4278234620

Sweetspot

The Sweet Spot groups the original color and five complimentary colors.



4294928261



4294955482



4292962303



4286604137



4278190080



4286611584

Same Dimension

The Same Dimension uses a secret algorithm to generate beautiful new colors.



4294928261



4294920044



4294940007



4286608245



4290707494



4282384397

Inverse Universe

The Inverse Universe completely reimagines the original color for something new.



4294928261



4294920044



4284994047



4286608245



4290707494



4282384397

Previews

White Background



This preview shows how the Android color 4294928261 looks on a white background.

Color Contrast Check

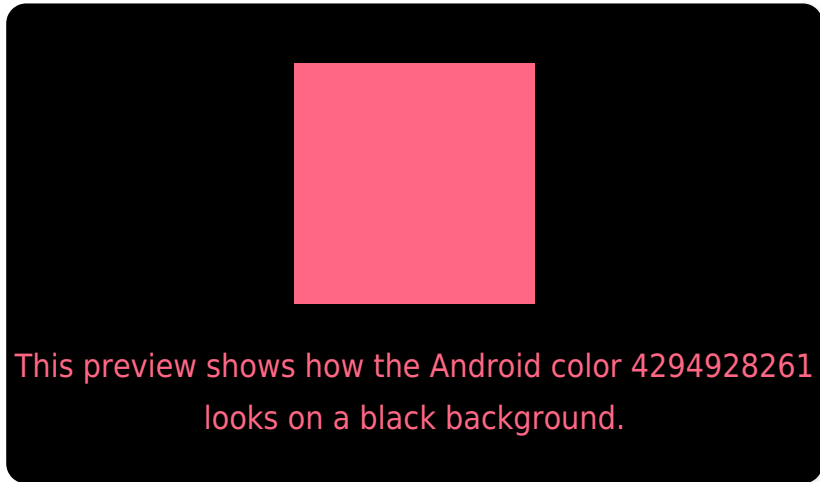
Large Text (above 18pt) WCAG AA × Fail

Any Text WCAG AA × Fail

Large Text (above 18pt) WCAG AAA × Fail

Any Text WCAG AAA × Fail

Black Background



Color Contrast Check

Large Text (above 18pt) WCAG AA ✓ Pass

Any Text WCAG AA ✓ Pass

Large Text (above 18pt) WCAG AAA ✓ Pass

Any Text WCAG AAA ✓ Pass

If you want to check with other color combinations, try the [Color Contrast Checker](#).

Android 4294928261 Background



This preview shows how black text looks on a background with the Android color 4294928261.

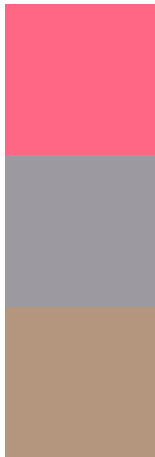


This preview shows how white text looks on a background with the Android color 4294928261.

Color Blindness Simulation

Color vision deficiency is a very complex topic, and I could not describe the different causes any better than Wikipedia does, so if you want to learn more, you should check out their [article about color blindness](#).

Dichromacy

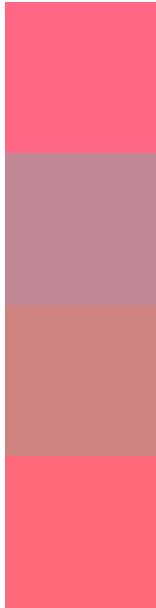


Original Color
4294928261

Protanopia
4288453280

Deuteranopia
4290024830

Trichromacy



Original Color
4294928261

Protanomaly
4290807702

Deuteranomaly
4291789953

Tritanomaly
4294863481

Monochromacy



Original Color
4294928261

Achromatopsia
4288190616

Achromatomaly
4290610833

CSS Examples

Text

The CSS property to change the color of the text to Android 4294928261 is called "color". The color property can be set on classes, ids or directly on the HTML element.

This example shows how text in the color `rgb(255, 103, 133)` looks like.

```
.text, #text, p{  
    color:rgb(255, 103, 133)  
}
```

If you want to add a text shadow in that color use the text-shadow property, you can generate a text shadow directly with our [CSS Text Shadow Generator](#).

Here you see how black text with a 4 pixel rgb(255, 103, 133) colored shadow looks like.

```
.shadow{ text-shadow: 4px 4px 2px rgb(255, 103, 133) }
```

Border

The CSS property to change the border of an element to Android 4294928261 is called "border". The border property can be set on classes, ids or directly on the HTML element.

This example shows the color as border, it can be applied via the CSS property "border" or "border-color".

```
.border, #border, table{ border:4px solid rgb(255, 103, 133) }
```

If only the border color should be changed use the property `border-color`.

```
.border{ border-color:rgb(255, 103, 133) }
```

If you want to add a box shadow in that color use:

Here you see how a box with a 4 pixel `rgb(255, 103, 133)` colored shadow looks like.

```
.boxshadow{ -moz-box-shadow:4px 4px 4px  
4px rgb(255, 103, 133); -webkit-box-  
shadow:4px 4px 4px 4px rgb(255, 103, 133);  
box-shadow:4px 4px 4px 4px rgb(255, 103,  
133) }
```

Background

The CSS property to change the background color of an element to Android 4294928261 is called "background". The background property can be set on classes, ids or directly on the HTML element.

```
.background, #background, body{  
background: rgb(255, 103, 133) }
```

If only the background color should be changed can be used:

```
.background{ background-color: rgb(255,  
103, 133) }
```

This example shows the color as background, it is applied via the CSS property "background".

To optimize and compress your CSS code, you can use our [online CSS compressor and optimizer](#) based on csstidy. If you want to create a linear or radial gradient as background or border, check our [CSS Gradient Generator](#).

Hey! You found this booklet interesting? Support Converting Colors with the new Membership Option!

The pro membership hides all ads, plus gives you double the colors in the color bucket, and more awesome pro features!

[Learn more, Memberships starting at \\$2.50/m!](#)

**Follow me
on Twitter!**

@ConvertingColor