

# Converting Colors

Android(4294928780)

Have a look what the booklet for  
Android(4294928780) contains.

<b>Android(4294928780)</b> .....	3
<i><b>Conversions</b></i> .....	4
<i><b>Details</b></i> .....	6
<i><b>Harmonies</b></i> .....	11
<i><b>Previews</b></i> .....	23
<i><b>Color Blindness Simulation</b></i> .....	26
<i><b>CSS Examples</b></i> .....	29

# **Color**

**Android(4294928780)**

# Conversions

## Conversions Part 1

Format	Color
Hex	FF698C
RGB	255, 105, 140
RGB Percent	100%, 41%, 55%
CMY	0.0000, 0.5882, 0.4510
CMYK	0.00, 0.59, 0.45, 0.00
HSL	346°, 100%, 71%
HSV	346°, 59%, 100%
XYZ	51.0252, 33.2566, 28.5408
YIQ	153.8400, 78.1650, 42.6850

# Conversions

## Conversions Part 2

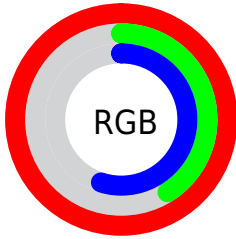
<b>Format</b>	<b>Color</b>
<b>R<sub>YB</sub></b>	255, 105, 140
Decimal	16738700
CIE <sub>Lab</sub>	64.37, 59.95, 10.57
CIE <sub>LCh</sub>	64, 60.877, 9.998
Yxy	33.2566, 0.4523, 0.2948
Android (android.graphics.Color)	4294928780 (0xFFFF698C)
YUV	153.8400, -6.8231, 88.7173
Hunter-Lab	57.6685, 57.0171, 11.0247

# Details

The Android color **4294928780** is a light color, and the websafe version is hex **FF6699**. A complement of this color would be **4285136860**, and the grayscale version is **4288322202**.

A 20% lighter version of the original color is **4294943169**, and **4290915930** is the 20% darker color. If you saturate the color by 10%, you get **4294922360**, and if you desaturate by 10%, it is **4294935456**.

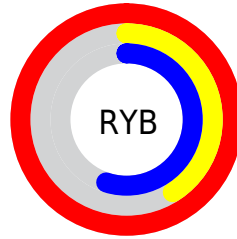
# Distribution



Red (100%)

Green (41%)

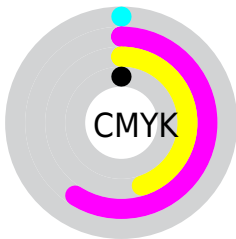
Blue (55%)



Red (100%)

Yellow (41%)

Blue (55%)

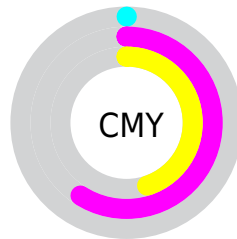


Cyan (0%)

Magenta (59%)

Yellow (45%)

Black (0%)



Cyan (0%)

Magenta (59%)

Yellow (45%)

# Brightness & Saturation Gradients

These gradients show how the Android color 4294928780 changes by changing the brightness by 10 percent. The first figure shows a shift by +10% for each color and the second figure -10%.

Similar to the brightness gradients but the following saturation gradients show a change of the Android color 4294928780 by changing the saturation by 10% instead.





4294928780



4294928780

4294967295



4292889971



4294943169



4290915930



4294950621



4288872515



4294958074



4286971949



4294965759



4285005849



4283170817



4281270274



4278190080



4294928780



4294928780

 4294922360

 4294935456

 4294915685

 4294941875

 4294909009

 4294948295

 4294902590

 4294954970

 4294901820

 4294961646

4294967295

# Harmonies

## Analogous

The Analogous color harmony consists of three colors that are next to each other on the color wheel.



4293619906



4294928780



4294342233

# Triad

The Triadic color harmony groups three colors that are evenly spaced from another and form a triangle on the color wheel.



4294928780



4285312067



4278234367

# Complementary

The Complementary color scheme is a pair of colors which are on the opposite of each other on the color wheel.



4294928780



4285136860

# Split Complementary

Split-complementary colors differ from the complementary color scheme. The scheme consists of three colors, the original color and two neighbors of the complement color.



4278236385



4294928780



4278236277

# Square

The Square scheme is like the rectangle color scheme, but the four colors are evenly spaced on the color wheel.



4294928780



4289240869



4278236845



4283407615

# Rectangle

The Rectangle color scheme consists of four colors that form a rectangle on the color wheel.



4294928780



4293100860



4278236845



4278235130



# Sweetspot

The Sweet Spot groups the original color and five complimentary colors.



4294928780



4294955484



4292635135



4286604138



4278190080



4286611584



# Same Dimension

The Same Dimension uses a secret algorithm to generate beautiful new colors.



4294928780



4294920820



4294938985



4286608246



4290707501



4282384399



# Inverse Universe

The Inverse Universe completely reimagines the original color for something new.



4294928780



4294920820



4285126655



4286608246



4290707501



4282384399



# Previews

## White Background



This preview shows how the Android color 4294928780 looks on a white background.

## Color Contrast Check

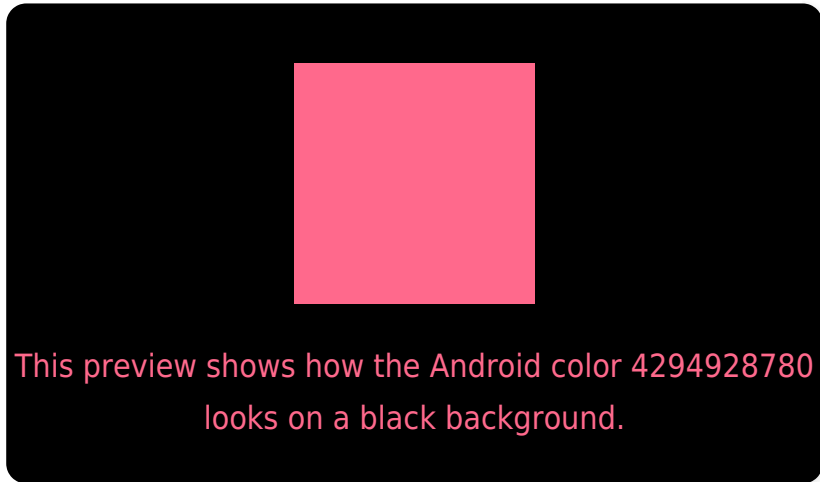
Large Text (above 18pt) WCAG AA × Fail

Any Text WCAG AA × Fail

Large Text (above 18pt) WCAG AAA × Fail

Any Text WCAG AAA × Fail

# Black Background



## Color Contrast Check

Large Text (above 18pt) WCAG AA ✓ Pass

Any Text WCAG AA ✓ Pass

Large Text (above 18pt) WCAG AAA ✓ Pass

Any Text WCAG AAA ✓ Pass

If you want to check with other color combinations, try the [Color Contrast Checker](#).



# Android 4294928780 Background



This preview shows how black text looks on a background with the Android color 4294928780.



This preview shows how white text looks on a background with the Android color 4294928780.

# Color Blindness Simulation

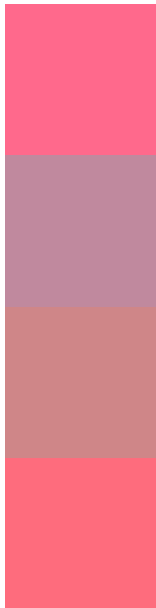
Color vision deficiency is a very complex topic, and I could not describe the different causes any better than Wikipedia does, so if you want to learn more, you should check out their [article about color blindness](#).

## Dichromacy





# Trichromacy



**Original Color**  
4294928780

**Protanomaly**  
4290808222

**Deuteranomaly**  
4291790472

**Tritanomaly**  
4294863997

# Monochromacy



**Original Color**  
4294928780

**Achromatopsia**  
4288322202

**Achromatomaly**  
4290742421

# CSS Examples

## Text

The CSS property to change the color of the text to Android 4294928780 is called "color". The color property can be set on classes, ids or directly on the HTML element.

This example shows how text in the color `rgb(255, 105, 140)` looks like.

```
.text, #text, p{  
    color:rgb(255, 105, 140)  
}
```

If you want to add a text shadow in that color use the text-shadow property, you can generate a text shadow directly with our [CSS Text Shadow Generator](#).

Here you see how black text with a 4 pixel rgb(255, 105, 140) colored shadow looks like.

```
.shadow{ text-shadow: 4px 4px 2px rgb(255, 105, 140) }
```

## Border

The CSS property to change the border of an element to Android 4294928780 is called "border". The border property can be set on classes, ids or directly on the HTML element.

This example shows the color as border, it can be applied via the CSS property "border" or "border-color".

```
.border, #border, table{ border:4px solid rgb(255, 105, 140) }
```

If only the border color should be changed use the property `border-color`.

```
.border{ border-color:rgb(255, 105, 140) }
```

If you want to add a box shadow in that color use:

Here you see how a box with a 4 pixel `rgb(255, 105, 140)` colored shadow looks like.

```
.boxshadow{ -moz-box-shadow:4px 4px 4px  
4px rgb(255, 105, 140); -webkit-box-  
shadow:4px 4px 4px 4px rgb(255, 105, 140);  
box-shadow:4px 4px 4px 4px rgb(255, 105,  
140) }
```

# Background

The CSS property to change the background color of an element to Android 4294928780 is called "background". The background property can be set on classes, ids or directly on the HTML element.

```
.background, #background, body{  
background: rgb(255, 105, 140) }
```

If only the background color should be changed can be used:

```
.background{ background-color: rgb(255,  
105, 140) }
```

This example shows the color as background, it is applied via the CSS property "background".

To optimize and compress your CSS code, you can use our [online CSS compressor and optimizer](#) based on csstidy. If you want to create a linear or radial gradient as background or border, check our [CSS Gradient Generator](#).



Hey! You found this booklet interesting? Support Converting Colors with the new Membership Option!

The pro membership hides all ads, plus gives you double the colors in the color bucket, and more awesome pro features!

**[Learn more, Memberships starting at \\$2.50/m!](#)**

**Follow me  
on Twitter!**

@ConvertingColor