

Converting Colors

Android(4294929282)

Have a look what the booklet for
Android(4294929282) contains.

Android(4294929282)	3
<i>Conversions</i>	4
<i>Details</i>	6
<i>Harmonies</i>	11
<i>Previews</i>	23
<i>Color Blindness Simulation</i>	26
<i>CSS Examples</i>	29

Color

Android(4294929282)

Conversions

Conversions Part 1

Format	Color
Hex	FF6B82
RGB	255, 107, 130
RGB Percent	100%, 42%, 51%
CMY	0.0000, 0.5804, 0.4902
CMYK	0.00, 0.58, 0.49, 0.00
HSL	351°, 100%, 71%
HSV	351°, 58%, 100%
XYZ	50.5270, 33.3871, 24.9004
YIQ	153.8740, 80.8250, 38.5290

Conversions

Conversions Part 2

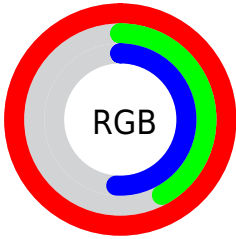
Format	Color
R_{YB}	255, 107, 130
Decimal	16739202
CIE _{Lab}	64.47, 58.17, 16.44
CIE _{LCh}	64, 60.452, 15.782
Yxy	33.3871, 0.4643, 0.3068
Android (android.graphics.Color)	4294929282 (0xFFFF6B82)
YUV	153.8740, -11.7699, 88.6875
Hunter-Lab	57.7816, 54.9712, 14.8967

Details

The Android color **4294929282** is a light color, and the websafe version is hex **FF6666**. A complement of this color would be **4285267944**, and the grayscale version is **4288322202**.

A 20% lighter version of the original color is **4294943671**, and **4290851153** is the 20% darker color. If you saturate the color by 10%, you get **4294922860**, and if you desaturate by 10%, it is **4294935960**.

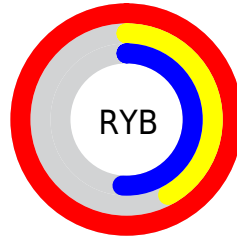
Distribution



Red (100%)

Green (42%)

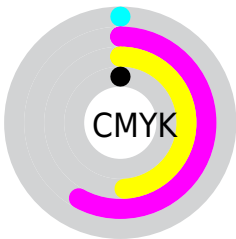
Blue (51%)



Red (100%)

Yellow (42%)

Blue (51%)

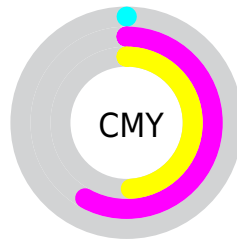


Cyan (0%)

Magenta (58%)

Yellow (49%)

Black (0%)



Cyan (0%)

Magenta (58%)

Yellow (49%)

Brightness & Saturation Gradients

These gradients show how the Android color 4294929282 changes by changing the brightness by 10 percent. The first figure shows a shift by +10% for each color and the second figure -10%.

Similar to the brightness gradients but the following saturation gradients show a change of the Android color 4294929282 by changing the saturation by 10% instead.

 4294929282

 4294929282

4294967295

 4292890473

 4294943671

 4290851153

 4294951122

 4288874298

 4294958575

 4286906405

 4294966015

 4284940305

 4283105281

 4281204738

 4278190080

 4294929282

 4294929282

■ 4294922860

■ 4294935960

■ 4294916183

■ 4294942381

■ 4294909761

■ 4294949059

■ 4294903084

■ 4294955480

■ 4294901800

■ 4294962158

4294967295

Harmonies

Analogous

The Analogous color harmony consists of three colors that are next to each other on the color wheel.



4294012600



4294929282



4294015825

Triad

The Triadic color harmony groups three colors that are evenly spaced from another and form a triangle on the color wheel.



4294929282



4284460621



4278233855

Complementary

The Complementary color scheme is a pair of colors which are on the opposite of each other on the color wheel.



4294929282



4285267944

Split Complementary

Split-complementary colors differ from the complementary color scheme. The scheme consists of three colors, the original color and two neighbors of the complement color.



4278236137



4294929282



4278236544

Square

The Square scheme is like the rectangle color scheme, but the four colors are evenly spaced on the color wheel.



4294929282



4288586281



4278236856



4285307135

Rectangle

The Rectangle color scheme consists of four colors that form a rectangle on the color wheel.



4294929282



4292643127



4278236856



4278234878

Sweetspot

The Sweet Spot groups the original color and five complimentary colors.



4294929282



4294956250



4293291007



4286604906



4278190080



4286611584

Same Dimension

The Same Dimension uses a secret algorithm to generate beautiful new colors.



4294929282



4294921576



4294941803



4286608245



4290707486



4282384394

Inverse Universe

The Inverse Universe completely reimagines the original color for something new.



4294929282



4294921576



4285255423



4286608245



4290707486



4282384394

Previews

White Background



This preview shows how the Android color 4294929282 looks on a white background.

Color Contrast Check

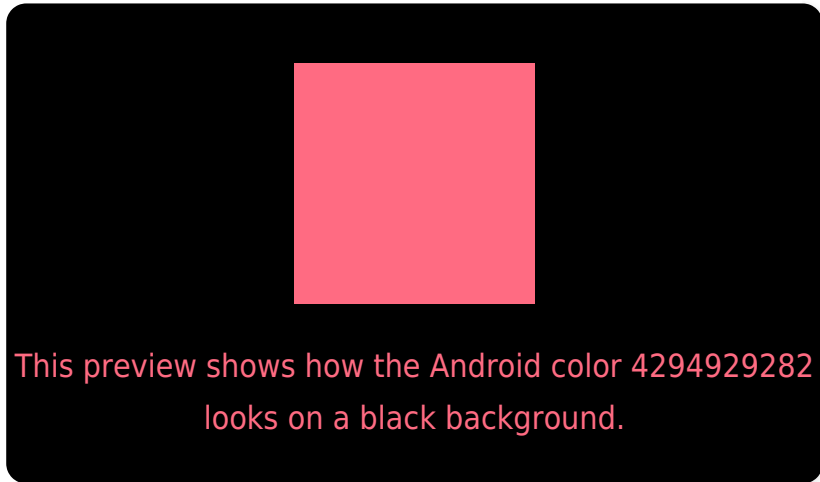
Large Text (above 18pt) WCAG AA × Fail

Any Text WCAG AA × Fail

Large Text (above 18pt) WCAG AAA × Fail

Any Text WCAG AAA × Fail

Black Background



Color Contrast Check

Large Text (above 18pt) WCAG AA ✓ Pass

Any Text WCAG AA ✓ Pass

Large Text (above 18pt) WCAG AAA ✓ Pass

Any Text WCAG AAA ✓ Pass

If you want to check with other color combinations, try the [Color Contrast Checker](#).

Android 4294929282 Background



This preview shows how black text looks on a background with the Android color 4294929282.



This preview shows how white text looks on a background with the Android color 4294929282.

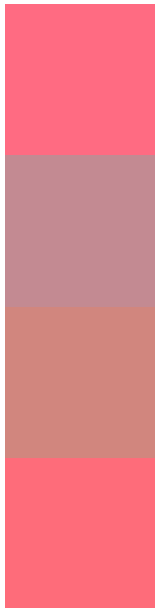
Color Blindness Simulation

Color vision deficiency is a very complex topic, and I could not describe the different causes any better than Wikipedia does, so if you want to learn more, you should check out their [article about color blindness](#).

Dichromacy



Trichromacy



Original Color
4294929282

Protanomaly
4291005074

Deuteranomaly
4291921534

Tritanomaly
4294863994

Monochromacy



Original Color
4294929282

Achromatopsia
4288322202

Achromatomaly
4290742673

CSS Examples

Text

The CSS property to change the color of the text to Android 4294929282 is called "color". The color property can be set on classes, ids or directly on the HTML element.

This example shows how text in the color `rgb(255, 107, 130)` looks like.

```
.text, #text, p{  
    color:rgb(255, 107, 130)  
}
```

If you want to add a text shadow in that color use the text-shadow property, you can generate a text shadow directly with our [CSS Text Shadow Generator](#).

Here you see how black text with a 4 pixel rgb(255, 107, 130) colored shadow looks like.

```
.shadow{ text-shadow: 4px 4px 2px rgb(255, 107, 130) }
```

Border

The CSS property to change the border of an element to Android 4294929282 is called "border". The border property can be set on classes, ids or directly on the HTML element.

This example shows the color as border, it can be applied via the CSS property "border" or "border-color".

```
.border, #border, table{ border:4px solid rgb(255, 107, 130) }
```

If only the border color should be changed use the property `border-color`.

```
.border{ border-color:rgb(255, 107, 130) }
```

If you want to add a box shadow in that color use:

Here you see how a box with a 4 pixel `rgb(255, 107, 130)` colored shadow looks like.

```
.boxshadow{ -moz-box-shadow:4px 4px 4px  
4px rgb(255, 107, 130); -webkit-box-  
shadow:4px 4px 4px 4px rgb(255, 107, 130);  
box-shadow:4px 4px 4px 4px rgb(255, 107,  
130) }
```

Background

The CSS property to change the background color of an element to Android 4294929282 is called "background". The background property can be set on classes, ids or directly on the HTML element.

```
.background, #background, body{  
background: rgb(255, 107, 130) }
```

If only the background color should be changed can be used:

```
.background{ background-color: rgb(255,  
107, 130) }
```

This example shows the color as background, it is applied via the CSS property "background".

To optimize and compress your CSS code, you can use our [online CSS compressor and optimizer](#) based on csstidy. If you want to create a linear or radial gradient as background or border, check our [CSS Gradient Generator](#).

Hey! You found this booklet interesting? Support Converting Colors with the new Membership Option!

The pro membership hides all ads, plus gives you double the colors in the color bucket, and more awesome pro features!

[Learn more, Memberships starting at \\$2.50/m!](#)

**Follow me
on Twitter!**

@ConvertingColor