

Converting Colors

Android(4294933041)

Have a look what the booklet for
Android(4294933041) contains.

Android(4294933041)	3
<i>Conversions</i>	4
<i>Details</i>	6
<i>Harmonies</i>	11
<i>Previews</i>	23
<i>Color Blindness Simulation</i>	26
<i>CSS Examples</i>	29

Color

Android(4294933041)

Conversions

Conversions Part 1

Format	Color
Hex	FF7A31
RGB	255, 122, 49
RGB Percent	100%, 48%, 19%
CMY	0.0000, 0.5216, 0.8078
CMYK	0.00, 0.52, 0.81, 0.00
HSL	21°, 100%, 60%
HSV	21°, 81%, 100%
XYZ	48.7539, 35.4008, 7.1692
YIQ	153.4450, 102.7010, 5.4930

Conversions

Conversions Part 2

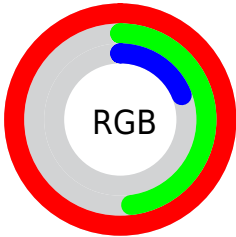
Format	Color
R _Y B	255, 162, 49
Decimal	16742961
CIE Lab	66.06, 46.54, 60.72
CIE LCh	66, 76.506, 52.531
Yxy	35.4008, 0.5339, 0.3876
Android (android.graphics.Color)	4294933041 (0xFFFF7A31)
YUV	153.4450, -51.4914, 89.0637
Hunter-Lab	59.4986, 42.1427, 34.5050

Details

The Android color **4294933041** is a dark color, and the websafe version is hex **FF6633**. The color can be described as middle washed orange. A complement of this color would be **4281448191**, and the grayscale version is **4288322202**.

A 20% lighter version of the original color is **4294947173**, and **4290725120** is the 20% darker color. If you saturate the color by 10%, you get **4294928920**, and if you desaturate by 10%, it is **4294937163**.

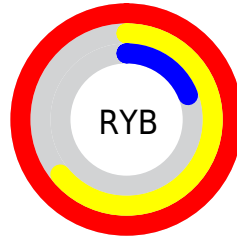
Distribution



Red (100%)

Green (48%)

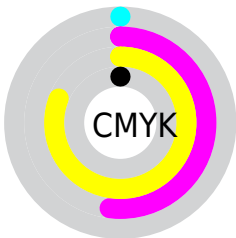
Blue (19%)



Red (100%)

Yellow (64%)

Blue (19%)

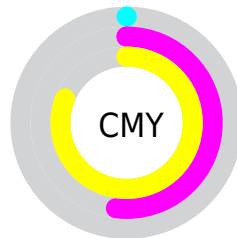


Cyan (0%)

Magenta (52%)

Yellow (81%)

Black (0%)



Cyan (0%)

Magenta (52%)

Yellow (81%)

Brightness & Saturation Gradients

These gradients show how the Android color 4294933041 changes by changing the brightness by 10 percent. The first figure shows a shift by +10% for each color and the second figure -10%.

Similar to the brightness gradients but the following saturation gradients show a change of the Android color 4294933041 by changing the saturation by 10% instead.

 4294933041

 4294933041

4294967295

 4292828949

 4294947173

 4290725120

 4294954367

 4288686592

 4294961818

 4286646272

 4294967222

 4284612608

 4294967250

 4282712064

 4294967279

 4280942593

 4278190080

 4294933041

 4294933041

4294928920

4294937163

4294924800

4294941540

4294945662

4294950039

4294954161

4294958538

4294962660

4294967037

4294967295

Harmonies

Analogous

The Analogous color harmony consists of three colors that are next to each other on the color wheel.



4294925680



4294933041



4291794688

Triad

The Triadic color harmony groups three colors that are evenly spaced from another and form a triangle on the color wheel.



4294933041



4278239116



4286158591

Complementary

The Complementary color scheme is a pair of colors which are on the opposite of each other on the color wheel.



4294933041



4281448191

Split Complementary

Split-complementary colors differ from the complementary color scheme. The scheme consists of three colors, the original color and two neighbors of the complement color.



4278234879



4294933041



4278239443

Square

The Square scheme is like the rectangle color scheme, but the four colors are evenly spaced on the color wheel.



4294933041



4280596806



4278238207



4293031413

Rectangle

The Rectangle color scheme consists of four colors that form a rectangle on the color wheel.



4294933041



4289111552



4278238207



4280852479

Sweetspot

The Sweet Spot groups the original color and five complimentary colors.



4294933041



4294956994



4294914487



4286605403



4278190080



4286611584

Same Dimension

The Same Dimension uses a secret algorithm to generate beautiful new colors.



4294933041



4294926088



4294959153



4286609267



4290724864



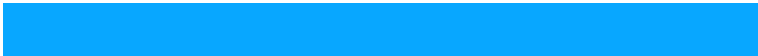
4282390272

Inverse Universe

The Inverse Universe completely reimagines the original color for something new.



4281448191



4278757375



4281422079



4285758336



4278221759



4278200640

Previews

White Background



This preview shows how the Android color 4294933041 looks on a white background.

Color Contrast Check

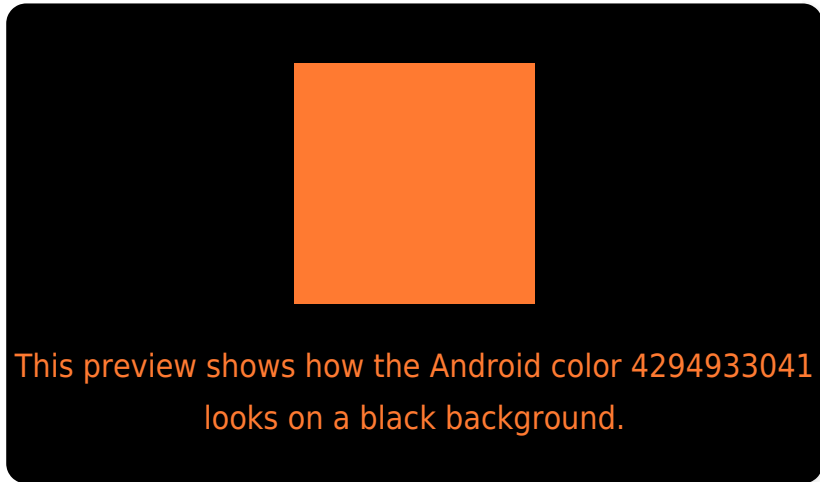
Large Text (above 18pt) WCAG AA × Fail

Any Text WCAG AA × Fail

Large Text (above 18pt) WCAG AAA × Fail

Any Text WCAG AAA × Fail

Black Background



Color Contrast Check

Large Text (above 18pt) WCAG AA ✓ Pass

Any Text WCAG AA ✓ Pass

Large Text (above 18pt) WCAG AAA ✓ Pass

Any Text WCAG AAA ✓ Pass

If you want to check with other color combinations, try the [Color Contrast Checker](#).

Android 4294933041 Background



This preview shows how black text looks on a background with the Android color 4294933041.




This preview shows how white text looks on a background with the Android color 4294933041.

Color Blindness Simulation

Color vision deficiency is a very complex topic, and I could not describe the different causes any better than Wikipedia does, so if you want to learn more, you should check out their [article about color blindness](#).

Dichromacy





Tritanopia
4294931836

Trichromacy



Original Color

4294933041



Protanomaly

4291793719



Deuteranomaly

4292775466



Tritanomaly

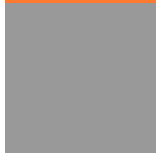
4294932321

Monochromacy



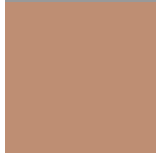
Original Color

4294933041



Achromatopsia

4288256409



Achromatomaly

4290678387

CSS Examples

Text

The CSS property to change the color of the text to Android 4294933041 is called "color". The color property can be set on classes, ids or directly on the HTML element.

This example shows how text in the color `rgb(255, 122, 49)` looks like.

```
.text, #text, p{  
    color:rgb(255, 122, 49)  
}
```

If you want to add a text shadow in that color use the text-shadow property, you can generate a text shadow directly with our [CSS Text Shadow Generator](#).

Here you see how black text with a 4 pixel rgb(255, 122, 49) colored shadow looks like.

```
.shadow{ text-shadow: 4px 4px 2px rgb(255, 122, 49) }
```

Border

The CSS property to change the border of an element to Android 4294933041 is called "border". The border property can be set on classes, ids or directly on the HTML element.

This example shows the color as border, it can be applied via the CSS property "border" or "border-color".

```
.border, #border, table{ border:4px solid rgb(255, 122, 49) }
```

If only the border color should be changed use the property `border-color`.

```
.border{ border-color:rgb(255, 122, 49) }
```

If you want to add a box shadow in that color use:

Here you see how a box with a 4 pixel `rgb(255, 122, 49)` colored shadow looks like.

```
.boxshadow{ -moz-box-shadow:4px 4px 4px  
4px rgb(255, 122, 49); -webkit-box-  
shadow:4px 4px 4px 4px rgb(255, 122, 49);  
box-shadow:4px 4px 4px 4px rgb(255, 122,  
49) }
```

Background

The CSS property to change the background color of an element to Android 4294933041 is called "background". The background property can be set on classes, ids or directly on the HTML element.

```
.background, #background, body{  
background: rgb(255, 122, 49) }
```

If only the background color should be changed can be used:

```
.background{ background-color: rgb(255,  
122, 49) }
```

This example shows the color as background, it is applied via the CSS property "background".

To optimize and compress your CSS code, you can use our [online CSS compressor and optimizer](#) based on csstidy. If you want to create a linear or radial gradient as background or border, check our [CSS Gradient Generator](#).

Hey! You found this booklet interesting? Support Converting Colors with the new Membership Option!

The pro membership hides all ads, plus gives you double the colors in the color bucket, and more awesome pro features!

[Learn more, Memberships starting at \\$2.50/m!](#)

**Follow me
on Twitter!**

@ConvertingColor