

Converting Colors

Android(4294933147)

Have a look what the booklet for
Android(4294933147) contains.

Android(4294933147)	3
<i>Conversions</i>	4
<i>Details</i>	6
<i>Harmonies</i>	11
<i>Previews</i>	23
<i>Color Blindness Simulation</i>	26
<i>CSS Examples</i>	29

Color

Android(4294933147)

Conversions

Conversions Part 1

Format	Color
Hex	FF7A9B
RGB	255, 122, 155
RGB Percent	100%, 48%, 61%
CMY	0.0000, 0.5216, 0.3922
CMYK	0.00, 0.52, 0.39, 0.00
HSL	345°, 100%, 74%
HSV	345°, 52%, 100%
XYZ	54.1159, 37.5456, 35.4052
YIQ	165.5290, 68.6750, 38.4590

Conversions

Conversions Part 2

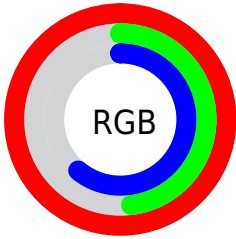
Format	Color
R _Y B	255, 122, 155
Decimal	16743067
CIE Lab	67.68, 53.70, 6.75
CIE LCh	68, 54.126, 7.167
Yxy	37.5456, 0.4259, 0.2955
Android (android.graphics.Color)	4294933147 (0xFFFF7A9B)
YUV	165.5290, -5.1908, 78.4661
Hunter-Lab	61.2745, 50.4159, 8.6336

Details

The Android color `4294933147` is a light color, and the websafe version is hex `FF6699`. A complement of this color would be `4286250974`, and the grayscale version is `4289111718`.

A 20% lighter version of the original color is `4294947537`, and `4290921320` is the 20% darker color. If you saturate the color by 10%, you get `4294926728`, and if you desaturate by 10%, it is `4294939822`.

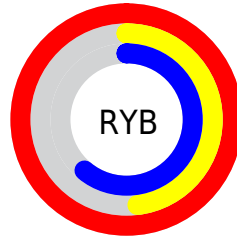
Distribution



Red (100%)

Green (48%)

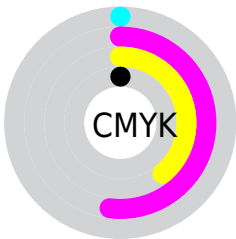
Blue (61%)



Red (100%)

Yellow (48%)

Blue (61%)

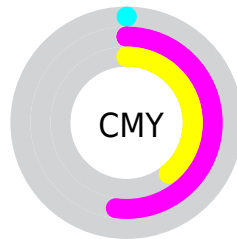


Cyan (0%)

Magenta (52%)

Yellow (39%)

Black (0%)



Cyan (0%)

Magenta (52%)

Yellow (39%)

Brightness & Saturation Gradients

These gradients show how the Android color 4294933147 changes by changing the brightness by 10 percent. The first figure shows a shift by +10% for each color and the second figure -10%.

Similar to the brightness gradients but the following saturation gradients show a change of the Android color 4294933147 by changing the saturation by 10% instead.



4294933147



4294933147

4294967295



4292960129



4294947537



4290921320



4294954734



4289013072



4294962175



4287103033



4285202468



4283367439



4281663490



4278321152



4278190080

 4294933147

 4294933147

 4294926728

 4294939822

 4294920053

 4294946241

 4294913633

 4294952917

 4294906958

 4294959336

 4294901823

 4294966011

4294967295

Harmonies

Analogous

The Analogous color harmony consists of three colors that are next to each other on the color wheel.



4293558732



4294933147



4294542188

Triad

The Triadic color harmony groups three colors that are evenly spaced from another and form a triangle on the color wheel.



4294933147



4286755667



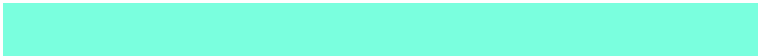
4278236414

Complementary

The Complementary color scheme is a pair of colors which are on the opposite of each other on the color wheel.



4294933147



4286250974

Split Complementary

Split-complementary colors differ from the complementary color scheme. The scheme consists of three colors, the original color and two neighbors of the complement color.



4278238175



4294933147



4281711229

Square

The Square scheme is like the rectangle color scheme, but the four colors are evenly spaced on the color wheel.



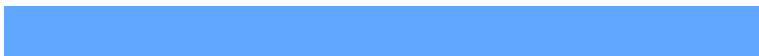
4294933147



4290160191



4278238639



4284589823

Rectangle

The Rectangle color scheme consists of four colors that form a rectangle on the color wheel.



4294933147



4293561939



4278238639



4278237174

Sweetspot

The Sweet Spot groups the original color and five complimentary colors.



4294933147



4294956768



4292770559



4286605165



4278190080



4286611584

Same Dimension

The Same Dimension uses a secret algorithm to generate beautiful new colors.



4294933147



4294925958



4294941562



4286608246



4290707503



4282384400

Inverse Universe

The Inverse Universe completely reimagines the original color for something new.



4294933147



4294925958



4286242559



4286608246



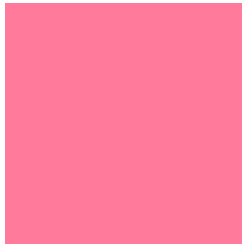
4290707503



4282384400

Previews

White Background



This preview shows how the Android color 4294933147 looks on a white background.

Color Contrast Check

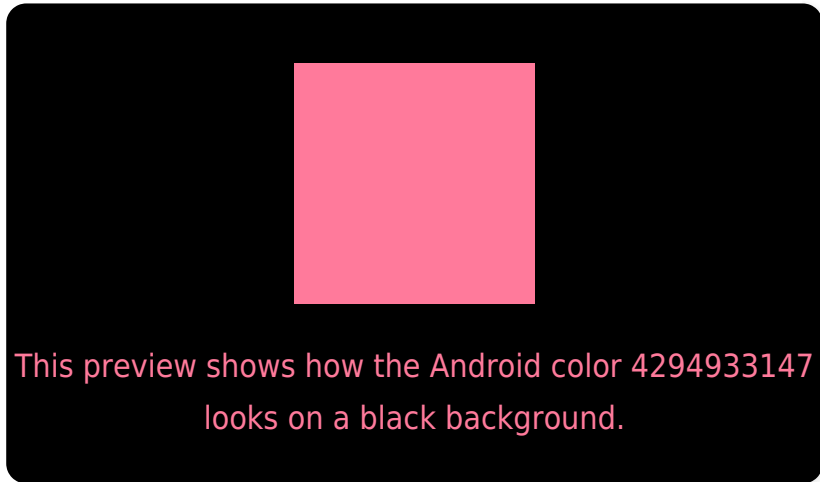
Large Text (above 18pt) WCAG AA × Fail

Any Text WCAG AA × Fail

Large Text (above 18pt) WCAG AAA × Fail

Any Text WCAG AAA × Fail

Black Background



Color Contrast Check

Large Text (above 18pt) WCAG AA ✓ Pass

Any Text WCAG AA ✓ Pass

Large Text (above 18pt) WCAG AAA ✓ Pass

Any Text WCAG AAA ✓ Pass

If you want to check with other color combinations, try the [Color Contrast Checker](#).

Android 4294933147 Background



This preview shows how black text looks on a background with the Android color 4294933147.



This preview shows how white text looks on a background with the Android color 4294933147.

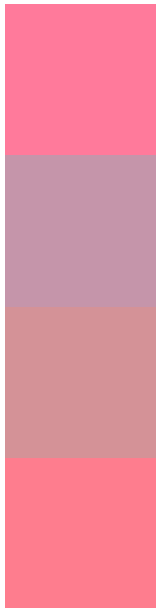
Color Blindness Simulation

Color vision deficiency is a very complex topic, and I could not describe the different causes any better than Wikipedia does, so if you want to learn more, you should check out their [article about color blindness](#).

Dichromacy



Trichromacy



Original Color
4294933147

Protanomaly
4291138986

Deuteranomaly
4292121239

Tritanomaly
4294868366

Monochromacy



Original Color
4294933147

Achromatopsia
4289111718

Achromatomaly
4291204770

CSS Examples

Text

The CSS property to change the color of the text to Android 4294933147 is called "color". The color property can be set on classes, ids or directly on the HTML element.

This example shows how text in the color `rgb(255, 122, 155)` looks like.

```
.text, #text, p{  
    color:rgb(255, 122, 155)  
}
```

If you want to add a text shadow in that color use the text-shadow property, you can generate a text shadow directly with our [CSS Text Shadow Generator](#).

Here you see how black text with a 4 pixel rgb(255, 122, 155) colored shadow looks like.

```
.shadow{ text-shadow: 4px 4px 2px rgb(255, 122, 155) }
```

Border

The CSS property to change the border of an element to Android 4294933147 is called "border". The border property can be set on classes, ids or directly on the HTML element.

This example shows the color as border, it can be applied via the CSS property "border" or "border-color".

```
.border, #border, table{ border:4px solid rgb(255, 122, 155) }
```

If only the border color should be changed use the property `border-color`.

```
.border{ border-color:rgb(255, 122, 155) }
```

If you want to add a box shadow in that color use:

Here you see how a box with a 4 pixel `rgb(255, 122, 155)` colored shadow looks like.

```
.boxshadow{ -moz-box-shadow:4px 4px 4px  
4px rgb(255, 122, 155); -webkit-box-  
shadow:4px 4px 4px 4px rgb(255, 122, 155);  
box-shadow:4px 4px 4px 4px rgb(255, 122,  
155) }
```

Background

The CSS property to change the background color of an element to Android 4294933147 is called "background". The background property can be set on classes, ids or directly on the HTML element.

```
.background, #background, body{  
background: rgb(255, 122, 155) }
```

If only the background color should be changed can be used:

```
.background{ background-color: rgb(255,  
122, 155) }
```

This example shows the color as background, it is applied via the CSS property "background".

To optimize and compress your CSS code, you can use our [online CSS compressor and optimizer](#) based on csstidy. If you want to create a linear or radial gradient as background or border, check our [CSS Gradient Generator](#).

Hey! You found this booklet interesting? Support Converting Colors with the new Membership Option!

The pro membership hides all ads, plus gives you double the colors in the color bucket, and more awesome pro features!

[Learn more, Memberships starting at \\$2.50/m!](#)

**Follow me
on Twitter!**

@ConvertingColor