

Converting Colors

Android(4294933914)

Have a look what the booklet for
Android(4294933914) contains.

Android(4294933914)	3
<i>Conversions</i>	4
<i>Details</i>	6
<i>Harmonies</i>	11
<i>Previews</i>	23
<i>Color Blindness Simulation</i>	26
<i>CSS Examples</i>	29

Color

Android(4294933914)

Conversions

Conversions Part 1

Format	Color
Hex	FF7D9A
RGB	255, 125, 154
RGB Percent	100%, 49%, 60%
CMY	0.0000, 0.5098, 0.3961
CMYK	0.00, 0.51, 0.40, 0.00
HSL	347°, 100%, 75%
HSV	347°, 51%, 100%
XYZ	54.4064, 38.2603, 35.0893
YIQ	167.1760, 68.1710, 36.5790

Conversions

Conversions Part 2

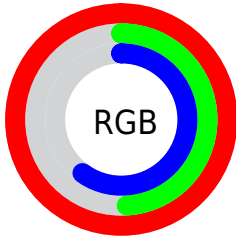
Format	Color
R _Y B	255, 125, 154
Decimal	16743834
CIE Lab	68.21, 52.17, 8.07
CIE LCh	68, 52.790, 8.797
Yxy	38.2603, 0.4259, 0.2995
Android (android.graphics.Color)	4294933914 (0xFFFF7D9A)
YUV	167.1760, -6.4958, 77.0216
Hunter-Lab	61.8549, 48.7589, 9.6642

Details

The Android color `4294933914` is a light color, and the websafe version is hex `FF6699`. A complement of this color would be `4286447586`, and the grayscale version is `4289177511`.

A 20% lighter version of the original color is `4294948304`, and `4290987623` is the 20% darker color. If you saturate the color by 10%, you get `4294927494`, and if you desaturate by 10%, it is `4294940590`.

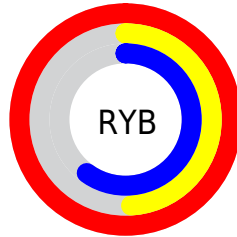
Distribution



Red (100%)

Green (49%)

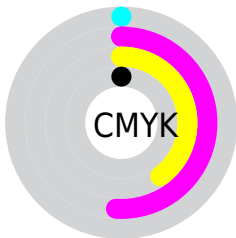
Blue (60%)



Red (100%)

Yellow (49%)

Blue (60%)

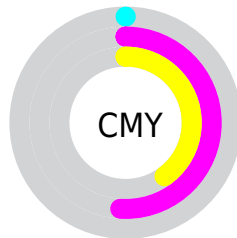


Cyan (0%)

Magenta (51%)

Yellow (40%)

Black (0%)



Cyan (0%)

Magenta (51%)

Yellow (40%)

Brightness & Saturation Gradients

These gradients show how the Android color 4294933914 changes by changing the brightness by 10 percent. The first figure shows a shift by +10% for each color and the second figure -10%.

Similar to the brightness gradients but the following saturation gradients show a change of the Android color 4294933914 by changing the saturation by 10% instead.

 4294933914

 4294933914

4294967295

 4292960896

 4294948304

 4290987623

 4294955500

 4289014351

 4294962943

 4287103289

 4285202467

 4283367438

 4281663490

 4278452224

 4278190080

■ 4294933914

■ 4294933914

■ 4294927494

■ 4294940590

■ 4294920818

■ 4294947010

■ 4294914399

■ 4294953685

■ 4294907723

■ 4294960105

■ 4294901817

■ 4294966781

4294967295

Harmonies

Analogous

The Analogous color harmony consists of three colors that are next to each other on the color wheel.



4293690314



4294933914



4294477421

Triad

The Triadic color harmony groups three colors that are evenly spaced from another and form a triangle on the color wheel.



4294933914



4286690649



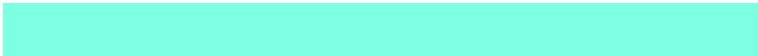
4278236671

Complementary

The Complementary color scheme is a pair of colors which are on the opposite of each other on the color wheel.



4294933914



4286447586

Split Complementary

Split-complementary colors differ from the complementary color scheme. The scheme consists of three colors, the original color and two neighbors of the complement color.



4278238433



4294933914



4281777282

Square

The Square scheme is like the rectangle color scheme, but the four colors are evenly spaced on the color wheel.



4294933914



4290029635



4278238899



4285310975

Rectangle

The Rectangle color scheme consists of four colors that form a rectangle on the color wheel.



4294933914



4293431637



4278238899



4278237431

Sweetspot

The Sweet Spot groups the original color and five complimentary colors.



4294933914



4294957537



4292967935



4286605678



4278190080



4286611584

Same Dimension

The Same Dimension uses a secret algorithm to generate beautiful new colors.



4294933914



4294927238



4294942845



4286608246



4290707499



4282384398

Inverse Universe

The Inverse Universe completely reimagines the original color for something new.



4294933914



4294927238



4286438655



4286608246



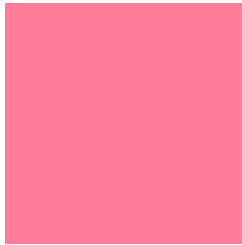
4290707499



4282384398

Previews

White Background



This preview shows how the Android color 4294933914 looks on a white background.

Color Contrast Check

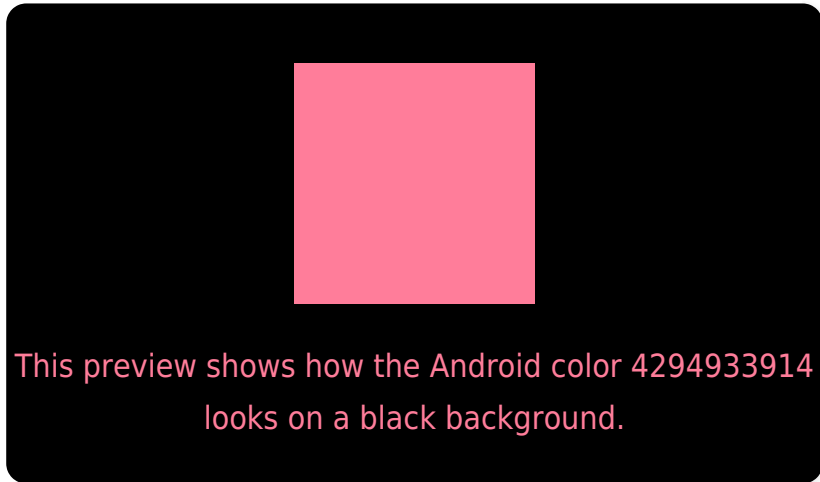
Large Text (above 18pt) WCAG AA × Fail

Any Text WCAG AA × Fail

Large Text (above 18pt) WCAG AAA × Fail

Any Text WCAG AAA × Fail

Black Background



Color Contrast Check

Large Text (above 18pt) WCAG AA ✓ Pass

Any Text WCAG AA ✓ Pass

Large Text (above 18pt) WCAG AAA ✓ Pass

Any Text WCAG AAA ✓ Pass

If you want to check with other color combinations, try the [Color Contrast Checker](#).

Android 4294933914 Background



This preview shows how black text looks on a background with the Android color 4294933914.



This preview shows how white text looks on a background with the Android color 4294933914.

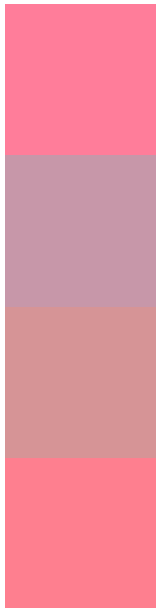
Color Blindness Simulation

Color vision deficiency is a very complex topic, and I could not describe the different causes any better than Wikipedia does, so if you want to learn more, you should check out their [article about color blindness](#).

Dichromacy



Trichromacy



Original Color
4294933914

Protanomaly
4291270569

Deuteranomaly
4292252822

Tritanomaly
4294868879

Monochromacy



Original Color
4294933914

Achromatopsia
4289177511

Achromatomaly
4291270818

CSS Examples

Text

The CSS property to change the color of the text to Android 4294933914 is called "color". The color property can be set on classes, ids or directly on the HTML element.

This example shows how text in the color `rgb(255, 125, 154)` looks like.

```
.text, #text, p{  
    color:rgb(255, 125, 154)  
}
```

If you want to add a text shadow in that color use the text-shadow property, you can generate a text shadow directly with our [CSS Text Shadow Generator](#).

Here you see how black text with a 4 pixel rgb(255, 125, 154) colored shadow looks like.

```
.shadow{ text-shadow: 4px 4px 2px rgb(255, 125, 154) }
```

Border

The CSS property to change the border of an element to Android 4294933914 is called "border". The border property can be set on classes, ids or directly on the HTML element.

This example shows the color as border, it can be applied via the CSS property "border" or "border-color".

```
.border, #border, table{ border:4px solid rgb(255, 125, 154) }
```

If only the border color should be changed use the property `border-color`.

```
.border{ border-color:rgb(255, 125, 154) }
```

If you want to add a box shadow in that color use:

Here you see how a box with a 4 pixel `rgb(255, 125, 154)` colored shadow looks like.

```
.boxshadow{ -moz-box-shadow:4px 4px 4px  
4px rgb(255, 125, 154); -webkit-box-  
shadow:4px 4px 4px 4px rgb(255, 125, 154);  
box-shadow:4px 4px 4px 4px rgb(255, 125,  
154) }
```

Background

The CSS property to change the background color of an element to Android 4294933914 is called "background". The background property can be set on classes, ids or directly on the HTML element.

```
.background, #background, body{  
background: rgb(255, 125, 154) }
```

If only the background color should be changed can be used:

```
.background{ background-color: rgb(255,  
125, 154) }
```

This example shows the color as background, it is applied via the CSS property "background".

To optimize and compress your CSS code, you can use our [online CSS compressor and optimizer](#) based on csstidy. If you want to create a linear or radial gradient as background or border, check our [CSS Gradient Generator](#).

Hey! You found this booklet interesting? Support Converting Colors with the new Membership Option!

The pro membership hides all ads, plus gives you double the colors in the color bucket, and more awesome pro features!

[Learn more, Memberships starting at \\$2.50/m!](#)

**Follow me
on Twitter!**

@ConvertingColor