

Converting Colors

Android(4294936389)

Have a look what the booklet for
Android(4294936389) contains.

Android(4294936389)	3
<i>Conversions</i>	4
<i>Details</i>	6
<i>Harmonies</i>	11
<i>Previews</i>	23
<i>Color Blindness Simulation</i>	26
<i>CSS Examples</i>	29

Color

Android(4294936389)

Conversions

Conversions Part 1

Format	Color
Hex	FF8745
RGB	255, 135, 69
RGB Percent	100%, 53%, 27%
CMY	0.0000, 0.4706, 0.7294
CMYK	0.00, 0.47, 0.73, 0.00
HSL	21°, 100%, 64%
HSV	21°, 73%, 100%
XYZ	50.9782, 39.0176, 10.4745
YIQ	163.3560, 92.7060, 4.9140

Conversions

Conversions Part 2

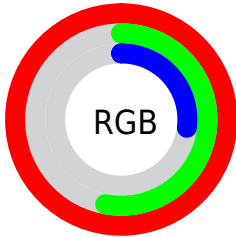
Format	Color
R_{YB}	255, 171, 69
Decimal	16746309
CIE _{Lab}	68.76, 40.88, 54.50
CIE _{LCh}	69, 68.131, 53.129
Yxy	39.0176, 0.5074, 0.3883
Android (android.graphics.Color)	4294936389 (0xFFFF8745)
YUV	163.3560, -46.5175, 80.3718
Hunter-Lab	62.4641, 36.3652, 33.7826

Details

The Android color **4294936389** is a light color, and the websafe version is hex **FF9966**. The color can be described as light washed orange. A complement of this color would be **4282760703**, and the grayscale version is **4288980132**.

A 20% lighter version of the original color is **4294950520**, and **4290794256** is the 20% darker color. If you saturate the color by 10%, you get **4294932267**, and if you desaturate by 10%, it is **4294940510**.

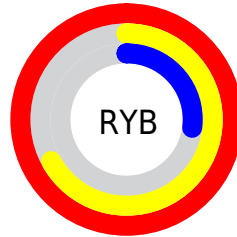
Distribution



Red (100%)

Green (53%)

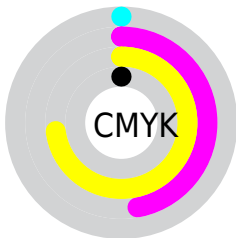
Blue (27%)



Red (100%)

Yellow (67%)

Blue (27%)

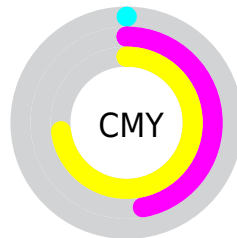


Cyan (0%)

Magenta (47%)

Yellow (73%)

Black (0%)



Cyan (0%)

Magenta (47%)

Yellow (73%)

Brightness & Saturation Gradients

These gradients show how the Android color 4294936389 changes by changing the brightness by 10 percent. The first figure shows a shift by +10% for each color and the second figure -10%.

Similar to the brightness gradients but the following saturation gradients show a change of the Android color 4294936389 by changing the saturation by 10% instead.



4294936389



4294936389

4294967295



4292832556



4294950520



4290794256



4294957715



4288755968



4294965166



4286783232



4294967242



4284809216



4294967271



4282908672



4281270274



4278190080



4294936389



4294936389

4294932267

4294940510

4294927890

4294944888

4294924800

4294949010

4294953387

4294957508

4294961886

4294966007

4294967295

Harmonies

Analogous

The Analogous color harmony consists of three colors that are next to each other on the color wheel.



4294930811



4294936389



4292059165

Triad

The Triadic color harmony groups three colors that are evenly spaced from another and form a triangle on the color wheel.



4294936389



4278240407



4287471103

Complementary

The Complementary color scheme is a pair of colors which are on the opposite of each other on the color wheel.



4294936389



4282760703

Split Complementary

Split-complementary colors differ from the complementary color scheme. The scheme consists of three colors, the original color and two neighbors of the complement color.



4278236159



4294936389



4278240726

Square

The Square scheme is like the rectangle color scheme, but the four colors are evenly spaced on the color wheel.



4294936389



4282826329



4278239487



4293231347

Rectangle

The Rectangle color scheme consists of four colors that form a rectangle on the color wheel.



4294936389



4289637660



4278239487



4284327679

Sweetspot

The Sweet Spot groups the original color and five complimentary colors.



4294936389



4294958023



4294919614



4286605918



4278190080



4286611584

Same Dimension

The Same Dimension uses a secret algorithm to generate beautiful new colors.



4294936389



4294929951



4294959941



4286609267



4290724864



4282390272

Inverse Universe

The Inverse Universe completely reimagines the original color for something new.



4282760703



4280266751



4282737151



4285758336



4278221759



4278200640

Previews

White Background



This preview shows how the Android color 4294936389 looks on a white background.

Color Contrast Check

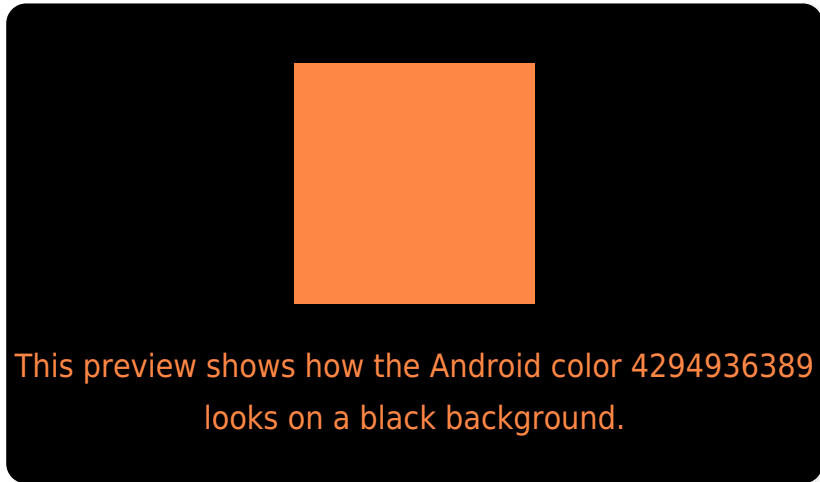
Large Text (above 18pt) WCAG AA × Fail

Any Text WCAG AA × Fail

Large Text (above 18pt) WCAG AAA × Fail

Any Text WCAG AAA × Fail

Black Background



Color Contrast Check

Large Text (above 18pt) WCAG AA ✓ Pass

Any Text WCAG AA ✓ Pass

Large Text (above 18pt) WCAG AAA ✓ Pass

Any Text WCAG AAA ✓ Pass

If you want to check with other color combinations, try the [Color Contrast Checker](#).

Android 4294936389 Background



This preview shows how black text looks on a background with the Android color 4294936389.



This preview shows how white text looks on a background with the Android color 4294936389.

Color Blindness Simulation

Color vision deficiency is a very complex topic, and I could not describe the different causes any better than Wikipedia does, so if you want to learn more, you should check out their [article about color blindness](#).

Dichromacy



Original Color
4294936389

Protanopia
4290422863

Deuteranopia
4291993662

Trichromacy



Original Color

4294936389



Protanomaly

4292058187



Deuteranomaly

4293039937



Tritanomaly

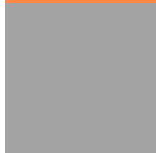
4294935665

Monochromacy



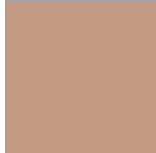
Original Color

4294936389



Achromatopsia

4288914339



Achromatomaly

4291074433

CSS Examples

Text

The CSS property to change the color of the text to Android 4294936389 is called "color". The color property can be set on classes, ids or directly on the HTML element.

This example shows how text in the color `rgb(255, 135, 69)` looks like.

```
.text, #text, p{  
    color:rgb(255, 135, 69)  
}
```

If you want to add a text shadow in that color use the text-shadow property, you can generate a text shadow directly with our [CSS Text Shadow Generator](#).

Here you see how black text with a 4 pixel rgb(255, 135, 69) colored shadow looks like.

```
.shadow{ text-shadow: 4px 4px 2px rgb(255, 135, 69) }
```

Border

The CSS property to change the border of an element to Android 4294936389 is called "border". The border property can be set on classes, ids or directly on the HTML element.

This example shows the color as border, it can be applied via the CSS property "border" or "border-color".

```
.border, #border, table{ border:4px solid rgb(255, 135, 69) }
```

If only the border color should be changed use the property `border-color`.

```
.border{ border-color:rgb(255, 135, 69) }
```

If you want to add a box shadow in that color use:

Here you see how a box with a 4 pixel `rgb(255, 135, 69)` colored shadow looks like.

```
.boxshadow{ -moz-box-shadow:4px 4px 4px  
4px rgb(255, 135, 69); -webkit-box-  
shadow:4px 4px 4px 4px rgb(255, 135, 69);  
box-shadow:4px 4px 4px 4px rgb(255, 135,  
69) }
```

Background

The CSS property to change the background color of an element to Android 4294936389 is called "background". The background property can be set on classes, ids or directly on the HTML element.

```
.background, #background, body{  
background: rgb(255, 135, 69) }
```

If only the background color should be changed can be used:

```
.background{ background-color: rgb(255,  
135, 69) }
```

This example shows the color as background, it is applied via the CSS property "background".

To optimize and compress your CSS code, you can use our [online CSS compressor and optimizer](#) based on csstidy. If you want to create a linear or radial gradient as background or border, check our [CSS Gradient Generator](#).

Hey! You found this booklet interesting? Support Converting Colors with the new Membership Option!

The pro membership hides all ads, plus gives you double the colors in the color bucket, and more awesome pro features!

[Learn more, Memberships starting at \\$2.50/m!](#)

**Follow me
on Twitter!**

@ConvertingColor