

Converting Colors

Android(4294939986)

Have a look what the booklet for
Android(4294939986) contains.

Android(4294939986)	3
<i>Conversions</i>	4
<i>Details</i>	6
<i>Harmonies</i>	11
<i>Previews</i>	23
<i>Color Blindness Simulation</i>	26
<i>CSS Examples</i>	29

Color

Android(4294939986)

Conversions

Conversions Part 1

Format	Color
Hex	FF9552
RGB	255, 149, 82
RGB Percent	100%, 58%, 32%
CMY	0.0000, 0.4157, 0.6784
CMYK	0.00, 0.42, 0.68, 0.00
HSL	23°, 100%, 66%
HSV	23°, 68%, 100%
XYZ	53.5104, 43.3641, 13.5324
YIQ	173.0560, 84.6830, 1.6350

Conversions

Conversions Part 2

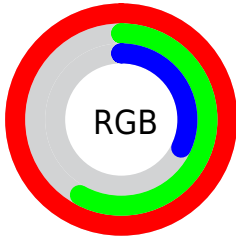
Format	Color
R_{YB}	255, 191, 82
Decimal	16749906
CIE _{Lab}	71.80, 34.41, 51.57
CIE _{LCh}	72, 61.996, 56.291
Yxy	43.3641, 0.4847, 0.3928
Android (android.graphics.Color)	4294939986 (0xFFFF9552)
YUV	173.0560, -44.8906, 71.8649
Hunter-Lab	65.8514, 29.8080, 33.9119

Details

The Android color **4294939986** is a light color, and the websafe version is hex **FF9966**. The color can be described as light muted orange. A complement of this color would be **4283612415**, and the grayscale version is **4289572269**.

A 20% lighter version of the original color is **4294954118**, and **4290863392** is the 20% darker color. If you saturate the color by 10%, you get **4294935865**, and if you desaturate by 10%, it is **4294944107**.

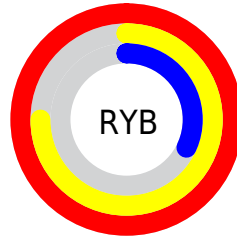
Distribution



Red (100%)

Green (58%)

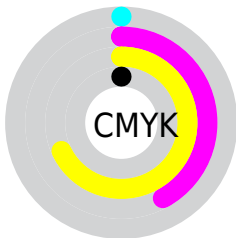
Blue (32%)



Red (100%)

Yellow (75%)

Blue (32%)

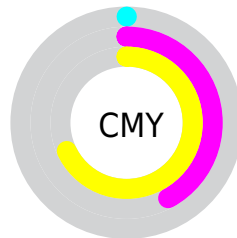


Cyan (0%)

Magenta (42%)

Yellow (68%)

Black (0%)



Cyan (0%)

Magenta (42%)

Yellow (68%)

Brightness & Saturation Gradients

These gradients show how the Android color 4294939986 changes by changing the brightness by 10 percent. The first figure shows a shift by +10% for each color and the second figure -10%.

Similar to the brightness gradients but the following saturation gradients show a change of the Android color 4294939986 by changing the saturation by 10% instead.



4294939986



4294939986

4294967295



4292901689



4294954118



4290863392



4294961313



4288890881



4294967228



4286918400



4294967256



4284945920



4294967285



4283039744



4281401345



4278190080



4294939986



4294939986

■ 4294935865

■ 4294944107

■ 4294931999

■ 4294947973

■ 4294927878

■ 4294952095

■ 4294927104

■ 4294955960

■ 4294960082

■ 4294964203

4294967295

Harmonies

Analogous

The Analogous color harmony consists of three colors that are next to each other on the color wheel.



4294935169



4294939986



4292193079

Triad

The Triadic color harmony groups three colors that are evenly spaced from another and form a triangle on the color wheel.



4294939986



4278242215



4289111295

Complementary

The Complementary color scheme is a pair of colors which are on the opposite of each other on the color wheel.



4294939986



4283612415

Split Complementary

Split-complementary colors differ from the complementary color scheme. The scheme consists of three colors, the original color and two neighbors of the complement color.



4278237439



4294939986



4278242272

Square

The Square scheme is like the rectangle color scheme, but the four colors are evenly spaced on the color wheel.



4294939986



4283614830



4278240767



4293823728

Rectangle

The Rectangle color scheme consists of four colors that form a rectangle on the color wheel.



4294939986



4289836859



4278240767



4286819327

Sweetspot

The Sweet Spot groups the original color and five complimentary colors.



4294939986



4294959308



4294922941



4286606689



4278190080



4286611584

Same Dimension

The Same Dimension uses a secret algorithm to generate beautiful new colors.



4294939986



4294934576



4294962002



4286609523



4290726400



4282390784

Inverse Universe

The Inverse Universe completely reimagines the original color for something new.



4283612415



4281380863



4283590399



4285758336



4278220223



4278200128

Previews

White Background



This preview shows how the Android color 4294939986 looks on a white background.

Color Contrast Check

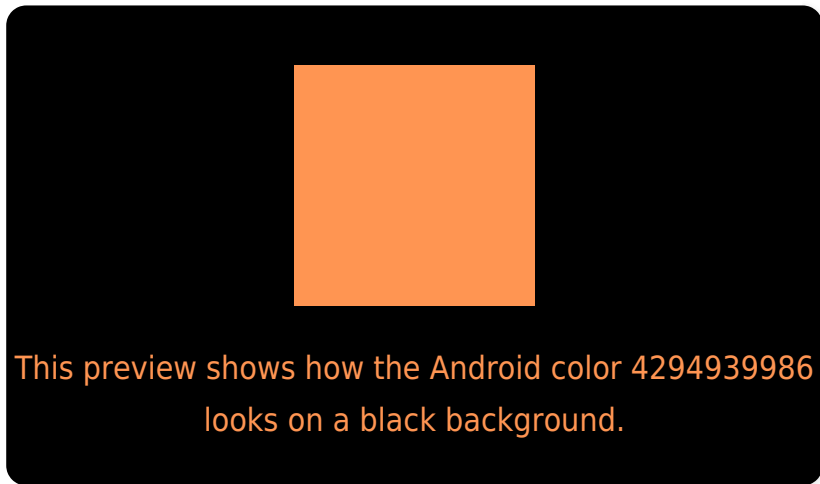
Large Text (above 18pt) WCAG AA × Fail

Any Text WCAG AA × Fail

Large Text (above 18pt) WCAG AAA × Fail

Any Text WCAG AAA × Fail

Black Background



Color Contrast Check

Large Text (above 18pt) WCAG AA ✓ Pass

Any Text WCAG AA ✓ Pass

Large Text (above 18pt) WCAG AAA ✓ Pass

Any Text WCAG AAA ✓ Pass

If you want to check with other color combinations, try the [Color Contrast Checker](#).

Android 4294939986 Background



This preview shows how black text looks on a background with the Android color 4294939986.



This preview shows how white text looks on a background with the Android color 4294939986.

Color Blindness Simulation

Color vision deficiency is a very complex topic, and I could not describe the different causes any better than Wikipedia does, so if you want to learn more, you should check out their [article about color blindness](#).


Dichromacy



Original Color
4294939986

Protanopia
4291015003

Deuteranopia
4292585549



Tritanopia
4294938521

Trichromacy



Original Color

4294939986



Protanomaly

4292454232



Deuteranomaly

4293435727



Tritanomaly

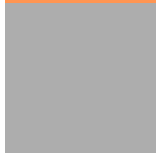
4294939007

Monochromacy



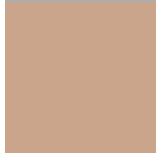
Original Color

4294939986



Achromatopsia

4289572269



Achromatomaly

4291536012

CSS Examples

Text

The CSS property to change the color of the text to Android 4294939986 is called "color". The color property can be set on classes, ids or directly on the HTML element.

This example shows how text in the color `rgb(255, 149, 82)` looks like.

```
.text, #text, p{  
    color:rgb(255, 149, 82)  
}
```

If you want to add a text shadow in that color use the text-shadow property, you can generate a text shadow directly with our [CSS Text Shadow Generator](#).

Here you see how black text with a 4 pixel rgb(255, 149, 82) colored shadow looks like.

```
.shadow{ text-shadow: 4px 4px 2px rgb(255, 149, 82) }
```

Border

The CSS property to change the border of an element to Android 4294939986 is called "border". The border property can be set on classes, ids or directly on the HTML element.

This example shows the color as border, it can be applied via the CSS property "border" or "border-color".

```
.border, #border, table{ border:4px solid rgb(255, 149, 82) }
```

If only the border color should be changed use the property border-color.

```
.border{ border-color:rgb(255, 149, 82) }
```

If you want to add a box shadow in that color use:

Here you see how a box with a 4 pixel rgb(255, 149, 82) colored shadow looks like.

```
.boxshadow{ -moz-box-shadow:4px 4px 4px  
4px rgb(255, 149, 82); -webkit-box-  
shadow:4px 4px 4px 4px rgb(255, 149, 82);  
box-shadow:4px 4px 4px 4px rgb(255, 149,  
82) }
```

Background

The CSS property to change the background color of an element to Android 4294939986 is called "background". The background property can be set on classes, ids or directly on the HTML element.

```
.background, #background, body{  
background: rgb(255, 149, 82) }
```

If only the background color should be changed can be used:

```
.background{ background-color: rgb(255,  
149, 82) }
```

This example shows the color as background, it is applied via the CSS property "background".

To optimize and compress your CSS code, you can use our [online CSS compressor and optimizer](#) based on csstidy. If you want to create a linear or radial gradient as background or border, check our [CSS Gradient Generator](#).

Hey! You found this booklet interesting? Support Converting Colors with the new Membership Option!

The pro membership hides all ads, plus gives you double the colors in the color bucket, and more awesome pro features!

[Learn more, Memberships starting at \\$2.50/m!](#)

**Follow me
on Twitter!**

@ConvertingColor