

# Converting Colors

Android(4294940500)

Have a look what the booklet for  
Android(4294940500) contains.

<b>Android(4294940500)</b> .....	3
<b><i>Conversions</i></b> .....	4
<b><i>Details</i></b> .....	6
<b><i>Harmonies</i></b> .....	11
<b><i>Previews</i></b> .....	23
<b><i>Color Blindness Simulation</i></b> .....	26
<b><i>CSS Examples</i></b> .....	29

# **Color**

**Android(4294940500)**

# Conversions

## Conversions Part 1

<b>Format</b>	<b>Color</b>
Hex	FF9754
RGB	255, 151, 84
RGB Percent	100%, 59%, 33%
CMY	0.0000, 0.4078, 0.6706
CMYK	0.00, 0.41, 0.67, 0.00
HSL	24°, 100%, 66%
HSV	24°, 67%, 100%
XYZ	53.9068, 44.0333, 14.0456
YIQ	174.4580, 83.4910, 1.2110

# Conversions

## Conversions Part 2

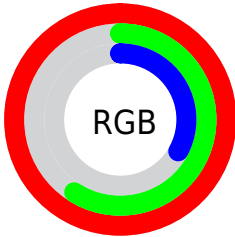
<b>Format</b>	<b>Color</b>
<b>R<sub>YB</sub></b>	255, 194, 84
Decimal	16750420
CIE <sub>Lab</sub>	72.25, 33.49, 51.10
CIE <sub>LCh</sub>	72, 61.096, 56.764
Yxy	44.0333, 0.4814, 0.3932
Android (android.graphics.Color)	4294940500 (0xFFFF9754)
YUV	174.4580, -44.5958, 70.6353
Hunter-Lab	66.3576, 28.8820, 33.9007

# Details

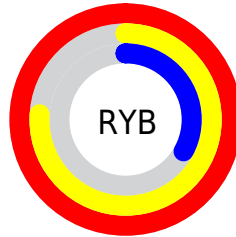
The Android color **4294940500** is a light color, and the websafe version is hex **FF9966**. The color can be described as light muted orange. A complement of this color would be **4283743487**, and the grayscale version is **4289703855**.

A 20% lighter version of the original color is **4294954632**, and **4290863906** is the 20% darker color. If you saturate the color by 10%, you get **4294936378**, and if you desaturate by 10%, it is **4294944621**.

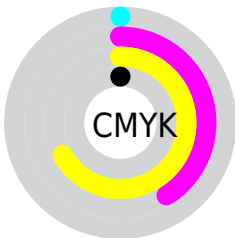
# Distribution



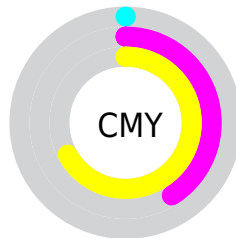
- Red (100%)
- Green (59%)
- Blue (33%)



- Red (100%)
- Yellow (76%)
- Blue (33%)



- Cyan (0%)
- Magenta (41%)
- Yellow (67%)
- Black (0%)



- Cyan (0%)
- Magenta (41%)
- Yellow (67%)

# Brightness & Saturation Gradients

These gradients show how the Android color 4294940500 changes by changing the brightness by 10 percent. The first figure shows a shift by +10% for each color and the second figure -10%.

Similar to the brightness gradients but the following saturation gradients show a change of the Android color 4294940500 by changing the saturation by 10% instead.





4294940500



4294940500

4294967295



4292902203



4294954632



4290863906



4294961827



4288891396



4294967230



4286919168



4294967259



4285012224



4294967287



4283105280



4281401344



4278190080



4294940500



4294940500

4294936378

4294944621

4294932513

4294948487

4294928392

4294952609

4294927360

4294956474

4294960595

4294964461

4294967295

# Harmonies

## Analogous

The Analogous color harmony consists of three colors that are next to each other on the color wheel.



4294935682



4294940500



4292193339

# Triad

The Triadic color harmony groups three colors that are evenly spaced from another and form a triangle on the color wheel.



4294940500



4278242473



4289308159

# Complementary

The Complementary color scheme is a pair of colors which are on the opposite of each other on the color wheel.



4294940500



4283743487

# Split Complementary

Split-complementary colors differ from the complementary color scheme. The scheme consists of three colors, the original color and two neighbors of the complement color.



4278237695



4294940500



4278242530

# Square

The Square scheme is like the rectangle color scheme, but the four colors are evenly spaced on the color wheel.



4294940500



4283746161



4278241023



4293955311

# Rectangle

The Rectangle color scheme consists of four colors that form a rectangle on the color wheel.



4294940500



4289902654



4278241023



4287081727

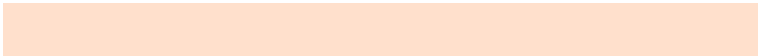


# Sweetspot

The Sweet Spot groups the original color and five complimentary colors.



4294940500



4294959308



4294923453



4286606689



4278190080



4286611584



# Same Dimension

The Same Dimension uses a secret algorithm to generate beautiful new colors.



4294940500



4294935347



4294962004



4286609523



4290726656



4282390784



# Inverse Universe

The Inverse Universe completely reimagines the original color for something new.



4283743487



4281577471



4283721983



4285758336



4278219967



4278200128



# Previews

## White Background



This preview shows how the Android color 4294940500 looks on a white background.

## Color Contrast Check

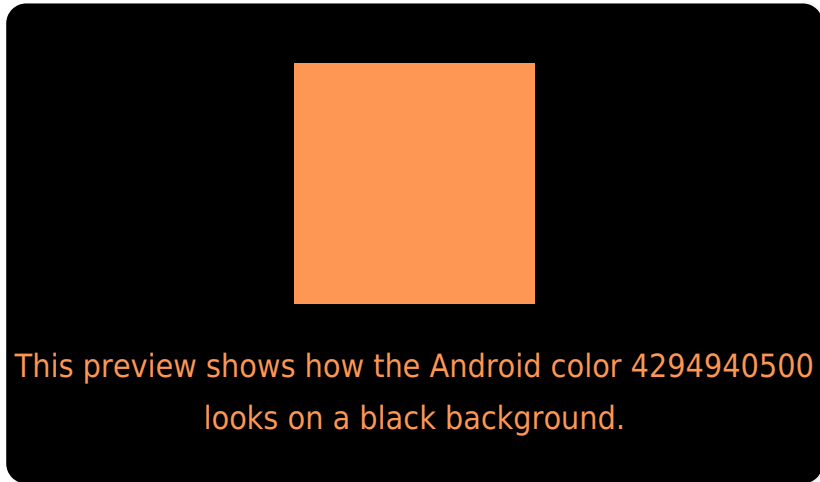
Large Text (above 18pt) WCAG AA × Fail

Any Text WCAG AA × Fail

Large Text (above 18pt) WCAG AAA × Fail

Any Text WCAG AAA × Fail

# Black Background



## Color Contrast Check

Large Text (above 18pt) WCAG AA ✓ Pass

Any Text WCAG AA ✓ Pass

Large Text (above 18pt) WCAG AAA ✓ Pass

Any Text WCAG AAA ✓ Pass

If you want to check with other color combinations, try the [Color Contrast Checker](#).



# Android 4294940500 Background



This preview shows how black text looks on a background with the Android color 4294940500.




This preview shows how white text looks on a background with the Android color 4294940500.

# Color Blindness Simulation

Color vision deficiency is a very complex topic, and I could not describe the different causes any better than Wikipedia does, so if you want to learn more, you should check out their [article about color blindness](#).

## Dichromacy





**Tritanopia**  
4294939035

# Trichromacy



**Original Color**

4294940500



**Protanomaly**

4292454490



**Deuteranomaly**

4293501521



**Tritanomaly**

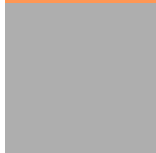
4294939521

# Monochromacy



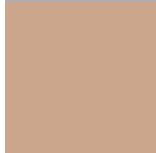
**Original Color**

4294940500



**Achromatopsia**

4289638062



**Achromatomaly**

4291536525

# CSS Examples

## Text

The CSS property to change the color of the text to Android 4294940500 is called "color". The color property can be set on classes, ids or directly on the HTML element.

This example shows how text in the color `rgb(255, 151, 84)` looks like.

```
.text, #text, p{  
    color:rgb(255, 151, 84)  
}
```

If you want to add a text shadow in that color use the text-shadow property, you can generate a text shadow directly with our [CSS Text Shadow Generator](#).

Here you see how black text with a 4 pixel rgb(255, 151, 84) colored shadow looks like.

```
.shadow{ text-shadow: 4px 4px 2px rgb(255, 151, 84) }
```

## Border

The CSS property to change the border of an element to Android 4294940500 is called "border". The border property can be set on classes, ids or directly on the HTML element.

This example shows the color as border, it can be applied via the CSS property "border" or "border-color".

```
.border, #border, table{ border:4px solid rgb(255, 151, 84) }
```

If only the border color should be changed use the property `border-color`.

```
.border{ border-color:rgb(255, 151, 84) }
```

If you want to add a box shadow in that color use:

Here you see how a box with a 4 pixel `rgb(255, 151, 84)` colored shadow looks like.

```
.boxshadow{ -moz-box-shadow:4px 4px 4px  
4px rgb(255, 151, 84); -webkit-box-  
shadow:4px 4px 4px 4px rgb(255, 151, 84);  
box-shadow:4px 4px 4px 4px rgb(255, 151,  
84) }
```

# Background

The CSS property to change the background color of an element to Android 4294940500 is called "background". The background property can be set on classes, ids or directly on the HTML element.

```
.background, #background, body{  
background: rgb(255, 151, 84) }
```

If only the background color should be changed can be used:

```
.background{ background-color: rgb(255,  
151, 84) }
```

This example shows the color as background, it is applied via the CSS property "background".

To optimize and compress your CSS code, you can use our [online CSS compressor and optimizer](#) based on csstidy. If you want to create a linear or radial gradient as background or border, check our [CSS Gradient Generator](#).



Hey! You found this booklet interesting? Support Converting Colors with the new Membership Option!

The pro membership hides all ads, plus gives you double the colors in the color bucket, and more awesome pro features!

**[Learn more, Memberships starting at \\$2.50/m!](#)**

**Follow me  
on Twitter!**

@ConvertingColor