

# Converting Colors

Android(4294947242)

Have a look what the booklet for  
Android(4294947242) contains.

<b>Android(4294947242)</b> .....	3
<b><i>Conversions</i></b> .....	4
<b><i>Details</i></b> .....	6
<b><i>Harmonies</i></b> .....	11
<b><i>Previews</i></b> .....	23
<b><i>Color Blindness Simulation</i></b> .....	26
<b><i>CSS Examples</i></b> .....	29

# **Color**

**Android(4294947242)**

# Conversions

## Conversions Part 1

Format	Color
Hex	FFB1AA
RGB	255, 177, 170
RGB Percent	100%, 69%, 67%
CMY	0.0000, 0.3059, 0.3333
CMYK	0.00, 0.31, 0.33, 0.00
HSL	5°, 100%, 83%
HSV	5°, 33%, 100%
XYZ	64.2178, 55.6066, 45.3787
YIQ	199.5240, 48.7350, 14.3590

# Conversions

## Conversions Part 2

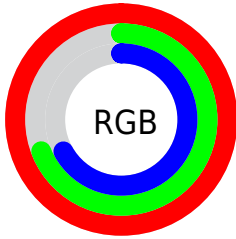
<b>Format</b>	<b>Color</b>
R <sub>Y</sub> B	255, 178, 170
Decimal	16757162
CIE Lab	79.39, 27.58, 15.07
CIE LCh	79, 31.431, 28.656
Yxy	55.6066, 0.3887, 0.3366
Android (android.graphics.Color)	4294947242 (0xFFFFB1AA)
YUV	199.5240, -14.5553, 48.6525
Hunter-Lab	74.5698, 23.2230, 16.1185

# Details

The Android color `4294947242` is a light color, and the websafe version is hex `FF9999`. A complement of this color would be `4289394943`, and the grayscale version is `4291348680`.

A 20% lighter version of the original color is `4294961633`, and `4291066998` is the 20% darker color. If you saturate the color by 10%, you get `4294941329`, and if you desaturate by 10%, it is `4294953155`.

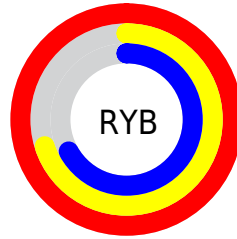
# Distribution



Red (100%)

Green (69%)

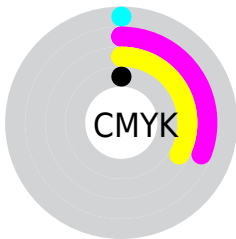
Blue (67%)



Red (100%)

Yellow (70%)

Blue (67%)

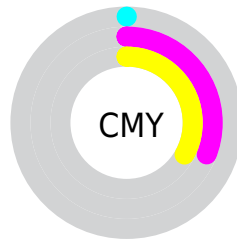


Cyan (0%)

Magenta (31%)

Yellow (33%)

Black (0%)



Cyan (0%)

Magenta (31%)

Yellow (33%)

# Brightness & Saturation Gradients

These gradients show how the Android color 4294947242 changes by changing the brightness by 10 percent. The first figure shows a shift by +10% for each color and the second figure -10%.

Similar to the brightness gradients but the following saturation gradients show a change of the Android color 4294947242 by changing the saturation by 10% instead.





4294947242



4294947242

4294967295



4292974224



4294961633



4291066998

4294967294



4289225309



4287384134



4285608495



4283833114



4282188288



4280680449



4278190080

 4294947242

 4294947242

 4294941329

 4294953155

 4294935159

 4294959325

 4294929246

 4294965239

 4294923076

4294967295

 4294917162

 4294911249

 4294907136

# Harmonies

## Analogous

The Analogous color harmony consists of three colors that are next to each other on the color wheel.



4294750151



4294947242



4294162580

# Triad

The Triadic color harmony groups three colors that are evenly spaced from another and form a triangle on the color wheel.



4294947242



4288336549



4288530687

# Complementary

The Complementary color scheme is a pair of colors which are on the opposite of each other on the color wheel.



4294947242



4289394943

# Split Complementary

Split-complementary colors differ from the complementary color scheme. The scheme consists of three colors, the original color and two neighbors of the complement color.



4286107894



4294947242



4286305730

# Square

The Square scheme is like the rectangle color scheme, but the four colors are evenly spaced on the color wheel.



4294947242



4290562961



4285191392



4291280632

# Rectangle

The Rectangle color scheme consists of four colors that form a rectangle on the color wheel.



4294947242



4293181324



4285191392



4287613949

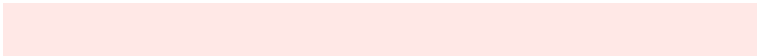


# Sweetspot

The Sweet Spot groups the original color and five complimentary colors.



4294947242



4294961382



4294945529



4286607728



4278190080



4286611584



# Same Dimension

The Same Dimension uses a secret algorithm to generate beautiful new colors.



4294947242



4294943129



4294957738



4286608499



4290711552



4282385664



# Inverse Universe

The Inverse Universe completely reimagines the original color for something new.



4289394943



4288280575



4289384447



4285759104



4278235327



4278205248



# Previews

## White Background



This preview shows how the Android color 4294947242 looks on a white background.

## Color Contrast Check

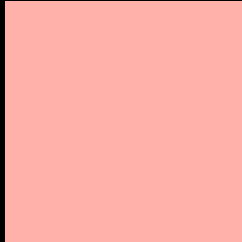
Large Text (above 18pt) WCAG AA × Fail

Any Text WCAG AA × Fail

Large Text (above 18pt) WCAG AAA × Fail

Any Text WCAG AAA × Fail

# Black Background



This preview shows how the Android color 4294947242 looks on a black background.

## Color Contrast Check

Large Text (above 18pt) WCAG AA ✓ Pass

Any Text WCAG AA ✓ Pass

Large Text (above 18pt) WCAG AAA ✓ Pass

Any Text WCAG AAA ✓ Pass

If you want to check with other color combinations, try the [Color Contrast Checker](#).



# Android 4294947242 Background



This preview shows how black text looks on a background with the Android color 4294947242.



This preview shows how white text looks on a background with the Android color 4294947242.

# Color Blindness Simulation

Color vision deficiency is a very complex topic, and I could not describe the different causes any better than Wikipedia does, so if you want to learn more, you should check out their [article about color blindness](#).


## Dichromacy



**Original Color**  
4294947242

**Protanopia**  
4291675316

**Deuteranopia**  
4293115560



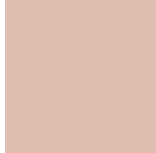
**Tritanopia**  
4294946748

# Trichromacy



**Original Color**

4294947242



**Protanomaly**

4292853168



**Deuteranomaly**

4293769641



**Tritanomaly**

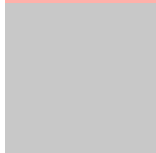
4294946997

# Monochromacy



**Original Color**

4294947242



**Achromatopsia**

4291348680



**Achromatomaly**

4292657341

# CSS Examples

## Text

The CSS property to change the color of the text to Android 4294947242 is called "color". The color property can be set on classes, ids or directly on the HTML element.

This example shows how text in the color `rgb(255, 177, 170)` looks like.

```
.text, #text, p{  
    color:rgb(255, 177, 170)  
}
```

If you want to add a text shadow in that color use the text-shadow property, you can generate a text shadow directly with our [CSS Text Shadow Generator](#).

Here you see how black text with a 4 pixel rgb(255, 177, 170) colored shadow looks like.

```
.shadow{ text-shadow: 4px 4px 2px rgb(255, 177, 170) }
```

## Border

The CSS property to change the border of an element to Android 4294947242 is called "border". The border property can be set on classes, ids or directly on the HTML element.

This example shows the color as border, it can be applied via the CSS property "border" or "border-color".

```
.border, #border, table{ border:4px solid rgb(255, 177, 170) }
```

If only the border color should be changed use the property `border-color`.

```
.border{ border-color:rgb(255, 177, 170) }
```

If you want to add a box shadow in that color use:

Here you see how a box with a 4 pixel `rgb(255, 177, 170)` colored shadow looks like.

```
.boxshadow{ -moz-box-shadow:4px 4px 4px  
4px rgb(255, 177, 170); -webkit-box-  
shadow:4px 4px 4px 4px rgb(255, 177, 170);  
box-shadow:4px 4px 4px 4px rgb(255, 177,  
170) }
```

# Background

The CSS property to change the background color of an element to Android 4294947242 is called "background". The background property can be set on classes, ids or directly on the HTML element.

```
.background, #background, body{  
background: rgb(255, 177, 170) }
```

If only the background color should be changed can be used:

```
.background{ background-color: rgb(255,  
177, 170) }
```

This example shows the color as background, it is applied via the CSS property "background".

To optimize and compress your CSS code, you can use our [online CSS compressor and optimizer](#) based on csstidy. If you want to create a linear or radial gradient as background or border, check our [CSS Gradient Generator](#).



Hey! You found this booklet interesting? Support Converting Colors with the new Membership Option!

The pro membership hides all ads, plus gives you double the colors in the color bucket, and more awesome pro features!

**[Learn more, Memberships starting at \\$2.50/m!](#)**

**Follow me  
on Twitter!**

@ConvertingColor