

Converting Colors

Android(4294948000)

Have a look what the booklet for
Android(4294948000) contains.

Android(4294948000)	3
<i>Conversions</i>	4
<i>Details</i>	6
<i>Harmonies</i>	11
<i>Previews</i>	23
<i>Color Blindness Simulation</i>	26
<i>CSS Examples</i>	29

Color

Android(4294948000)

Conversions

Conversions Part 1

Format	Color
Hex	FFB4A0
RGB	255, 180, 160
RGB Percent	100%, 71%, 63%
CMY	0.0000, 0.2941, 0.3725
CMYK	0.00, 0.29, 0.37, 0.00
HSL	13°, 100%, 81%
HSV	13°, 37%, 100%
XYZ	63.9064, 56.4406, 40.7836
YIQ	200.1450, 51.1200, 9.6800

Conversions

Conversions Part 2

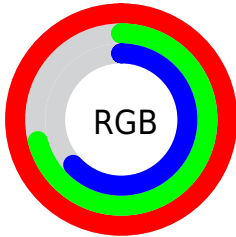
Format	Color
R _{YB}	255, 185, 160
Decimal	16757920
CIE Lab	79.86, 24.83, 21.11
CIE LCh	80, 32.589, 40.381
Yxy	56.4406, 0.3966, 0.3503
Android (android.graphics.Color)	4294948000 (0xFFFFB4A0)
YUV	200.1450, -19.7915, 48.1078
Hunter-Lab	75.1269, 20.3681, 20.4026

Details

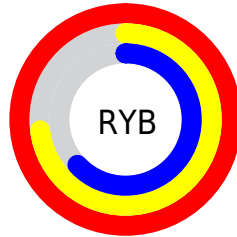
The Android color `4294948000` is a light color, and the websafe version is hex `FF9999`. A complement of this color would be `4288736255`, and the grayscale version is `4291348680`.

A 20% lighter version of the original color is `4294962391`, and `4291067756` is the 20% darker color. If you saturate the color by 10%, you get `4294942854`, and if you desaturate by 10%, it is `4294953146`.

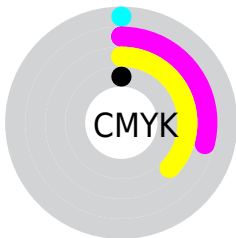
Distribution



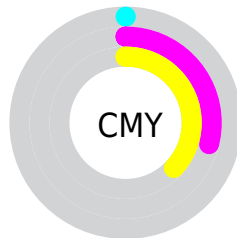
- Red (100%)
- Green (71%)
- Blue (63%)



- Red (100%)
- Yellow (73%)
- Blue (63%)



- Cyan (0%)
- Magenta (29%)
- Yellow (37%)
- Black (0%)



- Cyan (0%)
- Magenta (29%)
- Yellow (37%)

Brightness & Saturation Gradients

These gradients show how the Android color 4294948000 changes by changing the brightness by 10 percent. The first figure shows a shift by +10% for each color and the second figure -10%.

Similar to the brightness gradients but the following saturation gradients show a change of the Android color 4294948000 by changing the saturation by 10% instead.

 4294948000

 4294948000

4294967295

 4292974982

 4294962391

 4291067756

 4294967283

 4289226068

 4287384893

 4285543719

 4283833874

 4282124032

 4280680449

 4278190080

 4294948000

 4294948000

 4294942854

 4294953146

 4294937709

 4294958291

 4294932564

 4294963437

 4294927162

4294967295

 4294922017

 4294916871

 4294915584

Harmonies

Analogous

The Analogous color harmony consists of three colors that are next to each other on the color wheel.



4294946748



4294948000



4293770637

Triad

The Triadic color harmony groups three colors that are evenly spaced from another and form a triangle on the color wheel.



4294948000



4287419825



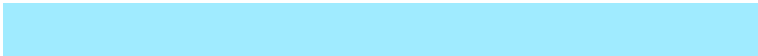
4289644031

Complementary

The Complementary color scheme is a pair of colors which are on the opposite of each other on the color wheel.



4294948000



4288736255

Split Complementary

Split-complementary colors differ from the complementary color scheme. The scheme consists of three colors, the original color and two neighbors of the complement color.



4286828542



4294948000



4285454288

Square

The Square scheme is like the rectangle color scheme, but the four colors are evenly spaced on the color wheel.



4294948000



4289712279



4284995052



4292393716

Rectangle

The Rectangle color scheme consists of four colors that form a rectangle on the color wheel.



4294948000



4292592777



4284995052



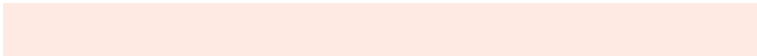
4288662015

Sweetspot

The Sweet Spot groups the original color and five complimentary colors.



4294948000



4294961635



4294942956



4286607983



4278190080



4286611584

Same Dimension

The Same Dimension uses a secret algorithm to generate beautiful new colors.



4294948000



4294943884



4294960032



4286608755



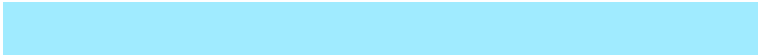
4290717696



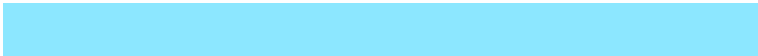
4282387712

Inverse Universe

The Inverse Universe completely reimagines the original color for something new.



4288736255



4287424511



4288724223



4285758848



4278228927



4278202944

Previews

White Background



This preview shows how the Android color 4294948000 looks on a white background.

Color Contrast Check

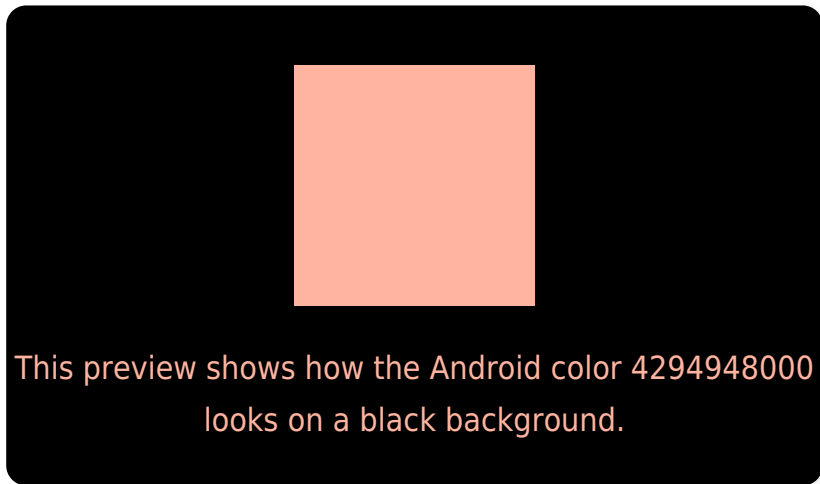
Large Text (above 18pt) WCAG AA × Fail

Any Text WCAG AA × Fail

Large Text (above 18pt) WCAG AAA × Fail

Any Text WCAG AAA × Fail

Black Background



Color Contrast Check

Large Text (above 18pt) WCAG AA ✓ Pass

Any Text WCAG AA ✓ Pass

Large Text (above 18pt) WCAG AAA ✓ Pass

Any Text WCAG AAA ✓ Pass

If you want to check with other color combinations, try the [Color Contrast Checker](#).

Android 4294948000 Background



This preview shows how black text looks on a background with the Android color 4294948000.



This preview shows how white text looks on a background with the Android color 4294948000.

Color Blindness Simulation

Color vision deficiency is a very complex topic, and I could not describe the different causes any better than Wikipedia does, so if you want to learn more, you should check out their [article about color blindness](#).


Dichromacy



Original Color
4294948000

Protanopia
4291937961

Deuteranopia
4293377694



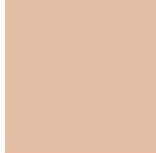
Tritanopia
4294947262

Trichromacy



Original Color

4294948000



Protanomaly

4293050278



Deuteranomaly

4293966495



Tritanomaly

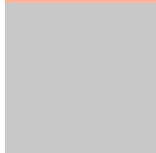
4294947507

Monochromacy



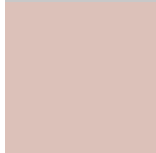
Original Color

4294948000



Achromatopsia

4291348680



Achromatomaly

4292657593

CSS Examples

Text

The CSS property to change the color of the text to Android 4294948000 is called "color". The color property can be set on classes, ids or directly on the HTML element.

This example shows how text in the color `rgb(255, 180, 160)` looks like.

```
.text, #text, p{  
    color:rgb(255, 180, 160)  
}
```

If you want to add a text shadow in that color use the text-shadow property, you can generate a text shadow directly with our [CSS Text Shadow Generator](#).

Here you see how black text with a 4 pixel rgb(255, 180, 160) colored shadow looks like.

```
.shadow{ text-shadow: 4px 4px 2px rgb(255, 180, 160) }
```

Border

The CSS property to change the border of an element to Android 4294948000 is called "border". The border property can be set on classes, ids or directly on the HTML element.

This example shows the color as border, it can be applied via the CSS property "border" or "border-color".

```
.border, #border, table{ border:4px solid rgb(255, 180, 160) }
```

If only the border color should be changed use the property border-color.

```
.border{ border-color:rgb(255, 180, 160) }
```

If you want to add a box shadow in that color use:

Here you see how a box with a 4 pixel rgb(255, 180, 160) colored shadow looks like.

```
.boxshadow{ -moz-box-shadow:4px 4px 4px  
4px rgb(255, 180, 160); -webkit-box-  
shadow:4px 4px 4px 4px rgb(255, 180, 160);  
box-shadow:4px 4px 4px 4px rgb(255, 180,  
160) }
```

Background

The CSS property to change the background color of an element to Android 4294948000 is called "background". The background property can be set on classes, ids or directly on the HTML element.

```
.background, #background, body{  
background: rgb(255, 180, 160) }
```

If only the background color should be changed can be used:

```
.background{ background-color: rgb(255,  
180, 160) }
```

This example shows the color as background, it is applied via the CSS property "background".

To optimize and compress your CSS code, you can use our [online CSS compressor and optimizer](#) based on csstidy. If you want to create a linear or radial gradient as background or border, check our [CSS Gradient Generator](#).

Hey! You found this booklet interesting? Support Converting Colors with the new Membership Option!

The pro membership hides all ads, plus gives you double the colors in the color bucket, and more awesome pro features!

[Learn more, Memberships starting at \\$2.50/m!](#)

**Follow me
on Twitter!**

@ConvertingColor