

Converting Colors

Android(4294948019)

Have a look what the booklet for
Android(4294948019) contains.

Android(4294948019)	3
<i>Conversions</i>	4
<i>Details</i>	6
<i>Harmonies</i>	11
<i>Previews</i>	23
<i>Color Blindness Simulation</i>	26
<i>CSS Examples</i>	29

Color

Android(4294948019)

Conversions

Conversions Part 1

Format	Color
Hex	FFB4B3
RGB	255, 180, 179
RGB Percent	100%, 71%, 70%
CMY	0.0000, 0.2941, 0.2980
CMYK	0.00, 0.29, 0.30, 0.00
HSL	1°, 100%, 85%
HSV	1°, 30%, 100%
XYZ	65.6979, 57.1572, 50.2176
YIQ	202.3110, 45.0210, 15.5890

Conversions

Conversions Part 2

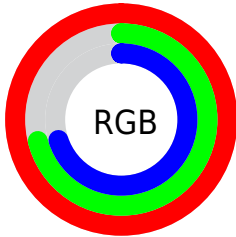
Format	Color
R _Y B	255, 180, 179
Decimal	16757939
CIE Lab	80.27, 27.14, 11.46
CIE LCh	80, 29.458, 22.885
Yxy	57.1572, 0.3796, 0.3302
Android (android.graphics.Color)	4294948019 (0xFFFFB4B3)
YUV	202.3110, -11.4923, 46.2083
Hunter-Lab	75.6024, 22.8111, 13.5393

Details

The Android color `4294948019` is a light color, and the websafe version is hex `FFCCCC`. A complement of this color would be `4289986303`, and the grayscale version is `4291480266`.

A 20% lighter version of the original color is `4294962411`, and `4291133310` is the 20% darker color. If you saturate the color by 10%, you get `4294941593`, and if you desaturate by 10%, it is `4294954444`.

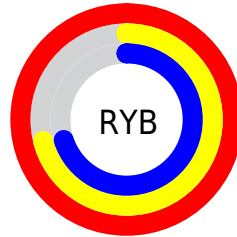
Distribution



Red (100%)

Green (71%)

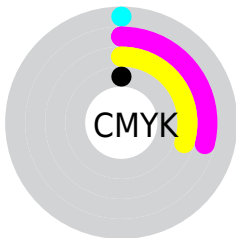
Blue (70%)



Red (100%)

Yellow (71%)

Blue (70%)

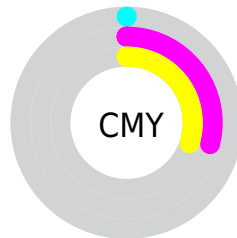


Cyan (0%)

Magenta (29%)

Yellow (30%)

Black (0%)



Cyan (0%)

Magenta (29%)

Yellow (30%)

Brightness & Saturation Gradients

These gradients show how the Android color 4294948019 changes by changing the brightness by 10 percent. The first figure shows a shift by +10% for each color and the second figure -10%.

Similar to the brightness gradients but the following saturation gradients show a change of the Android color 4294948019 by changing the saturation by 10% instead.

 4294948019

 4294948019

4294967295

 4293040536

 4294962411

 4291133310

 4289226085

 4287450189

 4285674807

 4283899169

 4282254603

 4280877057

 4278190080

 4294948019

 4294948019

 4294941593

 4294954444

 4294935168

 4294960870

 4294928742

4294967295

 4294922061

 4294915635

 4294909210

 4294902784

 4294902528

Harmonies

Analogous

The Analogous color harmony consists of three colors that are next to each other on the color wheel.



4294554831



4294948019



4294359708

Triad

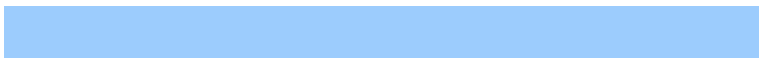
The Triadic color harmony groups three colors that are evenly spaced from another and form a triangle on the color wheel.



4294948019



4289057701



4288466173

Complementary

The Complementary color scheme is a pair of colors which are on the opposite of each other on the color wheel.



4294948019



4289986303

Split Complementary

Split-complementary colors differ from the complementary color scheme. The scheme consists of three colors, the original color and two neighbors of the complement color.



4286436338



4294948019



4287157951

Square

The Square scheme is like the rectangle color scheme, but the four colors are evenly spaced on the color wheel.



4294948019



4291153044



4285912795



4291019514

Rectangle

The Rectangle color scheme consists of four colors that form a rectangle on the color wheel.



4294948019



4293509267



4285912795



4287680251

Sweetspot

The Sweet Spot groups the original color and five complimentary colors.



4294948019



4294961384



4294947839



4286607985



4278190080



4286611584

Same Dimension

The Same Dimension uses a secret algorithm to generate beautiful new colors.



4294948019



4294943907



4294957491



4286608243



4290708224



4282384640

Inverse Universe

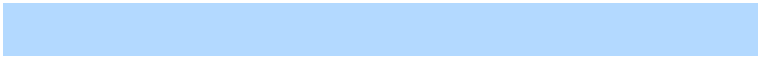
The Inverse Universe completely reimagines the original color for something new.



4289986303



4288937727



4289976831



4285759360



4278238655



4278206272

Previews

White Background



This preview shows how the Android color 4294948019 looks on a white background.

Color Contrast Check

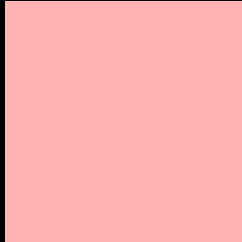
Large Text (above 18pt) WCAG AA × Fail

Any Text WCAG AA × Fail

Large Text (above 18pt) WCAG AAA × Fail

Any Text WCAG AAA × Fail

Black Background



This preview shows how the Android color 4294948019 looks on a black background.

Color Contrast Check

Large Text (above 18pt) WCAG AA ✓ Pass

Any Text WCAG AA ✓ Pass

Large Text (above 18pt) WCAG AAA ✓ Pass

Any Text WCAG AAA ✓ Pass

If you want to check with other color combinations, try the [Color Contrast Checker](#).

Android 4294948019 Background



This preview shows how black text looks on a background with the Android color 4294948019.



This preview shows how white text looks on a background with the Android color 4294948019.

Color Blindness Simulation

Color vision deficiency is a very complex topic, and I could not describe the different causes any better than Wikipedia does, so if you want to learn more, you should check out their [article about color blindness](#).

Dichromacy





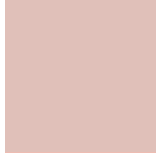
Tritanopia
4294947776

Trichromacy



Original Color

4294948019



Protanomaly

4292919481



Deuteranomaly

4293770418



Tritanomaly

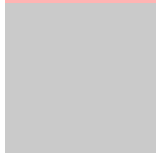
4294947771

Monochromacy



Original Color

4294948019



Achromatopsia

4291480266



Achromatomaly

4292723394

CSS Examples

Text

The CSS property to change the color of the text to Android 4294948019 is called "color". The color property can be set on classes, ids or directly on the HTML element.

This example shows how text in the color `rgb(255, 180, 179)` looks like.

```
.text, #text, p{  
    color:rgb(255, 180, 179)  
}
```

If you want to add a text shadow in that color use the text-shadow property, you can generate a text shadow directly with our [CSS Text Shadow Generator](#).

Here you see how black text with a 4 pixel rgb(255, 180, 179) colored shadow looks like.

```
.shadow{ text-shadow: 4px 4px 2px rgb(255, 180, 179) }
```

Border

The CSS property to change the border of an element to Android 4294948019 is called "border". The border property can be set on classes, ids or directly on the HTML element.

This example shows the color as border, it can be applied via the CSS property "border" or "border-color".

```
.border, #border, table{ border:4px solid rgb(255, 180, 179) }
```

If only the border color should be changed use the property `border-color`.

```
.border{ border-color:rgb(255, 180, 179) }
```

If you want to add a box shadow in that color use:

Here you see how a box with a 4 pixel `rgb(255, 180, 179)` colored shadow looks like.

```
.boxshadow{ -moz-box-shadow:4px 4px 4px  
4px rgb(255, 180, 179); -webkit-box-  
shadow:4px 4px 4px 4px rgb(255, 180, 179);  
box-shadow:4px 4px 4px 4px rgb(255, 180,  
179) }
```

Background

The CSS property to change the background color of an element to Android 4294948019 is called "background". The background property can be set on classes, ids or directly on the HTML element.

```
.background, #background, body{  
background: rgb(255, 180, 179) }
```

If only the background color should be changed can be used:

```
.background{ background-color: rgb(255,  
180, 179) }
```

This example shows the color as background, it is applied via the CSS property "background".

To optimize and compress your CSS code, you can use our [online CSS compressor and optimizer](#) based on csstidy. If you want to create a linear or radial gradient as background or border, check our [CSS Gradient Generator](#).

Hey! You found this booklet interesting? Support Converting Colors with the new Membership Option!

The pro membership hides all ads, plus gives you double the colors in the color bucket, and more awesome pro features!

[Learn more, Memberships starting at \\$2.50/m!](#)

**Follow me
on Twitter!**

@ConvertingColor