

# Converting Colors

Android(4294948270)

Have a look what the booklet for  
Android(4294948270) contains.

<b>Android(4294948270)</b> .....	3
<b><i>Conversions</i></b> .....	4
<b><i>Details</i></b> .....	6
<b><i>Harmonies</i></b> .....	11
<b><i>Previews</i></b> .....	23
<b><i>Color Blindness Simulation</i></b> .....	26
<b><i>CSS Examples</i></b> .....	29

# **Color**

**Android(4294948270)**

# Conversions

## Conversions Part 1

Format	Color
Hex	FFB5AE
RGB	255, 181, 174
RGB Percent	100%, 71%, 68%
CMY	0.0000, 0.2902, 0.3176
CMYK	0.00, 0.29, 0.32, 0.00
HSL	5°, 100%, 84%
HSV	5°, 32%, 100%
XYZ	65.4039, 57.3637, 47.6695
YIQ	202.3280, 46.3510, 13.5110

# Conversions

## Conversions Part 2

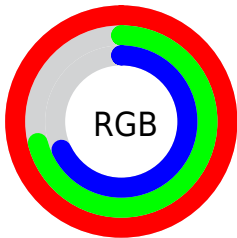
<b>Format</b>	<b>Color</b>
R <sub>YB</sub>	255, 182, 174
Decimal	16758190
CIE Lab	80.38, 25.98, 14.31
CIE LCh	80, 29.662, 28.854
Yxy	57.3637, 0.3837, 0.3366
Android (android.graphics.Color)	4294948270 (0xFFFFB5AE)
YUV	202.3280, -13.9657, 46.1933
Hunter-Lab	75.7389, 21.5997, 15.7005

# Details

The Android color `4294948270` is a light color, and the websafe version is hex `FFCCCC`. A complement of this color would be `4289657087`, and the grayscale version is `4291480266`.

A 20% lighter version of the original color is `4294962661`, and `4291133562` is the 20% darker color. If you saturate the color by 10%, you get `4294942356`, and if you desaturate by 10%, it is `4294954184`.

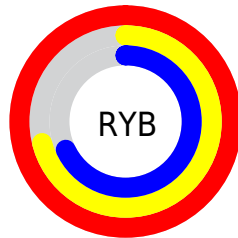
# Distribution



Red (100%)

Green (71%)

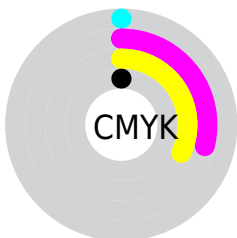
Blue (68%)



Red (100%)

Yellow (71%)

Blue (68%)

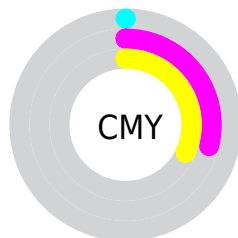


Cyan (0%)

Magenta (29%)

Yellow (32%)

Black (0%)



Cyan (0%)

Magenta (29%)

Yellow (32%)

# Brightness & Saturation Gradients

These gradients show how the Android color 4294948270 changes by changing the brightness by 10 percent. The first figure shows a shift by +10% for each color and the second figure -10%.

Similar to the brightness gradients but the following saturation gradients show a change of the Android color 4294948270 by changing the saturation by 10% instead.



 4294948270

 4294948270

4294967295

 4293040787

 4294962661

 4291133562

 4289226337

 4287450697

 4285609523

 4283899677

 4282255109

 4280811521

 4278190080

 4294948270

 4294948270

 4294942356

 4294954184

 4294936187

 4294960353

 4294930274

 4294966267

 4294924360

4294967295

 4294918447

 4294912277

 4294907392

# Harmonies

## Analogous

The Analogous color harmony consists of three colors that are next to each other on the color wheel.



4294751178



4294948270



4294163609

# Triad

The Triadic color harmony groups three colors that are evenly spaced from another and form a triangle on the color wheel.



4294948270



4288664746



4288924414

# Complementary

The Complementary color scheme is a pair of colors which are on the opposite of each other on the color wheel.



4294948270



4289657087

# Split Complementary

Split-complementary colors differ from the complementary color scheme. The scheme consists of three colors, the original color and two neighbors of the complement color.



4286698230



4294948270



4286764997

# Square

The Square scheme is like the rectangle color scheme, but the four colors are evenly spaced on the color wheel.



4294948270



4290760342



4285847265



4291478008

# Rectangle

The Rectangle color scheme consists of four colors that form a rectangle on the color wheel.



4294948270



4293247633



4285847265



4288138749

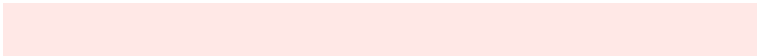


# Sweetspot

The Sweet Spot groups the original color and five complimentary colors.



4294948270



4294961382



4294946552



4286607984



4278190080



4286611584



# Same Dimension

The Same Dimension uses a secret algorithm to generate beautiful new colors.



4294948270



4294944414



4294958510



4286608499



4290711808



4282385920



# Inverse Universe

The Inverse Universe completely reimagines the original color for something new.



4289657087



4288608255



4289646847



4285759104



4278235071

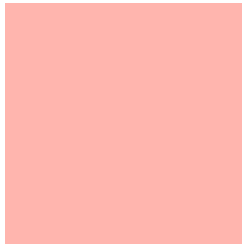


4278204992



# Previews

## White Background



This preview shows how the Android color 4294948270 looks on a white background.

## Color Contrast Check

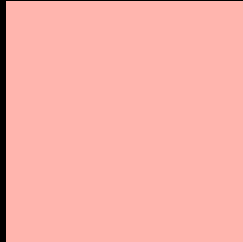
Large Text (above 18pt) WCAG AA × Fail

Any Text WCAG AA × Fail

Large Text (above 18pt) WCAG AAA × Fail

Any Text WCAG AAA × Fail

# Black Background



This preview shows how the Android color 4294948270 looks on a black background.

## Color Contrast Check

Large Text (above 18pt) WCAG AA ✓ Pass

Any Text WCAG AA ✓ Pass

Large Text (above 18pt) WCAG AAA ✓ Pass

Any Text WCAG AAA ✓ Pass

If you want to check with other color combinations, try the [Color Contrast Checker](#).



# Android 4294948270 Background



This preview shows how black text looks on a background with the Android color 4294948270.



This preview shows how white text looks on a background with the Android color 4294948270.

# Color Blindness Simulation

Color vision deficiency is a very complex topic, and I could not describe the different causes any better than Wikipedia does, so if you want to learn more, you should check out their [article about color blindness](#).

## Dichromacy



**Original Color**  
4294948270

**Protanopia**  
4291807159

**Deuteranopia**  
4293247148



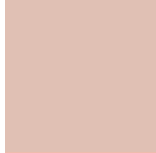
**Tritanopia**  
4294947776

# Trichromacy



**Original Color**

4294948270



**Protanomaly**

4292919476



**Deuteranomaly**

4293835949



**Tritanomaly**

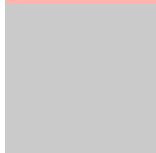
4294948025

# Monochromacy



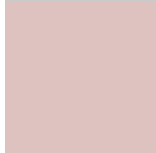
**Original Color**

4294948270



**Achromatopsia**

4291480266



**Achromatomaly**

4292723392

# CSS Examples

## Text

The CSS property to change the color of the text to Android 4294948270 is called "color". The color property can be set on classes, ids or directly on the HTML element.

This example shows how text in the color `rgb(255, 181, 174)` looks like.

```
.text, #text, p{  
    color:rgb(255, 181, 174)  
}
```

If you want to add a text shadow in that color use the text-shadow property, you can generate a text shadow directly with our [CSS Text Shadow Generator](#).

Here you see how black text with a 4 pixel rgb(255, 181, 174) colored shadow looks like.

```
.shadow{ text-shadow: 4px 4px 2px rgb(255, 181, 174) }
```

## Border

The CSS property to change the border of an element to Android 4294948270 is called "border". The border property can be set on classes, ids or directly on the HTML element.

This example shows the color as border, it can be applied via the CSS property "border" or "border-color".

```
.border, #border, table{ border:4px solid rgb(255, 181, 174) }
```

If only the border color should be changed use the property `border-color`.

```
.border{ border-color:rgb(255, 181, 174) }
```

If you want to add a box shadow in that color use:

Here you see how a box with a 4 pixel `rgb(255, 181, 174)` colored shadow looks like.

```
.boxshadow{ -moz-box-shadow:4px 4px 4px 4px rgb(255, 181, 174); -webkit-box-shadow:4px 4px 4px 4px rgb(255, 181, 174); box-shadow:4px 4px 4px 4px rgb(255, 181, 174) }
```

# Background

The CSS property to change the background color of an element to Android 4294948270 is called "background". The background property can be set on classes, ids or directly on the HTML element.

```
.background, #background, body{  
background: rgb(255, 181, 174) }
```

If only the background color should be changed can be used:

```
.background{ background-color: rgb(255,  
181, 174) }
```

This example shows the color as background, it is applied via the CSS property "background".

To optimize and compress your CSS code, you can use our [online CSS compressor and optimizer](#) based on csstidy. If you want to create a linear or radial gradient as background or border, check our [CSS Gradient Generator](#).



Hey! You found this booklet interesting? Support Converting Colors with the new Membership Option!

The pro membership hides all ads, plus gives you double the colors in the color bucket, and more awesome pro features!

**[Learn more, Memberships starting at \\$2.50/m!](#)**

**Follow me  
on Twitter!**

@ConvertingColor