

# Converting Colors

Android(4294948785)

Have a look what the booklet for  
Android(4294948785) contains.

<b>Android(4294948785)</b> .....	3
<b><i>Conversions</i></b> .....	4
<b><i>Details</i></b> .....	6
<b><i>Harmonies</i></b> .....	11
<b><i>Previews</i></b> .....	23
<b><i>Color Blindness Simulation</i></b> .....	26
<b><i>CSS Examples</i></b> .....	29

# **Color**

**Android(4294948785)**

# Conversions

## Conversions Part 1

Format	Color
Hex	FFB7B1
RGB	255, 183, 177
RGB Percent	100%, 72%, 69%
CMY	0.0000, 0.2824, 0.3059
CMYK	0.00, 0.28, 0.31, 0.00
HSL	5°, 100%, 85%
HSV	5°, 31%, 100%
XYZ	66.1093, 58.3013, 49.3639
YIQ	203.8440, 44.8380, 13.3980

# Conversions

## Conversions Part 2

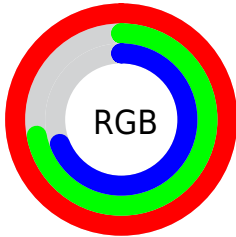
Format	Color
R <sub>Y</sub> B	255, 184, 177
Decimal	16758705
CIE Lab	80.91, 25.31, 13.44
CIE LCh	81, 28.655, 27.963
Yxy	58.3013, 0.3804, 0.3355
Android (android.graphics.Color)	4294948785 (0xFFFFB7B1)
YUV	203.8440, -13.2341, 44.8638
Hunter-Lab	76.3553, 20.9256, 15.1175

# Details

The Android color `4294948785` is a light color, and the websafe version is hex `FFCCCC`. A complement of this color would be `4289853951`, and the grayscale version is `4291611852`.

A 20% lighter version of the original color is `4294963177`, and `4291134076` is the 20% darker color. If you saturate the color by 10%, you get `4294942615`, and if you desaturate by 10%, it is `4294954955`.

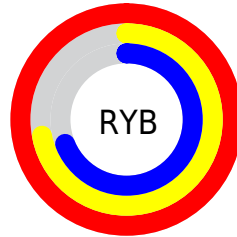
# Distribution



Red (100%)

Green (72%)

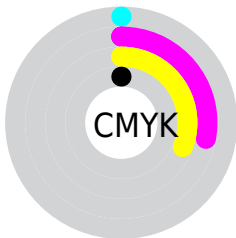
Blue (69%)



Red (100%)

Yellow (72%)

Blue (69%)

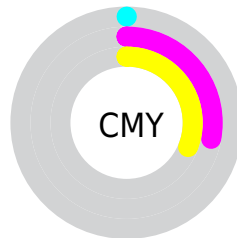


Cyan (0%)

Magenta (28%)

Yellow (31%)

Black (0%)



Cyan (0%)

Magenta (28%)

Yellow (31%)

# Brightness & Saturation Gradients

These gradients show how the Android color 4294948785 changes by changing the brightness by 10 percent. The first figure shows a shift by +10% for each color and the second figure -10%.

Similar to the brightness gradients but the following saturation gradients show a change of the Android color 4294948785 by changing the saturation by 10% instead.




 4294948785

 4294948785

4294967295

 4293041302

 4294963177

 4291134076

 4289226852

 4287450956

 4285675573

 4283900192

 4282255625

 4280811521

 4278190080

 4294948785

 4294948785

 4294942615

 4294954955

 4294936702

 4294960868

 4294930532

4294967038

 4294924619

4294967295

 4294918449

 4294912536

 4294906880

# Harmonies

## Analogous

The Analogous color harmony consists of three colors that are next to each other on the color wheel.



4294751948



4294948785



4294229660

# Triad

The Triadic color harmony groups three colors that are evenly spaced from another and form a triangle on the color wheel.



4294948785



4288927148



4289055998

# Complementary

The Complementary color scheme is a pair of colors which are on the opposite of each other on the color wheel.



4294948785



4289853951

# Split Complementary

Split-complementary colors differ from the complementary color scheme. The scheme consists of three colors, the original color and two neighbors of the complement color.



4286960629



4294948785



4287092934

# Square

The Square scheme is like the rectangle color scheme, but the four colors are evenly spaced on the color wheel.



4294948785



4290957209



4286240737



4291544056

# Rectangle

The Rectangle color scheme consists of four colors that form a rectangle on the color wheel.



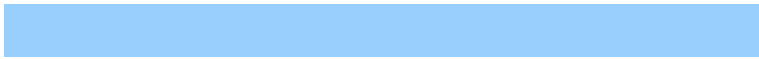
4294948785



4293378965



4286240737



4288270333

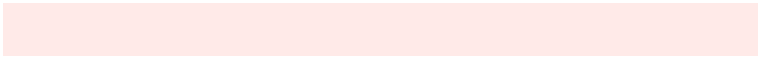


# Sweetspot

The Sweet Spot groups the original color and five complimentary colors.



4294948785



4294961896



4294947322



4286608241



4278190080



4286611584



# Same Dimension

The Same Dimension uses a secret algorithm to generate beautiful new colors.



4294948785



4294944929



4294958513



4286608499



4290711296



4282385664



# Inverse Universe

The Inverse Universe completely reimagines the original color for something new.



4289853951



4288805119



4289844223



4285759360



4278235583



4278205248



# Previews

## White Background



This preview shows how the Android color 4294948785 looks on a white background.

## Color Contrast Check

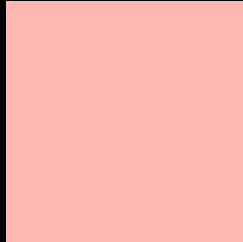
Large Text (above 18pt) WCAG AA × Fail

Any Text WCAG AA × Fail

Large Text (above 18pt) WCAG AAA × Fail

Any Text WCAG AAA × Fail

# Black Background



This preview shows how the Android color 4294948785 looks on a black background.

## Color Contrast Check

Large Text (above 18pt) WCAG AA ✓ Pass

Any Text WCAG AA ✓ Pass

Large Text (above 18pt) WCAG AAA ✓ Pass

Any Text WCAG AAA ✓ Pass

If you want to check with other color combinations, try the [Color Contrast Checker](#).



# Android 4294948785 Background



This preview shows how black text looks on a background with the Android color 4294948785.



This preview shows how white text looks on a background with the Android color 4294948785.

# Color Blindness Simulation

Color vision deficiency is a very complex topic, and I could not describe the different causes any better than Wikipedia does, so if you want to learn more, you should check out their [article about color blindness](#).


## Dichromacy



**Original Color**  
4294948785

**Protanopia**  
4291873210

**Deuteranopia**  
4293313199



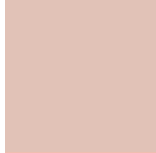
**Tritanopia**  
4294948290

# Trichromacy



**Original Color**

4294948785



**Protanomaly**

4292985527



**Deuteranomaly**

4293902000



**Tritanomaly**

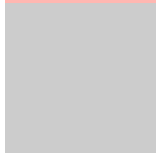
4294948540

# Monochromacy



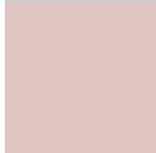
**Original Color**

4294948785



**Achromatopsia**

4291611852



**Achromatomaly**

4292854978

# CSS Examples

## Text

The CSS property to change the color of the text to Android 4294948785 is called "color". The color property can be set on classes, ids or directly on the HTML element.

This example shows how text in the color `rgb(255, 183, 177)` looks like.

```
.text, #text, p{  
    color:rgb(255, 183, 177)  
}
```

If you want to add a text shadow in that color use the text-shadow property, you can generate a text shadow directly with our [CSS Text Shadow Generator](#).

Here you see how black text with a 4 pixel rgb(255, 183, 177) colored shadow looks like.

```
.shadow{ text-shadow: 4px 4px 2px rgb(255, 183, 177) }
```

## Border

The CSS property to change the border of an element to Android 4294948785 is called "border". The border property can be set on classes, ids or directly on the HTML element.

This example shows the color as border, it can be applied via the CSS property "border" or "border-color".

```
.border, #border, table{ border:4px solid rgb(255, 183, 177) }
```

If only the border color should be changed use the property border-color.

```
.border{ border-color:rgb(255, 183, 177) }
```

If you want to add a box shadow in that color use:

Here you see how a box with a 4 pixel rgb(255, 183, 177) colored shadow looks like.

```
.boxshadow{ -moz-box-shadow:4px 4px 4px  
4px rgb(255, 183, 177); -webkit-box-  
shadow:4px 4px 4px 4px rgb(255, 183, 177);  
box-shadow:4px 4px 4px 4px rgb(255, 183,  
177) }
```

# Background

The CSS property to change the background color of an element to Android 4294948785 is called "background". The background property can be set on classes, ids or directly on the HTML element.

```
.background, #background, body{  
background: rgb(255, 183, 177) }
```

If only the background color should be changed can be used:

```
.background{ background-color: rgb(255,  
183, 177) }
```

This example shows the color as background, it is applied via the CSS property "background".

To optimize and compress your CSS code, you can use our [online CSS compressor and optimizer](#) based on csstidy. If you want to create a linear or radial gradient as background or border, check our [CSS Gradient Generator](#).



Hey! You found this booklet interesting? Support Converting Colors with the new Membership Option!

The pro membership hides all ads, plus gives you double the colors in the color bucket, and more awesome pro features!

**[Learn more, Memberships starting at \\$2.50/m!](#)**

**Follow me  
on Twitter!**

@ConvertingColor