

Converting Colors

Android(4294949082)

Have a look what the booklet for
Android(4294949082) contains.

Android(4294949082)	3
<i>Conversions</i>	4
<i>Details</i>	6
<i>Harmonies</i>	11
<i>Previews</i>	23
<i>Color Blindness Simulation</i>	26
<i>CSS Examples</i>	29

Color

Android(4294949082)

Conversions

Conversions Part 1

Format	Color
Hex	FFB8DA
RGB	255, 184, 218
RGB Percent	100%, 72%, 85%
CMY	0.0000, 0.2784, 0.1451
CMYK	0.00, 0.28, 0.15, 0.00
HSL	331°, 100%, 86%
HSV	331°, 28%, 100%
XYZ	71.0354, 60.6029, 74.2832
YIQ	209.1050, 31.4020, 25.6260

Conversions

Conversions Part 2

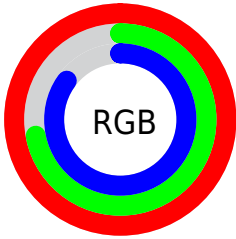
Format	Color
R _Y B	255, 184, 218
Decimal	16759002
CIE Lab	82.16, 30.62, -6.82
CIE LCh	82, 31.374, 347.453
Yxy	60.6029, 0.3450, 0.2943
Android (android.graphics.Color)	4294949082 (0xFFFFB8DA)
YUV	209.1050, 4.3852, 40.2499
Hunter-Lab	77.8479, 26.6456, -2.0816

Details

The Android color `4294949082` is a light color, and the websafe version is hex `FFCCFF`. A complement of this color would be `4290314205`, and the grayscale version is `4291940817`.

A 20% lighter version of the original color is `4294963711`, and `4291134115` is the 20% darker color. If you saturate the color by 10%, you get `4294942669`, and if you desaturate by 10%, it is `4294955751`.

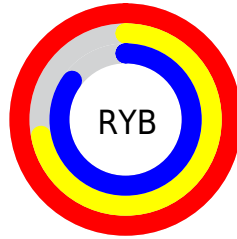
Distribution



Red (100%)

Green (72%)

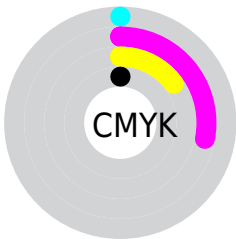
Blue (85%)



Red (100%)

Yellow (72%)

Blue (85%)

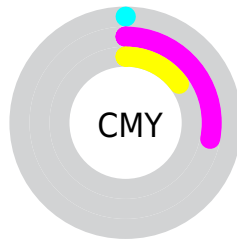


Cyan (0%)

Magenta (28%)

Yellow (15%)

Black (0%)



Cyan (0%)

Magenta (28%)

Yellow (15%)

Brightness & Saturation Gradients

These gradients show how the Android color 4294949082 changes by changing the brightness by 10 percent. The first figure shows a shift by +10% for each color and the second figure -10%.

Similar to the brightness gradients but the following saturation gradients show a change of the Android color 4294949082 by changing the saturation by 10% instead.

 4294949082

 4294949082

4294967295

 4293041598

 4294963711

 4291134115


 4289292681

 4287516783

 4285806423

 4284096576

 4282451498

 4281008150

 4278190080

■ 4294949082

■ 4294949082

■ 4294942669

■ 4294955751

■ 4294935999

■ 4294962165

■ 4294929330

4294967295

■ 4294922917

■ 4294916504

■ 4294909834

■ 4294903421

■ 4294901882

Harmonies

Analogous

The Analogous color harmony consists of three colors that are next to each other on the color wheel.



4293312500



4294949082



4294948796

Triad

The Triadic color harmony groups three colors that are evenly spaced from another and form a triangle on the color wheel.



4294949082



4291874964



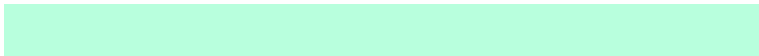
4286044919

Complementary

The Complementary color scheme is a pair of colors which are on the opposite of each other on the color wheel.



4294949082



4290314205

Split Complementary

Split-complementary colors differ from the complementary color scheme. The scheme consists of three colors, the original color and two neighbors of the complement color.



4285914589



4294949082



4289648804

Square

The Square scheme is like the rectangle color scheme, but the four colors are evenly spaced on the color wheel.



4294949082



4293772947



4287487167



4288074751

Rectangle

The Rectangle color scheme consists of four colors that form a rectangle on the color wheel.



4294949082



4294949546



4287487167



4285783023

Sweetspot

The Sweet Spot groups the original color and five complimentary colors.



4294949082



4294962164



4292720895



4286608249



4278190080



4286611584

Same Dimension

The Same Dimension uses a secret algorithm to generate beautiful new colors.



4294949082



4294945747



4294949304



4286608249



4290707548



4282384415

Inverse Universe

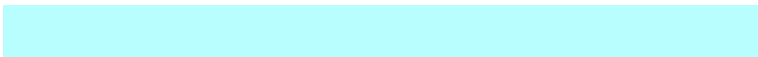
The Inverse Universe completely reimagines the original color for something new.



4294949082



4294945747



4290313983



4286608249



4290707548



4282384415

Previews

White Background



This preview shows how the Android color 4294949082 looks on a white background.

Color Contrast Check

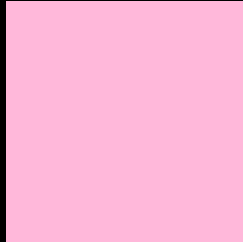
Large Text (above 18pt) WCAG AA × Fail

Any Text WCAG AA × Fail

Large Text (above 18pt) WCAG AAA × Fail

Any Text WCAG AAA × Fail

Black Background



This preview shows how the Android color 4294949082 looks on a black background.

Color Contrast Check

Large Text (above 18pt) WCAG AA ✓ Pass

Any Text WCAG AA ✓ Pass

Large Text (above 18pt) WCAG AAA ✓ Pass

Any Text WCAG AAA ✓ Pass

If you want to check with other color combinations, try the [Color Contrast Checker](#).

Android 4294949082 Background



This preview shows how black text looks on a background with the Android color 4294949082.



This preview shows how white text looks on a background with the Android color 4294949082.

Color Blindness Simulation

Color vision deficiency is a very complex topic, and I could not describe the different causes any better than Wikipedia does, so if you want to learn more, you should check out their [article about color blindness](#).

Dichromacy



Original Color
4294949082

Protanopia
4291415014

Deuteranopia
4292659159



Tritanopia
4294818761

Trichromacy



Original Color

4294949082



Protanomaly

4292723938



Deuteranomaly

4293509848



Tritanomaly

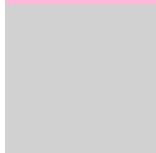
4294884047

Monochromacy



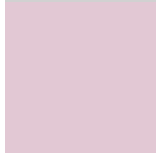
Original Color

4294949082



Achromatopsia

4291940817



Achromatomaly

4293052628

CSS Examples

Text

The CSS property to change the color of the text to Android 4294949082 is called "color". The color property can be set on classes, ids or directly on the HTML element.

This example shows how text in the color `rgb(255, 184, 218)` looks like.

```
.text, #text, p{  
    color:rgb(255, 184, 218)  
}
```

If you want to add a text shadow in that color use the text-shadow property, you can generate a text shadow directly with our [CSS Text Shadow Generator](#).

Here you see how black text with a 4 pixel rgb(255, 184, 218) colored shadow looks like.

```
.shadow{ text-shadow: 4px 4px 2px rgb(255, 184, 218) }
```

Border

The CSS property to change the border of an element to Android 4294949082 is called "border". The border property can be set on classes, ids or directly on the HTML element.

This example shows the color as border, it can be applied via the CSS property "border" or "border-color".

```
.border, #border, table{ border:4px solid rgb(255, 184, 218) }
```

If only the border color should be changed use the property `border-color`.

```
.border{ border-color:rgb(255, 184, 218) }
```

If you want to add a box shadow in that color use:

Here you see how a box with a 4 pixel `rgb(255, 184, 218)` colored shadow looks like.

```
.boxshadow{ -moz-box-shadow:4px 4px 4px  
4px rgb(255, 184, 218); -webkit-box-  
shadow:4px 4px 4px 4px rgb(255, 184, 218);  
box-shadow:4px 4px 4px 4px rgb(255, 184,  
218) }
```

Background

The CSS property to change the background color of an element to Android 4294949082 is called "background". The background property can be set on classes, ids or directly on the HTML element.

```
.background, #background, body{  
background: rgb(255, 184, 218) }
```

If only the background color should be changed can be used:

```
.background{ background-color: rgb(255,  
184, 218) }
```

This example shows the color as background, it is applied via the CSS property "background".

To optimize and compress your CSS code, you can use our [online CSS compressor and optimizer](#) based on csstidy. If you want to create a linear or radial gradient as background or border, check our [CSS Gradient Generator](#).

Hey! You found this booklet interesting? Support Converting Colors with the new Membership Option!

The pro membership hides all ads, plus gives you double the colors in the color bucket, and more awesome pro features!

[Learn more, Memberships starting at \\$2.50/m!](#)

**Follow me
on Twitter!**

@ConvertingColor