

Converting Colors

Android(4294949301)

Have a look what the booklet for
Android(4294949301) contains.

Android(4294949301)	3
<i>Conversions</i>	4
<i>Details</i>	6
<i>Harmonies</i>	11
<i>Previews</i>	23
<i>Color Blindness Simulation</i>	26
<i>CSS Examples</i>	29

Color

Android(4294949301)

Conversions

Conversions Part 1

Format	Color
Hex	FFB9B5
RGB	255, 185, 181
RGB Percent	100%, 73%, 71%
CMY	0.0000, 0.2745, 0.2902
CMYK	0.00, 0.27, 0.29, 0.00
HSL	3°, 100%, 85%
HSV	3°, 29%, 100%
XYZ	66.9295, 59.2941, 51.6334
YIQ	205.4740, 43.0040, 13.5960

Conversions

Conversions Part 2

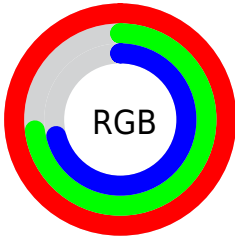
Format	Color
R_{YB}	255, 185, 181
Decimal	16759221
CIE _{Lab}	81.45, 24.78, 12.06
CIE _{LCh}	81, 27.555, 25.955
Yxy	59.2941, 0.3763, 0.3334
Android (android.graphics.Color)	4294949301 (0xFFFFB9B5)
YUV	205.4740, -12.0657, 43.4343
Hunter-Lab	77.0027, 20.3946, 14.1455

Details

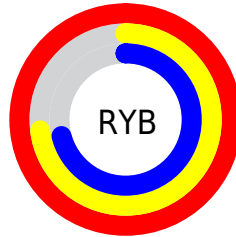
The Android color `4294949301` is a light color, and the websafe version is hex `FFCCCC`. A complement of this color would be `4290116607`, and the grayscale version is `4291743438`.

A 20% lighter version of the original color is `4294963693`, and `4291134336` is the 20% darker color. If you saturate the color by 10%, you get `4294943132`, and if you desaturate by 10%, it is `4294955471`.

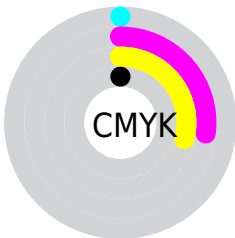
Distribution



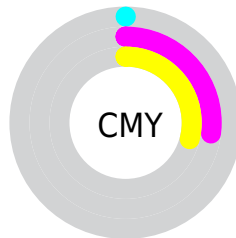
- Red (100%)
- Green (73%)
- Blue (71%)



- Red (100%)
- Yellow (73%)
- Blue (71%)



- Cyan (0%)
- Magenta (27%)
- Yellow (29%)
- Black (0%)



- Cyan (0%)
- Magenta (27%)
- Yellow (29%)

Brightness & Saturation Gradients

These gradients show how the Android color 4294949301 changes by changing the brightness by 10 percent. The first figure shows a shift by +10% for each color and the second figure -10%.

Similar to the brightness gradients but the following saturation gradients show a change of the Android color 4294949301 by changing the saturation by 10% instead.

 4294949301

 4294949301

4294967295

 4293041818

 4294963693

 4291134336

 4289292903

 4287451471

 4285675832

 4283965987

 4282321678

 4280877056

 4278190080

 4294949301

 4294949301

 4294943132

 4294955471

 4294936962

 4294961640

 4294930793

4294967295

 4294924623

 4294918198

 4294912028

 4294905859

 4294905344

Harmonies

Analogous

The Analogous color harmony consists of three colors that are next to each other on the color wheel.



4294686927



4294949301



4294295457

Triad

The Triadic color harmony groups three colors that are evenly spaced from another and form a triangle on the color wheel.



4294949301



4289255085



4289122045

Complementary

The Complementary color scheme is a pair of colors which are on the opposite of each other on the color wheel.



4294949301



4290116607

Split Complementary

Split-complementary colors differ from the complementary color scheme. The scheme consists of three colors, the original color and two neighbors of the complement color.



4287223284



4294949301



4287486406

Square

The Square scheme is like the rectangle color scheme, but the four colors are evenly spaced on the color wheel.



4294949301



4291219612



4286634208



4291479033

Rectangle

The Rectangle color scheme consists of four colors that form a rectangle on the color wheel.



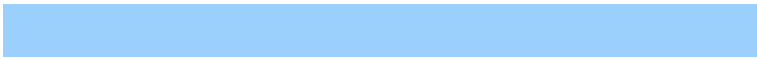
4294949301



4293510553



4286634208



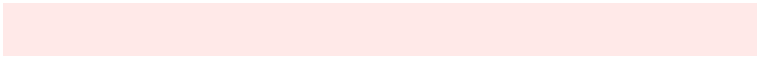
4288401660

Sweetspot

The Sweet Spot groups the original color and five complimentary colors.



4294949301



4294961640



4294948347



4286607985



4278190080



4286611584

Same Dimension

The Same Dimension uses a secret algorithm to generate beautiful new colors.



4294949301



4294945702



4294958773



4286608243



4290710016



4282385152

Inverse Universe

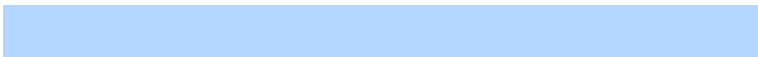
The Inverse Universe completely reimagines the original color for something new.



4290116607



4289133311



4290107135



4285759360



4278236607



4278205504

Previews

White Background



This preview shows how the Android color 4294949301 looks on a white background.

Color Contrast Check

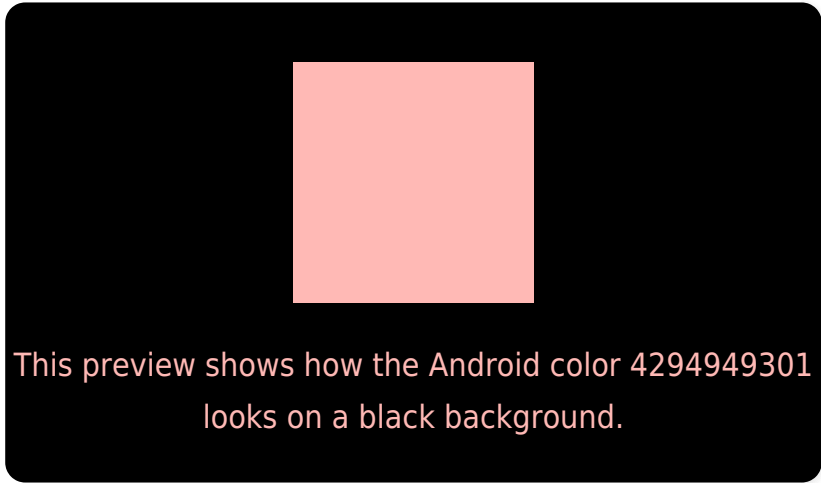
Large Text (above 18pt) WCAG AA × Fail

Any Text WCAG AA × Fail

Large Text (above 18pt) WCAG AAA × Fail

Any Text WCAG AAA × Fail

Black Background



Color Contrast Check

Large Text (above 18pt) WCAG AA ✓ Pass

Any Text WCAG AA ✓ Pass

Large Text (above 18pt) WCAG AAA ✓ Pass

Any Text WCAG AAA ✓ Pass

If you want to check with other color combinations, try the [Color Contrast Checker](#).

Android 4294949301 Background



This preview shows how black text looks on a background with the Android color 4294949301.



This preview shows how white text looks on a background with the Android color 4294949301.

Color Blindness Simulation

Color vision deficiency is a very complex topic, and I could not describe the different causes any better than Wikipedia does, so if you want to learn more, you should check out their [article about color blindness](#).


Dichromacy



Original Color
4294949301

Protanopia
4291939006

Deuteranopia
4293378995



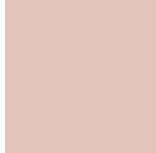
Tritanopia
4294948805

Trichromacy



Original Color

4294949301



Protanomaly

4293051579



Deuteranomaly

4293967796



Tritanomaly

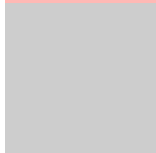
4294949055

Monochromacy



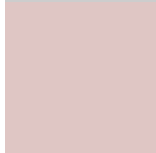
Original Color

4294949301



Achromatopsia

4291677645



Achromatomaly

4292855492

CSS Examples

Text

The CSS property to change the color of the text to Android 4294949301 is called "color". The color property can be set on classes, ids or directly on the HTML element.

This example shows how text in the color `rgb(255, 185, 181)` looks like.

```
.text, #text, p{  
    color:rgb(255, 185, 181)  
}
```

If you want to add a text shadow in that color use the text-shadow property, you can generate a text shadow directly with our [CSS Text Shadow Generator](#).

Here you see how black text with a 4 pixel rgb(255, 185, 181) colored shadow looks like.

```
.shadow{ text-shadow: 4px 4px 2px rgb(255, 185, 181) }
```

Border

The CSS property to change the border of an element to Android 4294949301 is called "border". The border property can be set on classes, ids or directly on the HTML element.

This example shows the color as border, it can be applied via the CSS property "border" or "border-color".

```
.border, #border, table{ border:4px solid rgb(255, 185, 181) }
```

If only the border color should be changed use the property `border-color`.

```
.border{ border-color:rgb(255, 185, 181) }
```

If you want to add a box shadow in that color use:

Here you see how a box with a 4 pixel `rgb(255, 185, 181)` colored shadow looks like.

```
.boxshadow{ -moz-box-shadow:4px 4px 4px  
4px rgb(255, 185, 181); -webkit-box-  
shadow:4px 4px 4px 4px rgb(255, 185, 181);  
box-shadow:4px 4px 4px 4px rgb(255, 185,  
181) }
```

Background

The CSS property to change the background color of an element to Android 4294949301 is called "background". The background property can be set on classes, ids or directly on the HTML element.

```
.background, #background, body{  
background: rgb(255, 185, 181) }
```

If only the background color should be changed can be used:

```
.background{ background-color: rgb(255,  
185, 181) }
```

This example shows the color as background, it is applied via the CSS property "background".

To optimize and compress your CSS code, you can use our [online CSS compressor and optimizer](#) based on csstidy. If you want to create a linear or radial gradient as background or border, check our [CSS Gradient Generator](#).

Hey! You found this booklet interesting? Support Converting Colors with the new Membership Option!

The pro membership hides all ads, plus gives you double the colors in the color bucket, and more awesome pro features!

[Learn more, Memberships starting at \\$2.50/m!](#)

**Follow me
on Twitter!**

@ConvertingColor